

4 BEDROOM/2 BATH HOME IN BOGUE CHITTO, MS on .8± Acres in Lincoln County, MS



\$139,000

1855 Hwy 51 SE Bogue Chitto, MS

Come take a look at this completely remodeled four bedroom, two bath home located in Bogue Chitto School District situated on .8+/- acre of land! This property is in Bogue Chitto, Lincoln County, MS. It is just minutes from the amenities of Brookhaven, MS. This property has had so many significant updates, including granite countertops, new water heater, new exterior AC condenser, new light fixtures throughout, new toilets, new flooring, new paint, new metal roof, and new electrical panel box, to name a few! It feels like a brand-new home! It also has a private bathroom in the primary bedroom. Call Trinity to view this Lincoln County home today!!

Directions from the intersection of US-84 and Highway 51 in Brookhaven, MS: Travel south on US-51, in 6.0 miles, the property will be on the left. Address: 1855 Highway 51 SE, Bogue Chitto, MS.



Call me today!

TRINITY WEBB, REALTOR®
Trinity@TomSmithHomes.com
601.990.5070 **office** | 769.218.7860 **cell**



TomSmithLandandHomes.com

Information is believed to be accurate but not guaranteed.



Call me today!

TRINITY WEBB, REALTOR®

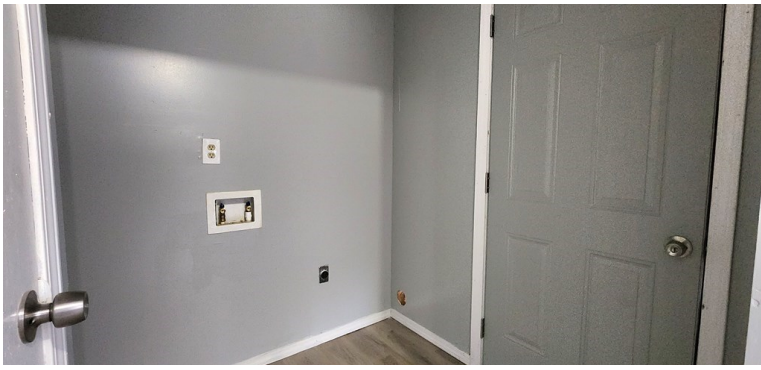
Trinity@TomSmithHomes.com

601.990.5070 office | 769.218.7860 cell



TomSmithLandandHomes.com

Information is believed to be accurate but not guaranteed.



Call me today!

TRINITY WEBB, REALTOR®
Trinity@TomSmithHomes.com
601.990.5070 office | 769.218.7860 cell



TomSmithLandandHomes.com

Information is believed to be accurate but not guaranteed.



Call me today!

TRINITY WEBB, REALTOR®
Trinity@TomSmithHomes.com
601.990.5070 office | 769.218.7860 cell



TomSmithLandandHomes.com

Information is believed to be accurate but not guaranteed.

AERIAL MAP



[Interactive Map Link](#)

Call me today!

TRINITY WEBB, REALTOR®
Trinity@TomSmithHomes.com
601.990.5070 **office** | 769.218.7860 **cell**



Expect More. Get More.

TomSmithLandandHomes.com

Information is believed to be accurate but not guaranteed.

OWNERSHIP MAP



Call me today!

TRINITY WEBB, REALTOR®

Trinity@TomSmithHomes.com
601.990.5070 **office** | 769.218.7860 **cell**

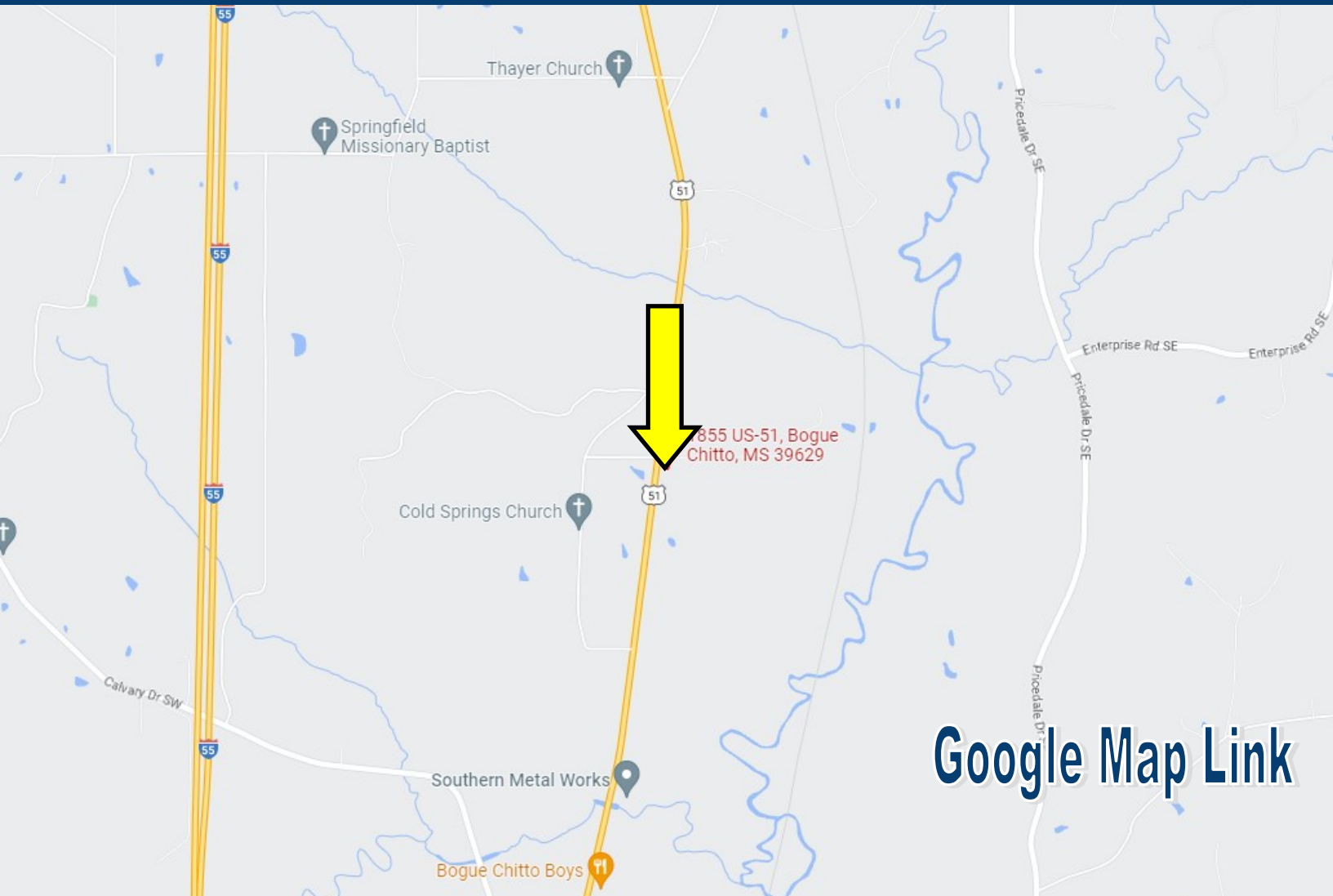


Expect More. Get More.

TomSmithLandandHomes.com

Information is believed to be accurate but not guaranteed.

DIRECTIONAL MAP



[Google Map Link](#)

Directions from the intersection of US-84 and Highway 51 in Brookhaven, MS: Travel south on US-51, in 6.0 miles, the property will be on the left. Address: 1855 Highway 51 SE, Bogue Chitto, MS.

Call me today!

TRINITY WEBB, REALTOR®
Trinity@TomSmithHomes.com
601.990.5070 **office** | 769.218.7860 **cell**



Expect More. Get More.

TomSmithLandandHomes.com

Information is believed to be accurate but not guaranteed.