

3 BED / 1 BATH HOME IN BROOKHAVEN, MS on 1± Acre in Lincoln County, MS



\$148,000

1386 MS-550 NW, Brookhaven, MS



This three bedroom, one bath home on 1± acre is located in Brookhaven, Lincoln County, MS. This property, in the Loyld Star School District and featuring a circle driveway, is the one you've been looking for! With over 2,000 sqft, you will have lots of room for privacy and entertaining. The home features a large room with a gas fireplace that could be a playroom, den, etc. There is a front living room as well, with a beautiful large window that lets in so much natural light! The huge kitchen has tons of cabinet and storage space. Only the stovetop remains. All electrical outlets have been replaced, with new floors and fresh paint. A new water heater was installed as well. Priced at less than \$82 a square foot is hard to find these days a move-in ready home! Located less than 10 minutes from Brookhaven, it's also super convenient!

Directions from I-55 in Brookhaven, MS: Take Exit 42 toward North Brookhaven. Travel .1 miles and keep right at the fork and merge onto Dunn-Ratcliff Rd NW. Travel 2.7 miles, then turn right onto MS-550 W. Travel 1.4 miles, and the property will be on the right. Address: 1386 MS-550 NW, Brookhaven, MS 39601



Call me today!

TRINITY WEBB, REALTOR®
Trinity@TomSmithHomes.com
601.990.5070 **office** | 769.218.7860 **cell**



TomSmithLandandHomes.com

Information is believed to be accurate but not guaranteed.



Call me today!

TRINITY WEBB, REALTOR®
Trinity@TomSmithHomes.com
601.990.5070 office | 769.218.7860 cell



TomSmithLandandHomes.com

Information is believed to be accurate but not guaranteed.



Call me today!

TRINITY WEBB, REALTOR®

Trinity@TomSmithHomes.com

601.990.5070 office | 769.218.7860 cell



TomSmithLandandHomes.com

Information is believed to be accurate but not guaranteed.



Call me today!

TRINITY WEBB, REALTOR®
Trinity@TomSmithHomes.com
601.990.5070 office | 769.218.7860 cell



TomSmithLandandHomes.com

Information is believed to be accurate but not guaranteed.

Aerial Map



Interactive Map Link

Call me today!

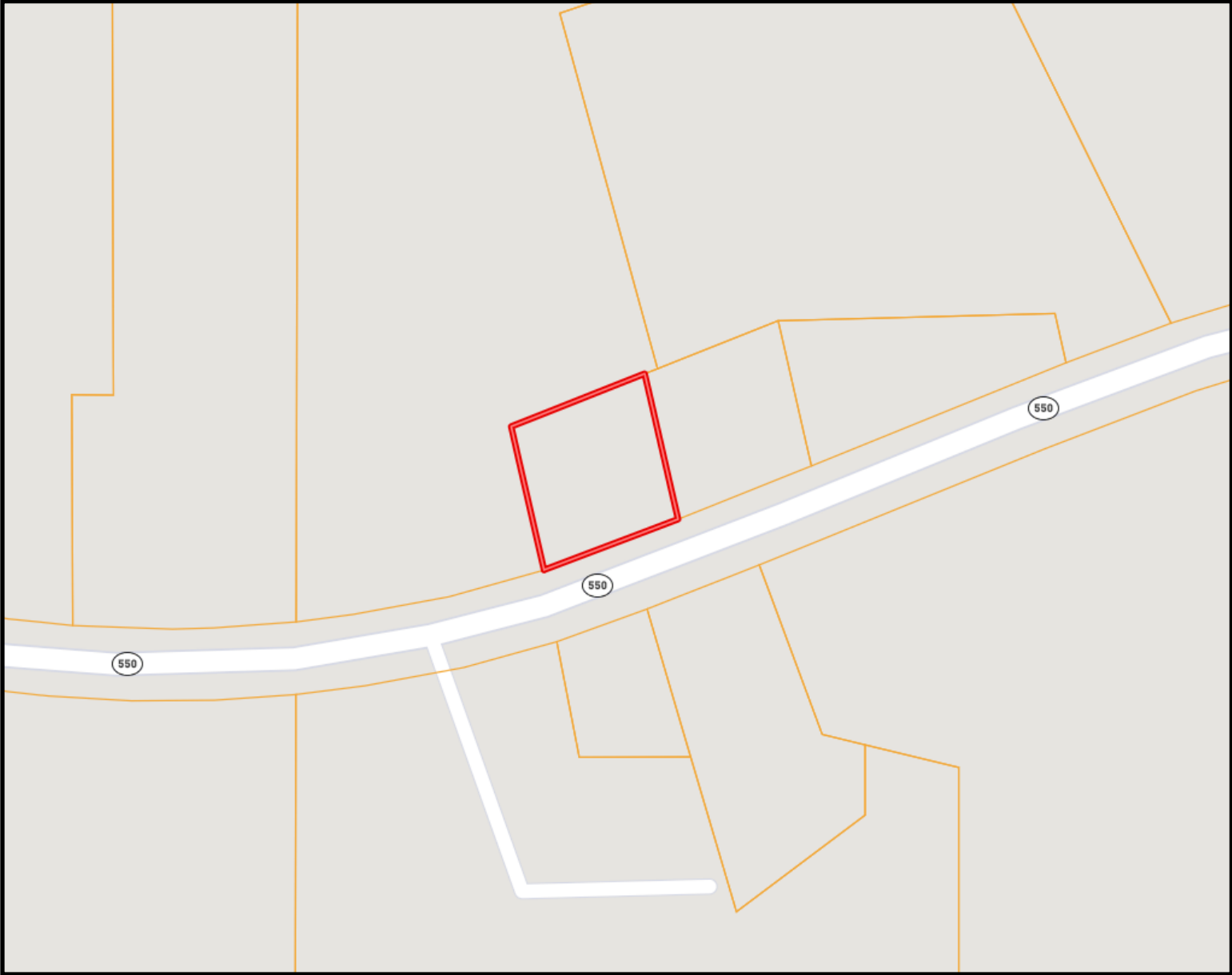
TRINITY WEBB, REALTOR®
Trinity@TomSmithHomes.com
601.990.5070 office | 769.218.7860 cell



TomSmithLandandHomes.com

Information is believed to be accurate but not guaranteed.

Ownership Map



Call me today!

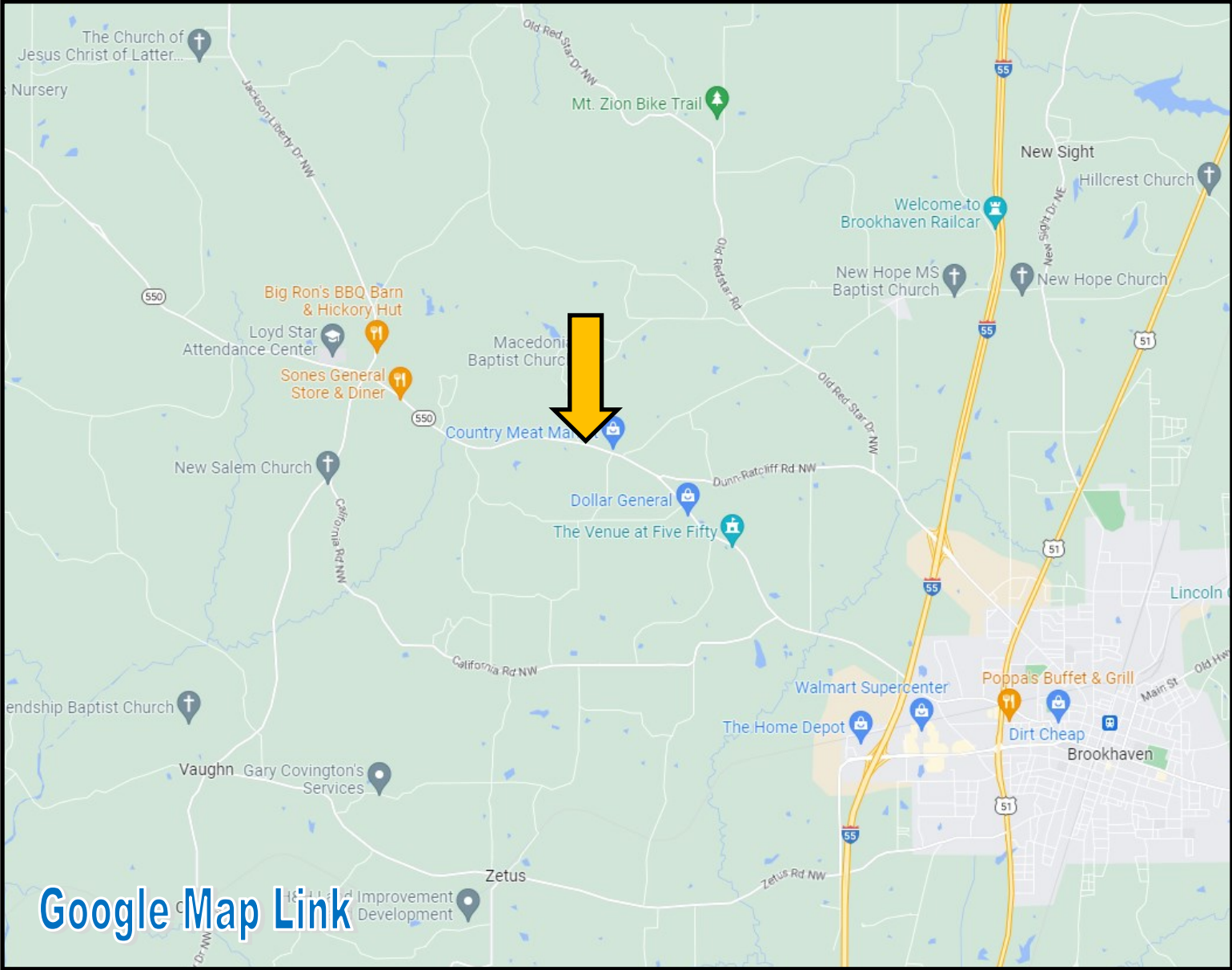
TRINITY WEBB, REALTOR®
Trinity@TomSmithHomes.com
601.990.5070 **office** | 769.218.7860 **cell**



TomSmithLandandHomes.com

Information is believed to be accurate but not guaranteed.

Directional Map



Directions from I-55 in Brookhaven, MS: Take Exit 42 toward North Brookhaven. Travel .1 miles and keep right at the fork and merge onto Dunn-Ratcliff Rd NW. Travel 2.7 miles, then turn right onto MS-550 W. Travel 1.4 miles and the property will be on the right. Address: 1386 MS-550 NW, Brookhaven, MS 39601

Call me today!

TRINITY WEBB, REALTOR®
Trinity@TomSmithHomes.com
601.990.5070 **office** | 769.218.7860 **cell**



TomSmithLandandHomes.com

Information is believed to be accurate but not guaranteed.