

Home on 0.39+/- Acres Attala County, MS



**634 E Adams Street
Kosciusko, MS 39090**



\$42,000

Check out this newly remodeled one bedroom, one bath, 800+/- sq ft home situated on 0.39+/- acres in Attala County, MS. You don't want to miss out on this potential income-producing property in Kosciusko. Call Danny today to schedule a viewing!

Directions from Hwy 12 E in Kosciusko, MS: From Hwy 12, turn right onto W Adams Street. In 1.8 miles, the property will be on the left. Address: 634 E Adams Street Kosciusko, MS 39090

[Click for Google Map](#)



Call me today!

DANNY WILLOUGHBY, REALTOR®
Danny@TomSmithLand.com
601.898.2772 **office** | 601.720.9995 **cell**



Expect More. Get More.

TomSmithLandandHomes.com

Information is believed to be accurate but not guaranteed.



Call me today!

DANNY WILLOUGHBY, REALTOR®
Danny@TomSmithLand.com
601.898.2772 office | 601.720.9995 cell



Expect More. Get More.

TomSmithLandandHomes.com

Information is believed to be accurate but not guaranteed.

Aerial Map



[Click for Interactive Map](#)



Call me today!

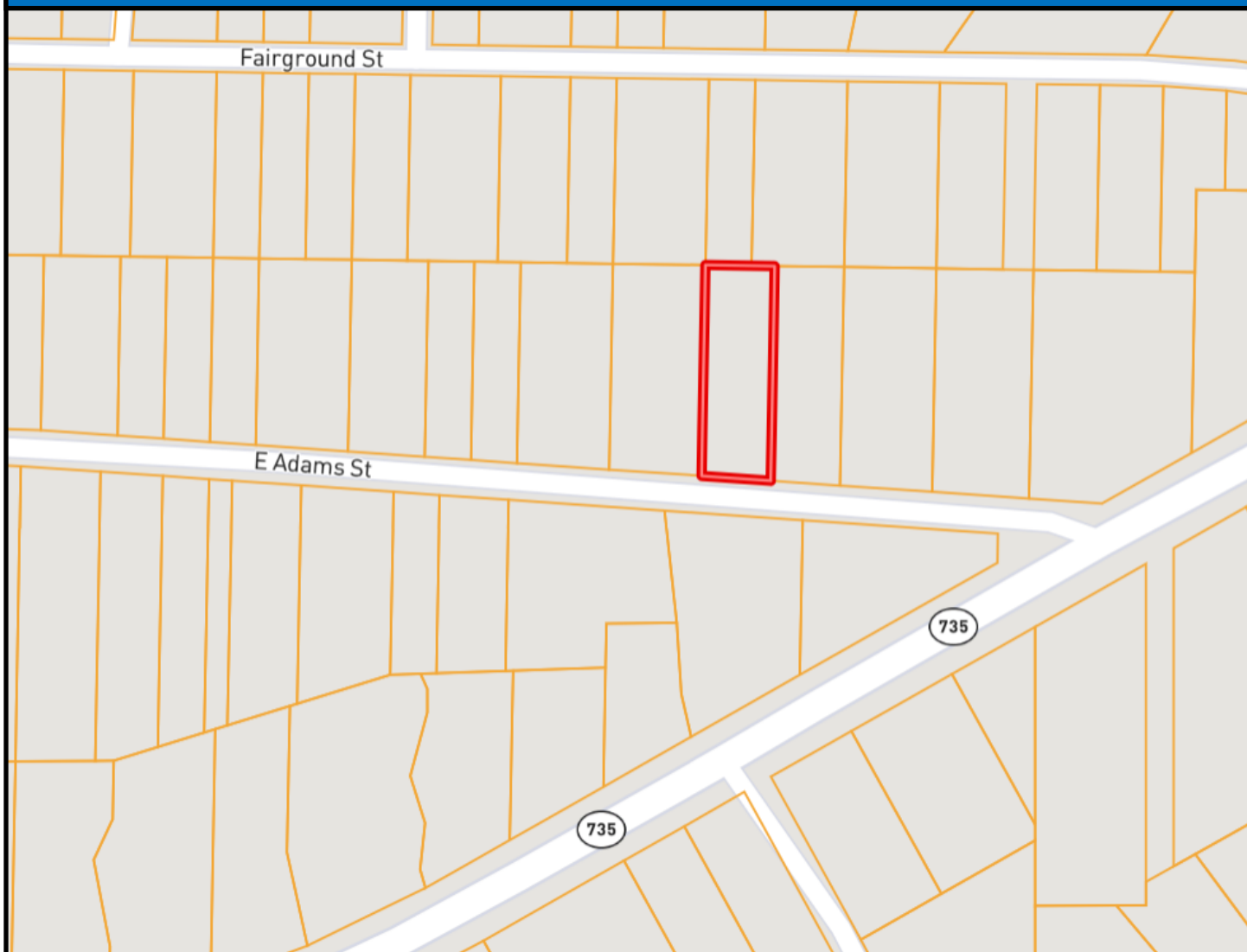
DANNY WILLOUGHBY, REALTOR®
Danny@TomSmithLand.com
601.898.2772 office | 601.720.9995 cell



TomSmithLandandHomes.com

Information is believed to be accurate but not guaranteed.

Ownership Map



Call me today!

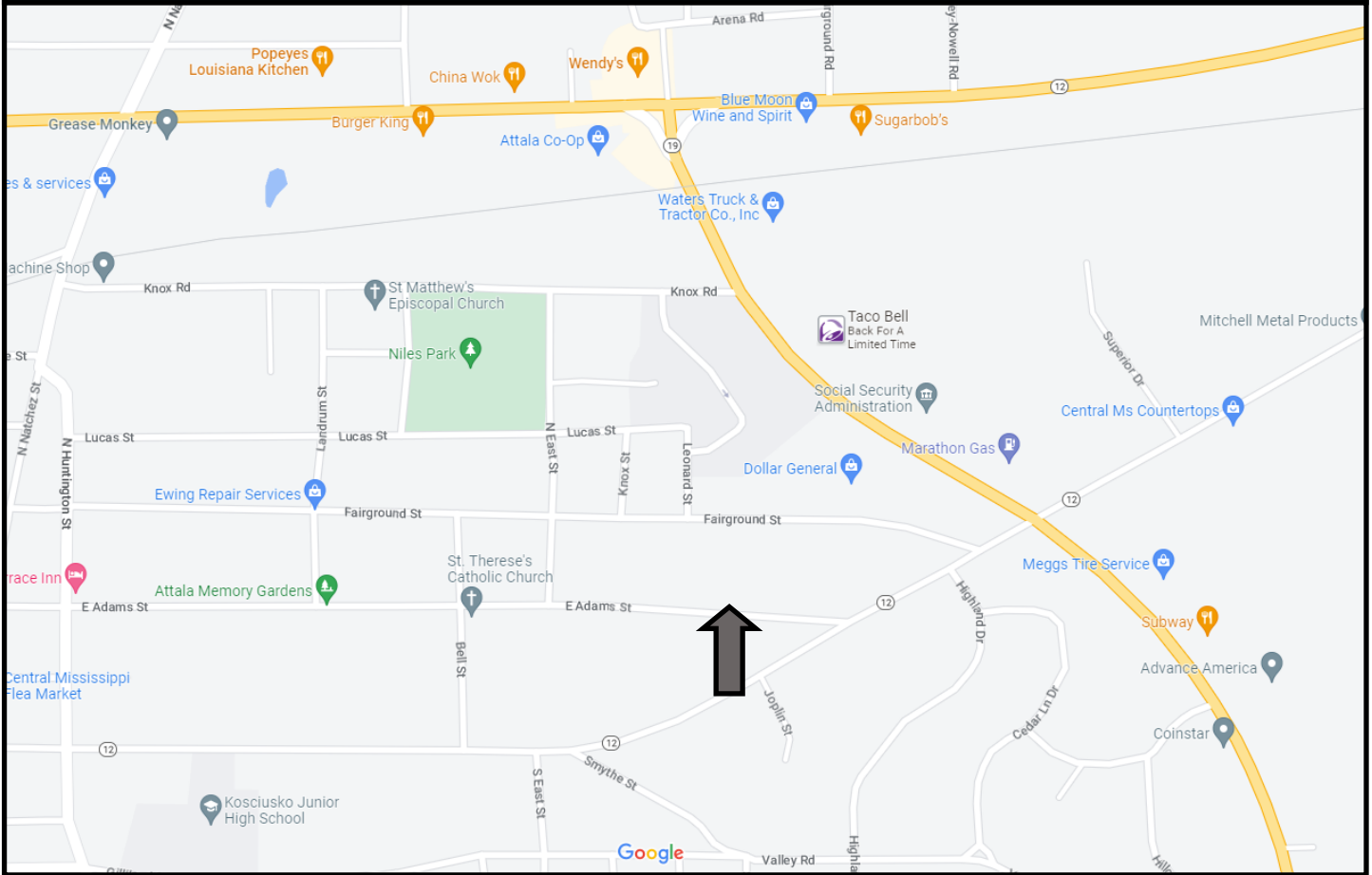
DANNY WILLOUGHBY, REALTOR®
Danny@TomSmithLand.com
601.898.2772 office | 601.720.9995 cell



TomSmithLandandHomes.com

Information is believed to be accurate but not guaranteed.

Directional Map



Directions from Hwy 12 E in Kosciusko, MS: From Hwy 12, turn right onto W Adams Street. In 1.8 miles, the property will be on the left. Address: 634 E Adams Street Kosciusko, MS 39090

[Click for Google Map](#)



Call me today!

DANNY WILLOUGHBY, REALTOR®
Danny@TomSmithLand.com
601.898.2772 office | 601.720.9995 cell



TomSmithLandandHomes.com

Information is believed to be accurate but not guaranteed.