

0.80+/- ACRE RESIDENTIAL LOT  
LOCATED IN EUPORA  
WEBSTER COUNTY, MS

 \$15,000



Look at this 0.80+/- acre residential lot in Webster County, MS! Located in Eupora, MS, in the Magnolia Heights subdivision; this lot provides an excellent location to build a home with easy access to nearby amenities and entertainment. This property is mostly cleared, with a few mature trees that run along the Southern boundary. This property is only 10 minutes from Mathiston and 35 minutes from Starkville. Restrictive covenants do apply. For more information or to schedule a private showing, call Walker Trantum!

**Directions from Intersection of Hwy 82 and Hwy 9 in Eupora:** Travel Southwest on Waterworks Road for 0.6 miles. Turn left onto Pecan Avenue and travel 0.2 miles. The property will be on your left.



*Call me today!*

**WALKER TRANUM, REALTOR®**  
Walker@TomSmithHomes.com  
662.268.6333 **office** | 662.769.1442 **cell**



**TomSmithLandandHomes.com**

Information is believed to be accurate but not guaranteed.





*Call me today!*

**WALKER TRANUM, REALTOR®**  
 Walker@TomSmithHomes.com  
 662.268.6333 **office** | 662.769.1442 **cell**



**TomSmithLandandHomes.com**

Information is believed to be accurate but not guaranteed.



## Interactive Aerial Map



*Call me today!*

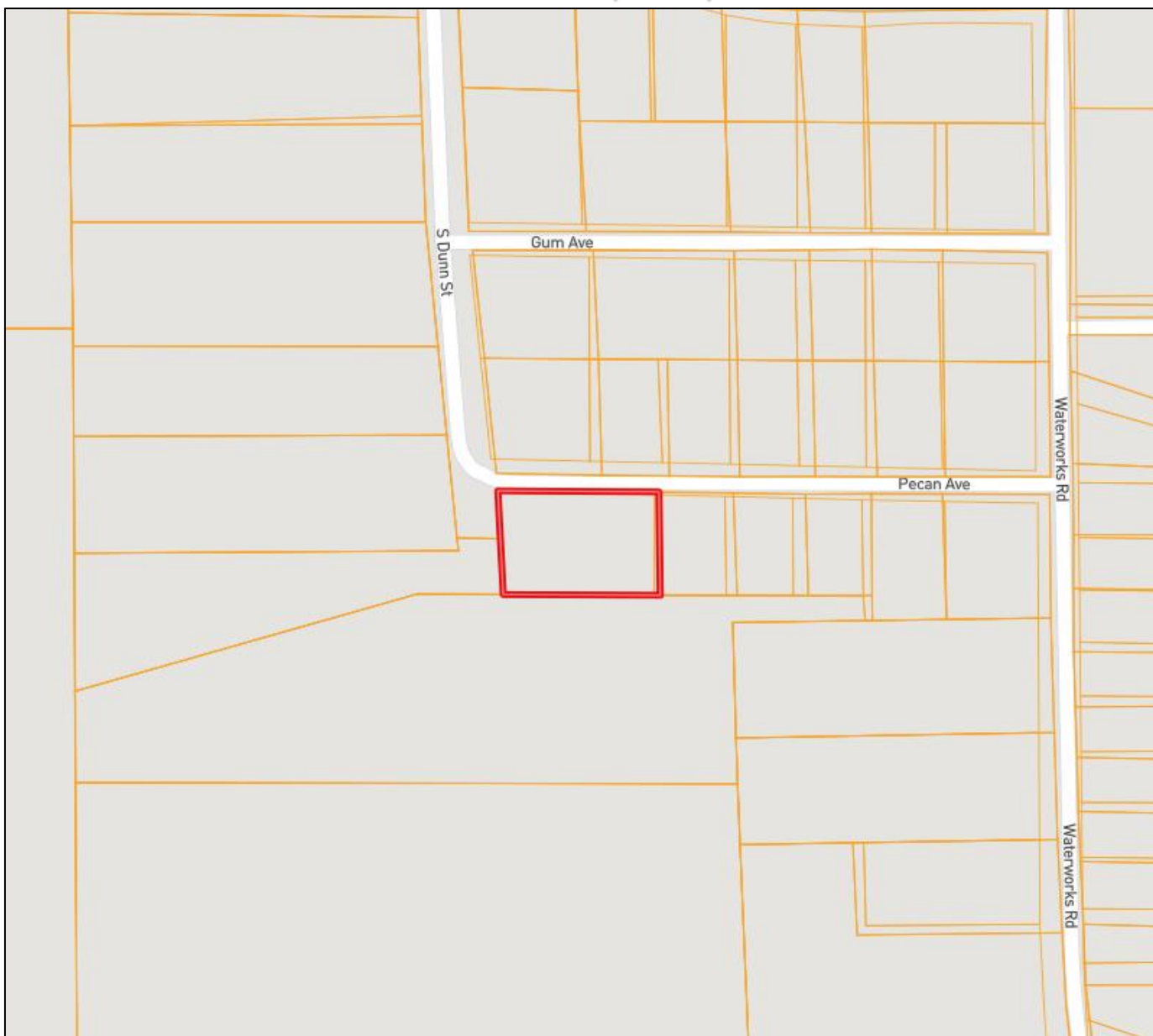
**WALKER TRANUM, REALTOR®**  
Walker@TomSmithHomes.com  
662.268.6333 **office** | 662.769.1442 **cell**



**TomSmithLandandHomes.com**

Information is believed to be accurate but not guaranteed.

## Ownership Map



*Call me today!*

**WALKER TRANUM**, REALTOR®  
Walker@TomSmithHomes.com  
662.268.6333 **office** | 662.769.1442 **cell**

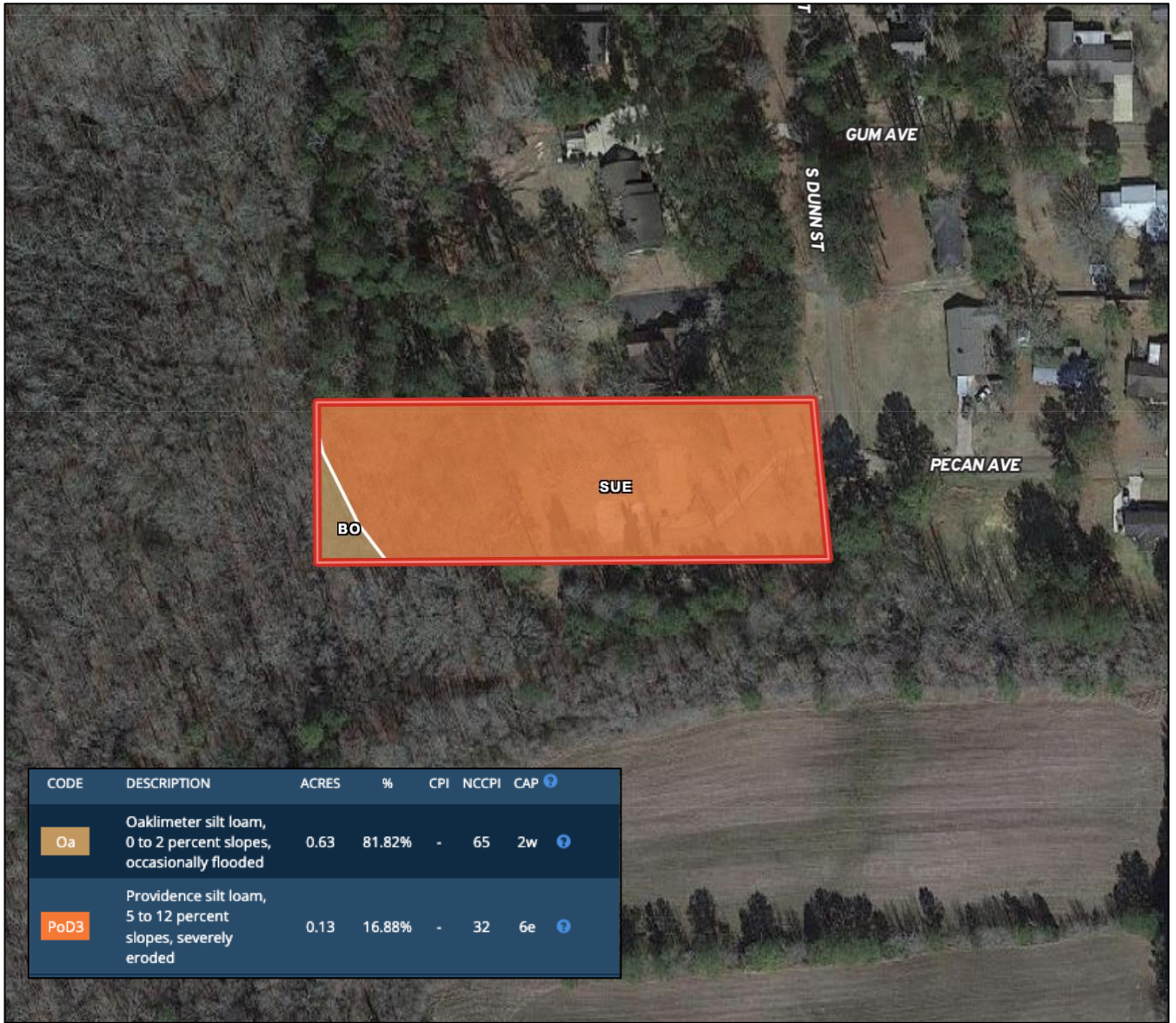


**TomSmithLandandHomes.com**

Information is believed to be accurate but not guaranteed.



# Soil Map and Soil Description



*Call me today!*

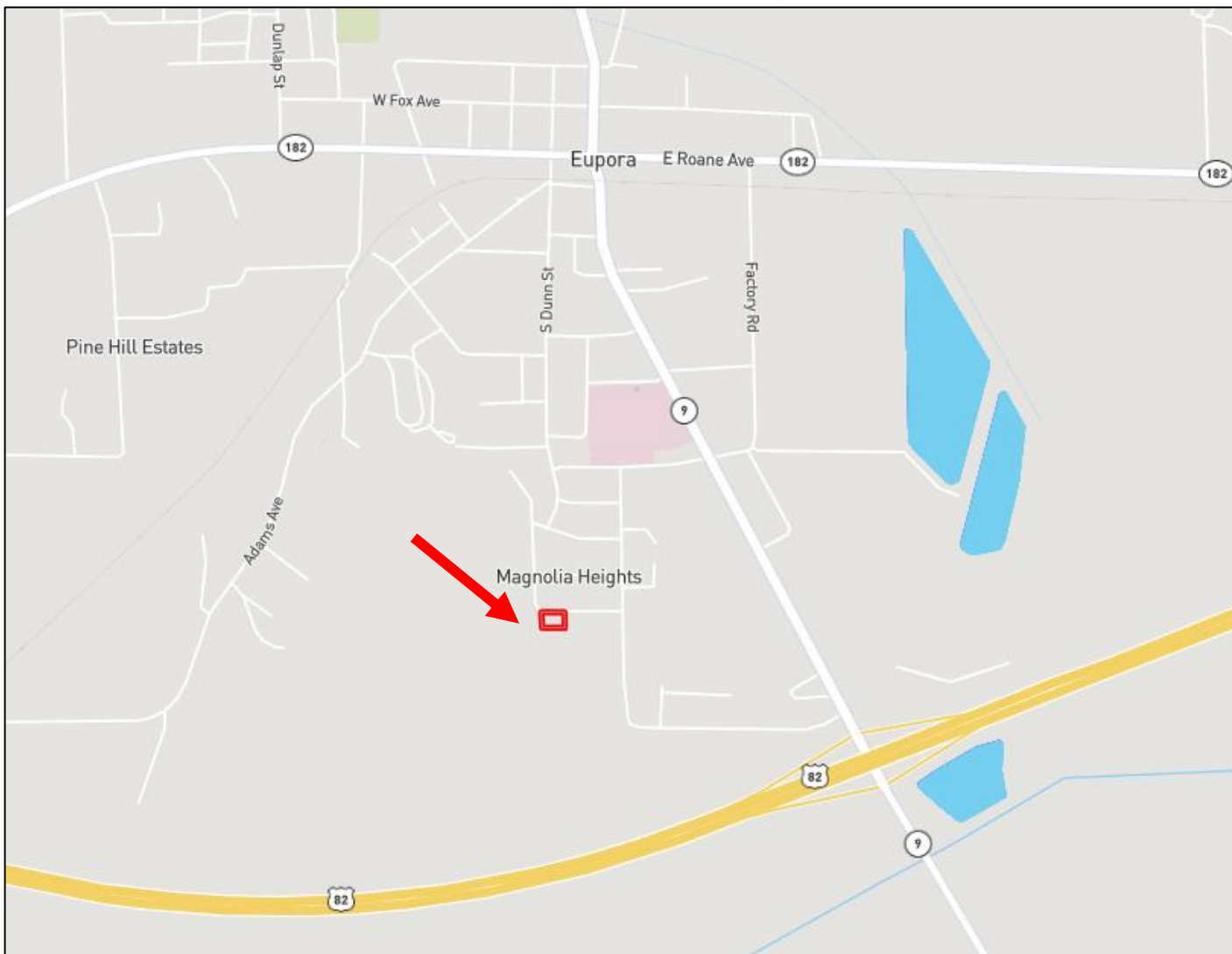
**WALKER TRANUM, REALTOR®**  
Walker@TomSmithHomes.com  
662.268.6333 office | 662.769.1442 cell



**TomSmithLandandHomes.com**

Information is believed to be accurate but not guaranteed.

# Directional Map



**Directions from Intersection of Hwy 82 and Hwy 9 in Eupora:** Travel Southwest on Waterworks Road for 0.6 miles. Turn left onto Pecan Avenue and travel 0.2 miles. The property will be on your left.

[GOOGLE MAP LINK](#)

*Call me today!*

**WALKER TRANUM, REALTOR®**  
Walker@TomSmithHomes.com  
662.268.6333 **office** | 662.769.1442 **cell**



**TomSmithLandandHomes.com**

Information is believed to be accurate but not guaranteed.

