

77.8 +/- Acre Ten House Poultry Farm

Lawrence County, MS



10 House poultry broiler farm located in Lawrence County, MS situated on 77.81+/- surveyed acres. This farm was established in 1995 as an 8 house farm by the current seller, in 1999 two additional houses were added. The farm was extensively upgraded in 2021 to include Plasson drinkers, new water lines, new feed lines, new Rotem computers, Georgia Poultry feed bins, new tunnel fans, new cool cells, new vent doors, and more. The majority of the houses run 54 inch Windstorm fans with houses 1 and 6 running 48 inch fans. The houses are equipped with Innovation dimmers and LED lighting. Two 150KW Generators are set to come on in event of power outage. If the generators ever fail the drop curtain siding will keep your flock from overheating. This farm has a contract with one of the most prestigious poultry business around and consistently puts out 7+ lb. birds with 95%+ survival rates. There are three wells in good repair servicing this farm. Propane tanks are leased from Jack Morris Gas. Litter shed with dividers and equipment shed are on site. Approximately 40 acres of the property consist of fenced pasture land. As an added bonus this farm has some woods and an established food plot with a shooting house. This farm is ideally centered between Brookhaven, McComb, Monticello, Tylertown, and Columbia, Mississippi. Please schedule showings at least 48 hours in advance as this is an operational farm.

Directions from the intersection of HWY 584 & 44:

[Google map link.](#)

Turn onto MS 44E and travel for 3.4 miles. Turn right onto Dummy Line Rd and continue for 1 mile the destination will be on the left.

Call me today!

BLAKE SASSER, REALTOR®
Blake@TomSmithLand.com
601.990.5070 office | 601.757.5027 cell



TomSmithLandandHomes.com

Information is believed to be accurate but not guaranteed.



Call me today!

BLAKE SASSER, REALTOR®
 Blake@TomSmithLand.com
 601.990.5070 **office** | 601.757.5027 **cell**

**Tom
 Smith
 LAND AND
 HOMES**

Expect More. Get More.



TomSmithLandandHomes.com

Information is believed to be accurate but not guaranteed.



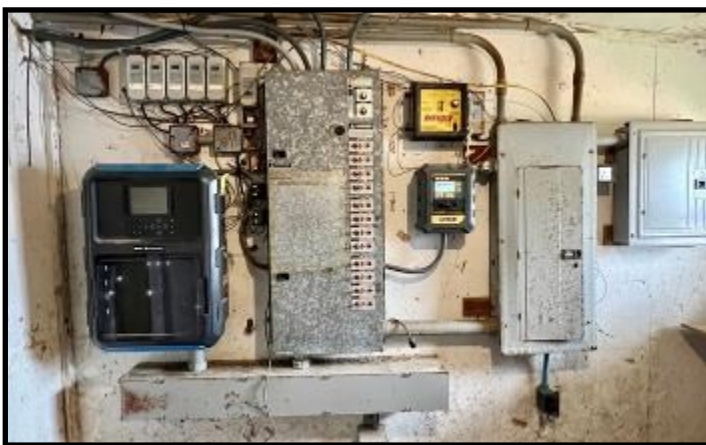
Call me today!

BLAKE SASSER, REALTOR®
 Blake@TomSmithLand.com
 601.990.5070 office | 601.757.5027 cell



TomSmithLandandHomes.com

Information is believed to be accurate but not guaranteed.



Call me today!

BLAKE SASSER, REALTOR®
 Blake@TomSmithLand.com
 601.990.5070 office | 601.757.5027 cell

**Tom
 Smith
 LAND AND
 HOMES**

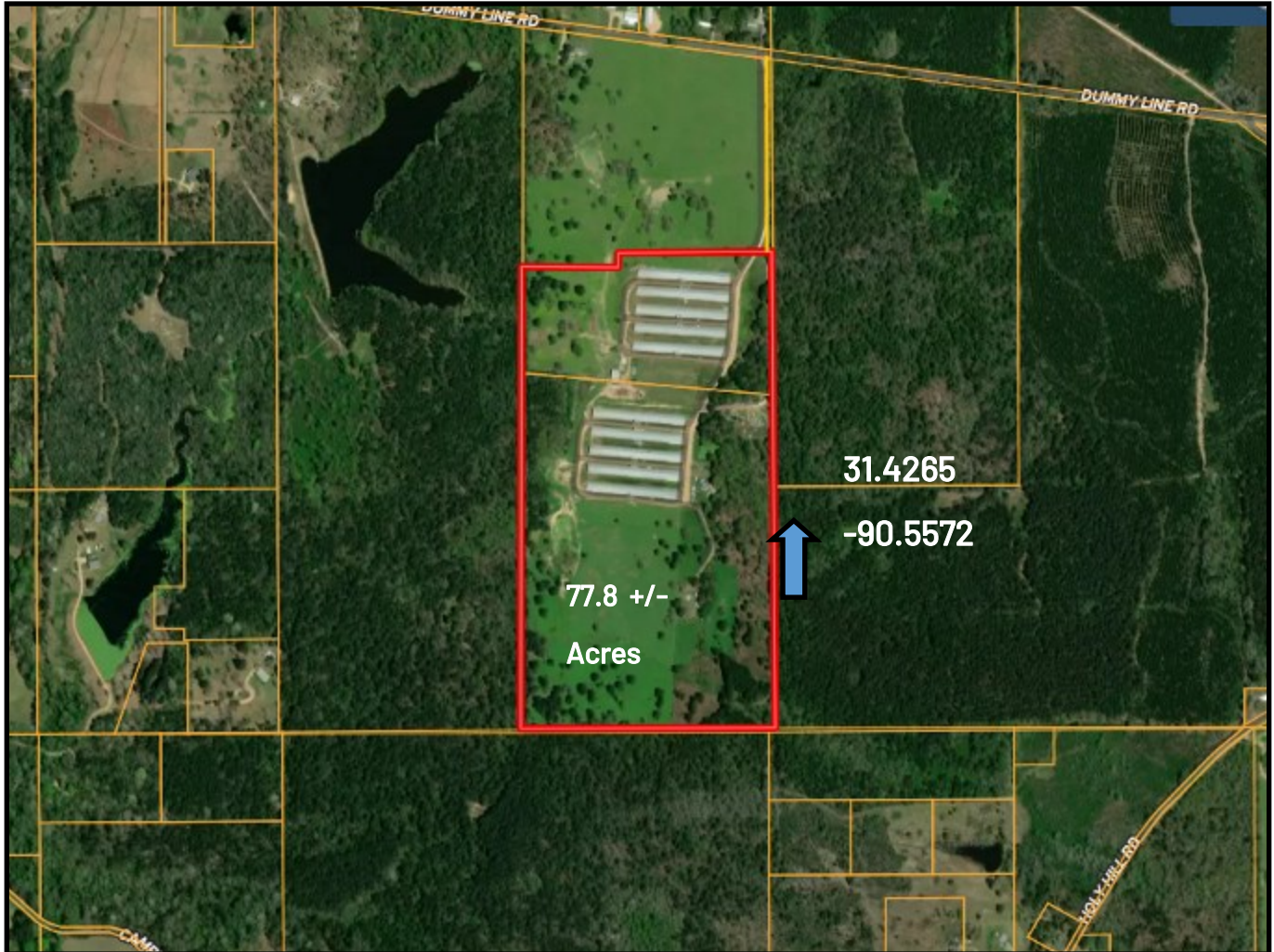
Expect More. Get More.



TomSmithLandandHomes.com

Information is believed to be accurate but not guaranteed.

Aerial Map



[Click here for an interactive map link.](#)

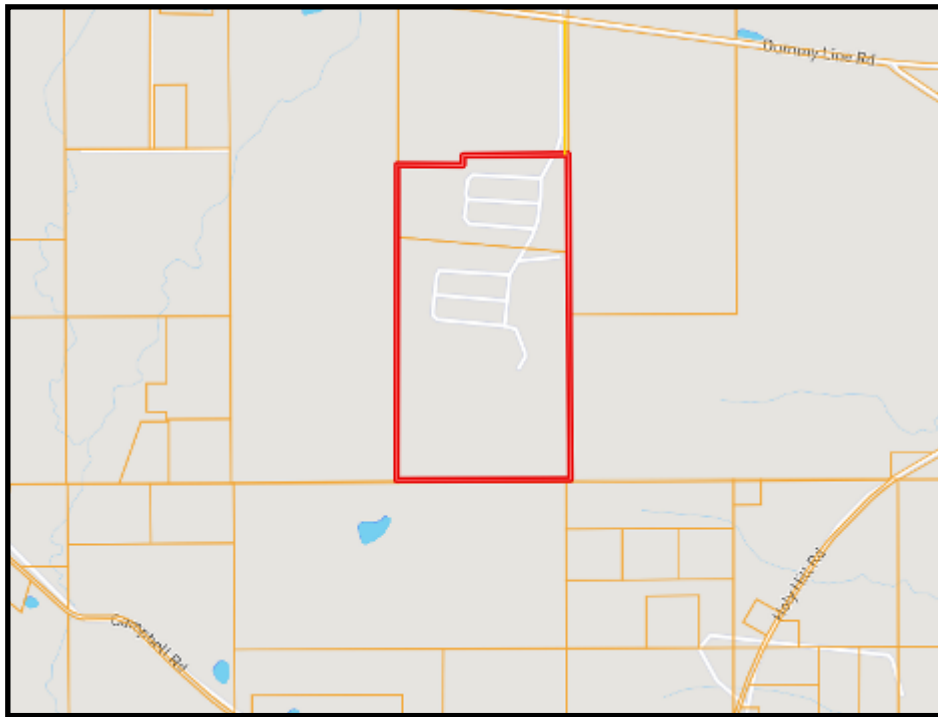
Call me today!

BLAKE SASSER, REALTOR®
Blake@TomSmithLand.com
601.990.5070 **office** | 601.757.5027 **cell**



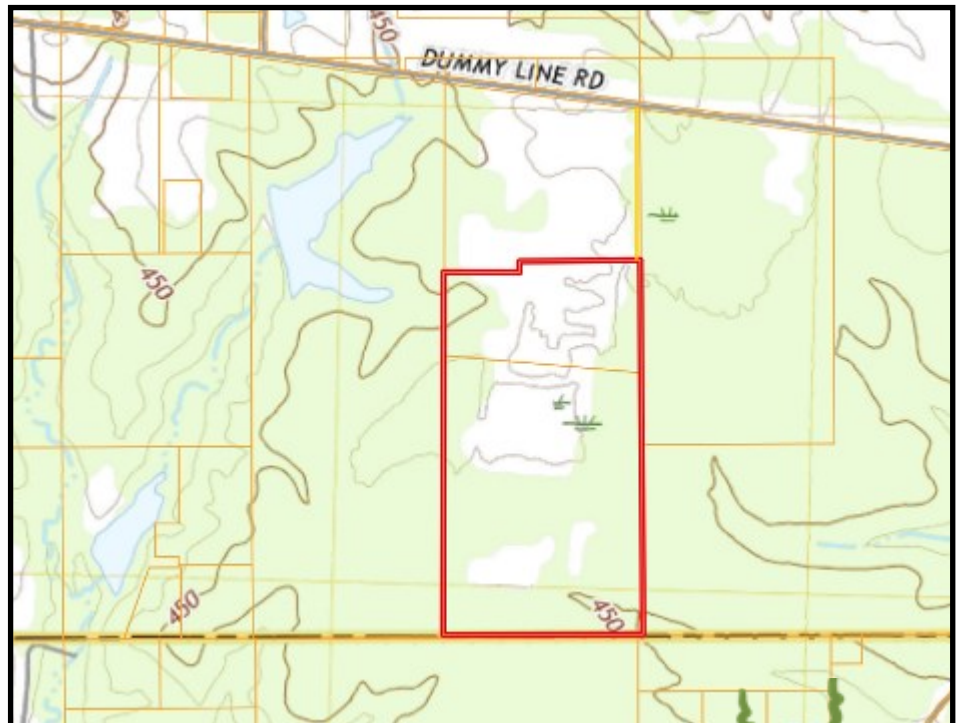
TomSmithLandandHomes.com

Information is believed to be accurate but not guaranteed.



Ownership
Map

Topo
Map



Call me today!

BLAKE SASSER, REALTOR®
 Blake@TomSmithLand.com
 601.990.5070 **office** | 601.757.5027 **cell**



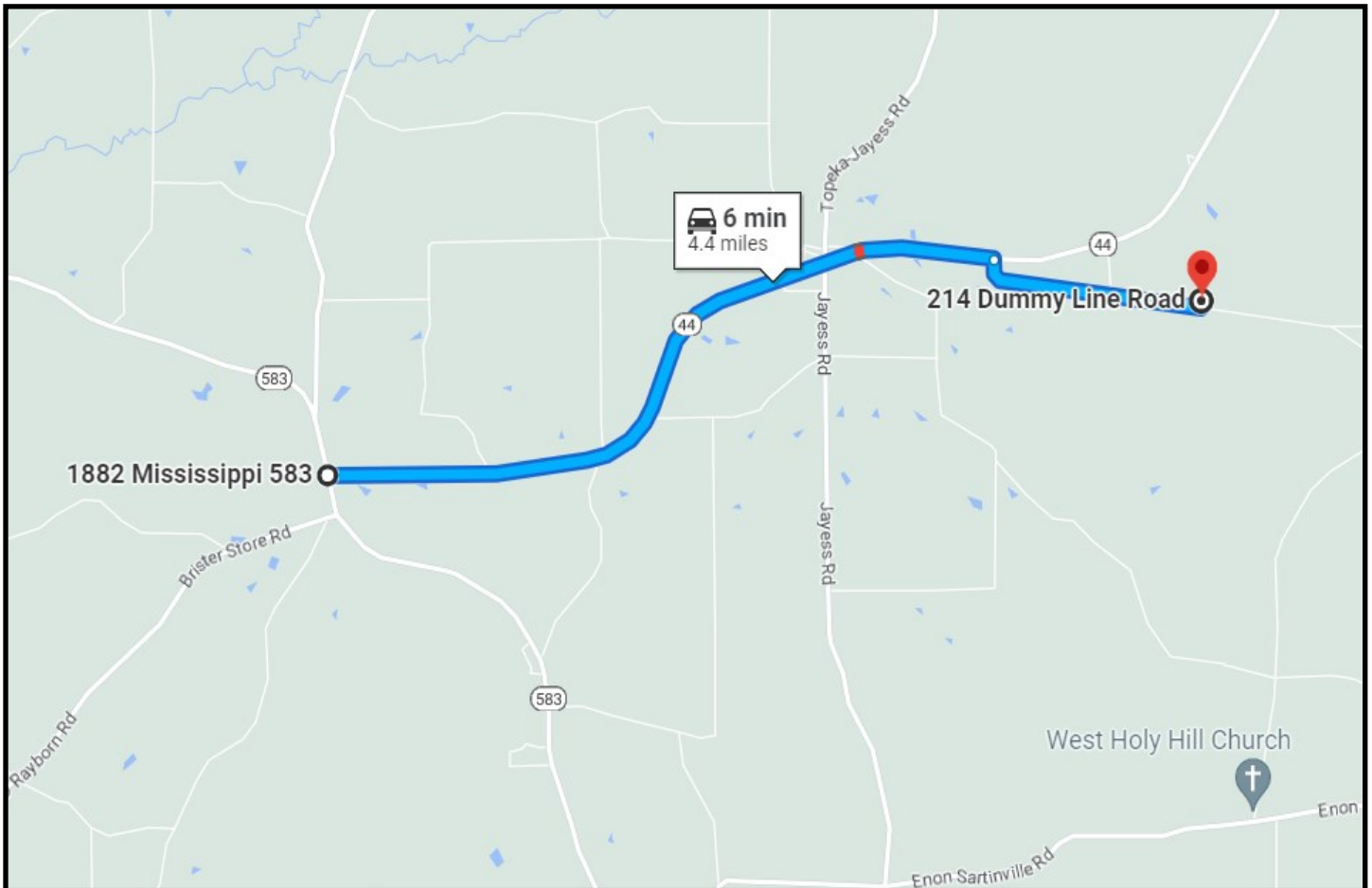
Expect More. Get More.



TomSmithLandandHomes.com

Information is believed to be accurate but not guaranteed.

Directional Map



Directions from the intersection of HWY 584 & 44:

Turn onto MS 44E and travel for 3.4 miles. Turn right onto Dummy Line Rd and continue for 1 mile the destination will be on the left.

[Google map link.](#)

Call me today!

BLAKE SASSER, REALTOR®
Blake@TomSmithLand.com
601.990.5070 **office** | 601.757.5027 **cell**



TomSmithLandandHomes.com

Information is believed to be accurate but not guaranteed.