



Modern Updated Family Home BOLIVAR COUNTY, MS



\$325,000

1313 Memorial Drive Cleveland, MS 38732

Welcome to your new modern, updated home in Bolivar County, Cleveland, MS. This four bedroom, three bathroom, two-story house with a two-car carport has lots to offer. The house features a 1-year-old 30-year architectural roof and has modern updates, including the kitchen with granite countertops and stainless steel appliances. The living room has a natural gas fireplace and a lovely sunroom coming in from the carport. With over 2,894 sqft, this house has plenty to offer and lots of space for family and friends! There is also a large fenced-in backyard, where you will find three sheds to store all your outdoor toys and lawn equipment. Give Anthony a call today to schedule your private showing!



2011-2022
AMERICA'S
BEST
BROKERAGES

*Call me
today!*

ANTHONY STEEN, REALTOR®
Anthony@TomSmithLand.com
662.441.2500 **office** | 662.645.5151 **cell**



Expect More. Get More.

TomSmithLandandHomes.com

Information is believed to be accurate but not guaranteed.



Call me today!

ANTHONY STEEN, REALTOR®
Anthony@TomSmithLand.com
662.441.2500 office | 662.645.5151 cell



TomSmithLandandHomes.com

Information is believed to be accurate but not guaranteed.



Call me today!

ANTHONY STEEN, REALTOR®

Anthony@TomSmithLand.com

662.441.2500 **office** | 662.645.5151 **cell**



Expect More. Get More.



TomSmithLandandHomes.com

Information is believed to be accurate but not guaranteed.



Call me today!

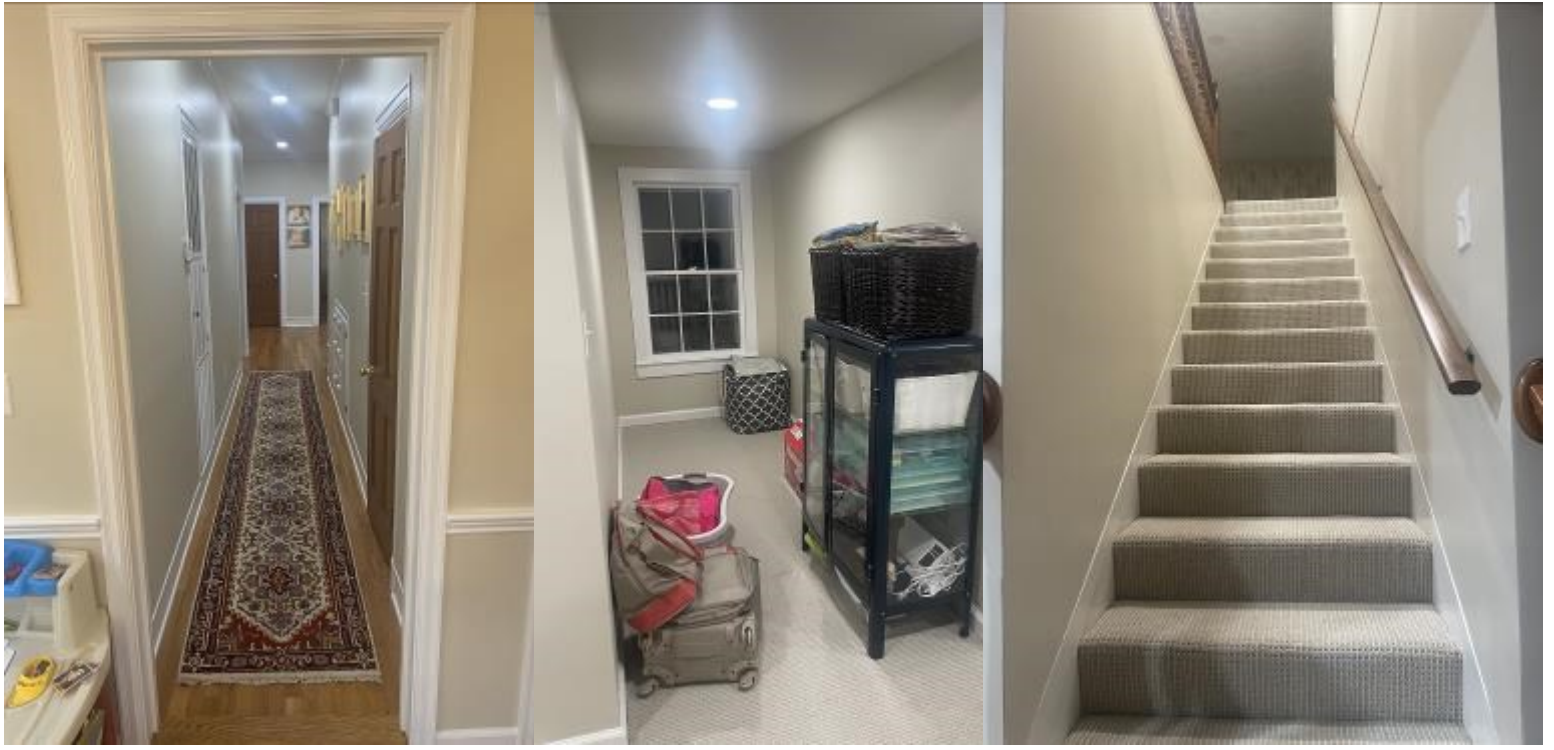
ANTHONY STEEN, REALTOR®
Anthony@TomSmithLand.com
662.441.2500 **office** | 662.645.5151 **cell**



Expect More. Get More.

TomSmithLandandHomes.com

Information is believed to be accurate but not guaranteed.



Call me today!

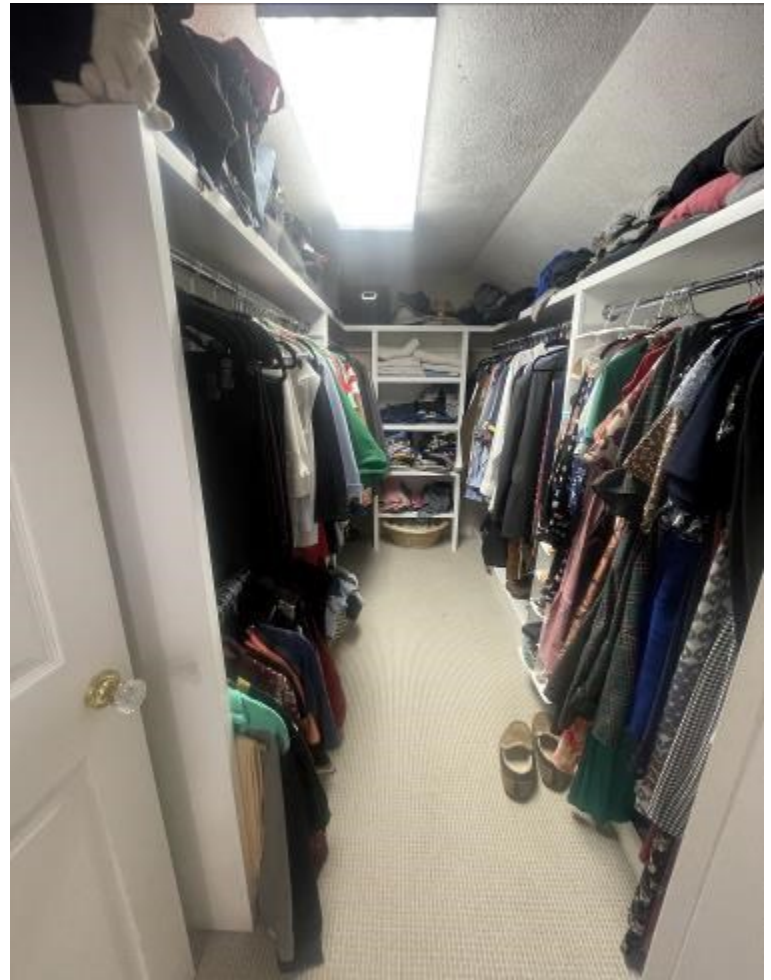
ANTHONY STEEN, REALTOR®
 Anthony@TomSmithLand.com
 662.441.2500 office | 662.645.5151 cell



Expect More. Get More.

TomSmithLandandHomes.com

Information is believed to be accurate but not guaranteed.



Call me today!

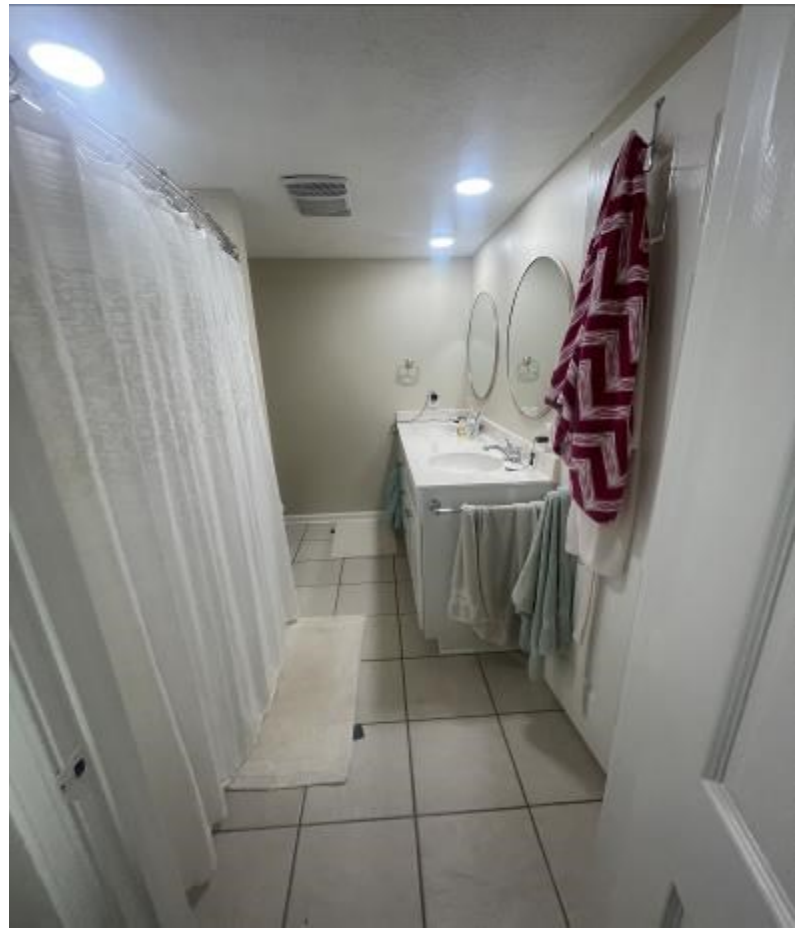
ANTHONY STEEN, REALTOR®
Anthony@TomSmithLand.com
662.441.2500 **office** | 662.645.5151 **cell**



Expect More. Get More.

TomSmithLandandHomes.com

Information is believed to be accurate but not guaranteed.



Call me today!

ANTHONY STEEN, REALTOR®
Anthony@TomSmithLand.com
662.441.2500 office | 662.645.5151 cell



Expect More. Get More.

TomSmithLandandHomes.com

Information is believed to be accurate but not guaranteed.



Call me today!

ANTHONY STEEN, REALTOR®
Anthony@TomSmithLand.com
662.441.2500 office | 662.645.5151 cell



Expect More. Get More.

TomSmithLandandHomes.com

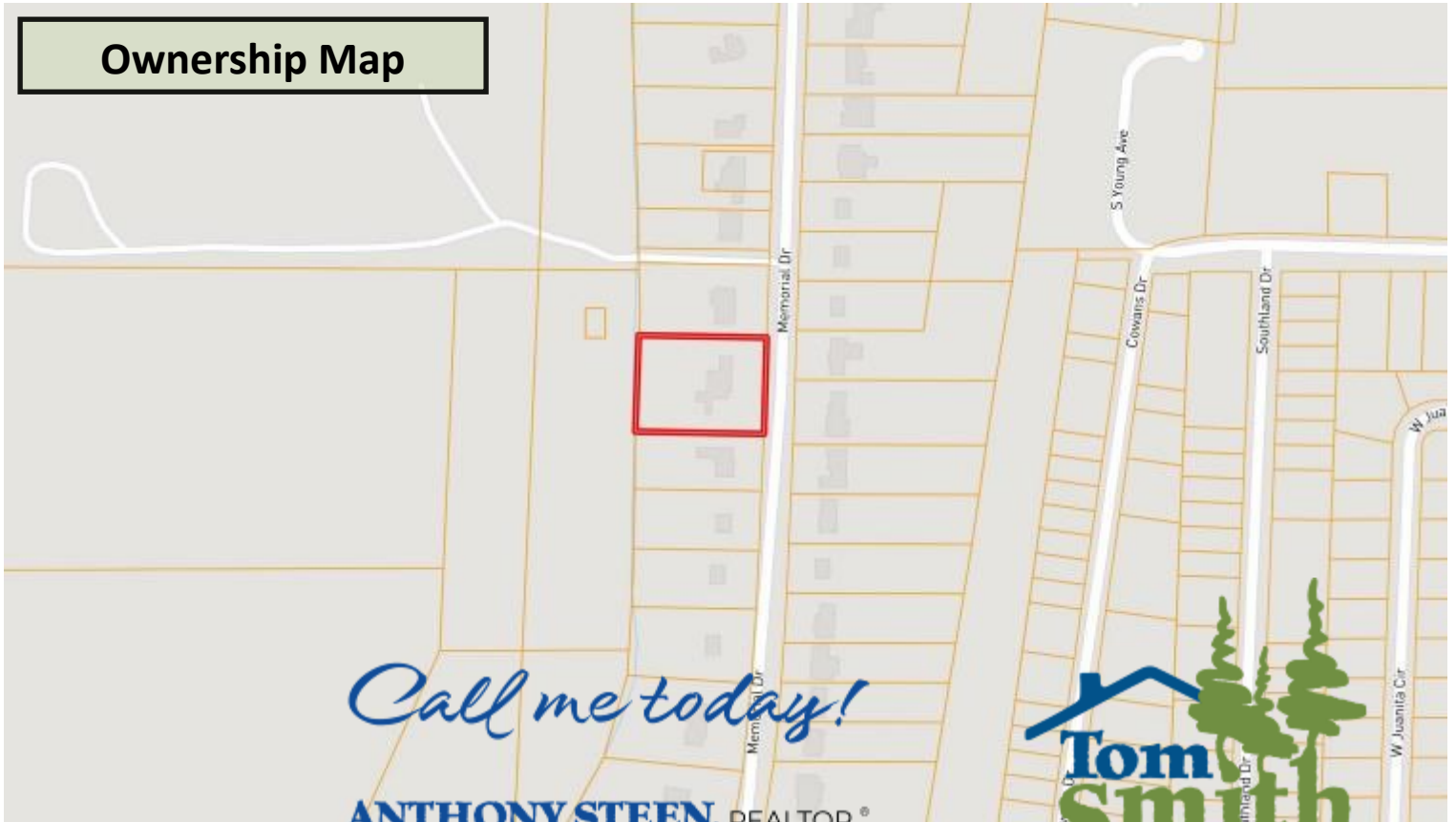
Information is believed to be accurate but not guaranteed.

Aerial Map

[CLICK HERE FOR AN INTERACTIVE MAP](#)



Ownership Map



Call me today!

ANTHONY STEEN, REALTOR®

Anthony@TomSmithLand.com

662.441.2500 office | 662.645.5151 cell



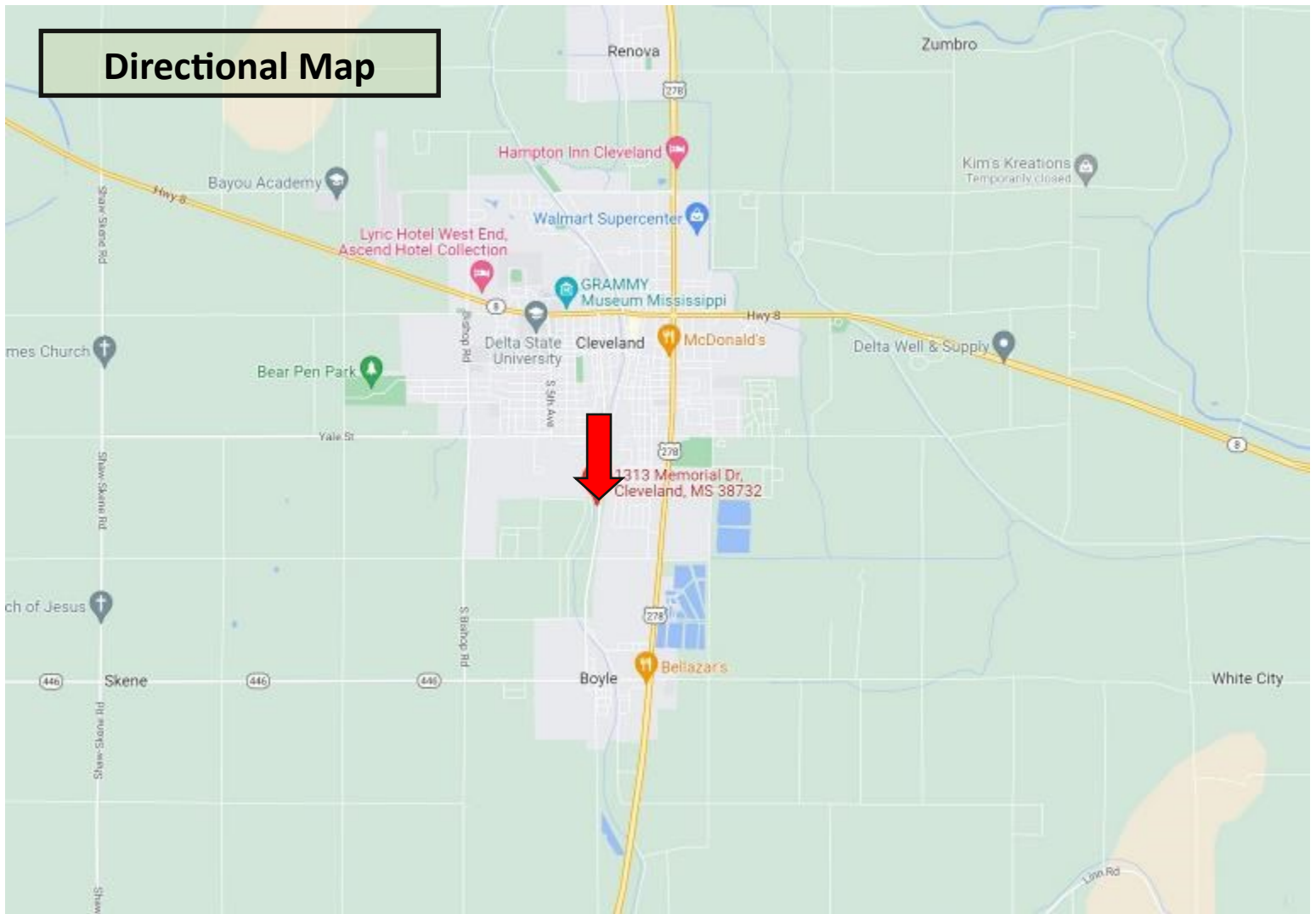
Expect More. Get More.



TomSmithLandandHomes.com

Information is believed to be accurate but not guaranteed.

Directional Map



Directions from the Intersection of Hwy 8 and Hwy 278 in Cleveland, MS: Travel west on E Sunflower Road toward N Chrisman Avenue for .6 of a mile. Turn left onto N Leflore Avenue and travel 1 mile. Continue onto Memorial Drive for .5 miles, the house will be on your right.
1313 Memorial Drive Cleveland, MS 38732—Click for Directions



2011-2022
AMERICA'S
BEST
BROKERAGES

Call me today!

ANTHONY STEEN, REALTOR®
Anthony@TomSmithLand.com
662.441.2500 office | 662.645.5151 cell



TomSmithLandandHomes.com

Information is believed to be accurate but not guaranteed.