

2+/- ACRE RESIDENTIAL LOT LOCATED IN EUPORA WEBSTER COUNTY, MS



Look at this 2+/- acre residential lot in Webster County, MS! Located in Eupora, MS and within the Magnolia Heights subdivision, this lot provides an excellent location to build a home with easy access to nearby amenities and entertainment. There is already an established driveway which will save a new owner some initial expenses. This property is located 10 minutes from Mathiston and 35 minutes from Starkville. Restrictive covenants do apply. For more information, or to schedule a private showing, call Walker Trnum!

Directions from Intersection of Hwy 82 and Hwy 9 in Eupora: Travel Southwest on Waterworks Road for 0.6 miles. Turn left onto Pecan Avenue and travel 0.2 miles. The property will be on your left.



Call me today!

WALKER TRANUM, REALTOR®
Walker@TomSmithHomes.com
662.268.6333 office | 662.769.1442 cell



TomSmithLandandHomes.com

Information is believed to be accurate but not guaranteed.



Call me today!

WALKER TRANUM, REALTOR®
Walker@TomSmithHomes.com
662.268.6333 **office** | 662.769.1442 **cell**



TomSmithLandandHomes.com

Information is believed to be accurate but not guaranteed.

Interactive Aerial Map



Call me today!

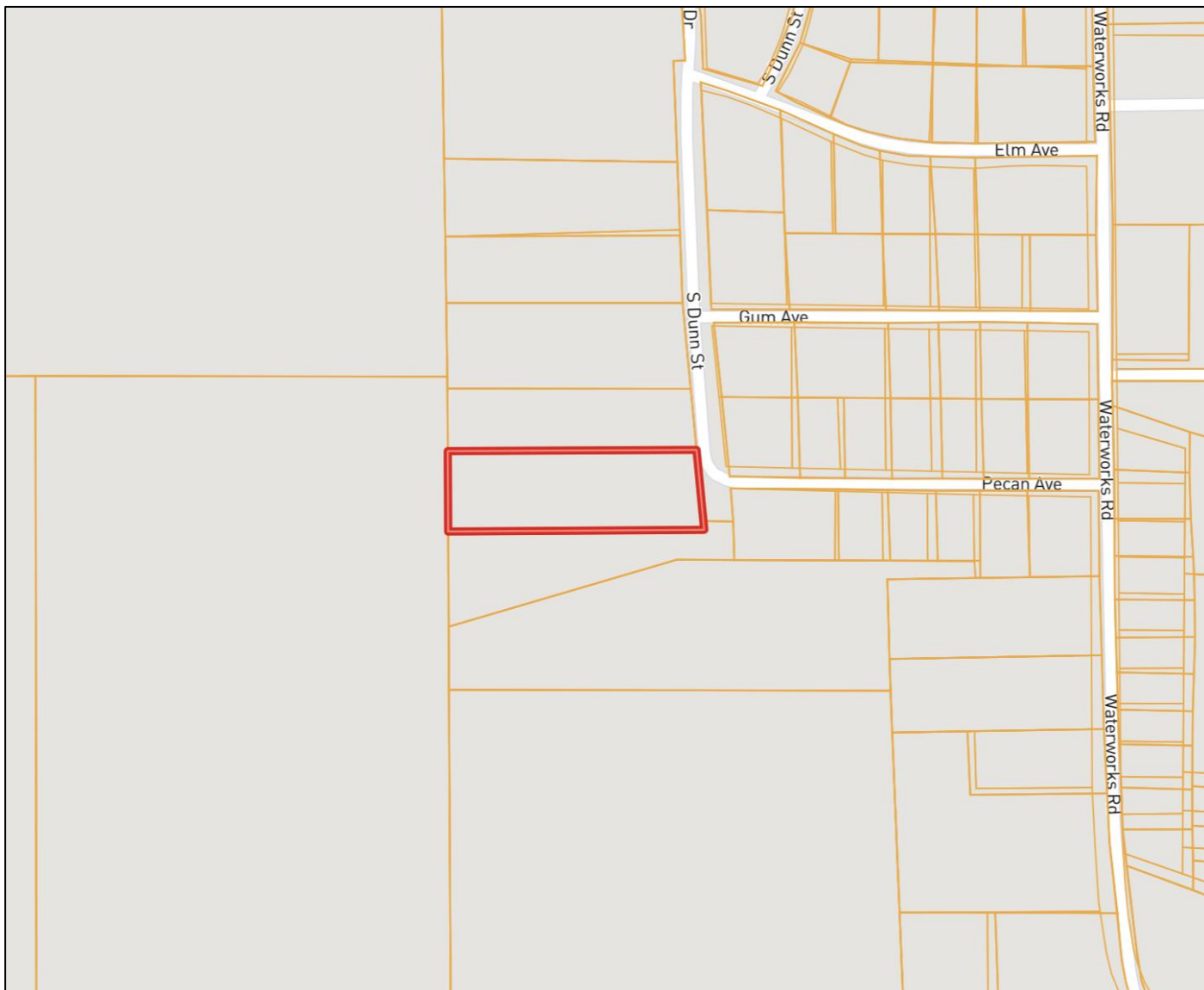
WALKER TRANUM, REALTOR®
Walker@TomSmithHomes.com
662.268.6333 **office** | 662.769.1442 **cell**



TomSmithLandandHomes.com

Information is believed to be accurate but not guaranteed.

Ownership Map



Call me today!

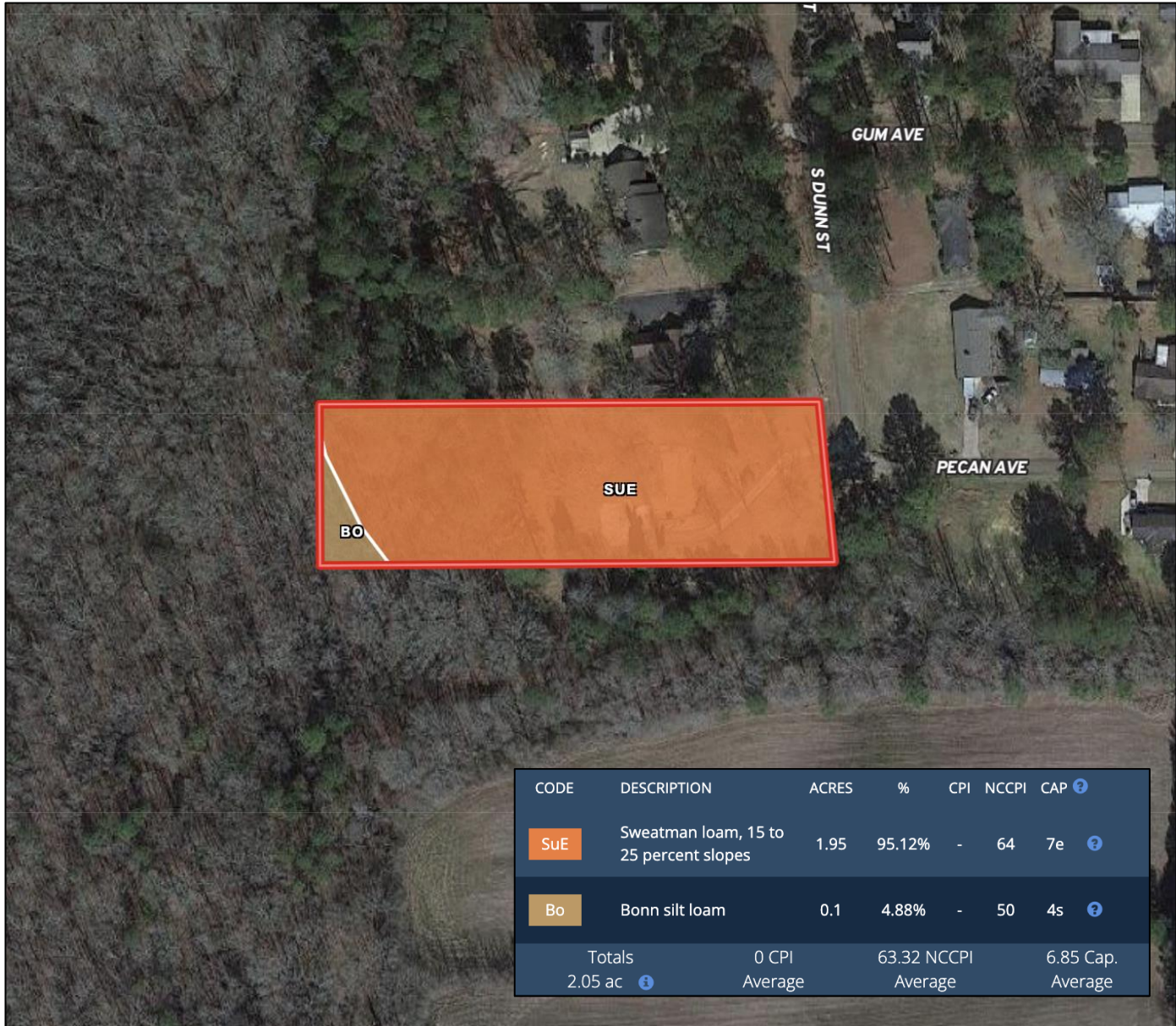
WALKER TRANUM, REALTOR®
Walker@TomSmithHomes.com
662.268.6333 **office** | 662.769.1442 **cell**



TomSmithLandandHomes.com

Information is believed to be accurate but not guaranteed.

Soil Map and Soil Description



Call me today!

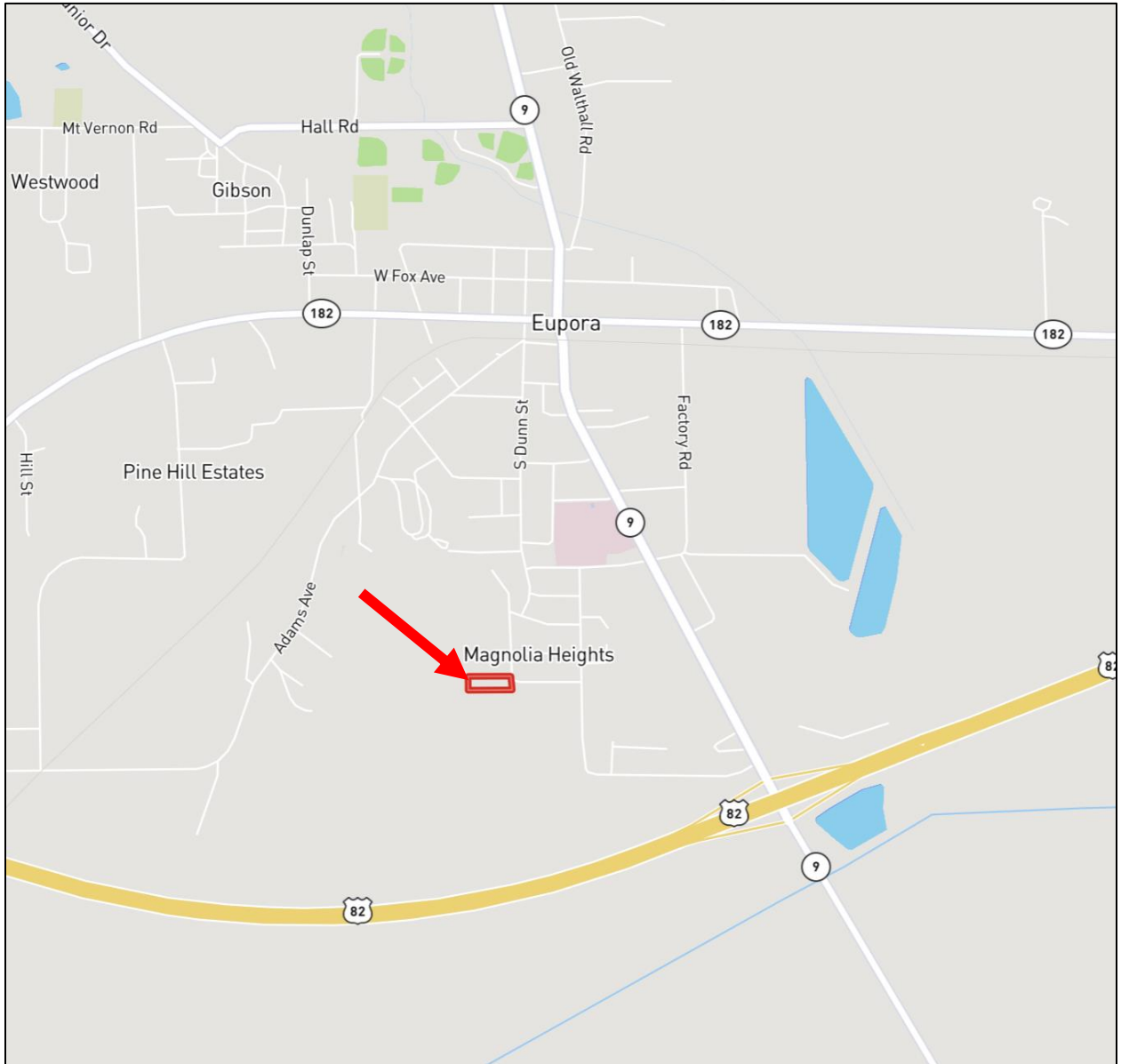
WALKER TRANUM, REALTOR®
Walker@TomSmithHomes.com
662.268.6333 office | 662.769.1442 cell



TomSmithLandandHomes.com

Information is believed to be accurate but not guaranteed.

Directional Map



Directions from Intersection of Hwy 82 and Hwy 9 in Eupora: Travel Southwest on Waterworks Road for 0.6 miles. Turn left onto Pecan Avenue and travel 0.2 miles. The property will be on your left.

[GOOGLE MAP LINK](#)

Call me today!

WALKER TRANUM, REALTOR®
Walker@TomSmithHomes.com
662.268.6333 **office** | 662.769.1442 **cell**



TomSmithLandandHomes.com

Information is believed to be accurate but not guaranteed.

