

RECREATIONAL TRACT

14± Acres in Copiah County, MS



\$70,000

This tranquil recreational property in Copiah County, Mississippi, is on a quiet road with minimal traffic, making it an ideal escape for those seeking a retreat. With 14± acres of space, you can customize it to your liking. It's a perfect spot for setting up a camp and creating food plots for hunting deer enthusiasts. The property has access to utilities, including electricity from Southern Pine and community water from the Copiah Water Association, readily available at the roadside. You'll find this property conveniently located on Williamson Road in Wesson. Call Mike today to schedule your viewing!



**MIKE
ODOM**
REALTOR®

Office: 601.898.2772

Cell: 601.927.5018

MikeOdom@TomSmithLand.com



A Real Estate Expert You Can Trust

TomSmithLandandHomes.com

Information is believed to be accurate but not guaranteed.





MIKE ODOM
REALTOR®

Office: 601.898.2772

Cell: 601.927.5018

MikeOdom@TomSmithLand.com

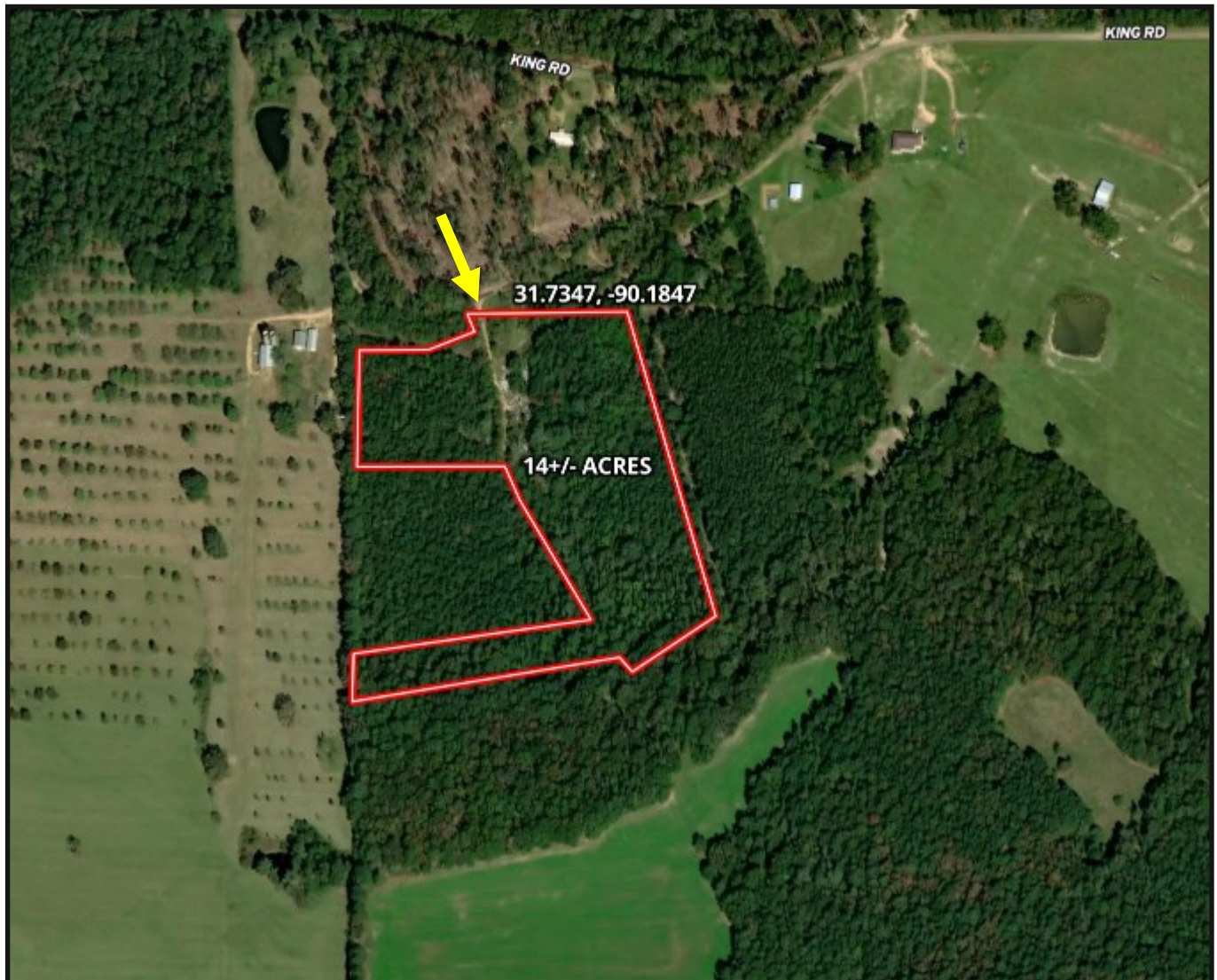


A Real Estate Expert You Can Trust
TomSmithLandandHomes.com

Information is believed to be accurate but not guaranteed.



Aerial Map



[Click for Interactive Map](#)

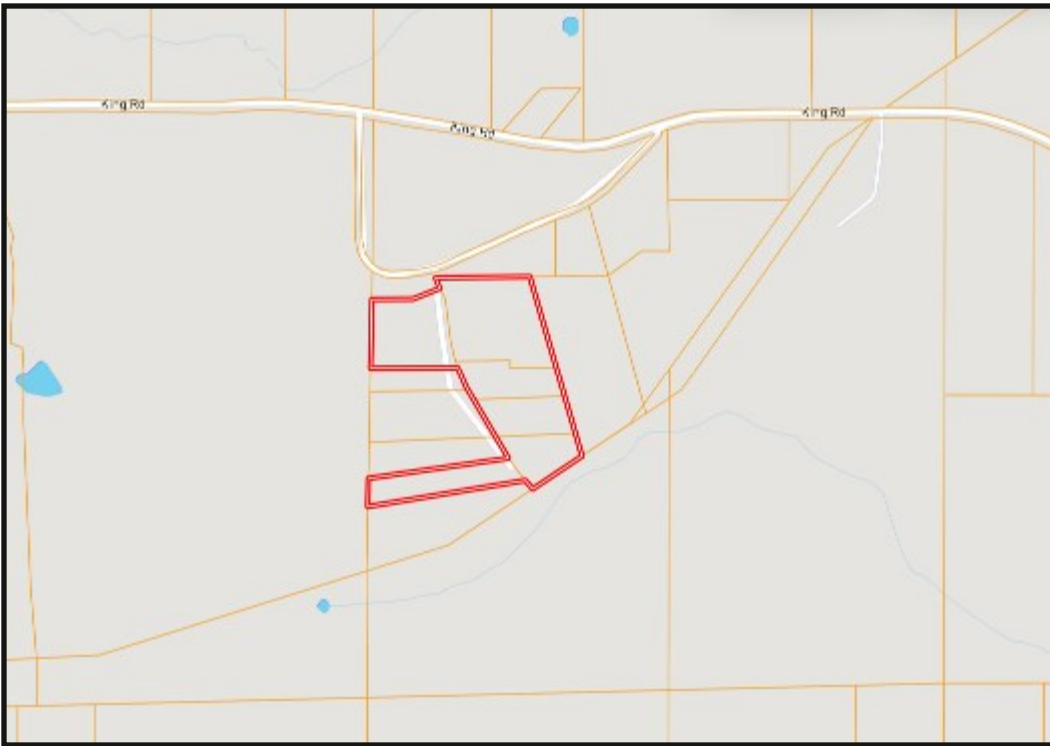
MIKE ODOM
REALTOR®
Office: 601.898.2772
Cell: 601.927.5018
MikeOdom@TomSmithLand.com



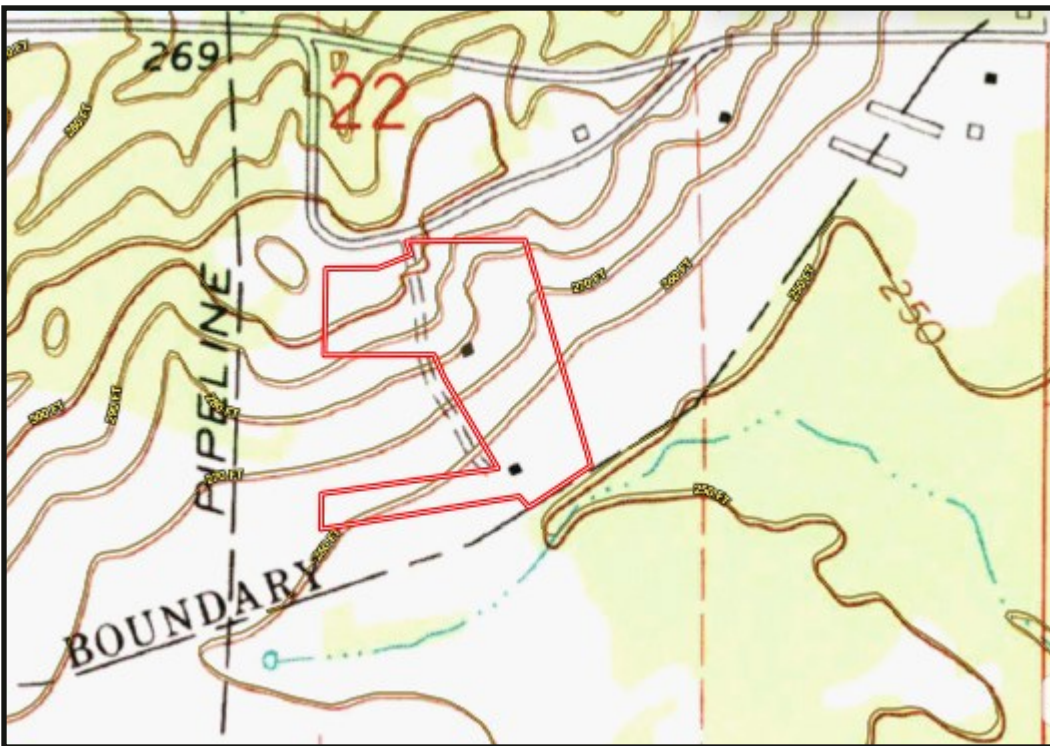
A Real Estate Expert You Can Trust
TomSmithLandandHomes.com

Information is believed to be accurate but not guaranteed.





**Ownership
Map**



**Topo
Map**

MIKE ODOM
REALTOR®
Office: 601.898.2772
Cell: 601.927.5018
MikeOdom@TomSmithLand.com

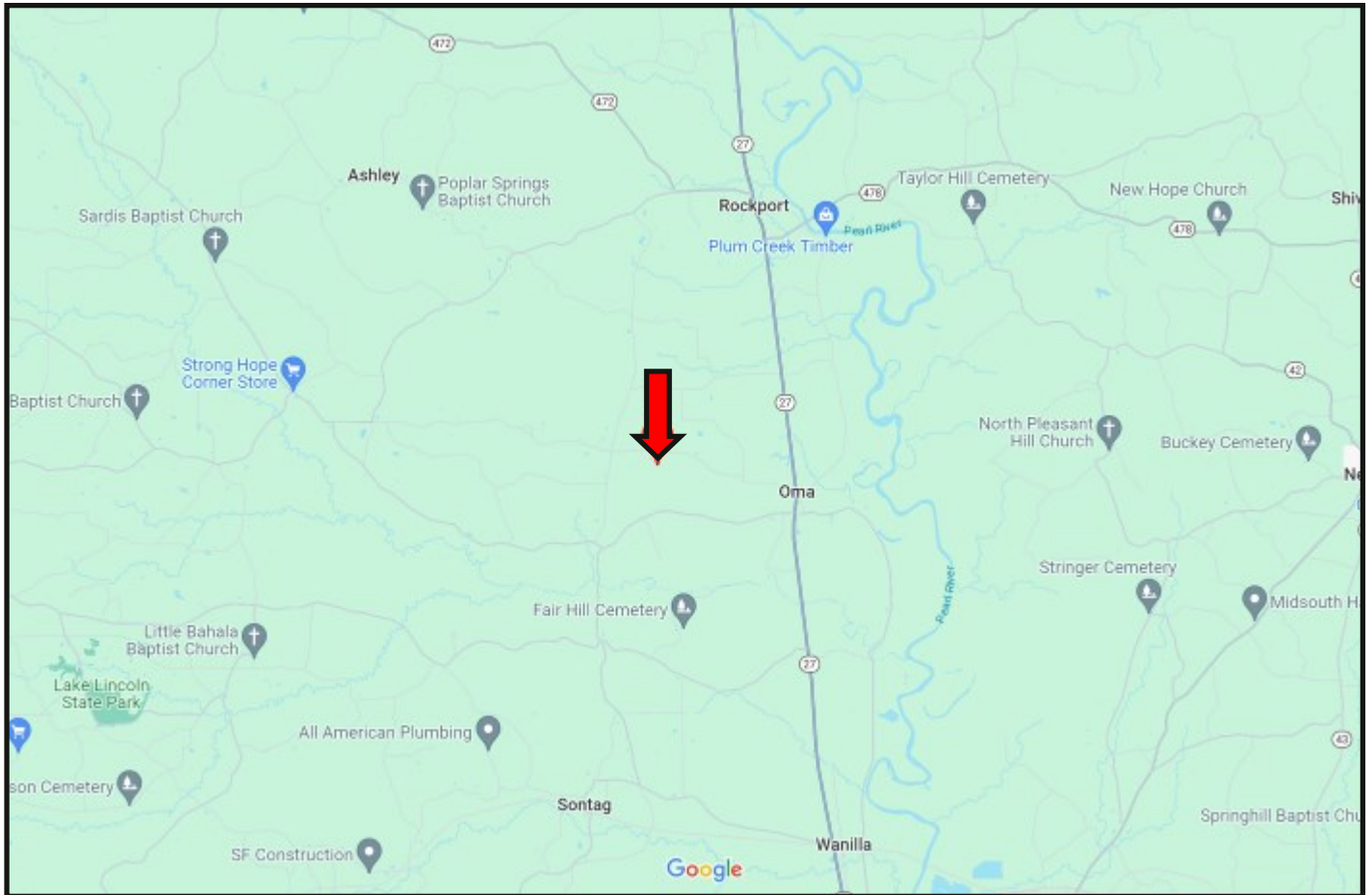


A Real Estate Expert You Can Trust
TomSmithLandandHomes.com

Information is believed to be accurate but not guaranteed.



Directional Map



Directions from the intersection of Sylvarena Road and Hwy 51 in Wesson, MS: Travel north for 1 mile, then turn right on Bahalia Road. Travel .4 miles, then turn left on Beauregard Road. Travel for 7.2 miles and turn right onto Monticello Road. Travel 6.3 miles, then turn right on Williamson Road. After .2 miles, the property will be on the right. Address: 1048 Williamson Road Wesson, MS 39191 [GOOGLE MAP LINK](#)



**MIKE
ODOM**
REALTOR®

Office: 601.898.2772

Cell: 601.927.5018

MikeOdom@TomSmithLand.com



A Real Estate Expert You Can Trust

TomSmithLandandHomes.com

Information is believed to be accurate but not guaranteed.

