

2.02+/- Acre Home Site Concordia Parish, LA



\$40,000

Look at this 2.02+/--acre residential lot in Concordia Parish, Louisiana! This lot is already cleared and waiting for your dream home to be built! The lot can be divided and sold as 1.01+/--acre lots. The lot size is 316x280. Covenants do apply, and there is a 1,500 sq ft minimum to build. Public water and sewer are available. This property is located on Southwind Drive in Vidalia. Call Tara today to schedule a viewing!

Directions from the intersection of US-425 and Magnolia St in Vidalia, LA: Travel south on Magnolia Rd for 0.1 mile. Continue onto LA-131/ Martin Luther King Ave. In 3.8 miles, turn right onto D A Biglane Rd. In 1.5 miles, turn right onto Centennial Rd. In .2 miles, turn left onto Southwind Dr. In .2 miles the property will be on the left.



Call me today!

TARA WALKER SMITH, REALTOR®
Tara@TomSmithHomes.com
601.990.5070 office | 601.407.4315 cell



TomSmithLandandHomes.com

Information is believed to be accurate but not guaranteed.



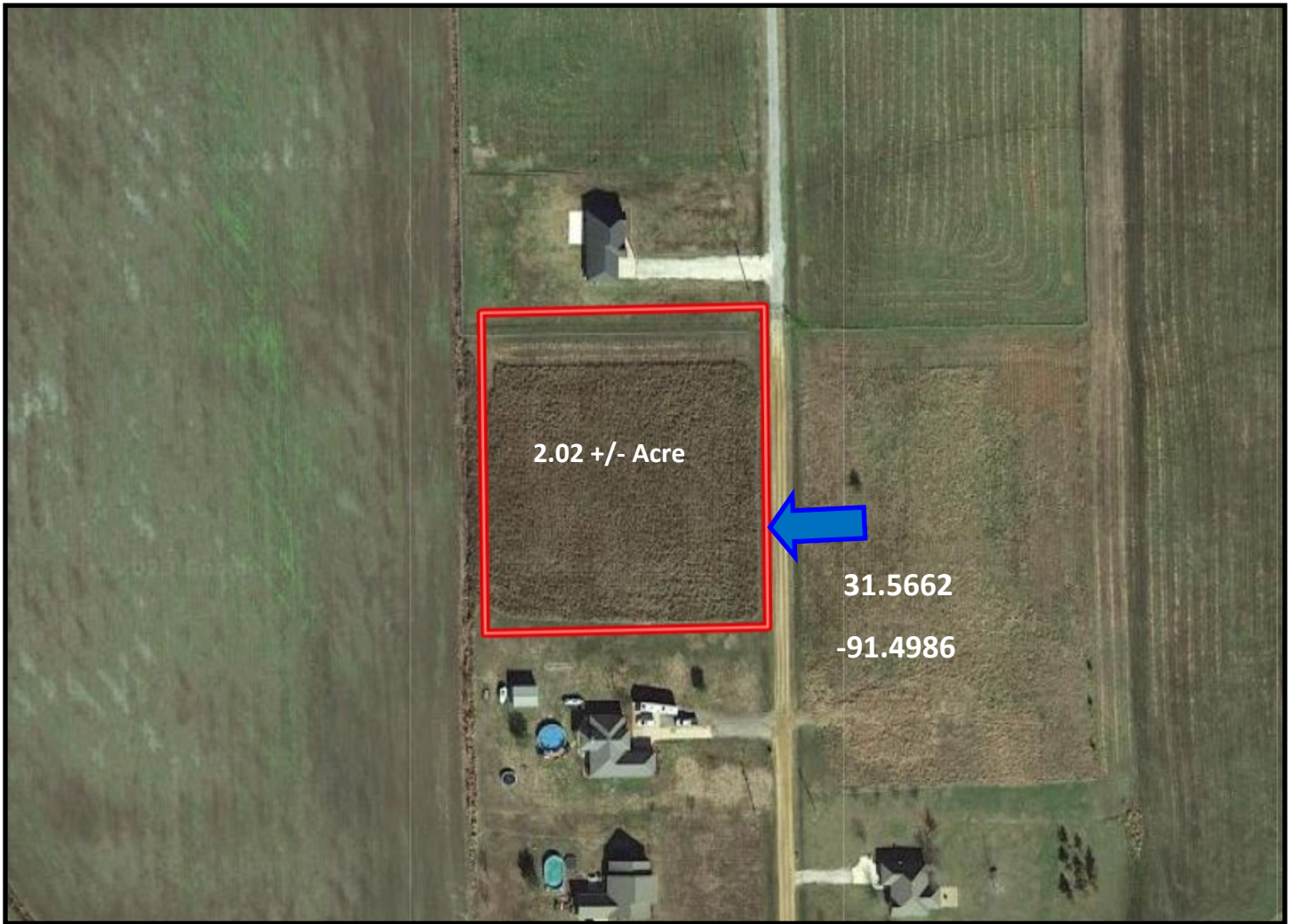
Call me today!

TARA WALKER SMITH, REALTOR®
Tara@TomSmithHomes.com
601.990.5070 office | 601.407.4315 cell



TomSmithLandandHomes.com

Information is believed to be accurate but not guaranteed.



Aerial Map

[Click for Interactive Map](#)



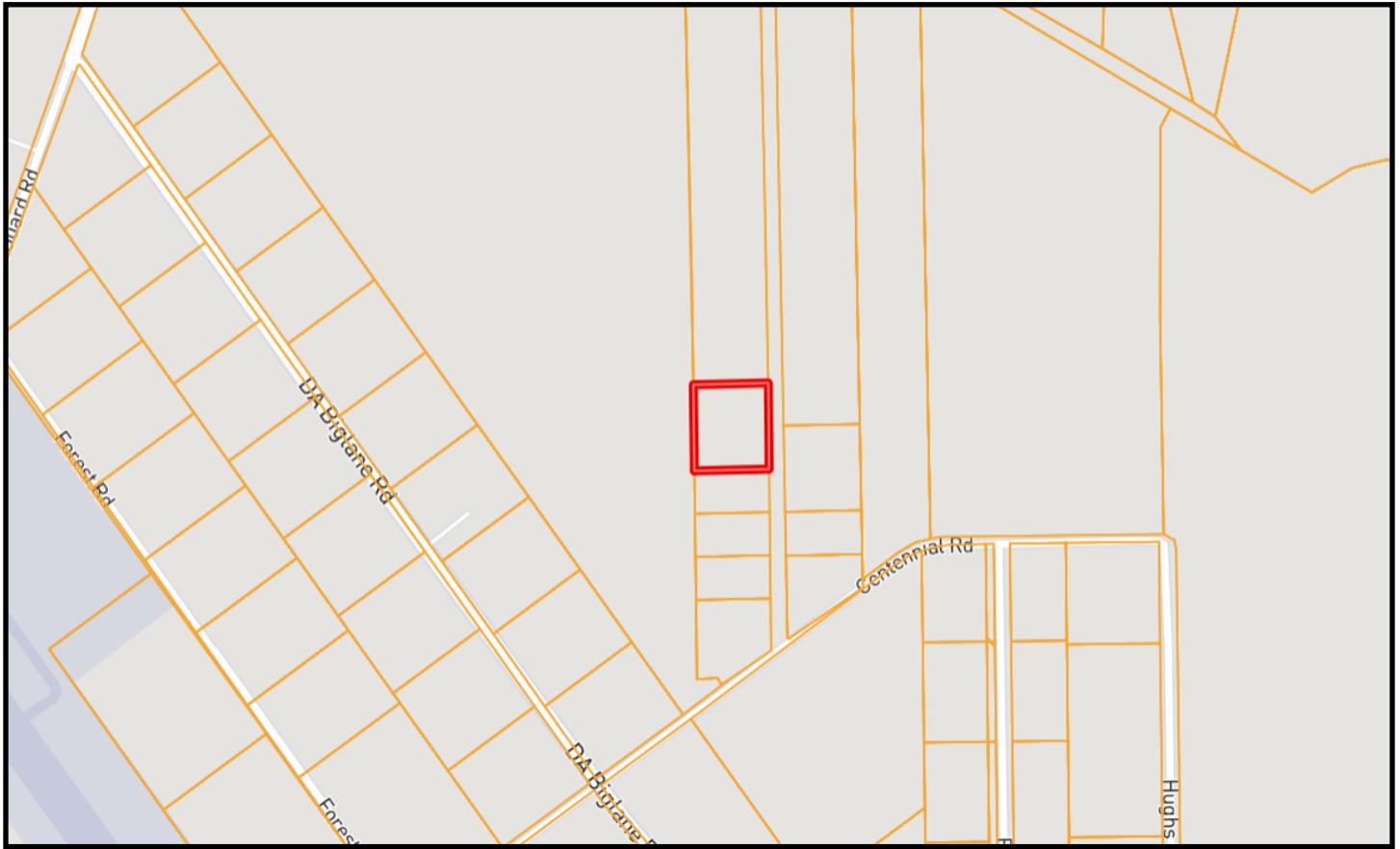
Call me today!

TARA WALKER SMITH, REALTOR®
Tara@TomSmithHomes.com
601.990.5070 office | 601.407.4315 cell



TomSmithLandandHomes.com

Information is believed to be accurate but not guaranteed.



Ownership Map



LandReport
2011-2022
AMERICA'S
BEST
BROKERAGES

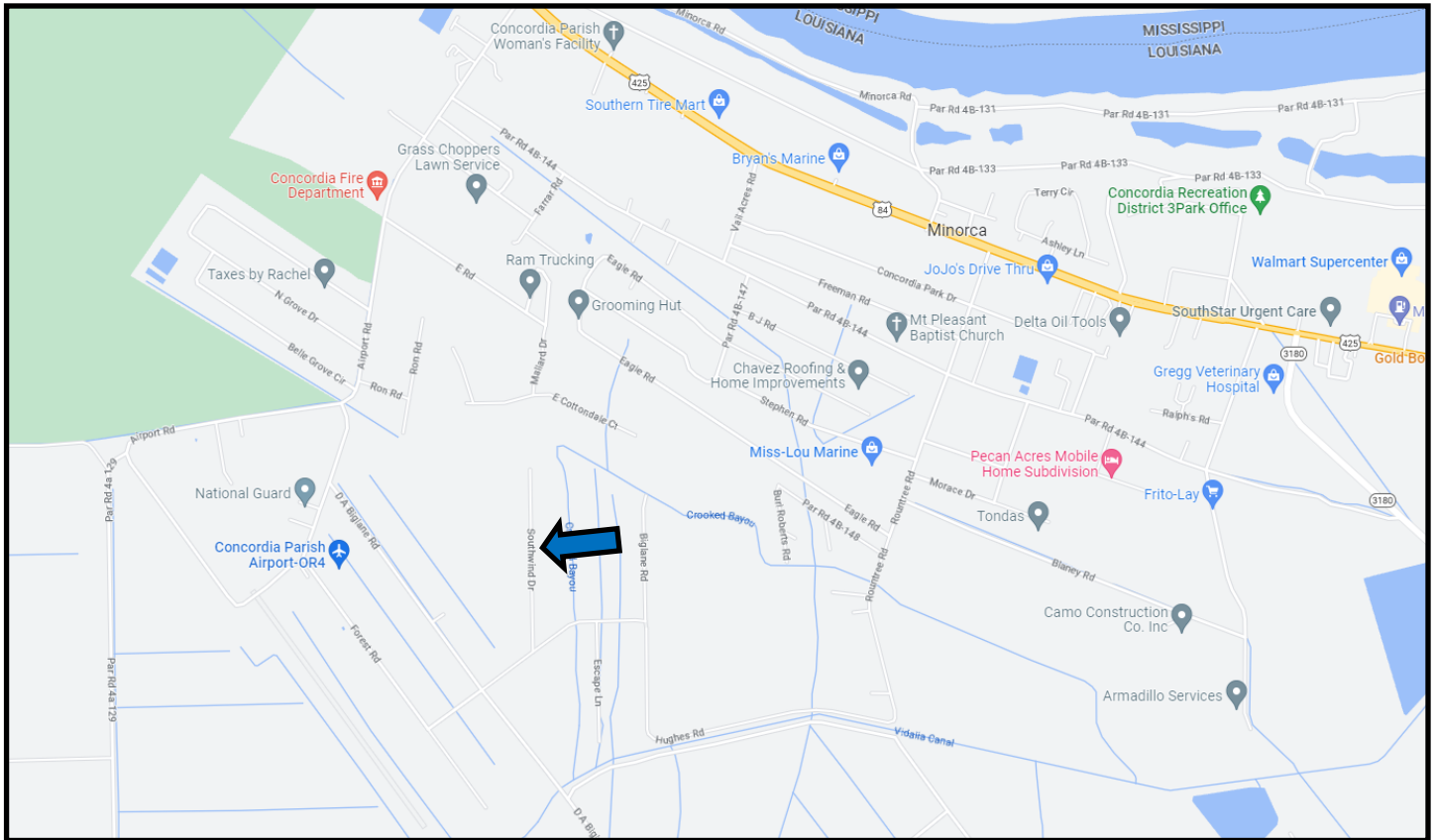
Call me today!

TARA WALKER SMITH, REALTOR®
Tara@TomSmithHomes.com
601.990.5070 **office** | 601.407.4315 **cell**



TomSmithLandandHomes.com

Information is believed to be accurate but not guaranteed.



Directional Map

Directions from the intersection of US-425 and Magnolia St in Vidalia, LA: Travel south on Magnolia Rd for 0.1 mile. Continue onto LA-131/ Martin Luther King Ave. In 3.8 miles, turn right onto D A Biglane Rd. In 1.5 miles, turn right onto Centennial Rd. In .2 miles, turn left onto Southwind Dr. In .2 miles the property will be on the left.

[Click for Google Map](#)



Call me today!

TARA WALKER SMITH, REALTOR®
 Tara@TomSmithHomes.com
 601.990.5070 office | 601.407.4315 cell



TomSmithLandandHomes.com

Information is believed to be accurate but not guaranteed.