

10+/- Acre Homesite SIMPSON COUNTY, MS



\$27,500

Check out this 10+/- surveyed acres homesite located in Simpson county, Mississippi, ideal for a personal residence. This property is a corner lot on Hawkins and Delancey Road in Harrisville, Mississippi. The property was clear-cut approximately two years ago, making it a perfect blank slate for your new home place or getaway. Electricity is available with Southern Pine EPA, and water with Harrisville Water Association. This property is located in Harrisville, Mississippi, and is only a short drive away from Jackson, Mississippi, and the surrounding area. Call Blake Sasser today to schedule your private tour.

Directions from Intersection of Hwy 469 & 540 in Harrisville, MS: Travel east on Hwy 540 toward Harrisville Braxton Rd. for 2.5 miles. Turn right onto Delancey Rd and travel for 0.3 miles. Turn right onto Hawkins Rd and continue for 0.5 miles. The entrance to the property will be on the right.

[GOOGLE MAP LINK](#)



Call me today!

BLAKE SASSER, REALTOR®
Blake@TomSmithLand.com
601.990.5070 office | 601.757.5027 cell



TomSmithLandandHomes.com

Information is believed to be accurate but not guaranteed.



Call me today!

BLAKE SASSER, REALTOR®
Blake@TomSmithLand.com
601.990.5070 office | 601.757.5027 cell



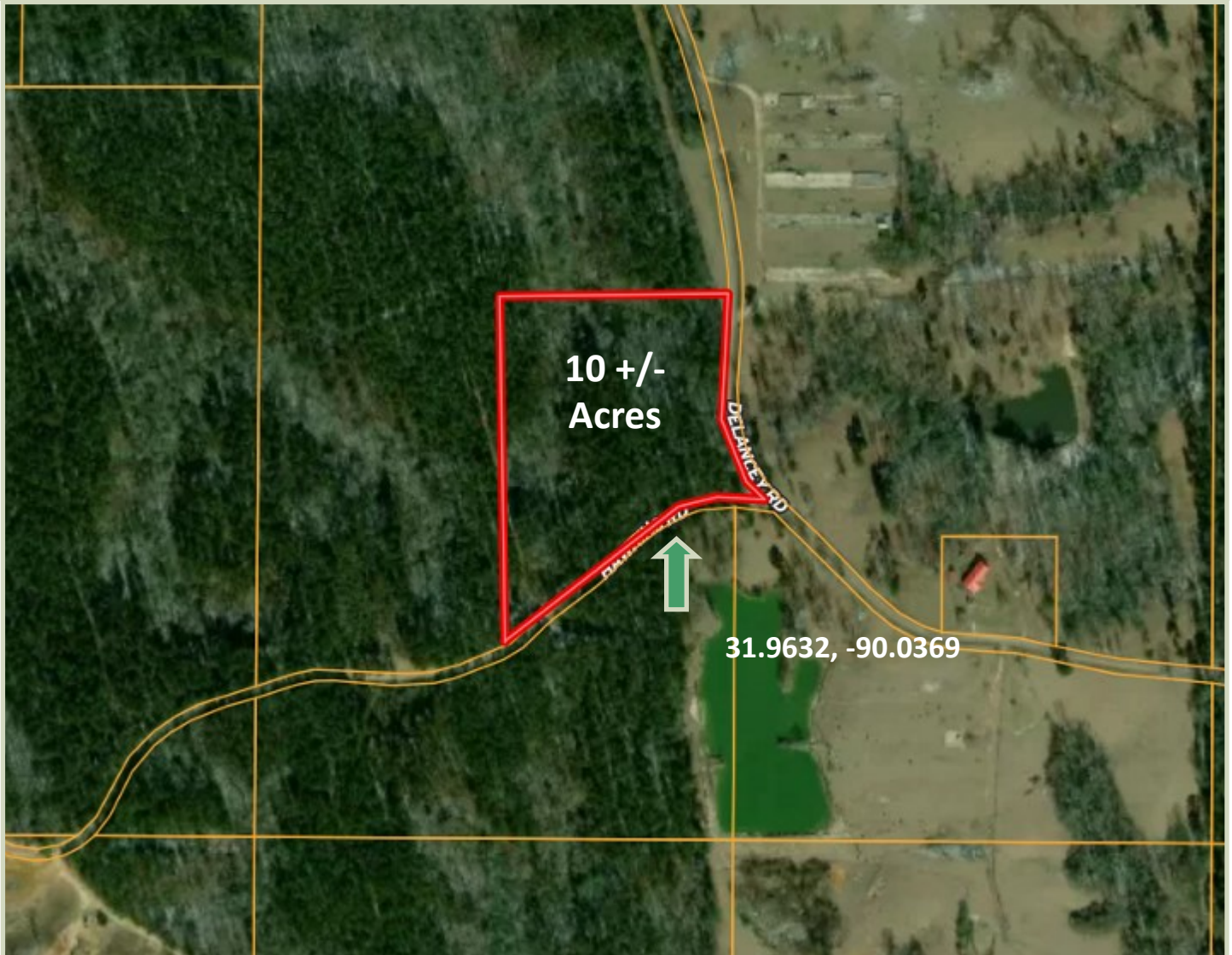
Expect More. Get More.



TomSmithLandandHomes.com

Information is believed to be accurate but not guaranteed.

Aerial Map



[CLICK HERE FOR AN INTERACTIVE MAP.](#)

Call me today!

BLAKE SASSER, REALTOR®
Blake@TomSmithLand.com
601.990.5070 office | 601.757.5027 cell



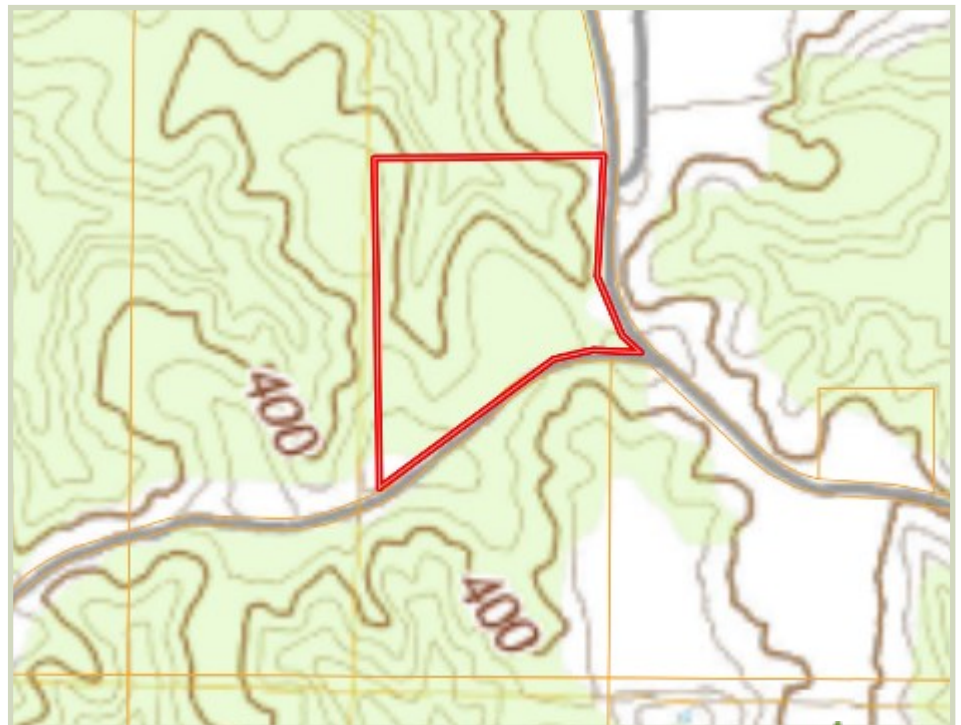
TomSmithLandandHomes.com

Information is believed to be accurate but not guaranteed.



Ownership
Map

Topo
Map



Call me today!

BLAKE SASSER, REALTOR®
Blake@TomSmithLand.com
601.990.5070 office | 601.757.5027 cell



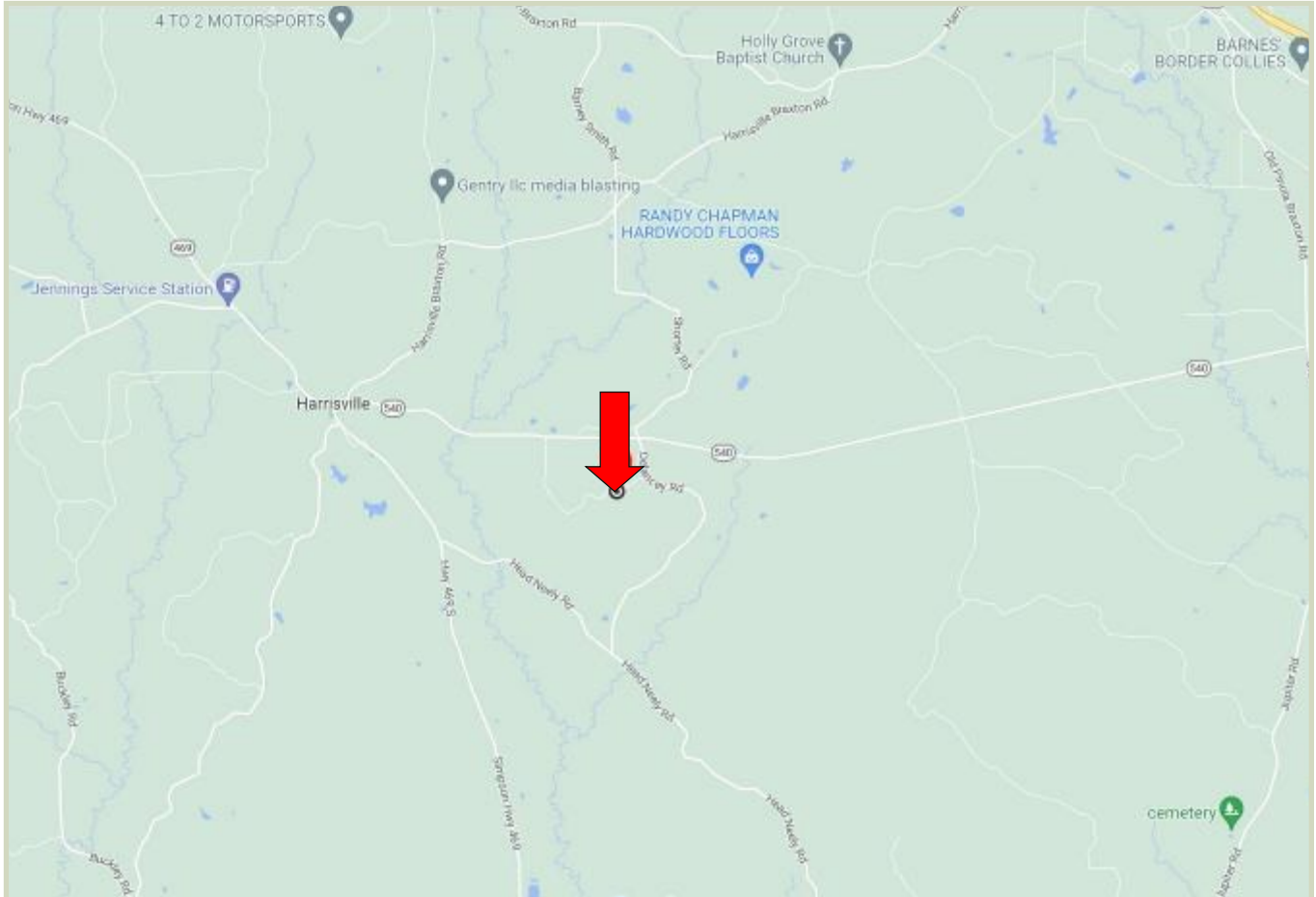
Expect More. Get More.



TomSmithLandandHomes.com

Information is believed to be accurate but not guaranteed.

Directional Map



Directions from Intersection of Hwy 469 & 540 in Harrisville, MS: Travel east on Hwy 540 toward Harrisville Braxton Rd. for 2.5 miles. Turn right onto Delancey Rd and travel for 0.3 miles. Turn right onto Hawkins Rd and continue for 0.5 miles. The entrance to the property will be on the right. [GOOGLE MAP LINK](#)



Call me today!

BLAKE SASSER, REALTOR®
Blake@TomSmithLand.com
601.990.5070 office | 601.757.5027 cell



TomSmithLandandHomes.com

Information is believed to be accurate but not guaranteed.