

# 9.74± Acre Homesite in Rankin County, MS



**\$99,911**

Have you been looking for a new country living homesite? Look no further than this 9.74± acre tract in Rankin County, MS. Enjoy the luxury of being away from the city noise with a gravel driveway back to your secluded dream home! Being just under 15 minutes south of Brandon, MS, the property features an outer boundary of hardwoods with a center section of pines. A small creek runs from the northern to the southern boundary on the east side of the property, providing an exceptional water supply for the local wildlife. There is approximately 670± ft. of paved road frontage, electricity provided through southern pine EPA, and water through Thomasville water ASSN. Call Kadero Edley today to schedule your private viewing!

*Call me today!*

**KADERO EDLEY**, REALTOR®  
Kadero@TomSmithLand.com  
601.898.2772 office | 601.488.7000 cell



**TomSmithLandandHomes.com**

Information is believed to be accurate but not guaranteed.



*Call me today!*

**KADERO EDLEY, REALTOR®**  
Kadero@TomSmithLand.com  
601.898.2772 office | 601.488.7000 cell

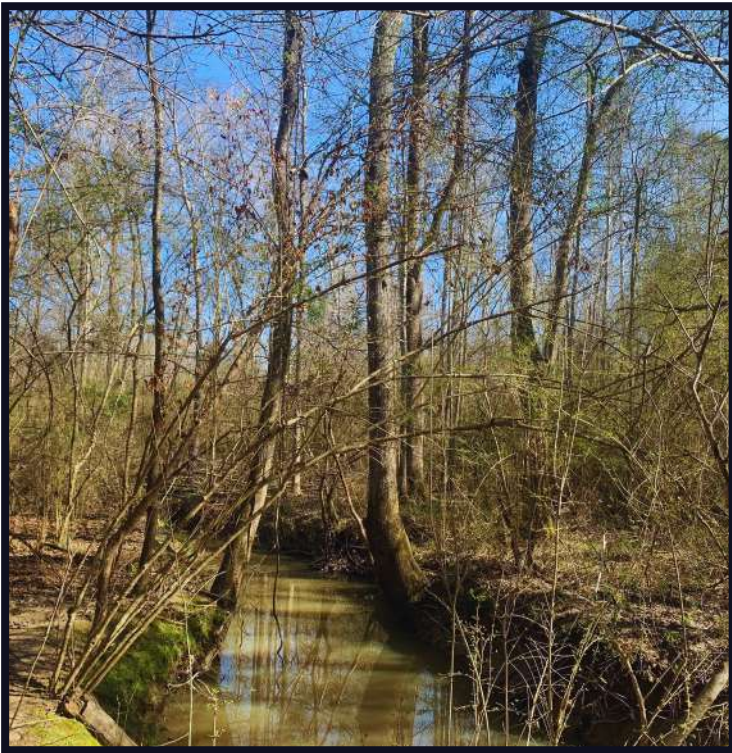
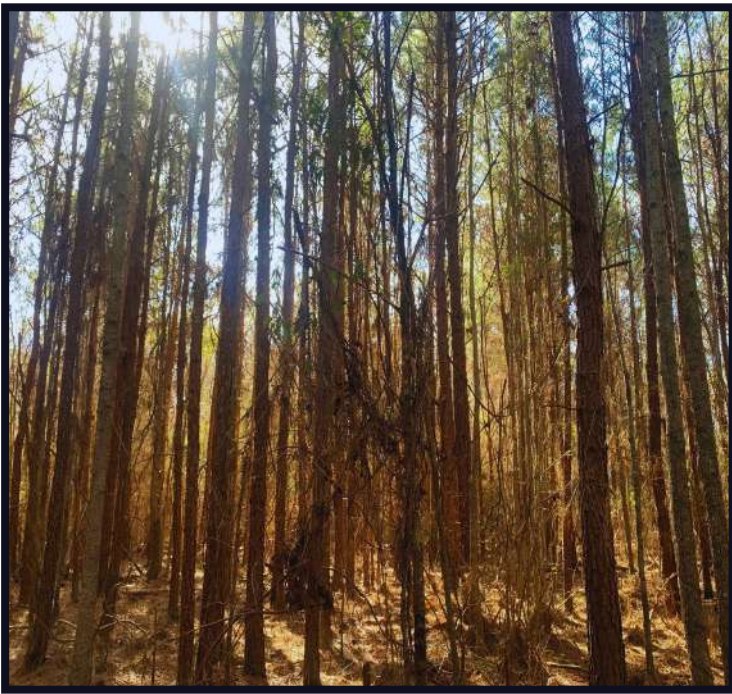


Expect More. Get More.



**TomSmithLandandHomes.com**

Information is believed to be accurate but not guaranteed.



*Call me today!*

**KADERO EDLEY, REALTOR®**  
Kadero@TomSmithLand.com  
601.898.2772 **office** | 601.488.7000 **cell**



Expect More. Get More.

**TomSmithLandandHomes.com**

Information is believed to be accurate but not guaranteed.

# Aerial Map



[Click Here for Interactive Map](#)

*Call me today!*

**KADERO EDLEY, REALTOR®**  
Kadero@TomSmithLand.com  
601.898.2772 office | 601.488.7000 cell



Expect More. Get More.



[TomSmithLandandHomes.com](http://TomSmithLandandHomes.com)

Information is believed to be accurate but not guaranteed.

# Ownership Map



*Call me  
today!*

**KADERO EDLEY**, REALTOR®  
Kadero@TomSmithLand.com  
601.898.2772 **office** | 601.488.7000 **cell**



Expect More. Get More.



**TomSmithLandandHomes.com**

Information is believed to be accurate but not guaranteed.

# Topographic Map



*Call me  
today!*

**KADERO EDLEY**, REALTOR®  
Kadero@TomSmithLand.com  
601.898.2772 **office** | 601.488.7000 **cell**

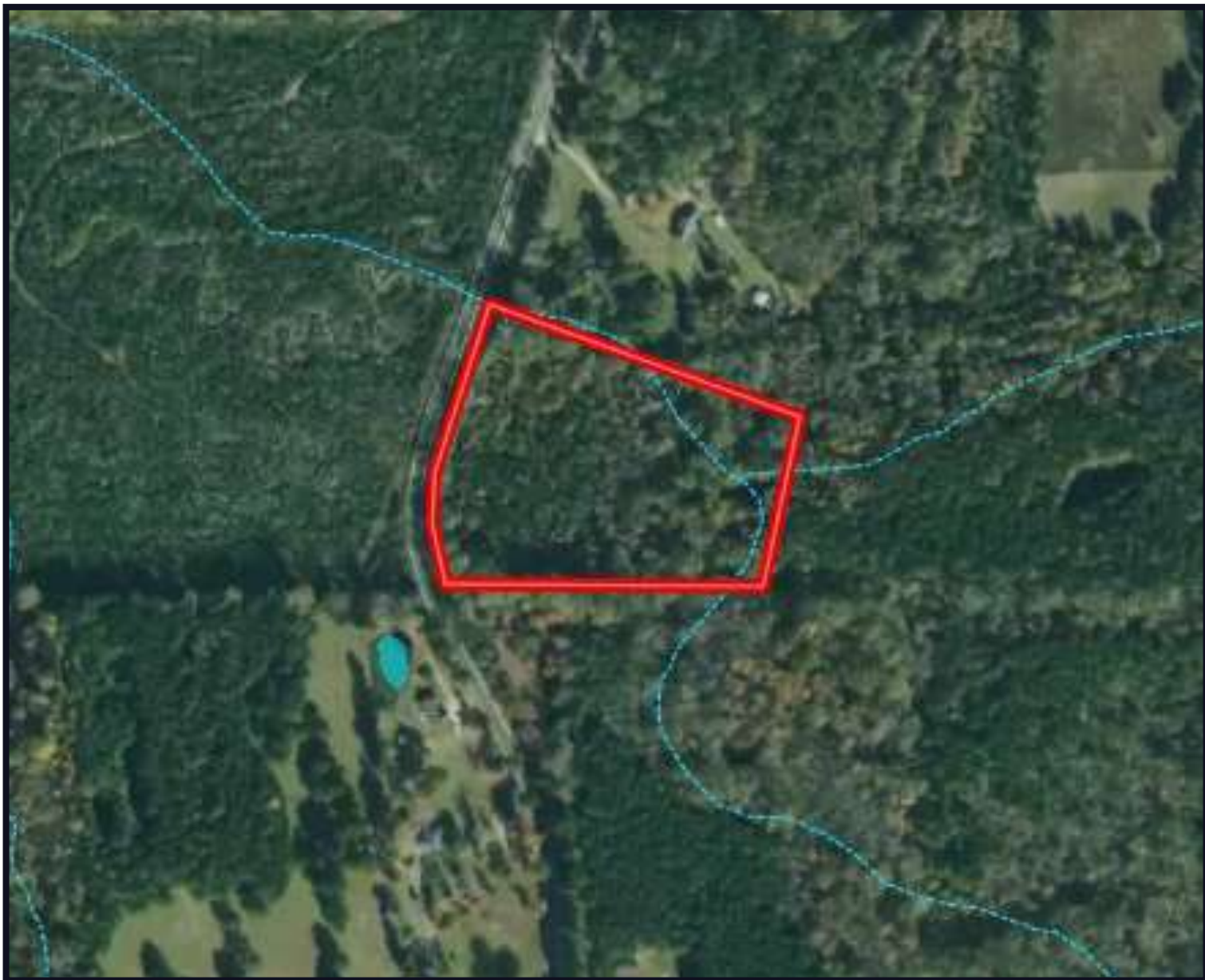


Expect More. Get More.

**TomSmithLandandHomes.com**

Information is believed to be accurate but not guaranteed.

# Water Features



*Call me  
today!*

**KADERO EDLEY**, REALTOR®  
Kadero@TomSmithLand.com  
601.898.2772 **office** | 601.488.7000 **cell**



Expect More. Get More.

**TomSmithLandandHomes.com**

Information is believed to be accurate but not guaranteed.

# Floodplain



*Call me  
today!*

**KADERO EDLEY**, REALTOR®  
Kadero@TomSmithLand.com  
601.898.2772 **office** | 601.488.7000 **cell**



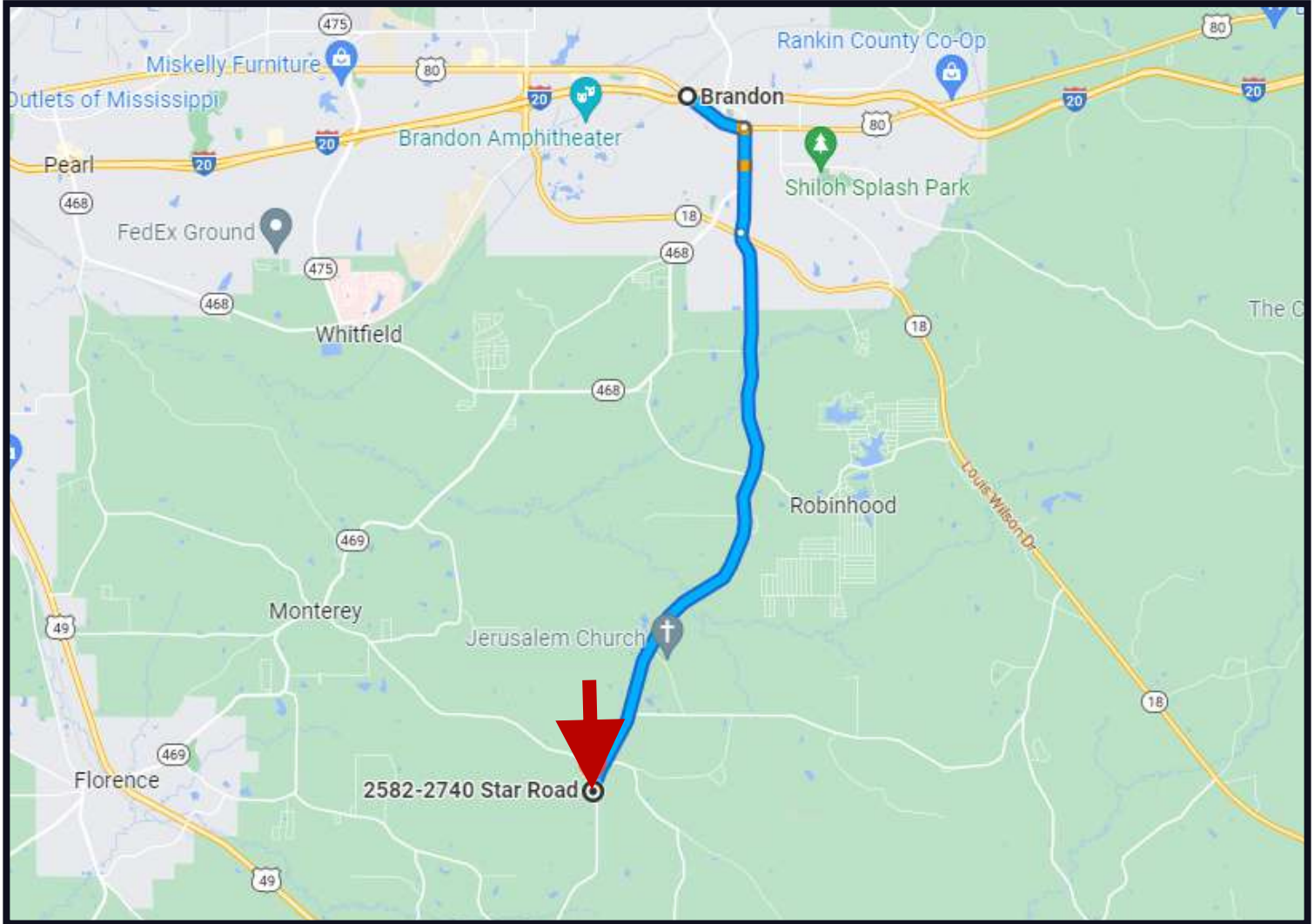
Expect More. Get More.

**TomSmithLandandHomes.com**

Information is believed to be accurate but not guaranteed.



# Directional Map



Direction from W. Government St. in Brandon, MS: Travel southeast on W. Government St. toward Lake Forest Rd. for 0.8 miles. Turn right on College St. for 1.3 miles. Continue onto Star Rd. for 7.7 miles and the property will be on your left.

[Google Maps Link](#)



*Call me today!*

**KADERO EDLEY, REALTOR®**  
Kadero@TomSmithLand.com  
601.898.2772 office | 601.488.7000 cell



[TomSmithLandandHomes.com](http://TomSmithLandandHomes.com)

Information is believed to be accurate but not guaranteed.