



TURNKEY HUNTING CAMP

ON 34.5± ACRES IN JEFFERSON DAVIS COUNTY, MS



1048 Greens Creek Rd, Carson, MS

\$165,000

Check out this turnkey property, ready to become your new hunting camp! This 34.5± acre property is located in Carson, Jefferson Davis County, MS, approximately 2.5 hours from New Orleans and Baton Rouge, LA. This tract would make an excellent hunting tract with its established trail system and food plot areas. The three bed/two bath double wide mobile home comes fully furnished, giving you a head start on hunting for next season. The property also features a small seasonal creek running through the south portion of the property. All utilities are already installed and hooked up. Call Preston Smith today for your private showing

Directions from US-84 and MS-184 in Prentiss, MS: Travel east on MS-184. In 1.3 miles, turn right onto MS-135. In 5.5 miles, turn left onto Greens Creek Rd. In 5.2 miles, the property will be on the right. Address: 1048 Greens Creek Rd, Carson, MS 39427.



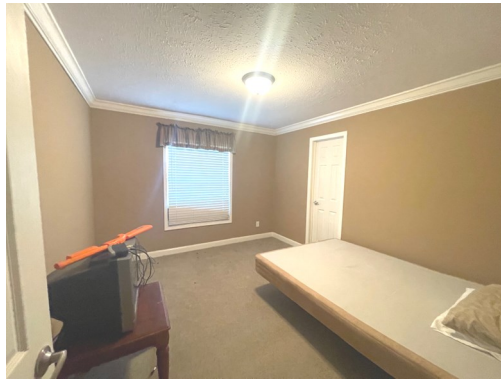
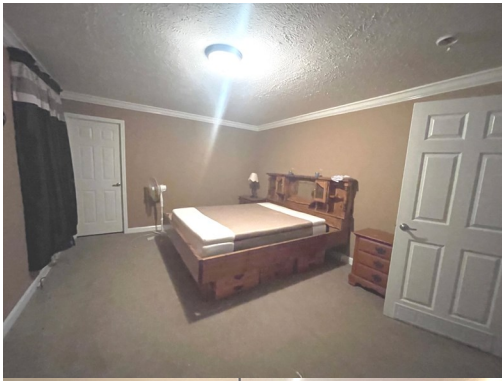
Call me today!

PRESTON SMITH, MANAGING BROKER
Preston@TomSmithLand.com
601.990.5070 **office** | 601.209.7150 **cell**



TomSmithLandandHomes.com

Information is believed to be accurate but not guaranteed.



Call me today!

PRESTON SMITH, MANAGING BROKER
Preston@TomSmithLand.com
601.990.5070 office | 601.209.7150 cell



TomSmithLandandHomes.com

Information is believed to be accurate but not guaranteed.



Call me today!

PRESTON SMITH, MANAGING BROKER
Preston@TomSmithLand.com
601.990.5070 office | 601.209.7150 cell

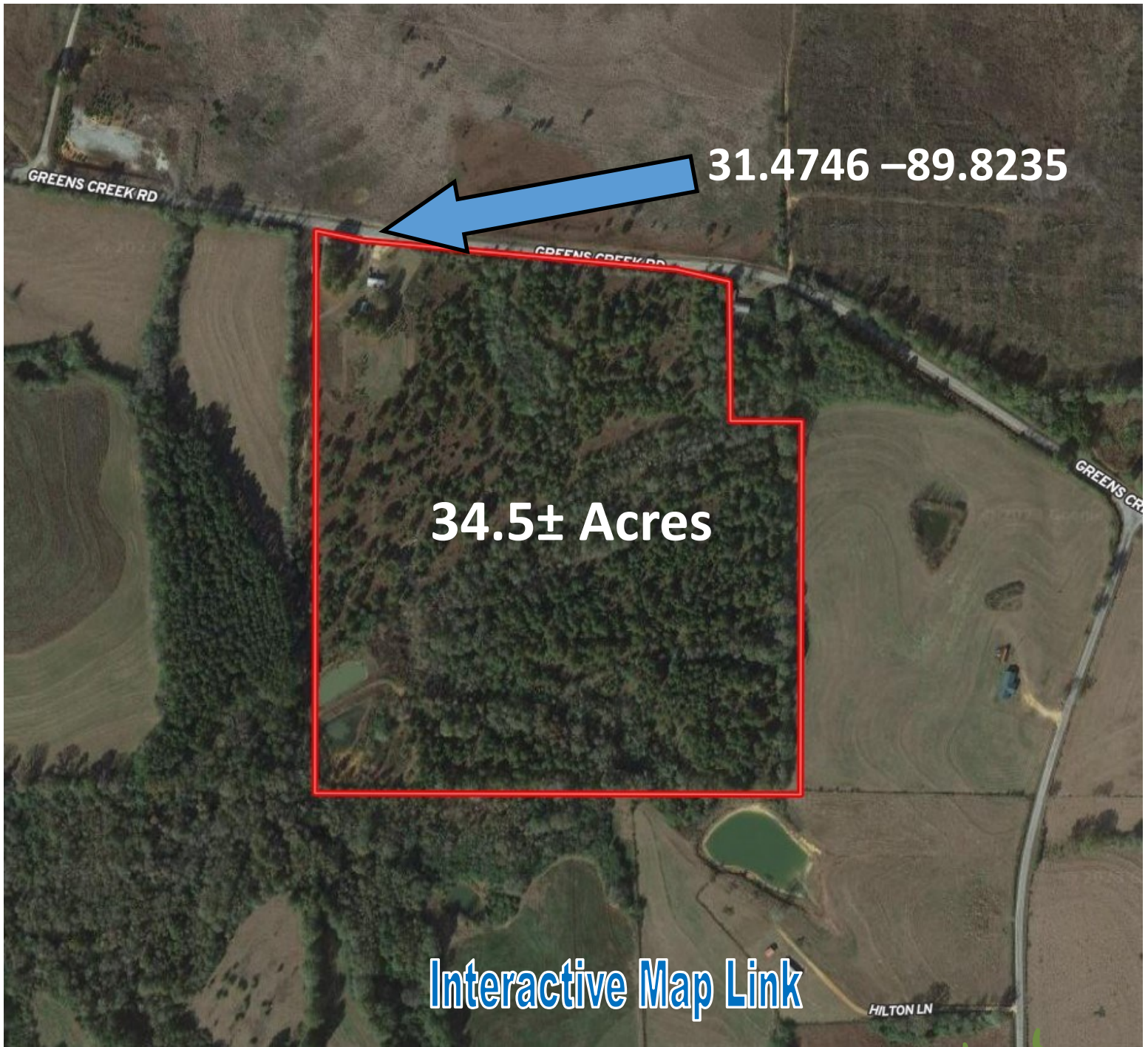


Expect More. Get More.

TomSmithLandandHomes.com

Information is believed to be accurate but not guaranteed.

Aerial Map



Call me today!

PRESTON SMITH, MANAGING BROKER
Preston@TomSmithLand.com
601.990.5070 office | 601.209.7150 cell

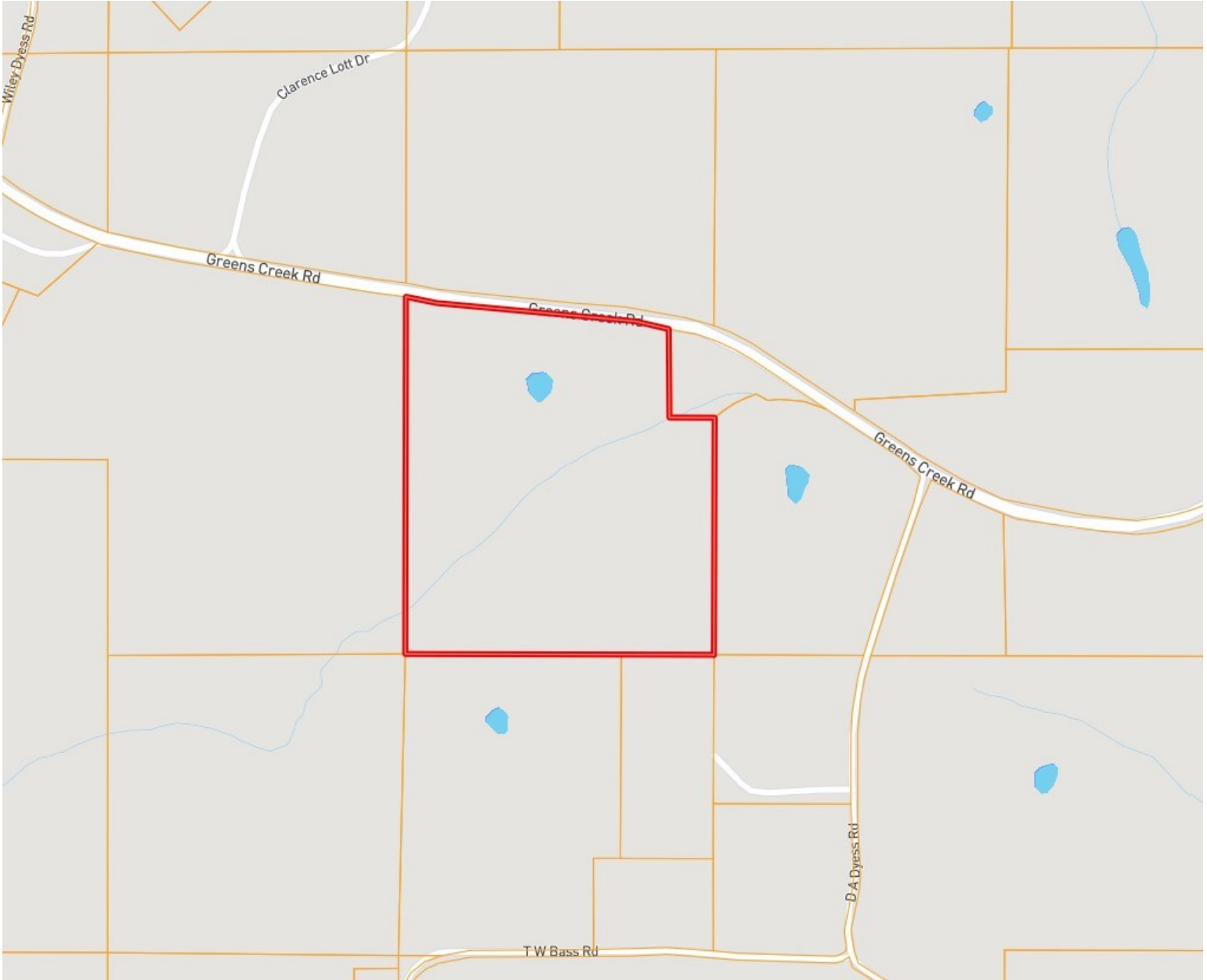


Expect More. Get More.

TomSmithLandandHomes.com

Information is believed to be accurate but not guaranteed.

Ownership Map



Call me today!

PRESTON SMITH, MANAGING BROKER
Preston@TomSmithLand.com
601.990.5070 office | 601.209.7150 cell

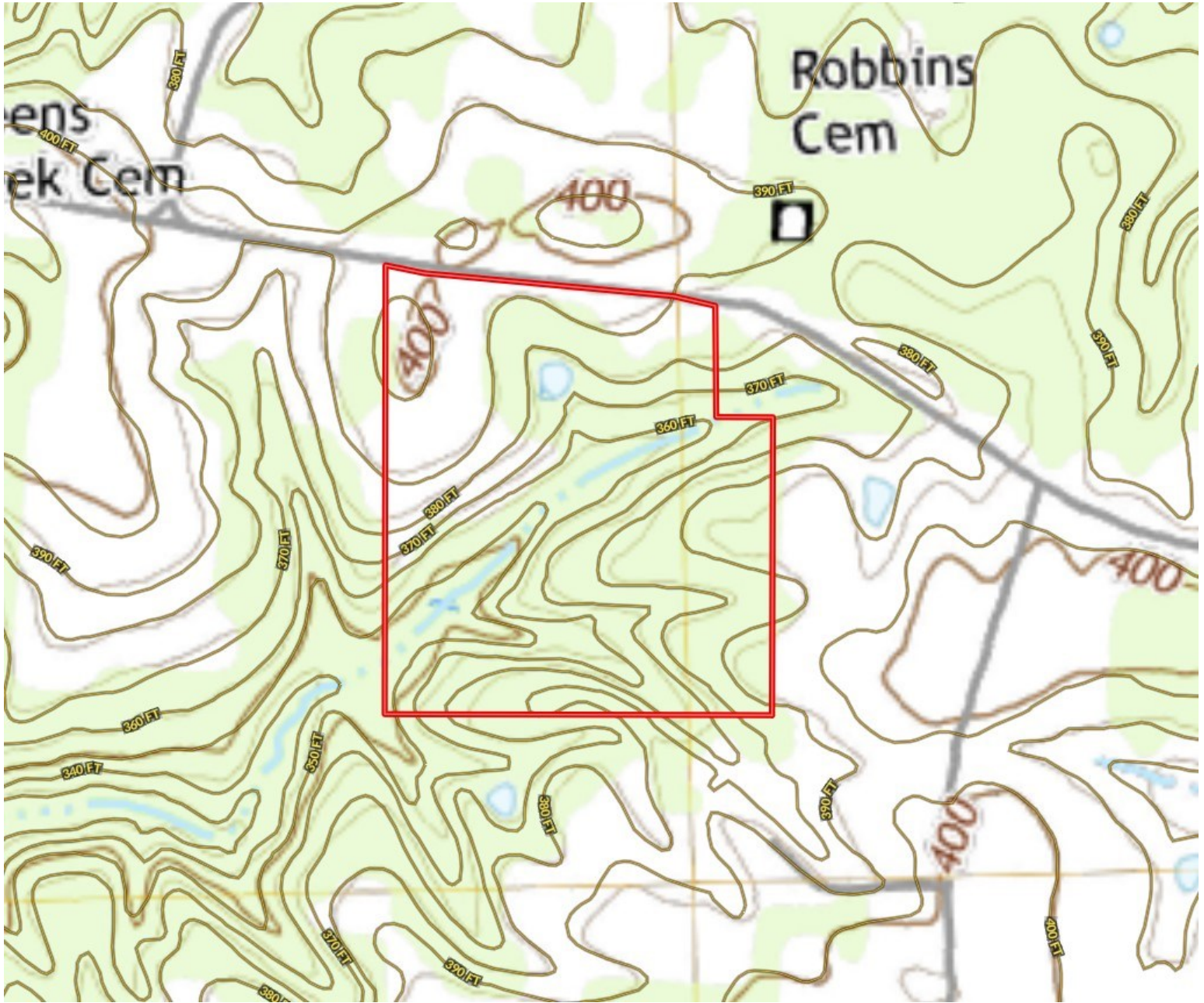


Expect More. Get More.

TomSmithLandandHomes.com

Information is believed to be accurate but not guaranteed.

Topography Map



Call me today!

PRESTON SMITH, MANAGING BROKER
Preston@TomSmithLand.com
601.990.5070 **office** | 601.209.7150 **cell**



Expect More. Get More.

TomSmithLandandHomes.com

Information is believed to be accurate but not guaranteed.

Flood Map



Call me today!

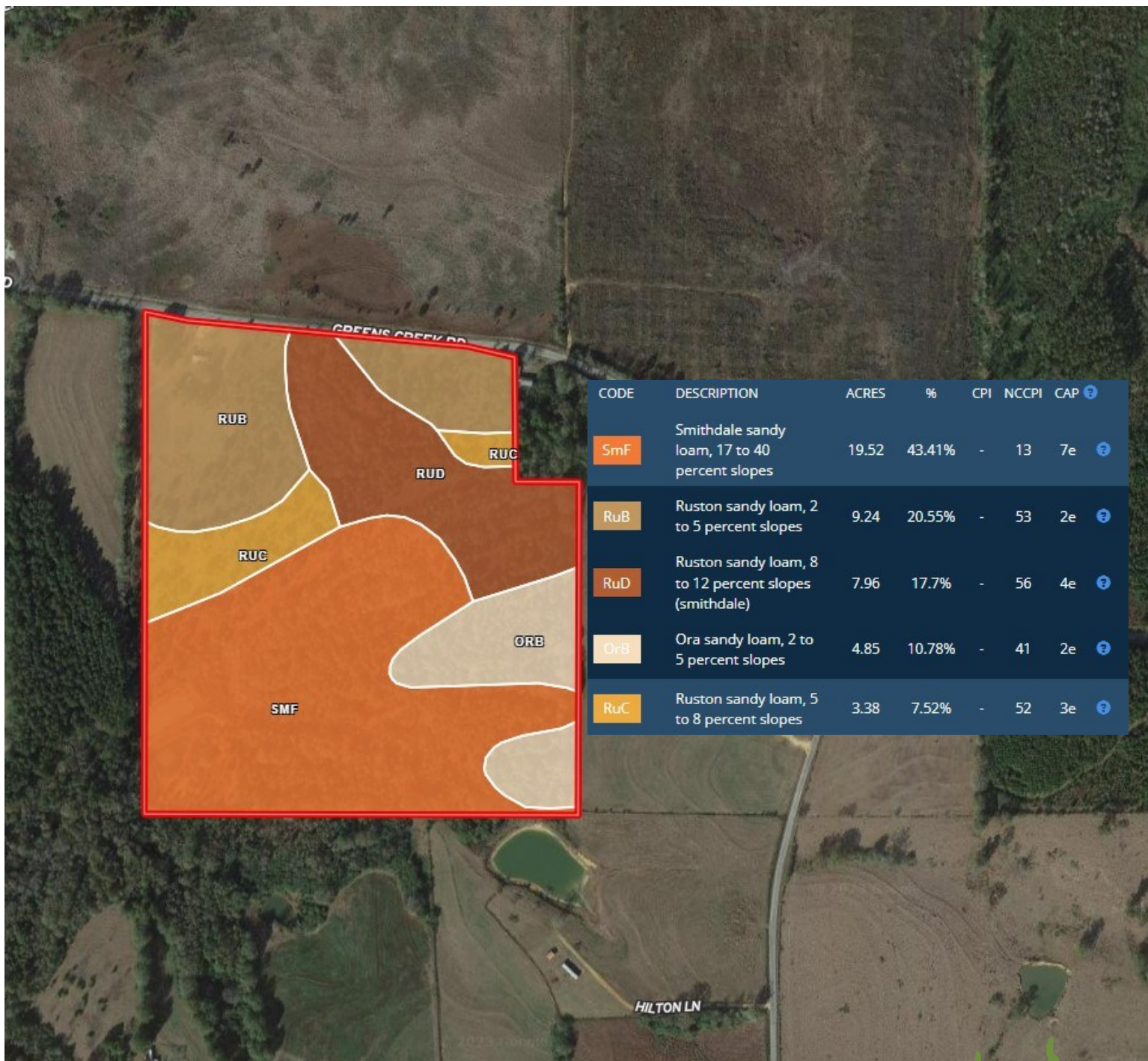
PRESTON SMITH, MANAGING BROKER
Preston@TomSmithLand.com
601.990.5070 office | 601.209.7150 cell



TomSmithLandandHomes.com

Information is believed to be accurate but not guaranteed.

Soil Map



Call me today!

PRESTON SMITH, MANAGING BROKER
 Preston@TomSmithLand.com
 601.990.5070 office | 601.209.7150 cell

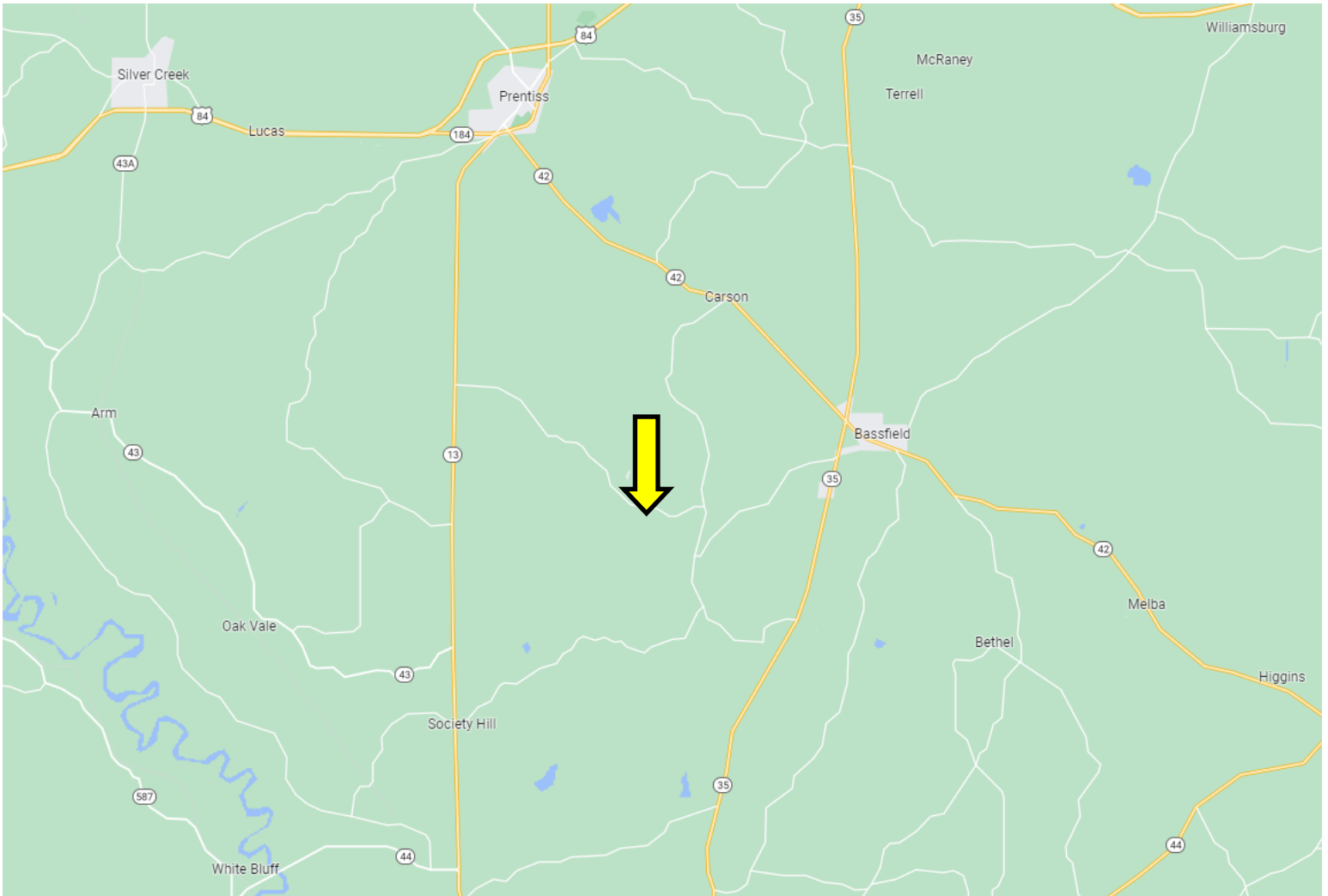


Expect More. Get More.

TomSmithLandandHomes.com

Information is believed to be accurate but not guaranteed.

Directional Map



Directions from US-84 and MS-184 in Prentiss, MS: Travel east on MS-184. In 1.3 miles, turn right onto MS-13S. In 5.5 miles, turn left onto Greens Creek Rd. In 5.2 miles, the property will be on the right. Address: 1048 Greens Creek Rd, Carson, MS 39427.

Google Map Link

Call me today!

PRESTON SMITH, MANAGING BROKER
Preston@TomSmithLand.com
601.990.5070 **office** | 601.209.7150 **cell**



Expect More. Get More.

TomSmithLandandHomes.com

Information is believed to be accurate but not guaranteed.