

6.2 +/- Acres and a Mobile Home Oktribbeha County, MS

\$158,600



Have you been searching for a new home place in Oktibbeha County, MS? Check out this 6.2+/- acre property with a mobile home. The home is 16x80 with a front porch and has a split floor plan with three bedrooms and two full bathrooms. This property is located at the end of a dead-end road in the highly sought-after Oktoc Community. This property is surrounded by mature pines and hardwoods, keeping it hidden from the road. It is also only 2 miles from Noxubee Wildlife Refuge. This property would be a perfect camp for someone looking to stay close to the hunting and fishing opportunities the Refuge offers, or it could be a nice place to stay in the country for ballgames on the weekend. To schedule, a private showing, call or text Walker!

Directions from Mississippi State University: At the roundabout take the second exit for Oktoc Road. Travel 9.2 miles turn left onto Rodeo Drive. The property will be at the end of the road. [GOOGLE MAP LINK](#)



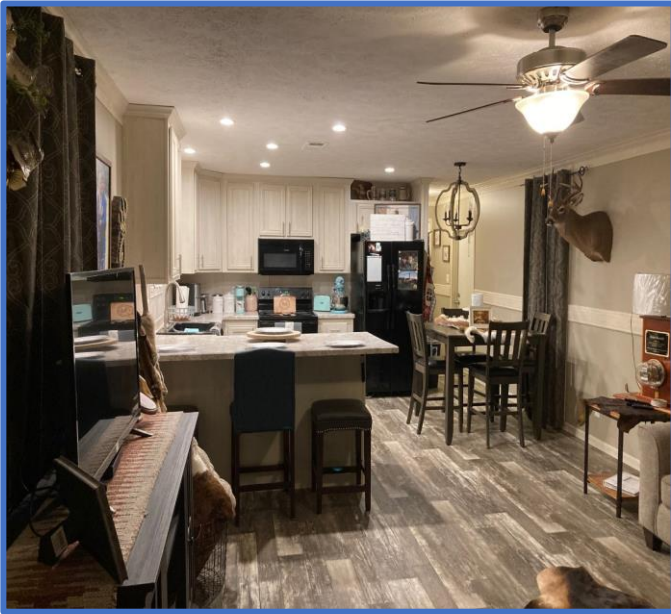
Call me today!

WALKER TRANUM, REALTOR®
Walker@TomSmithHomes.com
662.268.6333 office | 662.769.1442 cell



TomSmithLandandHomes.com

Information is believed to be accurate but not guaranteed



Call me today!

WALKER TRANUM, REALTOR®
Walker@TomSmithHomes.com
662.268.6333 office | 662.769.1442 cell



TomSmithLandandHomes.com

Information is believed to be accurate but not guaranteed.

LandReport
2011-2022
AMERICA'S
BEST
BROKERAGES



Call me today!

WALKER TRANUM, REALTOR®
Walker@TomSmithHomes.com
662.268.6333 office | 662.769.1442 cell



TomSmithLandandHomes.com

Information is believed to be accurate but not guaranteed.

LandReport
2011-2022
AMERICA'S
BEST
BROKERAGES



Call me today!

WALKER TRANUM, REALTOR®
Walker@TomSmithHomes.com
662.268.6333 office | 662.769.1442 cell



TomSmithLandandHomes.com

Information is believed to be accurate but not guaranteed.



Call me today!

WALKER TRANUM, REALTOR®
Walker@TomSmithHomes.com
662.268.6333 office | 662.769.1442 cell



LandReport
2011-2022
AMERICA'S
BEST
BROKERAGES

TomSmithLandandHomes.com

Information is believed to be accurate but not guaranteed.

Aerial Map



Click [Here](#) for Interactive Link



Call me today!

WALKER TRANUM, REALTOR®
Walker@TomSmithHomes.com
662.268.6333 office | 662.769.1442 cell



TomSmithLandandHomes.com

Information is believed to be accurate but not guaranteed.

Flood Map



Call me today!

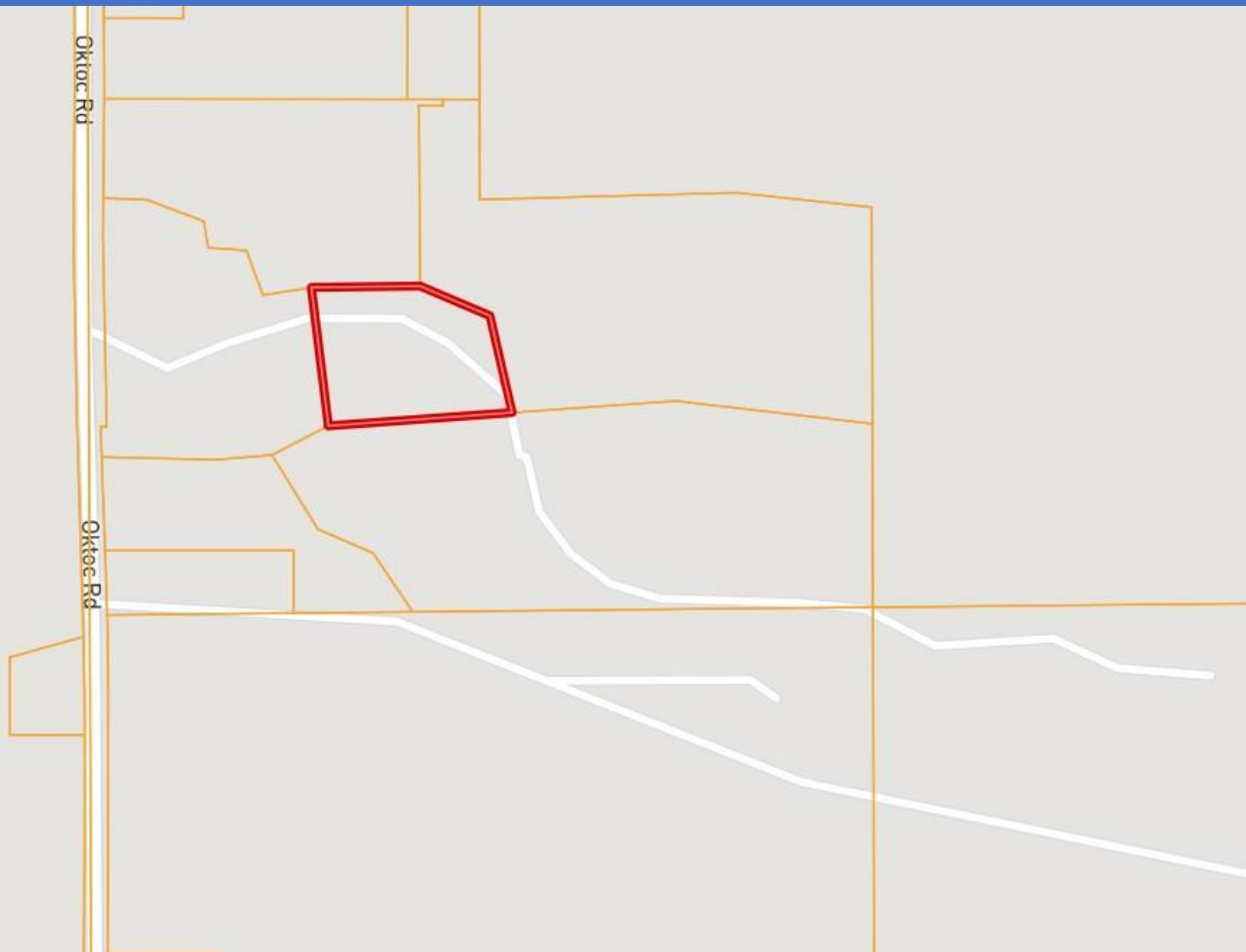
WALKER TRANUM, REALTOR®
Walker@TomSmithHomes.com
662.268.6333 office | 662.769.1442 cell



TomSmithLandandHomes.com

Information is believed to be accurate but not guaranteed.

Ownership Map



Call me today!

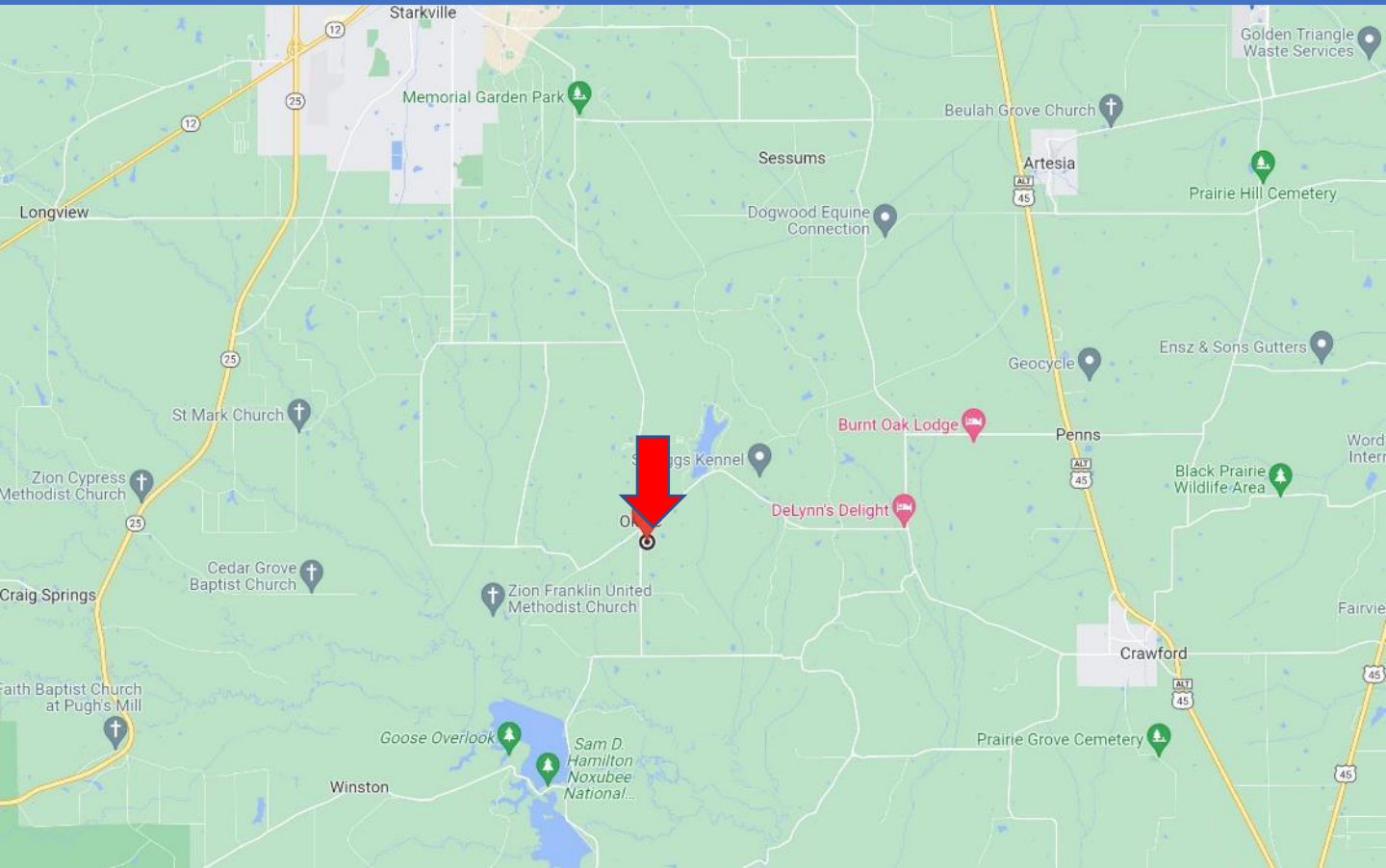
WALKER TRANUM, REALTOR®
Walker@TomSmithHomes.com
662.268.6333 office | 662.769.1442 cell



TomSmithLandandHomes.com

Information is believed to be accurate but not guaranteed.

Directional Map



Directions from Mississippi State University: At the roundabout take the second exit for Oktoc Road. Travel 9.2 miles turn left onto Rodeo Drive. The property will be at the end of the road. [GOOGLE MAP LINK](#)



Call me today!

WALKER TRANUM, REALTOR®
Walker@TomSmithHomes.com
662.268.6333 office | 662.769.1442 cell



TomSmithLandandHomes.com

Information is believed to be accurate but not guaranteed.