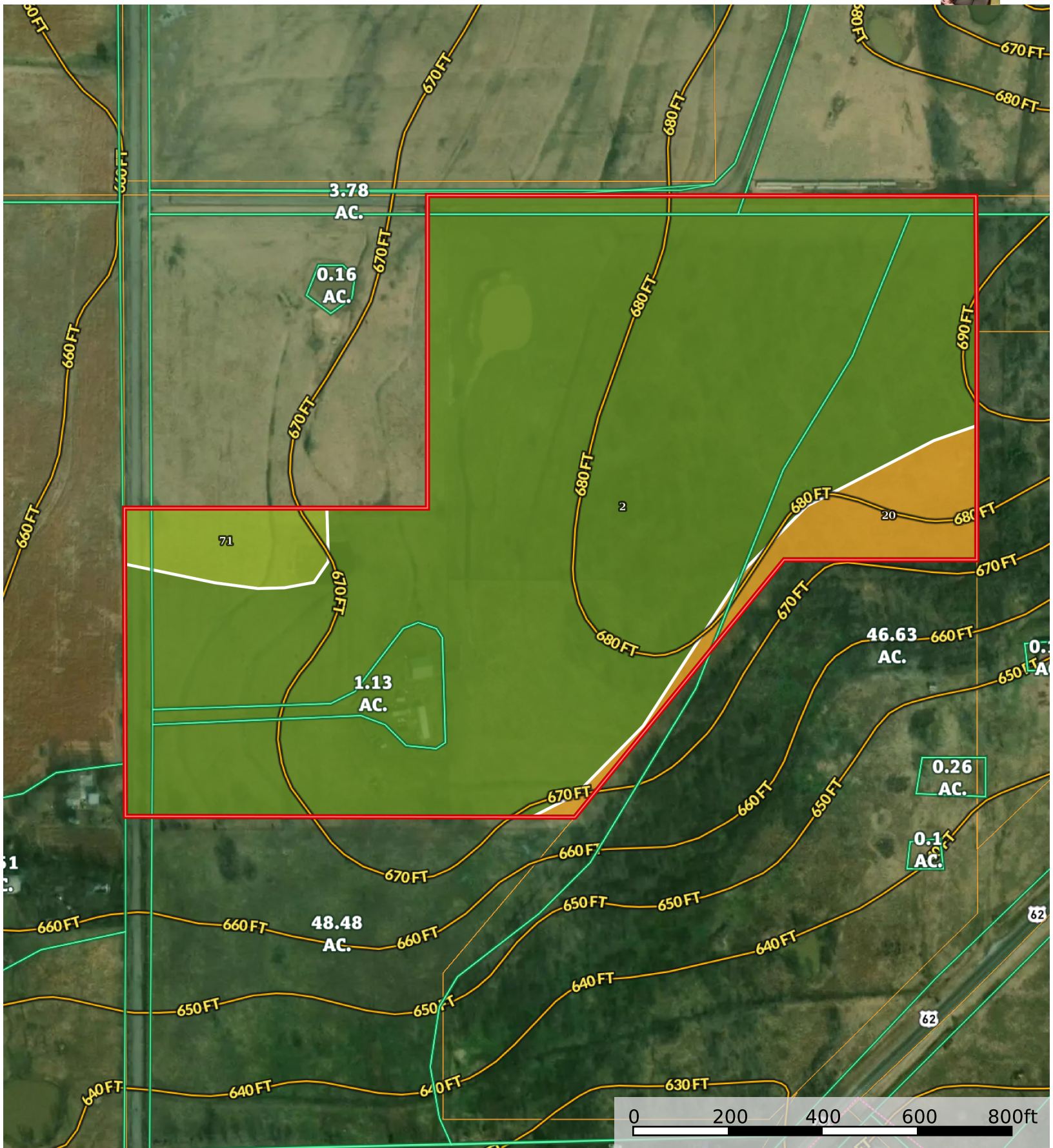


37.5 Acres with Septic + Tornado Shelter in Muskogee

Muskogee County, Oklahoma, AC +/-



Boundary

|  Boundary 36.71 ac

| SOIL CODE | SOIL DESCRIPTION | ACRES | % | CPI | NCCPI | CAP |
|-----------|--|----------|-------|-----|-------|------|
| 2 | Bates loam, 1 to 3 percent slopes | 32.91 | 89.65 | 0 | 66 | 2e |
| 20 | Eram-Coweta-Rock outcrop association, 8 to 12 percent slopes | 2.31 | 6.29 | 0 | 30 | 6e |
| 71 | Taloka silt loam, 1 to 3 percent slopes | 1.49 | 4.06 | 0 | 62 | 3s |
| TOTALS | | 36.71(*) | 100% | - | 63.57 | 2.29 |

(*) Total acres may differ in the second decimal compared to the sum of each acreage soil. This is due to a round error because we only show the acres of each soil with two decimal.

