

12.87± ACRE BLANK CANVAS COPIAH COUNTY, MS



\$77,220

Take a look at this excellent 12.87± acre spot out in the country of Copeiah County, MS! This cleared plot of land provides several options, whether you're setting up a homestead and want plenty of room to spread out or you're looking to set up a small horse or cattle operation! This property is conveniently located less than 20 minutes from the interstate and the amenities of Crystal Springs, MS. This property is also just over 30 minutes to the Jackson Metropolitan area, with plenty of amenities to be found. Electricity has already in place, so setting up right away should be no problem. Call Preston Smith for a private showing today!

Directions from the intersection of I-55 and MS-27 in Crystal Springs, MS: Travel west on MS-27 for 10.6 miles. Turn left onto Bear Creek Rd and travel 2.0 miles. Turn left onto New Zion Rd. Travel .5 miles, turn left onto Schubert Farms Ln. After .2 miles, the property will be on the left.



Call me today!

PRESTON SMITH, MANAGING BROKER
Preston@TomSmithLand.com
601.990.5070 **office** | 601.209.7150 **cell**



TomSmithLandandHomes.com

Information is believed to be accurate but not guaranteed.



Call me today!

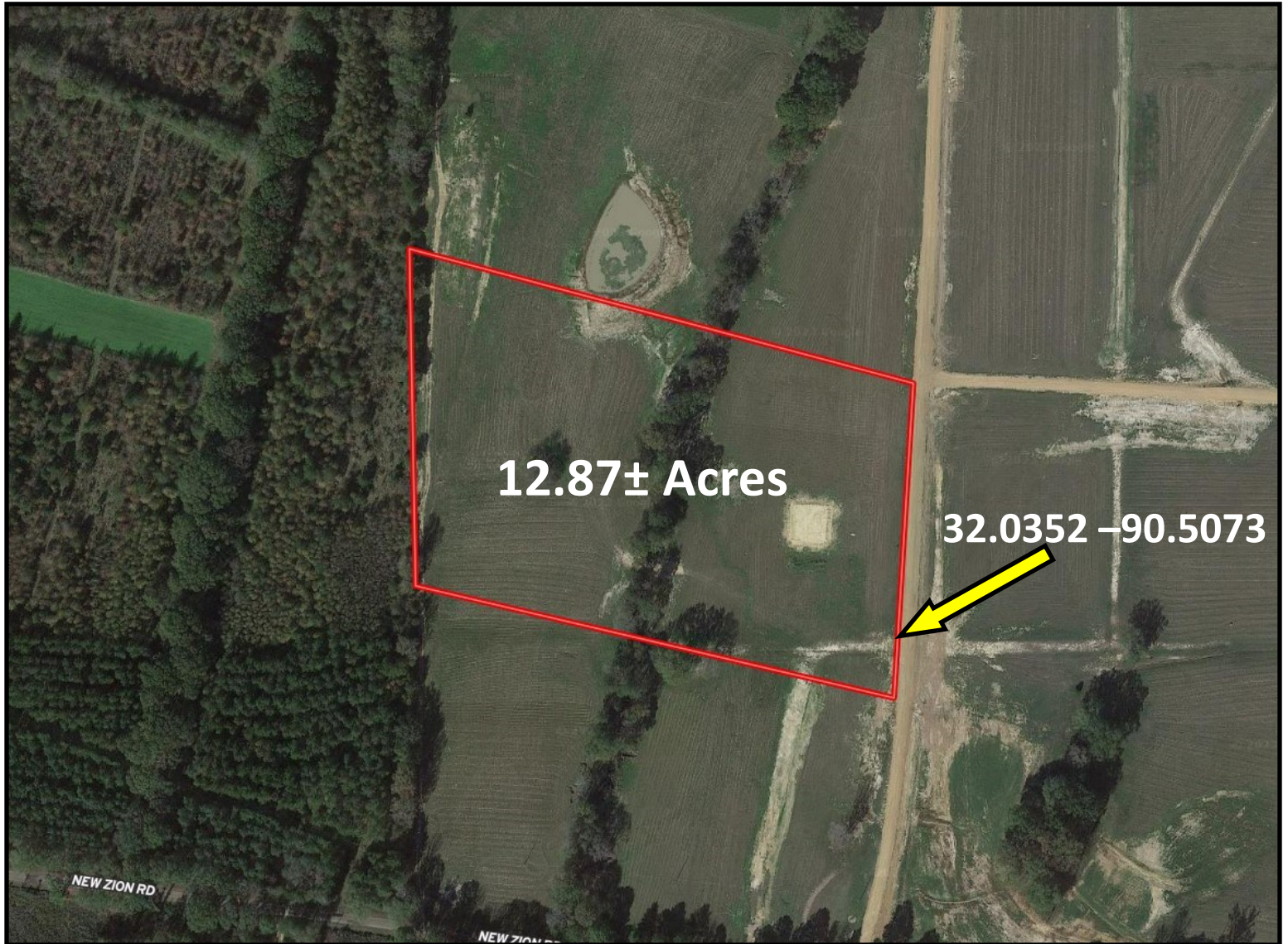
PRESTON SMITH, MANAGING BROKER
Preston@TomSmithLand.com
601.990.5070 office | 601.209.7150 cell



TomSmithLandandHomes.com

Information is believed to be accurate but not guaranteed.

AERIAL MAP



[Interactive Map Link](#)

Call me today!

PRESTON SMITH, MANAGING BROKER
Preston@TomSmithLand.com
601.990.5070 **office** | 601.209.7150 **cell**

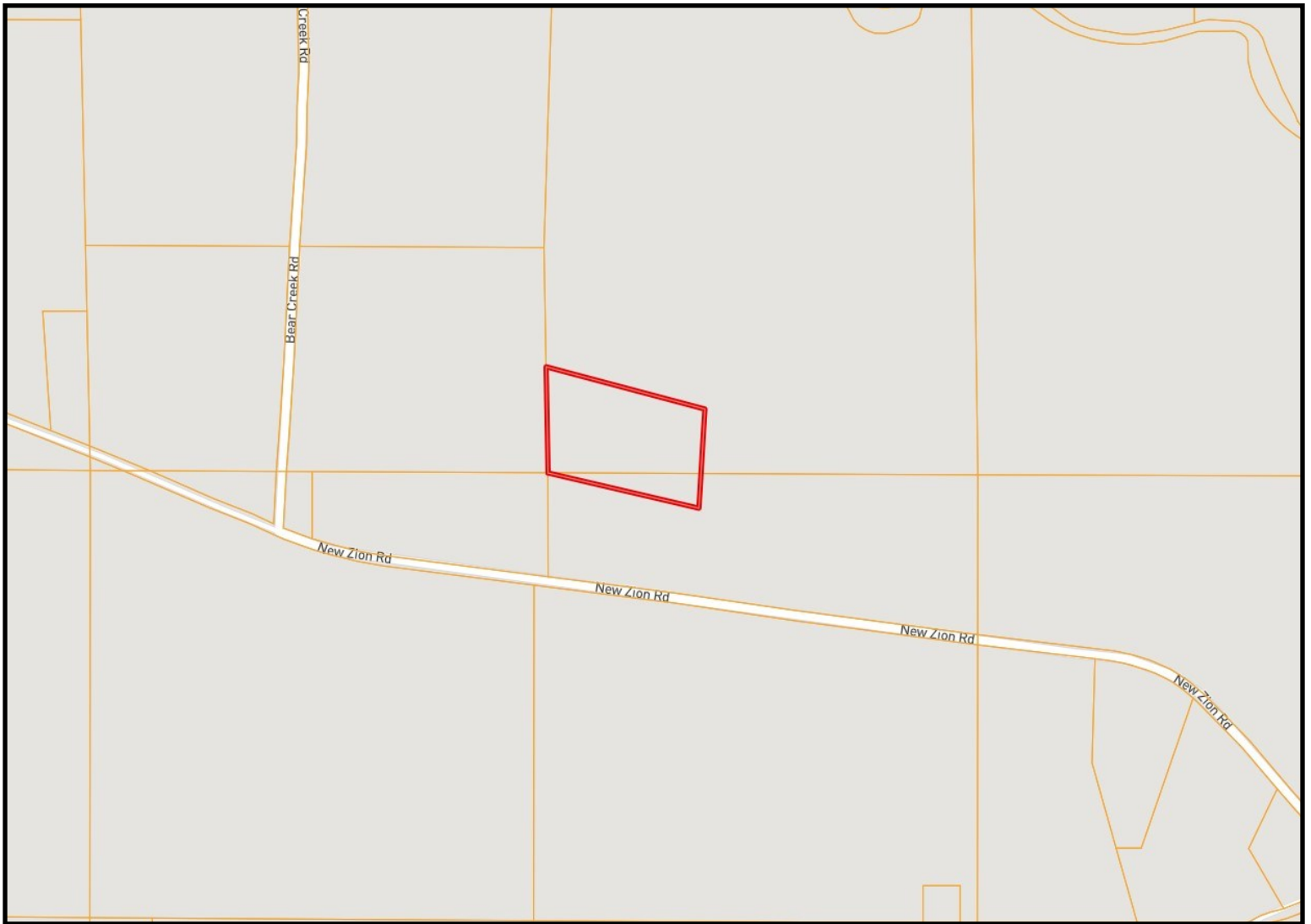


Expect More. Get More.

TomSmithLandandHomes.com

Information is believed to be accurate but not guaranteed.

OWNERSHIP MAP



Call me today!

PRESTON SMITH, MANAGING BROKER
Preston@TomSmithLand.com
601.990.5070 office | 601.209.7150 cell

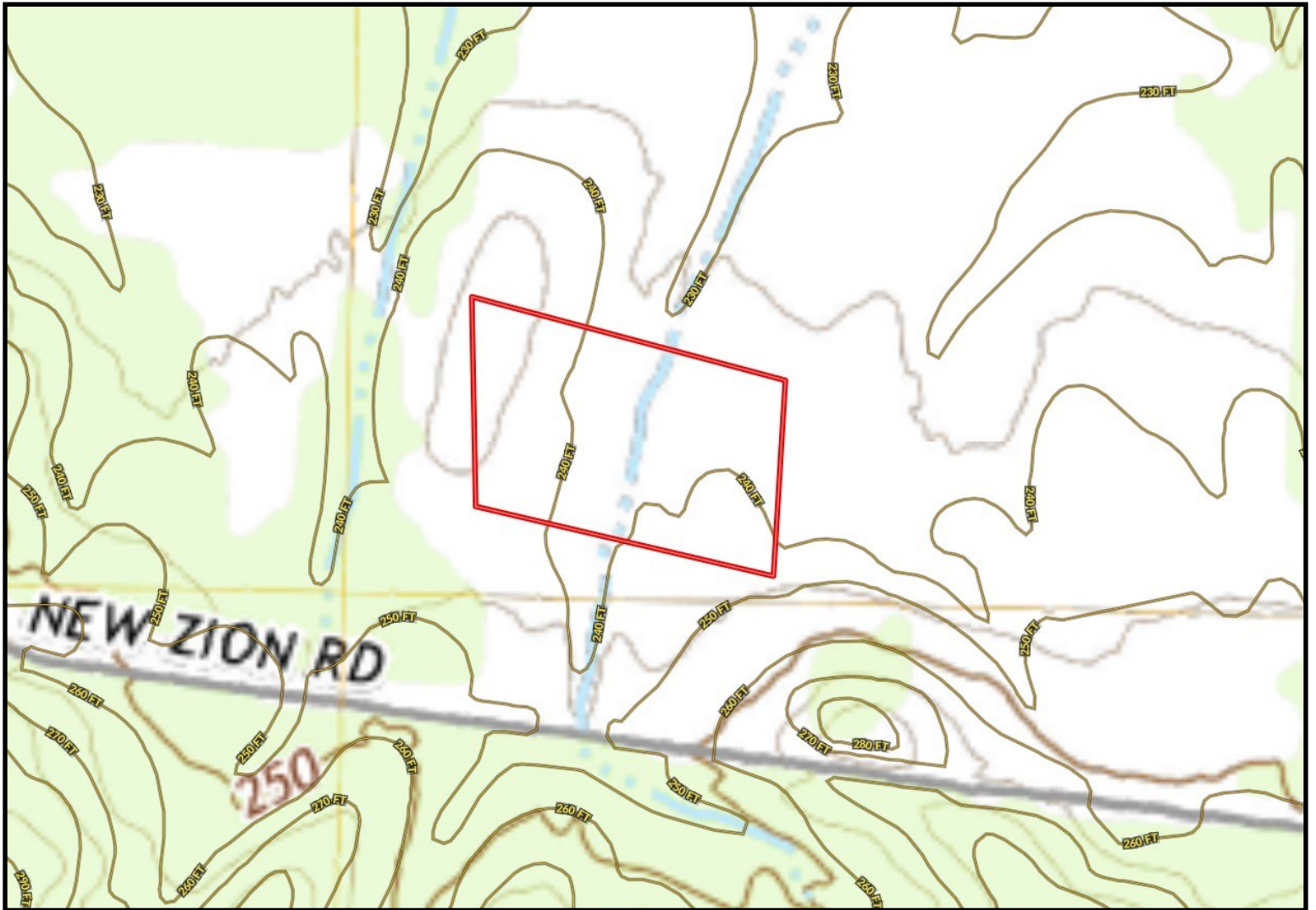


Expect More. Get More.

TomSmithLandandHomes.com

Information is believed to be accurate but not guaranteed.

TOPOGRAPHY MAP



Call me today!

PRESTON SMITH, MANAGING BROKER
Preston@TomSmithLand.com
601.990.5070 office | 601.209.7150 cell

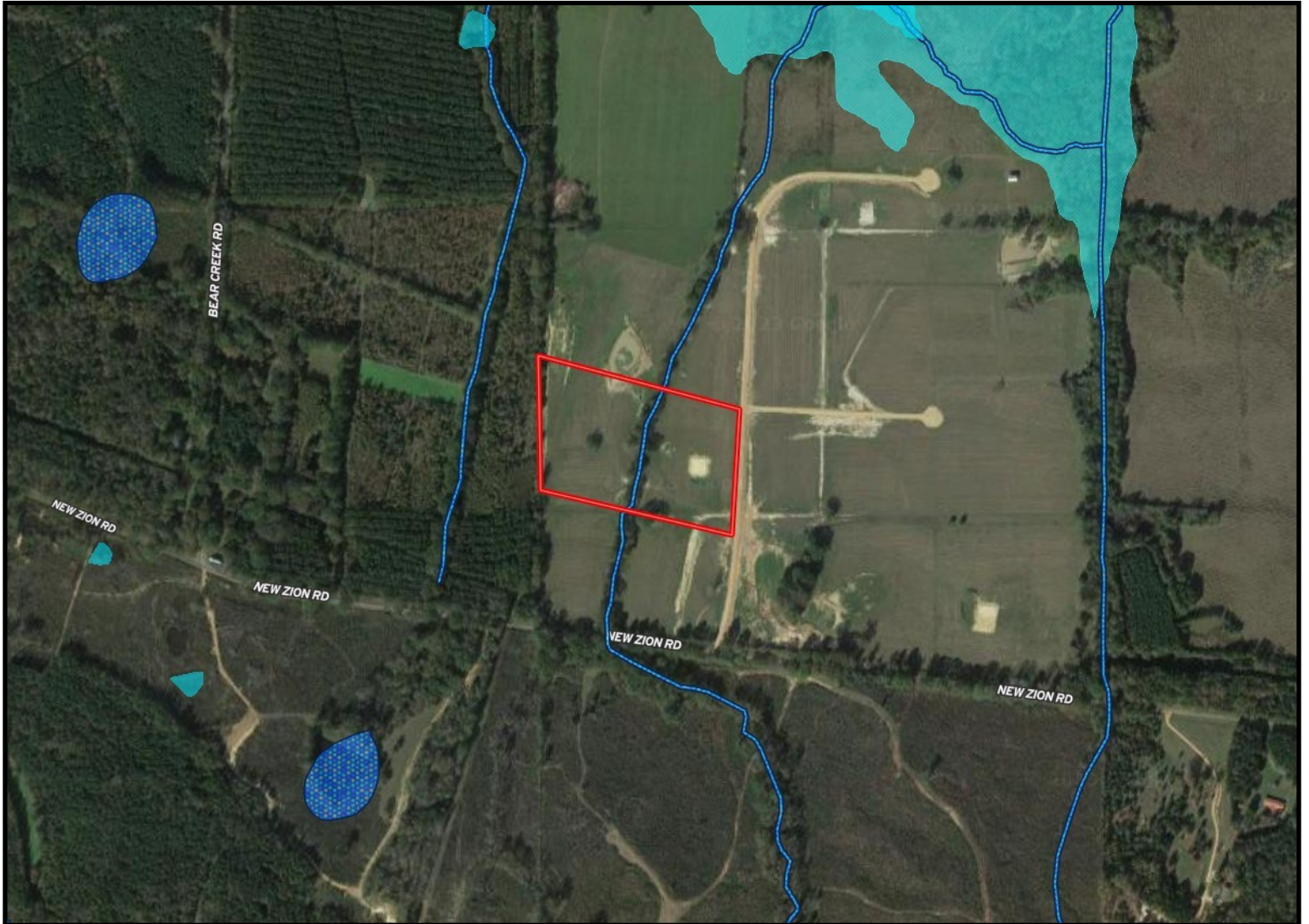


Expect More. Get More.

TomSmithLandandHomes.com

Information is believed to be accurate but not guaranteed.

FLOOD MAP



Call me today!

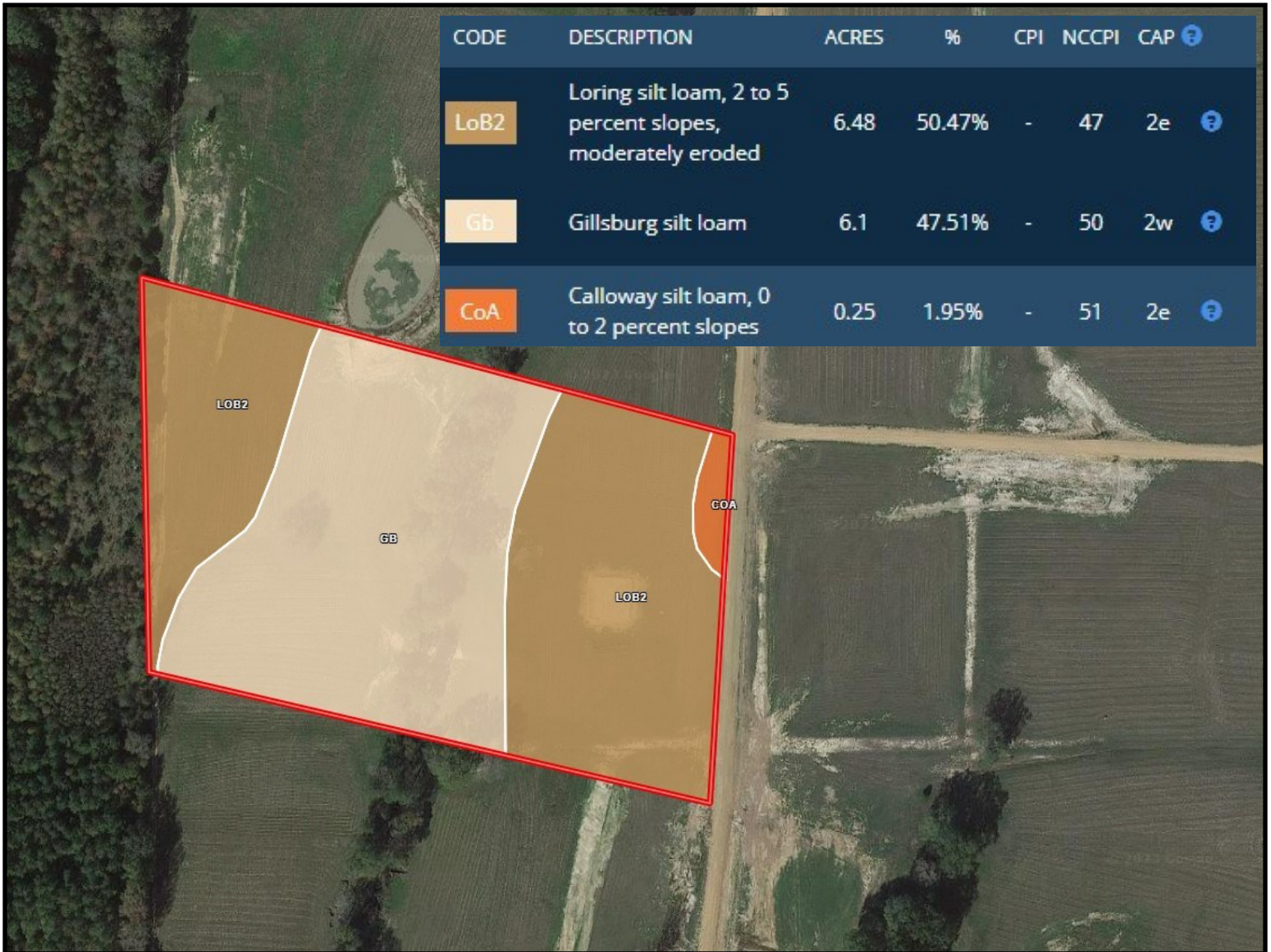
PRESTON SMITH, MANAGING BROKER
Preston@TomSmithLand.com
601.990.5070 office | 601.209.7150 cell



TomSmithLandandHomes.com

Information is believed to be accurate but not guaranteed.

SOIL MAP



Call me today!

PRESTON SMITH, MANAGING BROKER
 Preston@TomSmithLand.com
 601.990.5070 office | 601.209.7150 cell

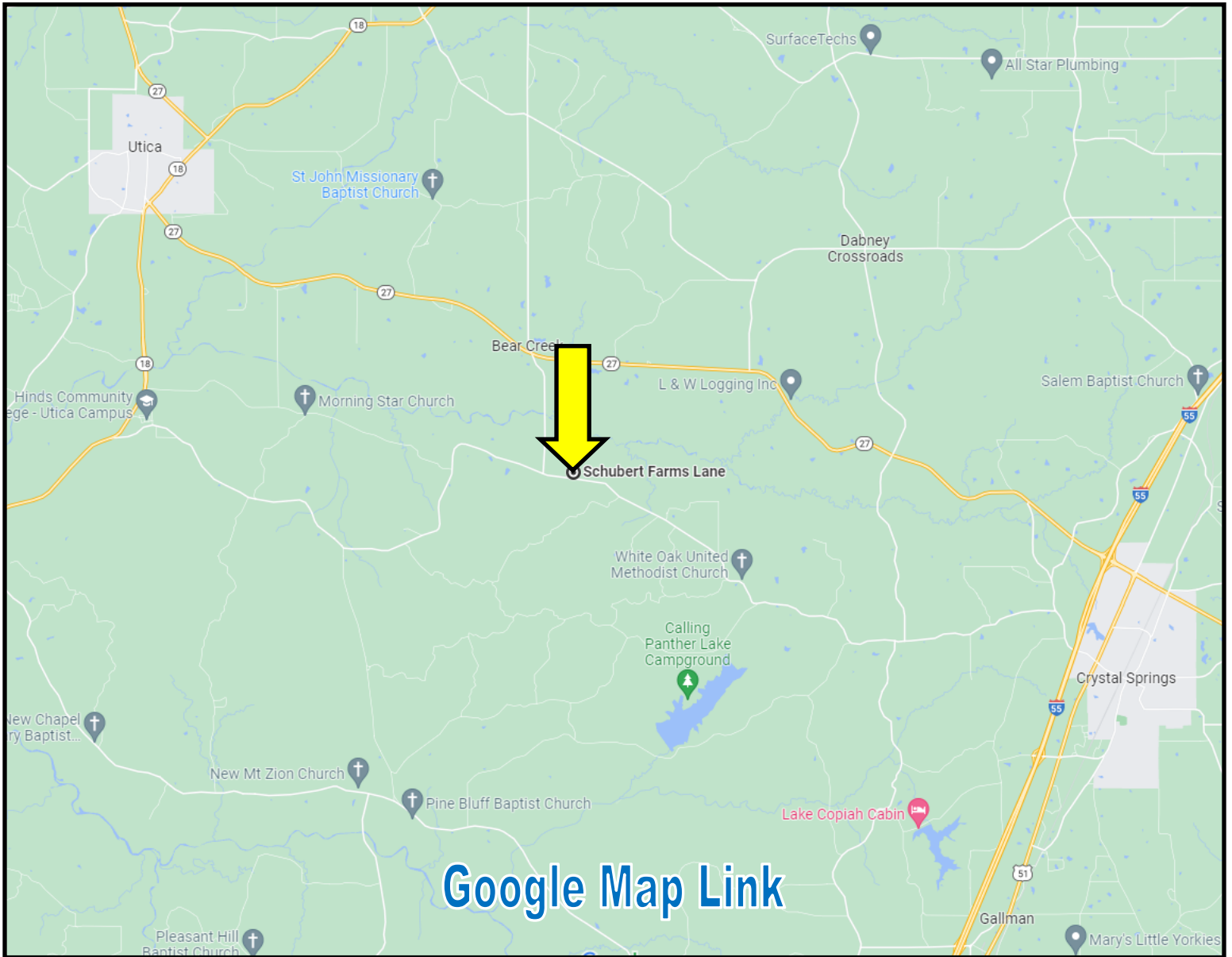


Expect More. Get More.

TomSmithLandandHomes.com

Information is believed to be accurate but not guaranteed.

DIRECTIONAL MAP



Directions from the intersection of I-55 and MS-27 in Crystal Springs, MS: Travel west on MS-27 for 10.6 miles. Turn left onto Bear Creek Rd, in 2.0 miles, turn left onto New Zion Rd. In .5 miles, turn left onto Schubert Farms Ln, in .2 miles, the property will be on the left.

Call me today!

PRESTON SMITH, MANAGING BROKER
Preston@TomSmithLand.com
601.990.5070 **office** | 601.209.7150 **cell**



Expect More. Get More.

TomSmithLandandHomes.com

Information is believed to be accurate but not guaranteed.