

101.4+/- Acres on Stokes Road in Flora Madison County, Mississippi



\$1,216,800

Have you been searching for the perfect opportunity to own your slice of heaven in Madison County? This well-established hunting land has plenty of deer and the occasional turkey. This 101.4+/- acre property has five established food plots with shooting houses in place. There is also a stocked 1+/- acre pond with a creek running through the property. If you want livestock, there are approximately 52+/- acres of pasture area as well. The land is gently rolling, with a mix of hardwood and pine trees providing shade and scenic beauty. The property has several potential building sites, making it an ideal location for a private retreat or family estate. The property is conveniently located just a short drive from the growing town of Flora, which offers a variety of restaurants, shops, and local amenities. Additionally, the nearby Ross Barnett Reservoir provides opportunities for boating, fishing, and other water activities. The property is situated in a highly desirable area of Madison County, with excellent schools and a growing economy. Give Allyson a call to schedule your showing today!



Call me today!

ALLYSON MIZE, REALTOR®
Allyson@TomSmithHomes.com
601.898.2772 **office** | 662.607.1703 **cell**



TomSmithLandandHomes.com

Information is believed to be accurate but not guaranteed.



Call me today!

ALLYSON MIZE, REALTOR®
Allyson@TomSmithHomes.com
601.898.2772 office | 662.607.1703 cell



Expect More. Get More.



TomSmithLandandHomes.com

Information is believed to be accurate but not guaranteed.



Call me today!

ALLYSON MIZE, REALTOR®
Allyson@TomSmithHomes.com
601.898.2772 office | 662.607.1703 cell



TomSmithLandandHomes.com

Information is believed to be accurate but not guaranteed.



Call me today!

ALLYSON MIZE, REALTOR®
Allyson@TomSmithHomes.com
601.898.2772 office | 662.607.1703 cell



TomSmithLandandHomes.com

Information is believed to be accurate but not guaranteed.



Call me today!

ALLYSON MIZE, REALTOR®
Allyson@TomSmithHomes.com
601.898.2772 office | 662.607.1703 cell



TomSmithLandandHomes.com

Information is believed to be accurate but not guaranteed.

AERIAL MAP



Call me today!

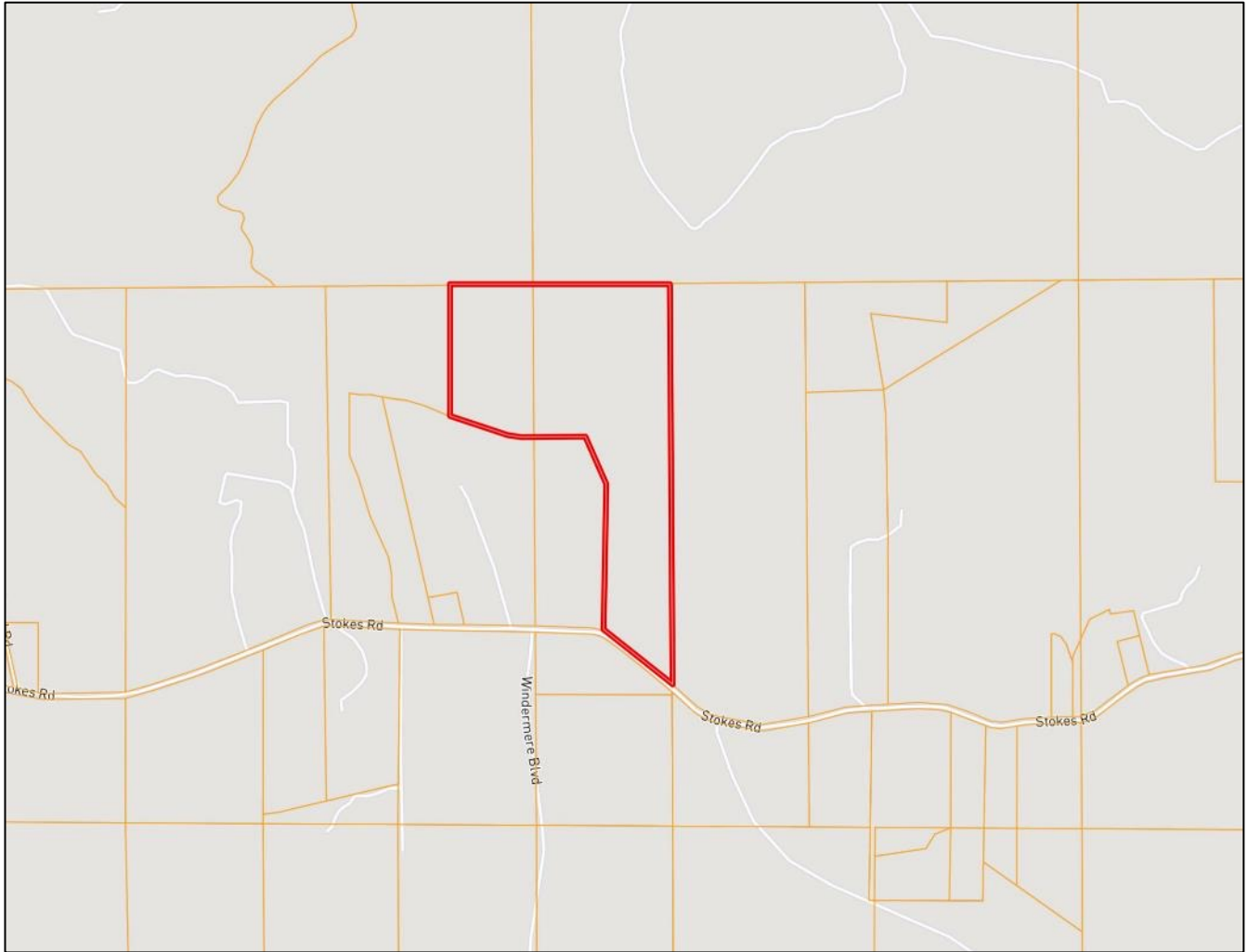
ALLYSON MIZE, REALTOR®
Allyson@TomSmithHomes.com
601.898.2772 office | 662.607.1703 cell



TomSmithLandandHomes.com

Information is believed to be accurate but not guaranteed.

OWNERSHIP MAP



Call me today!

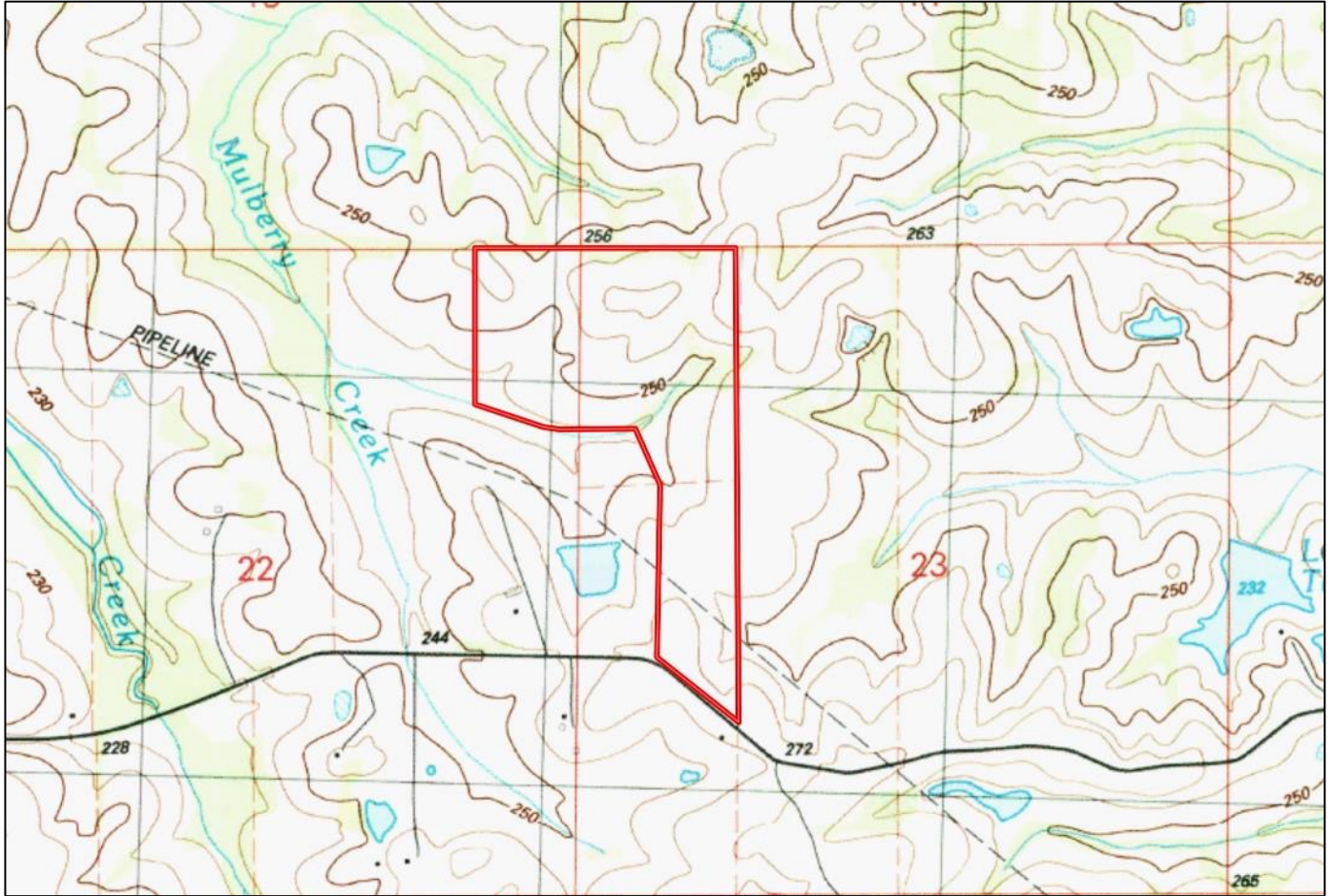
ALLYSON MIZE, REALTOR®
Allyson@TomSmithHomes.com
601.898.2772 office | 662.607.1703 cell



TomSmithLandandHomes.com

Information is believed to be accurate but not guaranteed.

TOPOGRAPHY MAP



Call me today!

ALLYSON MIZE, REALTOR®
Allyson@TomSmithHomes.com
601.898.2772 office | 662.607.1703 cell



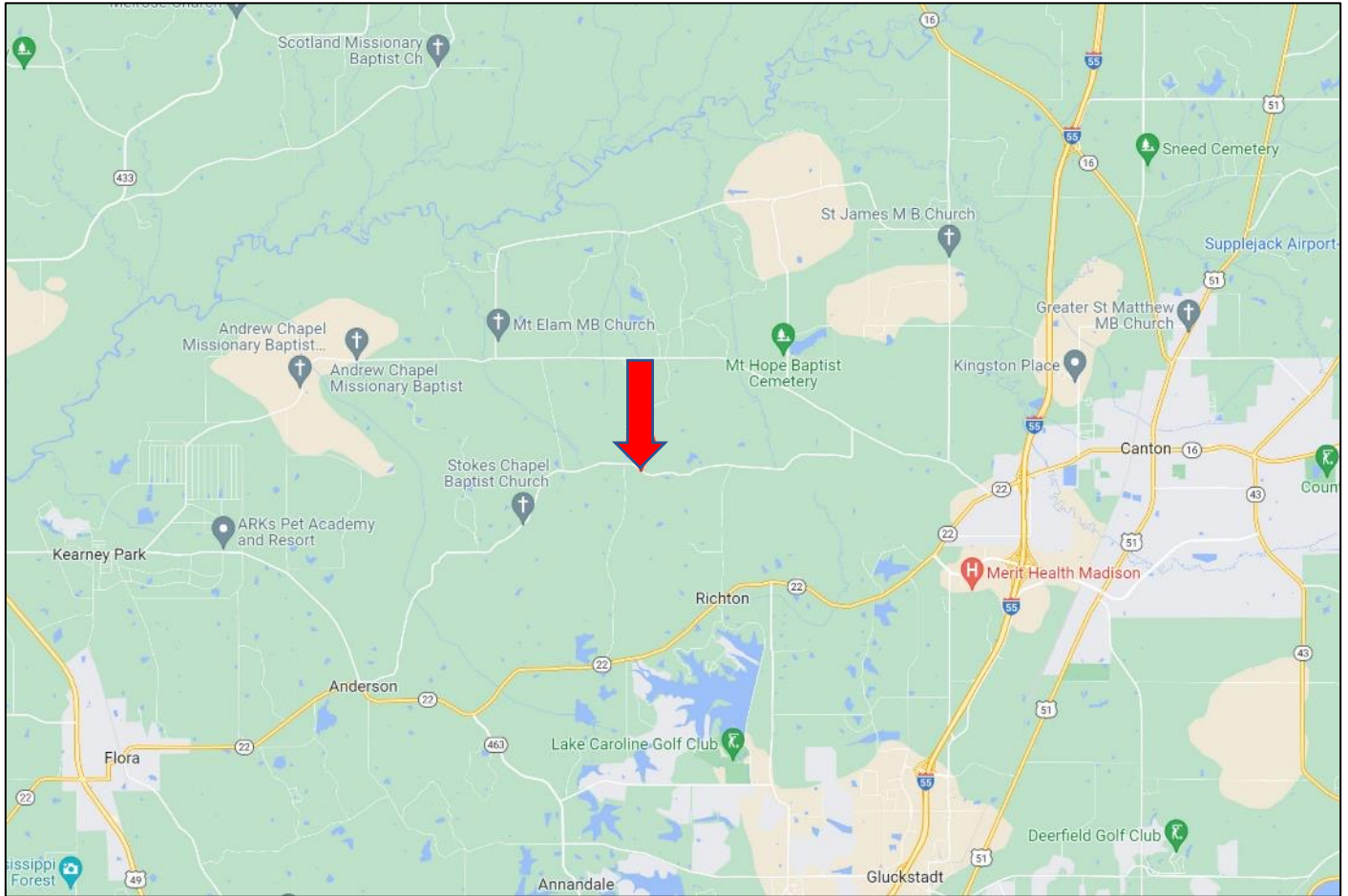
Expect More. Get More.



TomSmithLandandHomes.com

Information is believed to be accurate but not guaranteed.

DIRECTIONAL MAP



DIRECTIONS FROM I-55 NORTH IN CANTON, MS: Take exit 119 for Canton/Hwy 22 towards Flora, MS. Travel 0.6 miles and turn right onto Virllia Rd. Travel 2.4 miles then turn left onto Stokes Road. After approximately 4.5 miles, the property will be on your right at the start of the white fence. [GOOGLE MAP LINK](#)



Call me today!

ALLYSON MIZE, REALTOR®
Allyson@TomSmithHomes.com
601.898.2772 **office** | 662.607.1703 **cell**



TomSmithLandandHomes.com

Information is believed to be accurate but not guaranteed.