

# Beautiful Home in Hinds County on 2+/- Acres



This beautiful Hinds County home is just the one for you. Although the home is in Hinds County it is actually zoned for Madison County School District; Elementary (East Flora), Middle School (Madison Middle), Junior High (Rosa Scott), High School (Madison Central). This home is approximately 2,240 sqft heated and cooled. The home is 4 bed 2 bath and has recently been updated. It is a manufactured home built in 2002 on approximately 2 acres with a huge carport/shop. This home offers a massive owners suite and bathroom with its own sitting area. This one won't last long, call Travis Smith today!

[104 Rabbit Run Ln Bolton, MS](#)



*Call me today!*

**TRAVIS SMITH**, REALTOR®  
Travis@TomSmithLand.com  
601.898.2772 office | 601.600.0428 cell



[TomSmithLandandHomes.com](http://TomSmithLandandHomes.com)

Information is believed to be accurate but not guaranteed.



*Call me today!*

**TRAVIS SMITH, REALTOR®**  
Travis@TomSmithLand.com  
601.898.2772 **office** | 601.600.0428 **cell**



Expect More. Get More.

**TomSmithLandandHomes.com**

Information is believed to be accurate but not guaranteed.



*Call me today!*

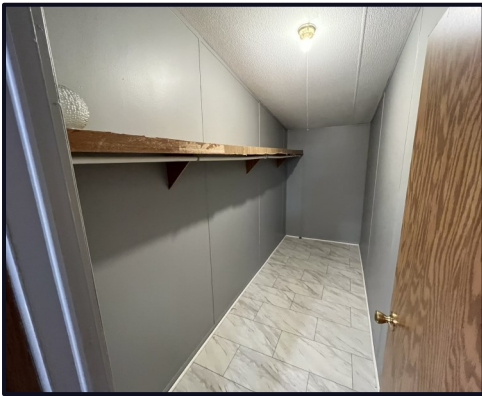
**TRAVIS SMITH, REALTOR®**  
Travis@TomSmithLand.com  
601.898.2772 office | 601.600.0428 cell



Expect More. Get More.

**TomSmithLandandHomes.com**

Information is believed to be accurate but not guaranteed.



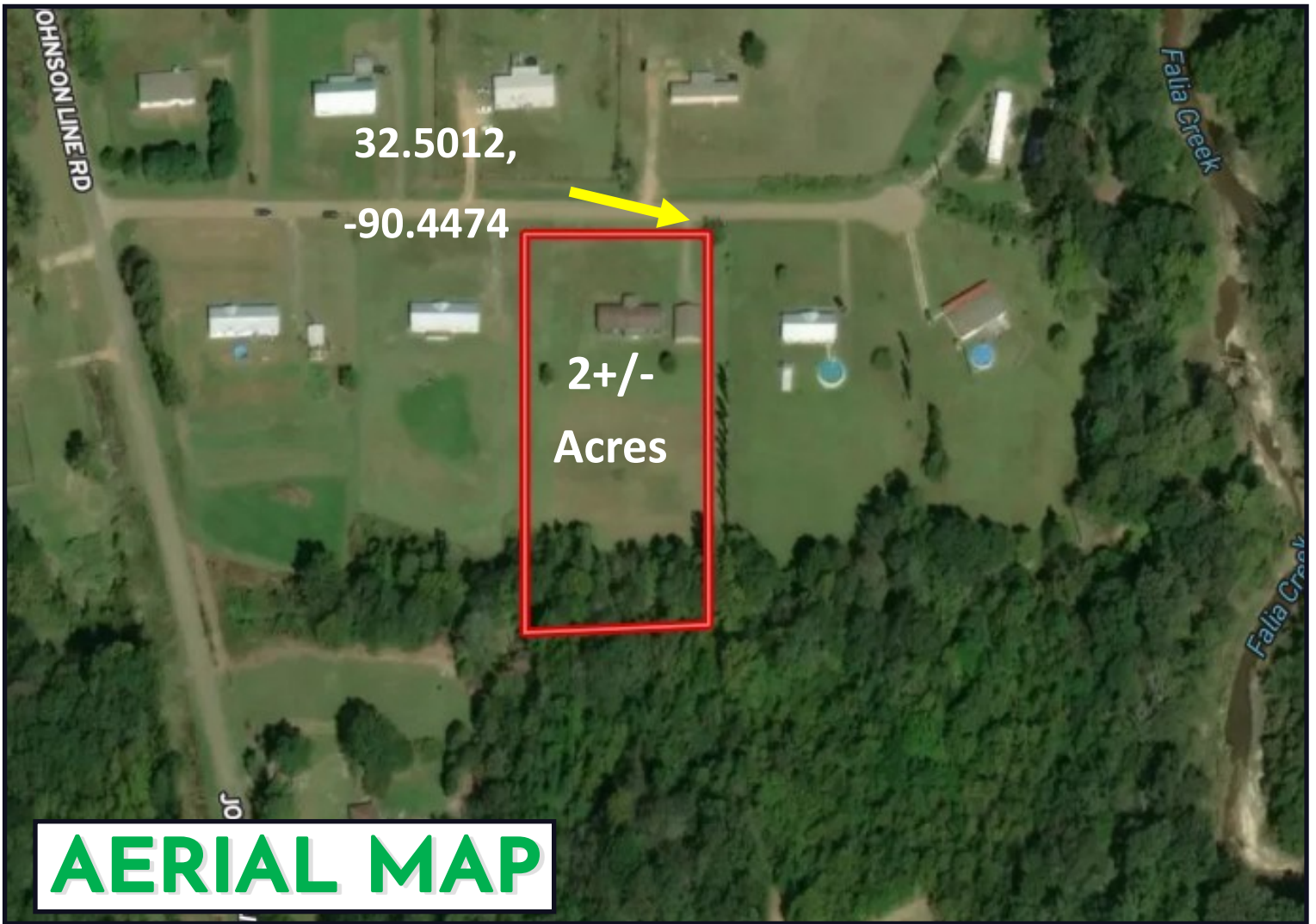
*Call me today!*

**TRAVIS SMITH, REALTOR®**  
Travis@TomSmithLand.com  
601.898.2772 office | 601.600.0428 cell



**TomSmithLandandHomes.com**

Information is believed to be accurate but not guaranteed.



[CLICK HERE FOR AN INTERACTIVE MAP](#)

*Call me today!*

**TRAVIS SMITH**, REALTOR®  
Travis@TomSmithLand.com  
601.898.2772 office | 601.600.0428 cell



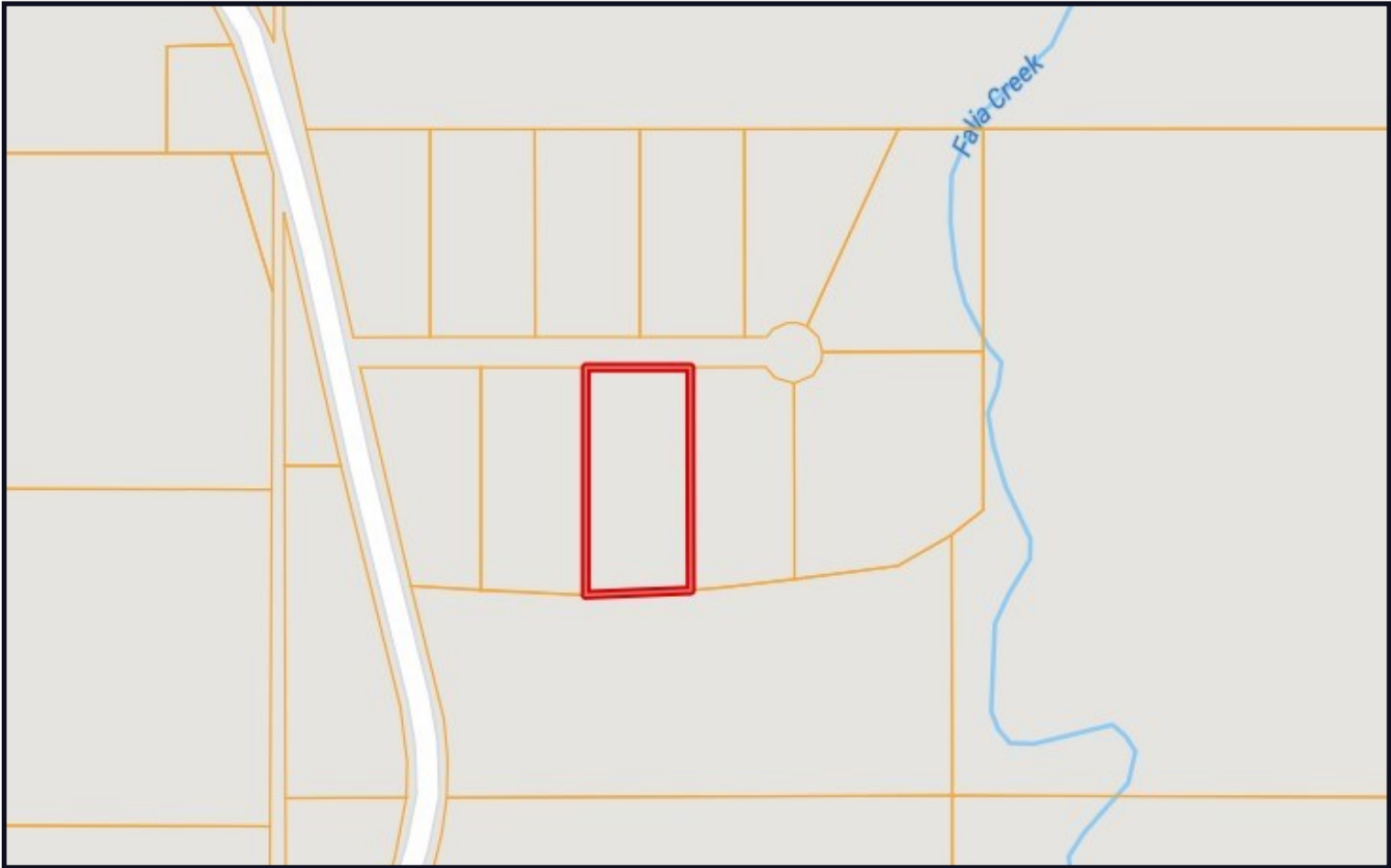
Expect More. Get More.



**TomSmithLandandHomes.com**

Information is believed to be accurate but not guaranteed.

# OWNERSHIP MAP



*Call me today!*

**TRAVIS SMITH**, REALTOR®  
Travis@TomSmithLand.com  
601.898.2772 **office** | 601.600.0428 **cell**



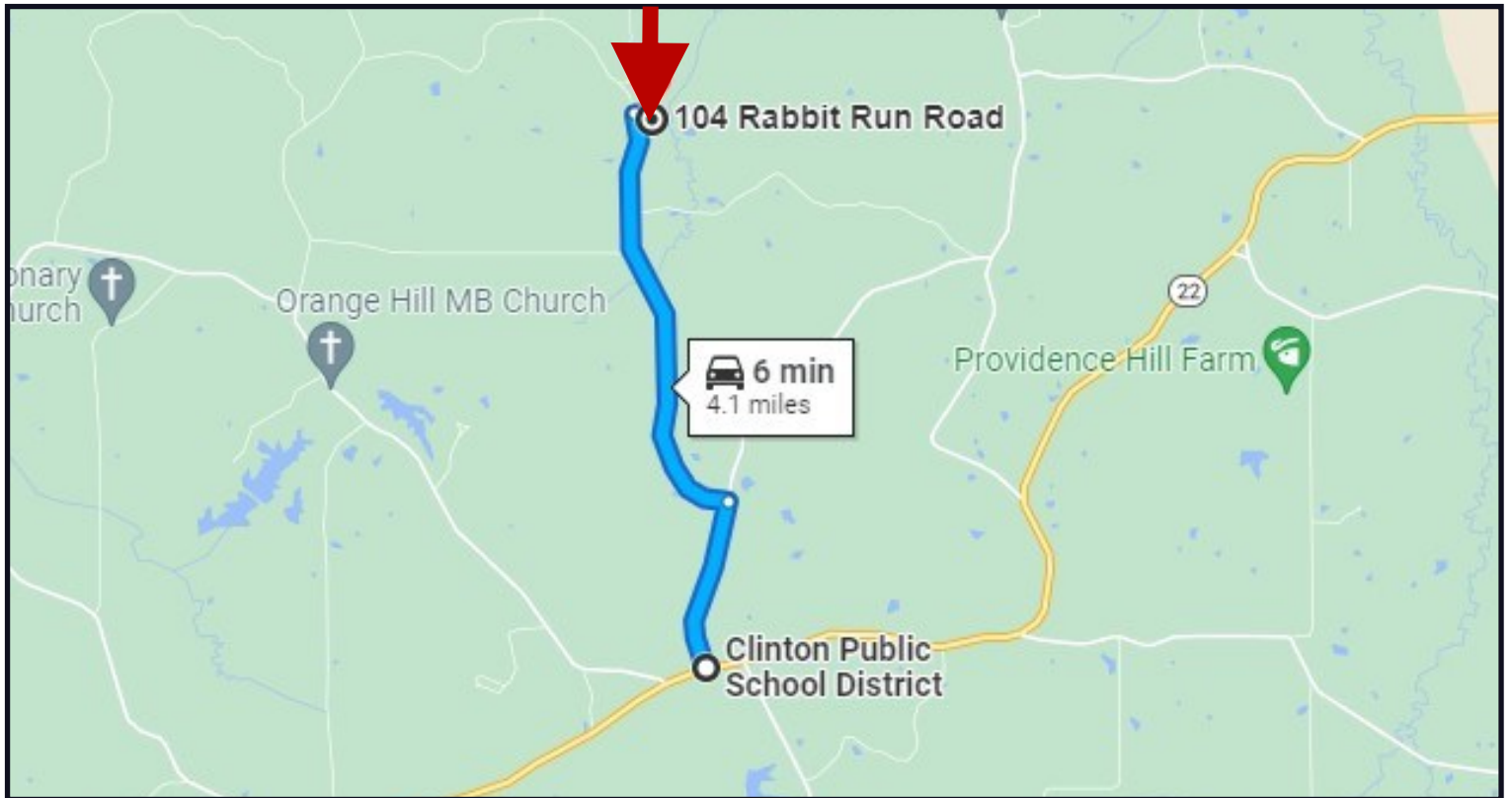
Expect More. Get More.



**TomSmithLandandHomes.com**

Information is believed to be accurate but not guaranteed.

# DIRECTIONAL MAP



Directions from Intersection Hwy 22 and Trotter Rd in Bolton, MS:

Head north on Trotter Rd for 1.1 miles then Turn left onto Johnson Line Rd and travel for 2.9 miles, then Turn right onto Rabbit Run Rd and the property will be on the right in 0.1 miles.

[104 Rabbit Run Ln Bolton, MS](#)



*Call me today!*

**TRAVIS SMITH, REALTOR®**  
Travis@TomSmithLand.com  
601.898.2772 office | 601.600.0428 cell



**TomSmithLandandHomes.com**

Information is believed to be accurate but not guaranteed.