

DIVERSE RECREATIONAL TRACT

178± Acres in Lauderdale County, MS



\$505,000

Are you in search of a diverse turn-key property in Lauderdale County, MS? Look no further than this gem of a property located in the sought-after West Lauderdale school district, just 11 miles north of North Hills Street in Meridian, MS. This 178± acre property in North Lauderdale county boasts mainly 23-year-old planted pine plantation, offering great timber value. This property has been expertly laid out for hunting and is hunt-ready, with six strategically placed food plots that offer established annual plots for the plentiful deer and turkeys on the tract. The road system is second to none, providing easy access to each food plot and all parts of the property. As you enter through the front gate, you'll first come to a barn for all of your equipment storage needs. Just over the hill, a 2± acre lake sits in the central portion of the property, along with a big slough on the east side that offers several good spots for wood duck hunting. This turn-key property has it all and is perfect for anyone looking for a diverse and well-designed property. To schedule a private showing, give Brett a call today.



Call me today!

BRETT CARNEY, REALTOR®
Brett@TomSmithLand.com
601.898.2772 office | 601.710.9633 cell



TomSmithLandandHomes.com

Information is believed to be accurate but not guaranteed.



Call me today!

BRETT CARNEY, REALTOR®
Brett@TomSmithLand.com
601.898.2772 office | 601.710.9633 cell



Expect More. Get More.



TomSmithLandandHomes.com

Information is believed to be accurate but not guaranteed.



Call me today!

BRETT CARNEY, REALTOR®
Brett@TomSmithLand.com
601.898.2772 office | 601.710.9633 cell



Expect More. Get More.



TomSmithLandandHomes.com

Information is believed to be accurate but not guaranteed.



Call me today!

BRETT CARNEY, REALTOR®
Brett@TomSmithLand.com
601.898.2772 office | 601.710.9633 cell



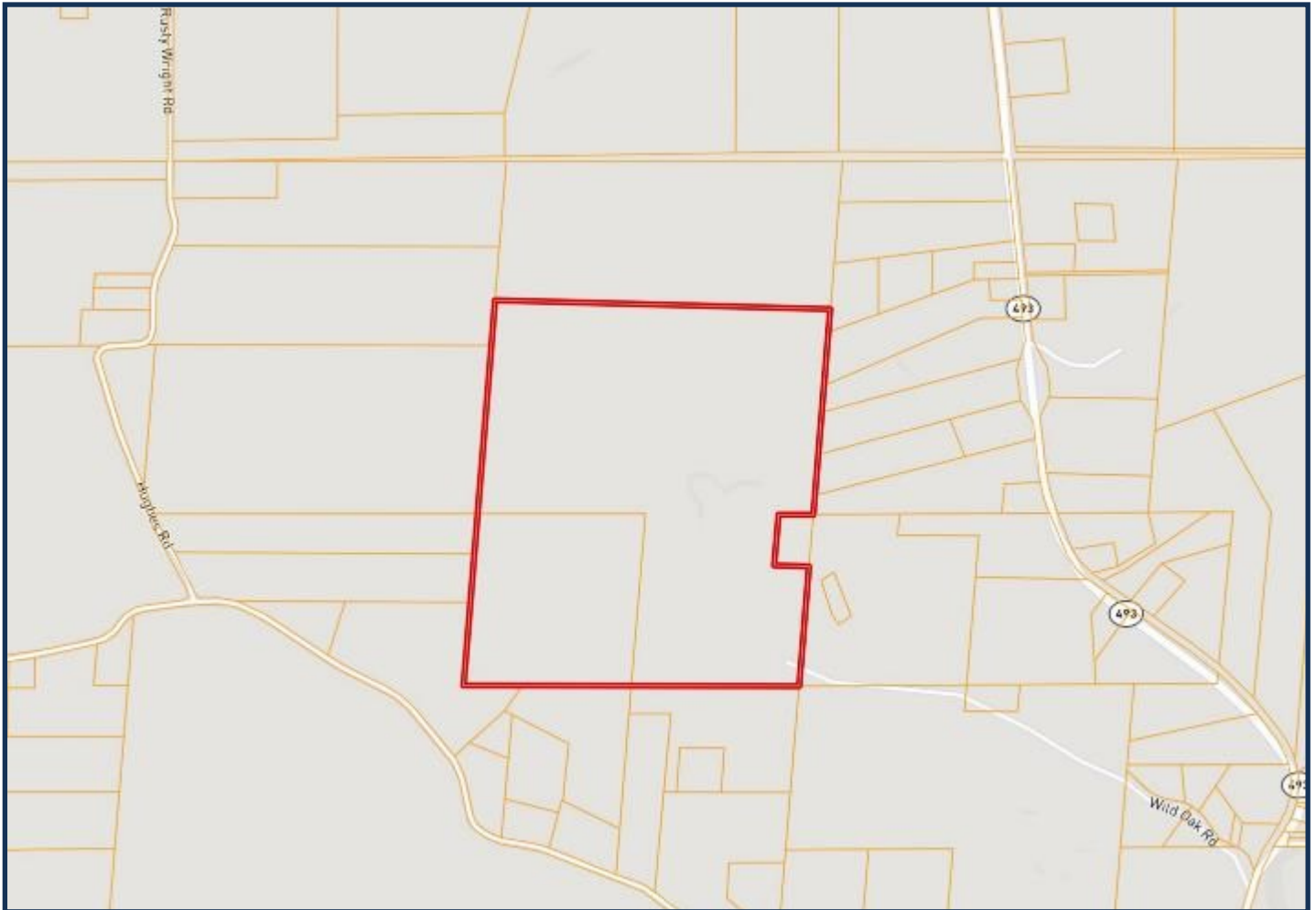
Expect More. Get More.



TomSmithLandandHomes.com

Information is believed to be accurate but not guaranteed.

OWNERSHIP MAP



Call me today!

BRETT CARNEY, REALTOR®
Brett@TomSmithLand.com
601.898.2772 office | 601.710.9633 cell



TomSmithLandandHomes.com

Information is believed to be accurate but not guaranteed.

AERIAL MAP



[Click Here for an Interactive Map](#)

Call me today!

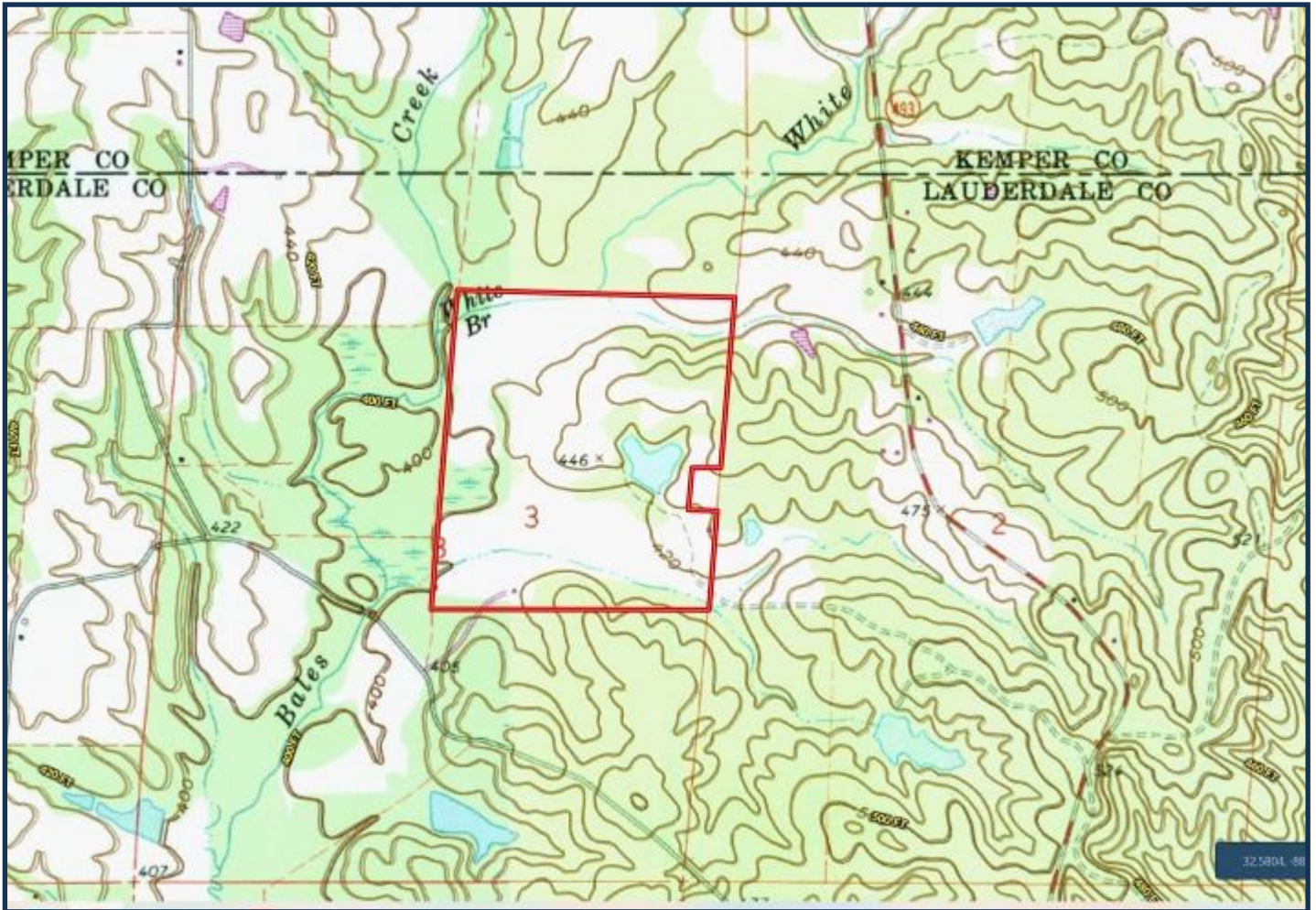
BRETT CARNEY, REALTOR®
Brett@TomSmithLand.com
601.898.2772 office | 601.710.9633 cell



TomSmithLandandHomes.com

Information is believed to be accurate but not guaranteed.

TOPO MAP



Call me today!

BRETT CARNEY, REALTOR®

Brett@TomSmithLand.com

601.898.2772 office | 601.710.9633 cell



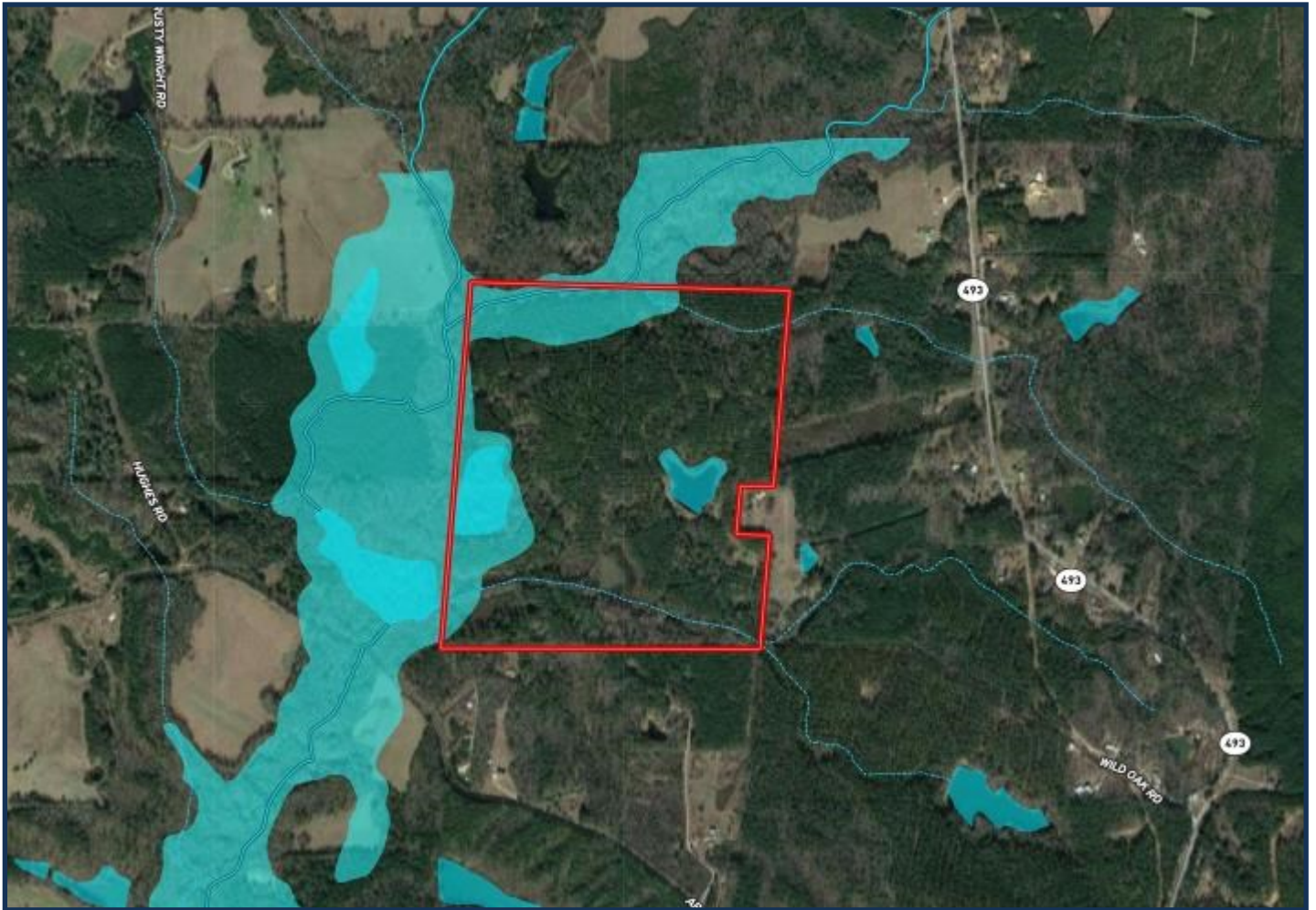
Expect More. Get More.



TomSmithLandandHomes.com

Information is believed to be accurate but not guaranteed.

FLOODPLAIN/WATER FEATURES



Call me today!

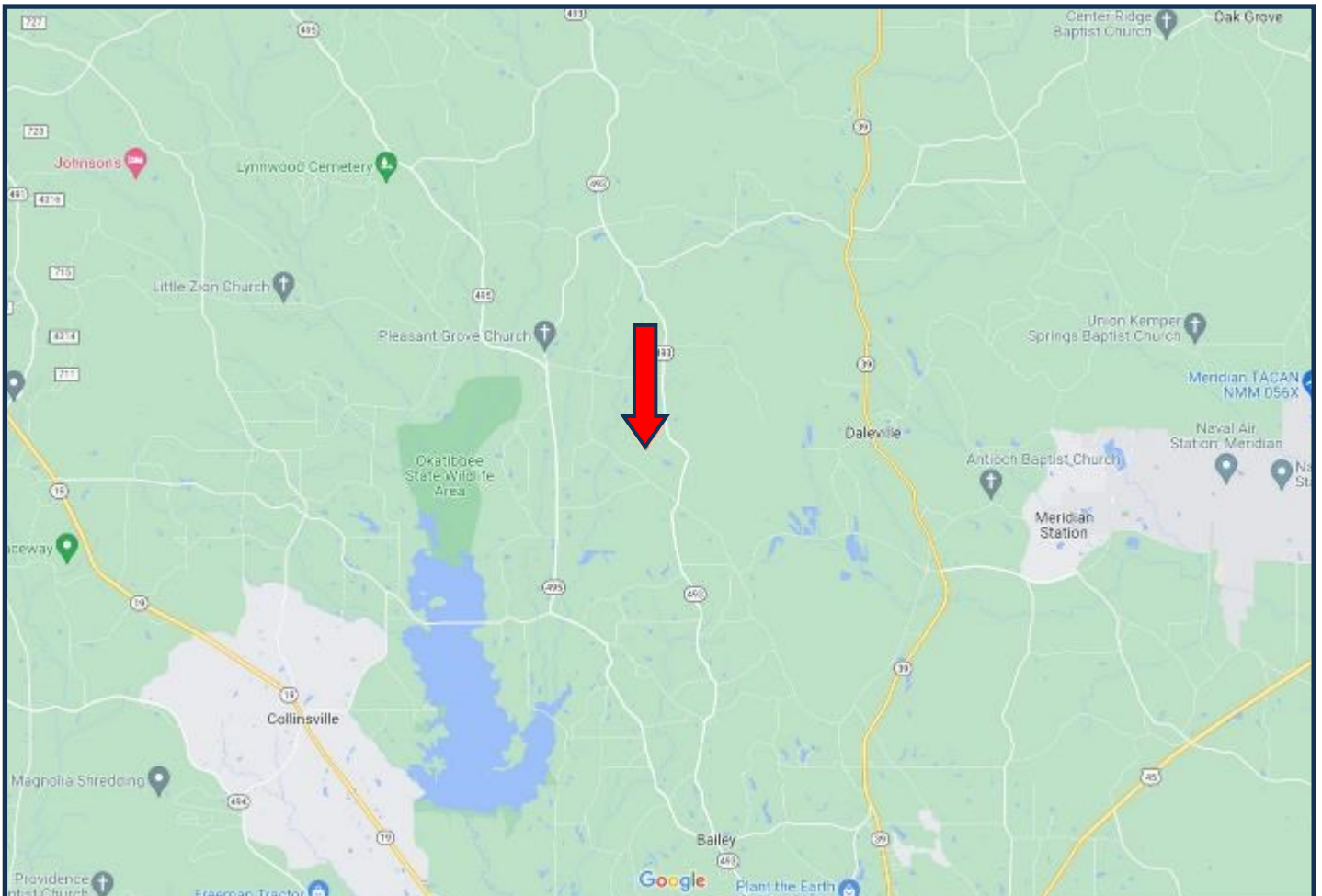
BRETT CARNEY, REALTOR®
Brett@TomSmithLand.com
601.898.2772 office | 601.710.9633 cell



TomSmithLandandHomes.com

Information is believed to be accurate but not guaranteed.

DIRECTIONAL MAP



DIRECTIONS FROM THE INTERSECTION OF ARKADELPHIA ROAD AND HWY 493 IN BAILEY, MS:
Travel Hwy 493 for .7 miles. Turn left on Wild Oak Road. After .7 miles the entrance to the property
will be on your left. [GOOGLE MAP LINK](#)



Call me today!

BRETT CARNEY, REALTOR®
Brett@TomSmithLand.com
601.898.2772 office | 601.710.9633 cell



TomSmithLandandHomes.com

Information is believed to be accurate but not guaranteed.