

1111 North Yale St
Cleveland, MS 38732
Bolivar County
\$139,500



PROPERTY INFORMATION:

3 Bedroom, 2 Bathroom
1464 Sq Ft
Built In 1965

TAXES:

33-20-695-00-02600
No Tax Exemption
2022 - \$2385.13



Call me today!

TRACEY BELL, MANAGING BROKER
Tracey@TomSmithLand.com
662.441.2500 office | 662.719.4720 cell



Expect More. Get More.



TomSmithLandandHomes.com

Information is believed to be accurate but not guaranteed.



The den has a large picture window allowing plenty of natural light to flow into the home. The kitchen cabinets are a gorgeous natural wood finish, and the black and white flooring makes this kitchen pop!

Call me today!

TRACEY BELL, MANAGING BROKER
Tracey@TomSmithLand.com
662.441.2500 **office** | 662.719.4720 **cell**



TomSmithLandandHomes.com

Information is believed to be accurate but not guaranteed.

There are three bedrooms with a possible fourth bedroom if needed. Two bedrooms are in the front of the home, and the primary bedroom and bathroom are in the rear. The fourth bedroom could be a walkthrough to the primary bedroom, making a great nursery or study.



Call me today!

TRACEY BELL, MANAGING BROKER
Tracey@TomSmithLand.com
662.441.2500 **office** | 662.719.4720 **cell**



TomSmithLandandHomes.com

Information is believed to be accurate but not guaranteed.



There are two full bathrooms. One is a shared bathroom, and the other is the primary bathroom. The backyard is fenced with a nice storage shed with electricity.



Call me today!

TRACEY BELL, MANAGING BROKER
Tracey@TomSmithLand.com
662.441.2500 **office** | 662.719.4720 **cell**



TomSmithLandandHomes.com

Information is believed to be accurate but not guaranteed.

AERIAL MAP



[Click for Interactive Map](#)

Call me today!

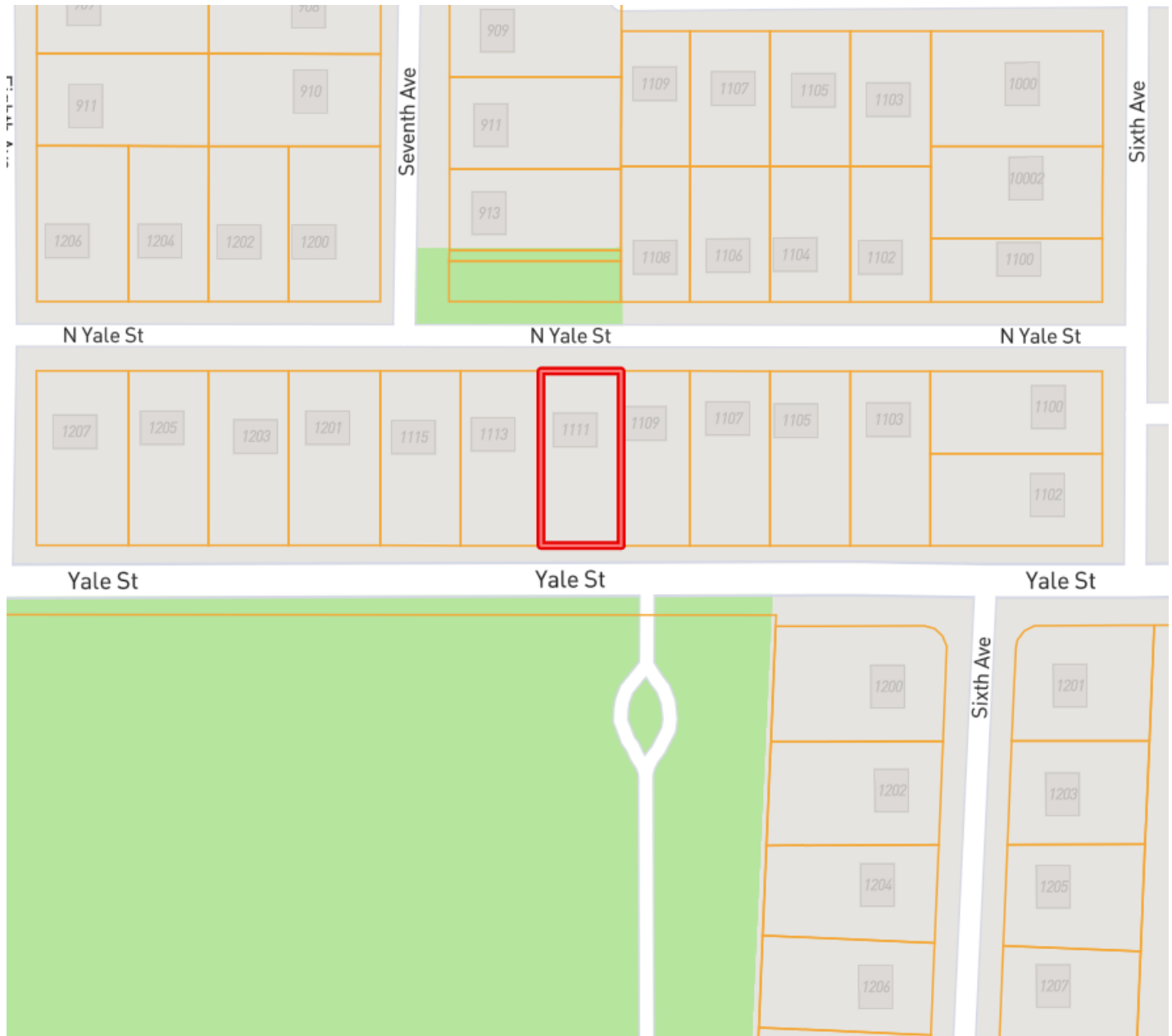
TRACEY BELL, MANAGING BROKER
Tracey@TomSmithLand.com
662.441.2500 **office** | 662.719.4720 **cell**



TomSmithLandandHomes.com

Information is believed to be accurate but not guaranteed.

OWNERSHIP MAP



Call me today!

TRACEY BELL, MANAGING BROKER
Tracey@TomSmithLand.com
662.441.2500 **office** | 662.719.4720 **cell**

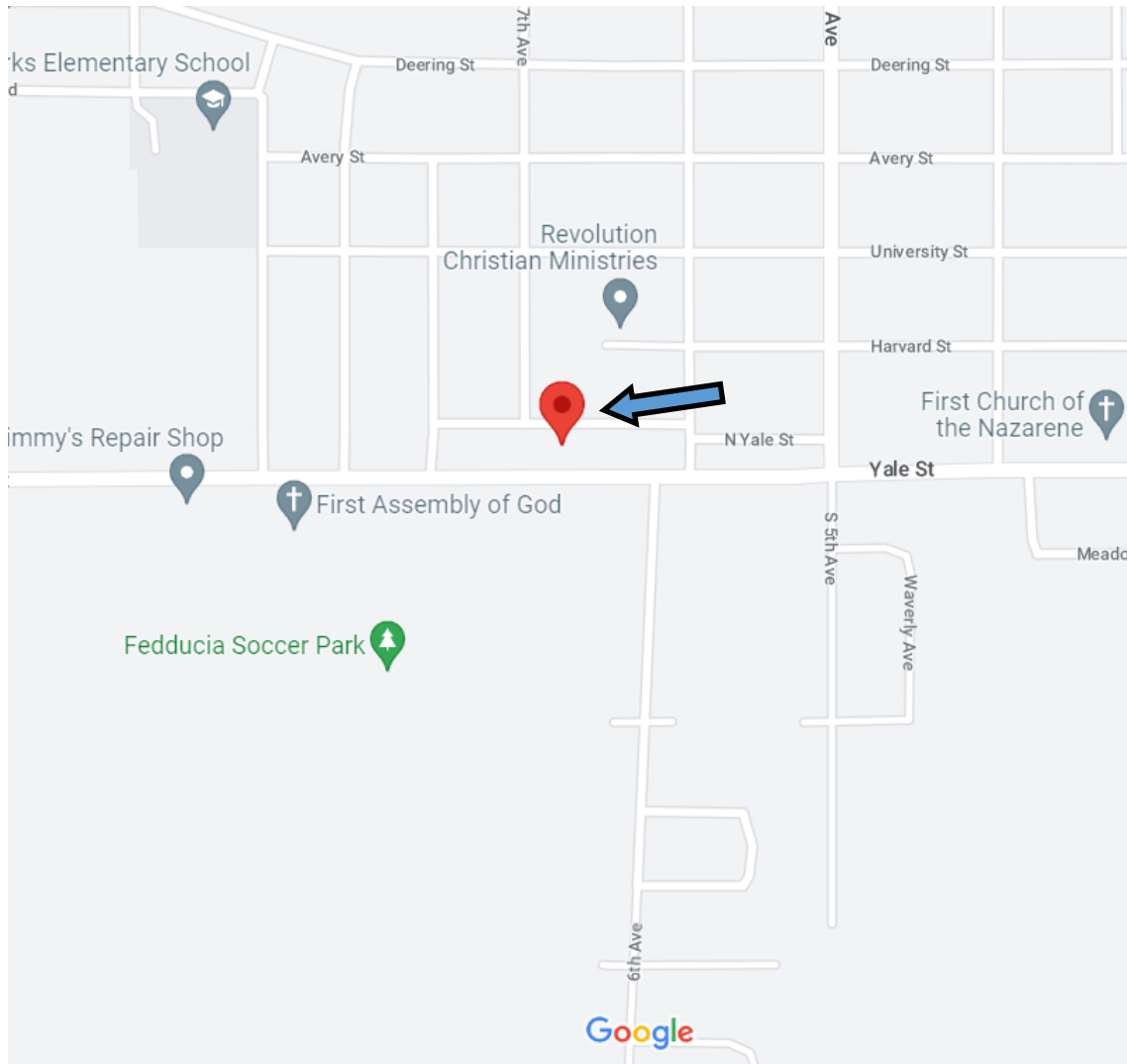


Expect More. Get More.

TomSmithLandandHomes.com

Information is believed to be accurate but not guaranteed.

DIRECTIONAL MAP



Address: 1111 North Yale Street Cleveland, MS 38732

Directions from the intersection of Hwy 8 and Hwy 61: Travel West onto Hwy 8 for approximately 1.0 miles. Turn left onto N. 5th Ave and in 0.9 miles turn right onto Harvard St. In 0.1 miles turn left at the first cross street onto 6th Ave, in 299 feet turn right onto N. Yale St, and in 492 feet the destination is on the left. [Google Map Directions](#)



Call me today!

TRACEY BELL, MANAGING BROKER
Tracey@TomSmithLand.com
662.441.2500 **office** | 662.719.4720 **cell**



TomSmithLandandHomes.com

Information is believed to be accurate but not guaranteed.