



HIDDEN LAKE PRESERVE

DOE COURT
NEW PORT RICHEY, FL 34654

Zeb Griffin, ALC

O: 877.518.5263 x379 | C: 352.630.7547
zeb.griffin@svn.com

Dean Saunders, ALC, CCIM

O: 877.518.5263 x306 | C: 863.287.8340
dean@svn.com



Sale Price **\$1,897,500**

OFFERING SUMMARY

Acreage: 589 Acres
Price / Acre: \$3,222
City: New Port Richey
County: Pasco
Property Type: Recreation
Video: [View Here](#)

PROPERTY OVERVIEW

This parcel would provide endless opportunities for those who enjoy the outdoors. Situated in an exceptional location, this tract can provide the West Pasco outdoor enthusiast with a recreational retreat minutes from home. Large parcels are few and far between in this general area, let alone placed on the market. There are tremendous hunting and fishing opportunities on the subject property. The tract is entirely wooded except for 'Hidden Lake.' Hidden Lake is roughly 48 ± acres that lie in the center of the property.

The bulk of this property consists of forested wetlands with some small pockets of oak hammocks and large pine islands scattered throughout. The tract houses a healthy amount of game due to the surrounding development on all sides. The property is being sold subject to a conservation easement.



SPECIFICATIONS & FEATURES

Land Types:

- Conservation Easement
- Hunting & Recreation Properties
- Waterfront

Lake Frontage / Water Features:

48 ± acre "Hidden Lake" located in the middle of the property

Water Source & Utilities:

Power Nearby

Road Frontage:

50 ± feet on Ridge Road and 50 ± feet on Doe Court

Nearest Point of Interest:

20 minutes to New Port Richey and less than 5 miles from the 18000 Acre Starkey Wilderness Preserve

Potential Recreational / Alt Uses:

Hunting deer, hogs, and turkey.

Land Cover:

Entirely wooded except for Hidden Lake



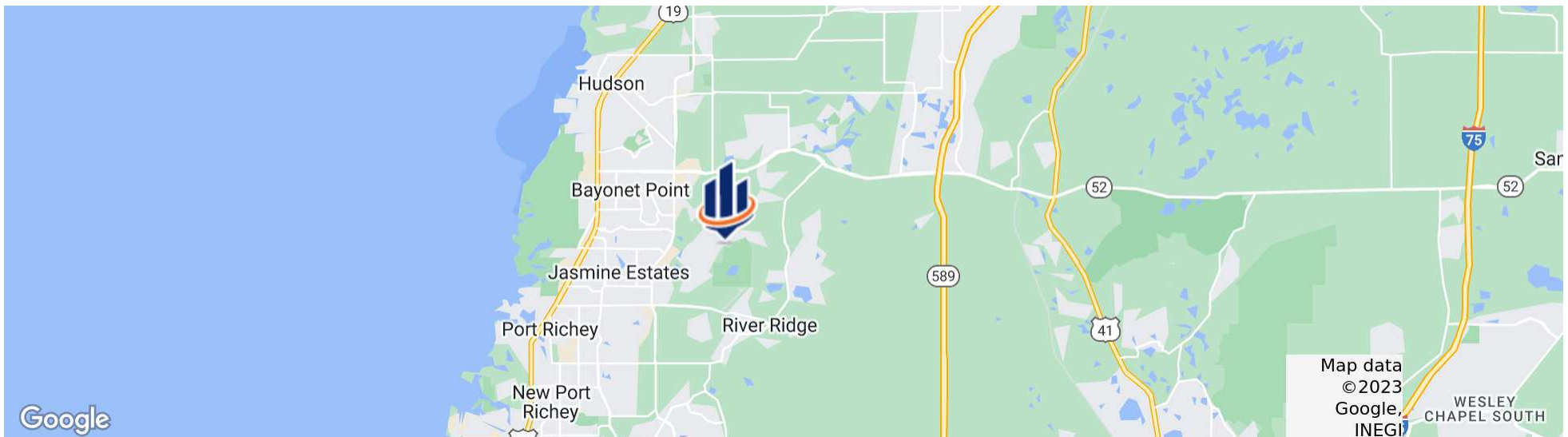
LOCATION & DRIVING DIRECTIONS

Parcel: 30-25-17-0000-00100-0011 & 19-25-17-0000-00100-0000

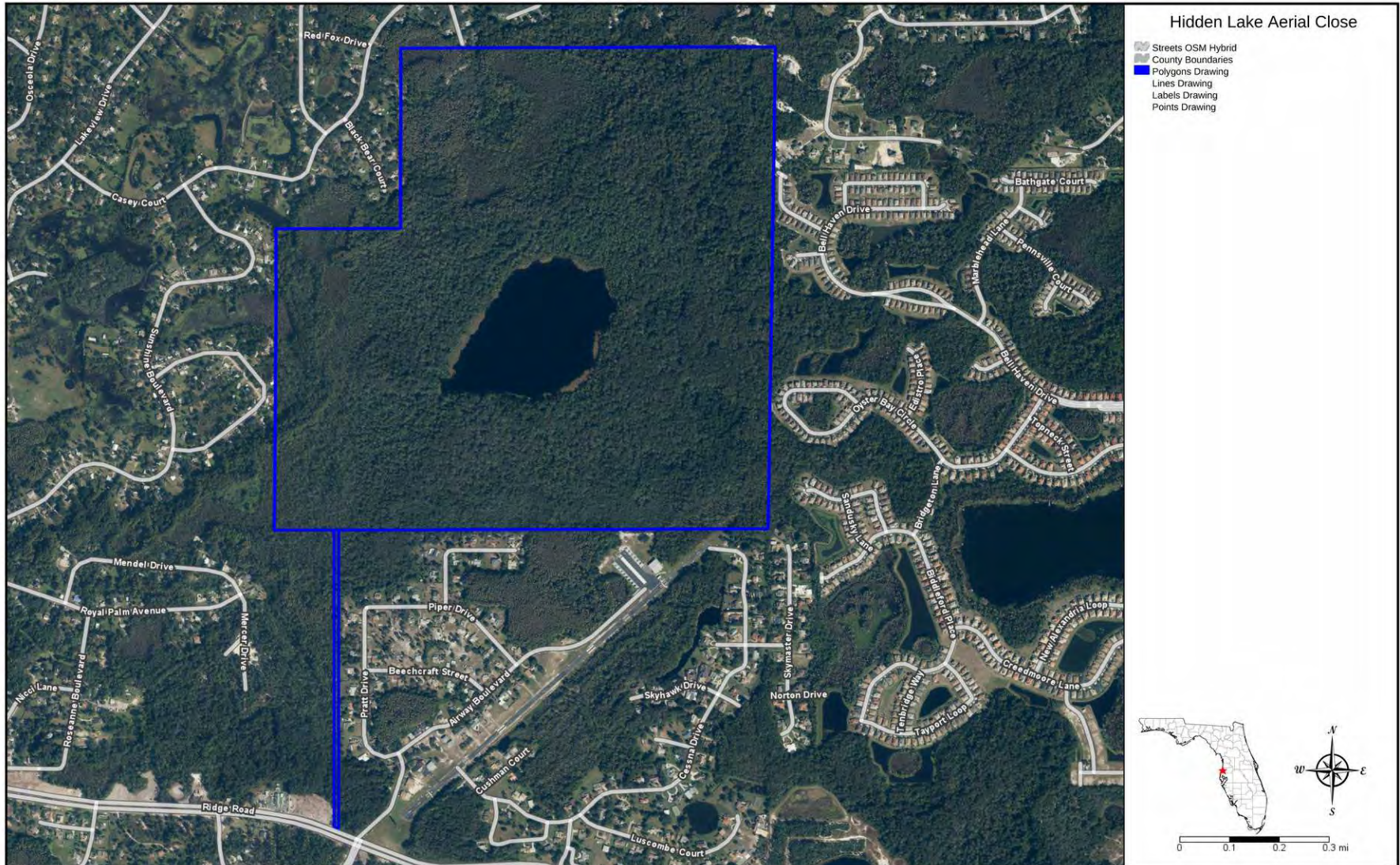
GPS: 28.3023256, -82.6432622

Driving Directions: Contact Zeb Griffin at [352] 630 7547

Showing Instructions: Contact Zeb Griffin at [352] 630 7547



Aerial Map













For more information visit SVNsaunders.com

HEADQUARTERS

1723 Bartow Road
Lakeland, Florida 33801
863.648.1528

ORLANDO

605 E Robinson Street, Suite 410
Orlando, Florida 32801
407.516.4300

NORTH FLORIDA

356 NW Lake City Avenue
Lake City, Florida 32055
386.438.5896

GEORGIA

125 N Broad Street, Suite 210
Thomasville, Georgia 31792
229.299.8600

©2022 SVN | Saunders Ralston Dantzler Real Estate. All SVN® Offices Independently Owned and Operated SVN | Saunders Ralston Dantzler Real Estate is a full-service land and commercial real estate brokerage with over \$4 billion in transactions representing buyers, sellers, investors, institutions, and landowners since 1996. We are recognized nationally as an authority on all types of land, including agriculture, ranch, recreation, residential development, and international properties. Our commercial real estate services include property management, leasing and tenant representation, valuation, business brokerage, and advisory and counseling services for office, retail, industrial, and multifamily properties. Our firm also features an auction company, forestry division, international partnerships, hunting lease management, and extensive expertise in conservation easements. Located in Florida and Georgia, we provide proven leadership and collaborative expertise backed by the strength of the SVN® global platform.

