

# Beautiful Bolivar County Home

808 S. Fifth Ave. Cleveland, MS 38732



This beautiful home is located in the center of Cleveland, Bolivar County, MS, and is the definition of Southern charm. Just shy of 2,300 sq ft., this home has hardwood floors, three large bedrooms and two bathrooms, a formal dining room and living room, and a spacious sun porch. Gorgeous, large windows fill this home, creating beautiful light that becomes a focal point. The fenced-in backyard has a spacious wooden deck perfect for entertaining and a large shop that has recently been repainted. The roof and HVAC have been recently replaced as well. Call Sarah Reese for your private showing today! (662)441-2500 or (662)641.6696.

Directions from the intersection of Hwy 8 and Hwy 61 Cleveland, MS: Travel West on Hwy 8 for approximately 1 mile, turn left onto N. Fifth Ave. In 0.8 miles the home will be on the right on the corner of N. Fifth and University Street.



*Call me today!*

**SARAH-REESE WRIGHT, REALTOR®**  
SarahReese@TomSmithLand.com  
662.441.2500 office | 662.641.6696 cell



**TomSmithLandandHomes.com**

Information is believed to be accurate but not guaranteed.



*Call me today!*

**SARAH-REESE WRIGHT, REALTOR®**  
SarahReese@TomSmithLand.com  
662.441.2500 office | 662.641.6696 cell



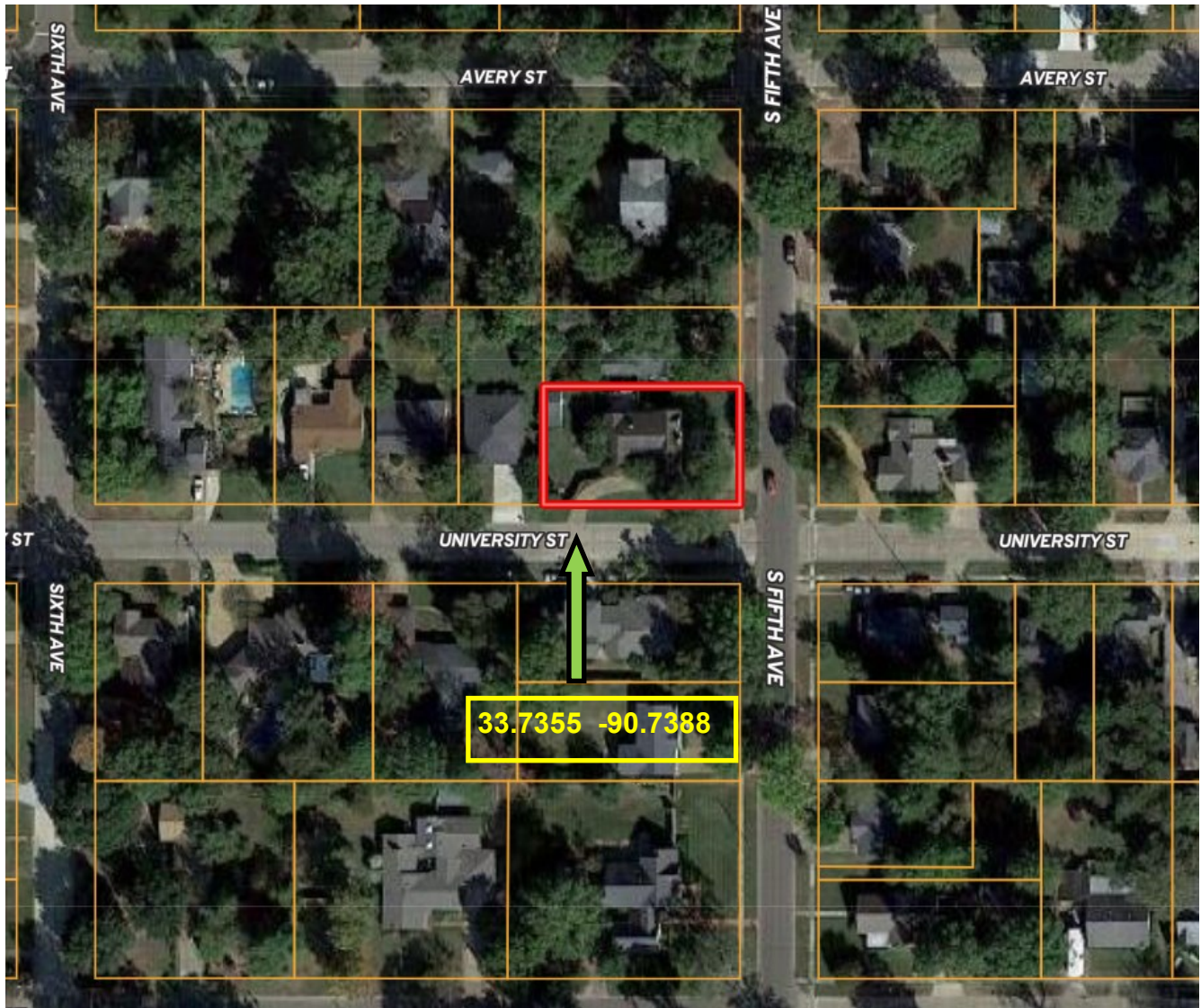
Expect More. Get More.



**TomSmithLandandHomes.com**

Information is believed to be accurate but not guaranteed.

# AERIAL MAP



[Click for Interactive Map](#)

*Call me today!*

**SARAH-REESE WRIGHT**, REALTOR®  
SarahReese@TomSmithLand.com  
662.441.2500 office | 662.641.6696 cell



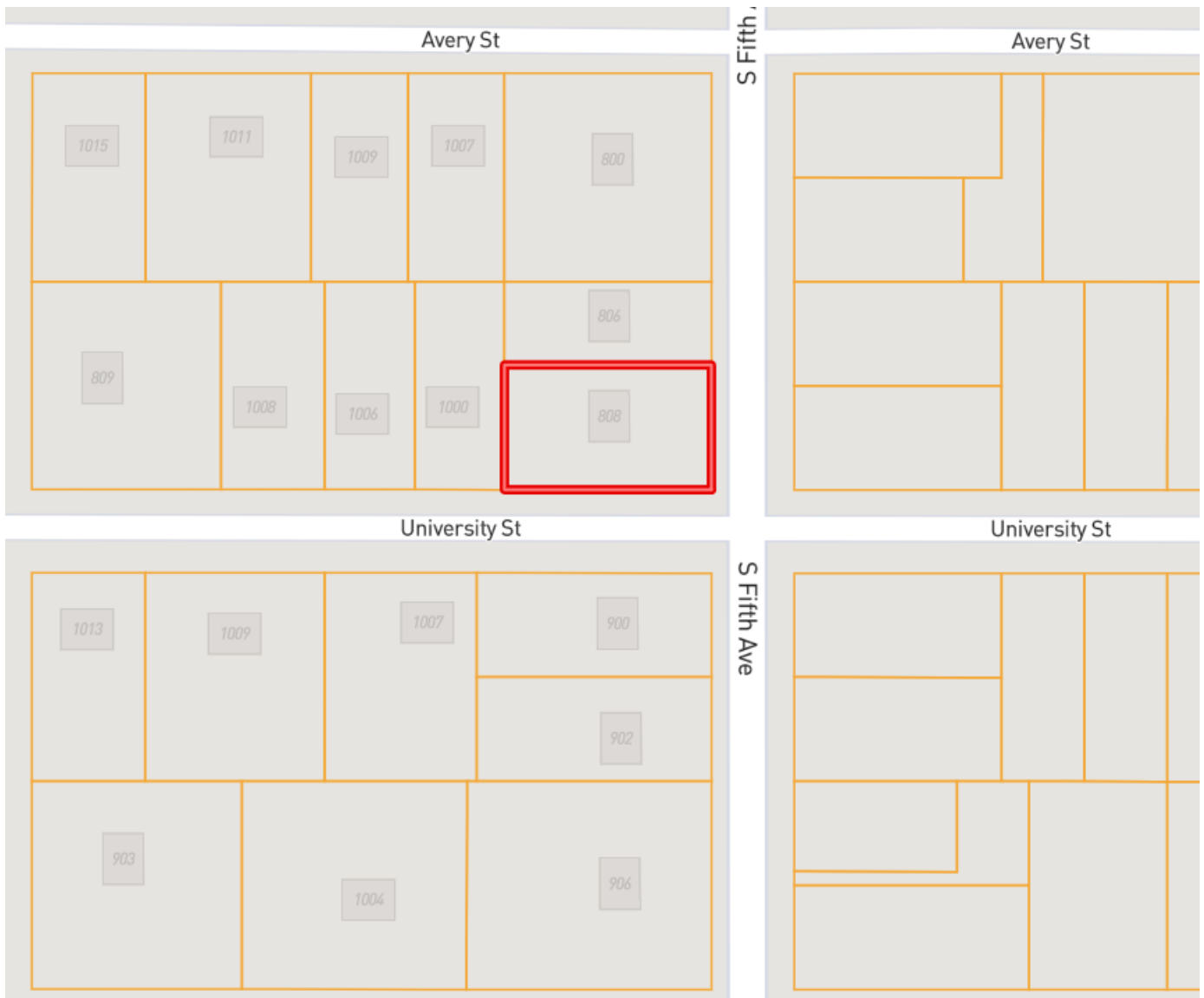
Expect More. Get More.



**TomSmithLandandHomes.com**

Information is believed to be accurate but not guaranteed.

# OWNERSHIP MAP



*Call me today!*

**SARAH-REESE WRIGHT**, REALTOR®  
SarahReese@TomSmithLand.com  
662.441.2500 office | 662.641.6696 cell



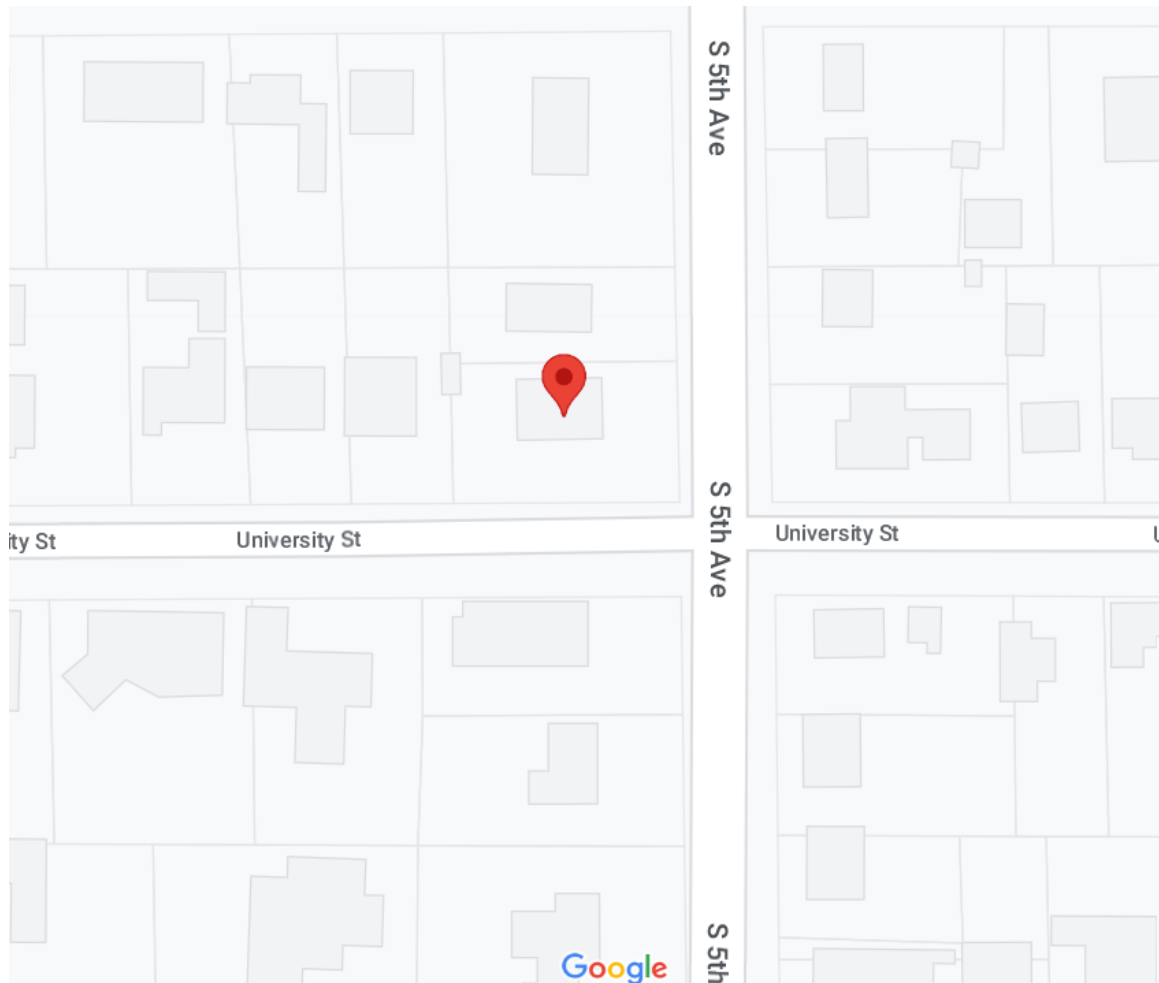
Expect More. Get More.



**TomSmithLandandHomes.com**

Information is believed to be accurate but not guaranteed.

# DIRECTIONAL MAP



## 808 S. Fifth Ave. Cleveland, MS 38732

**Directions from the intersection of Hwy 8 and Hwy 61 Cleveland, MS:** Travel West on Hwy 8 for approximately 1 mile, turn left onto N. Fifth Ave. In 0.8 miles the home will be on the right on the corner of N. Fifth and University Street. [Click for Google Maps.](#)



*Call me today!*

**SARAH-REESE WRIGHT, REALTOR®**  
SarahReese@TomSmithLand.com  
662.441.2500 office | 662.641.6696 cell



**TomSmithLandandHomes.com**

Information is believed to be accurate but not guaranteed.