

SPORTSMAN'S PARADISE

28± Acres in Catahoula Parish, LA



000 Bush Road
Sicily Island, LA 71368

\$228,000

Fish, bucks, and birds! That is what you will find when you see this 28+/- acre sportsman's dream on Deer Creek in Catahoula Parish, LA. Located just 15 minutes from Sicily Island, LA, this fantastic property has over 230 feet of water frontage and a common border with Sicily Island WMA. The property has access to a private boat ramp on Deer Creek and allows entry into miles of some of the state's best fishing and duck hunting. The Sicily Island and Boeuf River WMAs provide thousands of acres of hunting opportunities, from the upland game and turkeys to whitetail deer and hogs. This fantastic property allows access to the Boeuf River from Deer Creek, with the Ouachita River joining the Boeuf River just 2.5 miles downstream, while the Turkey Creek spillway is just 3.5 miles north. The recreational opportunities are endless. This excellent property sitting high above the creek has power and multiple campsite locations. You can build a permanent structure, bring your camper and boat, and be ready to hunt or fish in minutes. Call Clif today to schedule your private showing!

[Click for Directions](#)

Call me today!

CLIF CANNON, REALTOR®
Clif@TomSmithLand.com
601.990.5070 **office** | 601.565.1070 **cell**



Expect More. Get More.



TomSmithLandandHomes.com

Information is believed to be accurate but not guaranteed.



Call me today!

CLIF CANNON, REALTOR®

Clif@TomSmithLand.com

601.990.5070 **office** | 601.565.1070 **cell**



Expect More. Get More.

TomSmithLandandHomes.com

Information is believed to be accurate but not guaranteed.



Call me today!

CLIF CANNON, REALTOR®

Clif@TomSmithLand.com

601.990.5070 **office** | 601.565.1070 **cell**



Expect More. Get More.

TomSmithLandandHomes.com

Information is believed to be accurate but not guaranteed.

AERIAL MAP



Interactive Map

Call me today!

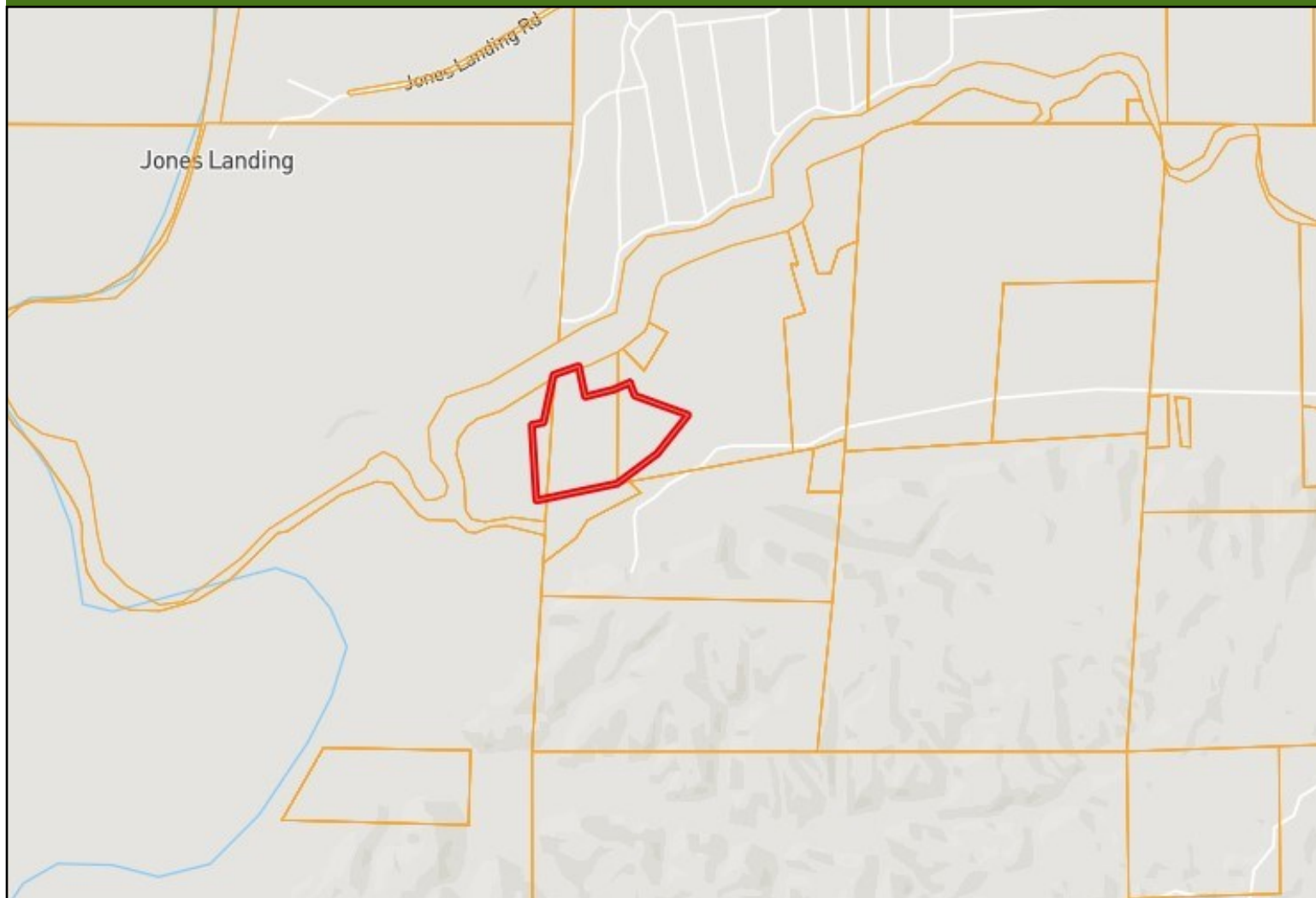
CLIF CANNON, REALTOR®
Clif@TomSmithLand.com
601.990.5070 **office** | 601.565.1070 **cell**



TomSmithLandandHomes.com

Information is believed to be accurate but not guaranteed.

OWNERSHIP MAP



Call me today!

CLIF CANNON, REALTOR®

Clif@TomSmithLand.com

601.990.5070 **office** | 601.565.1070 **cell**



Expect More. Get More.

TomSmithLandandHomes.com

Information is believed to be accurate but not guaranteed.

TOPOGRAPHIC MAP



Call me today!

CLIF CANNON, REALTOR®

Clif@TomSmithLand.com

601.990.5070 **office** | 601.565.1070 **cell**

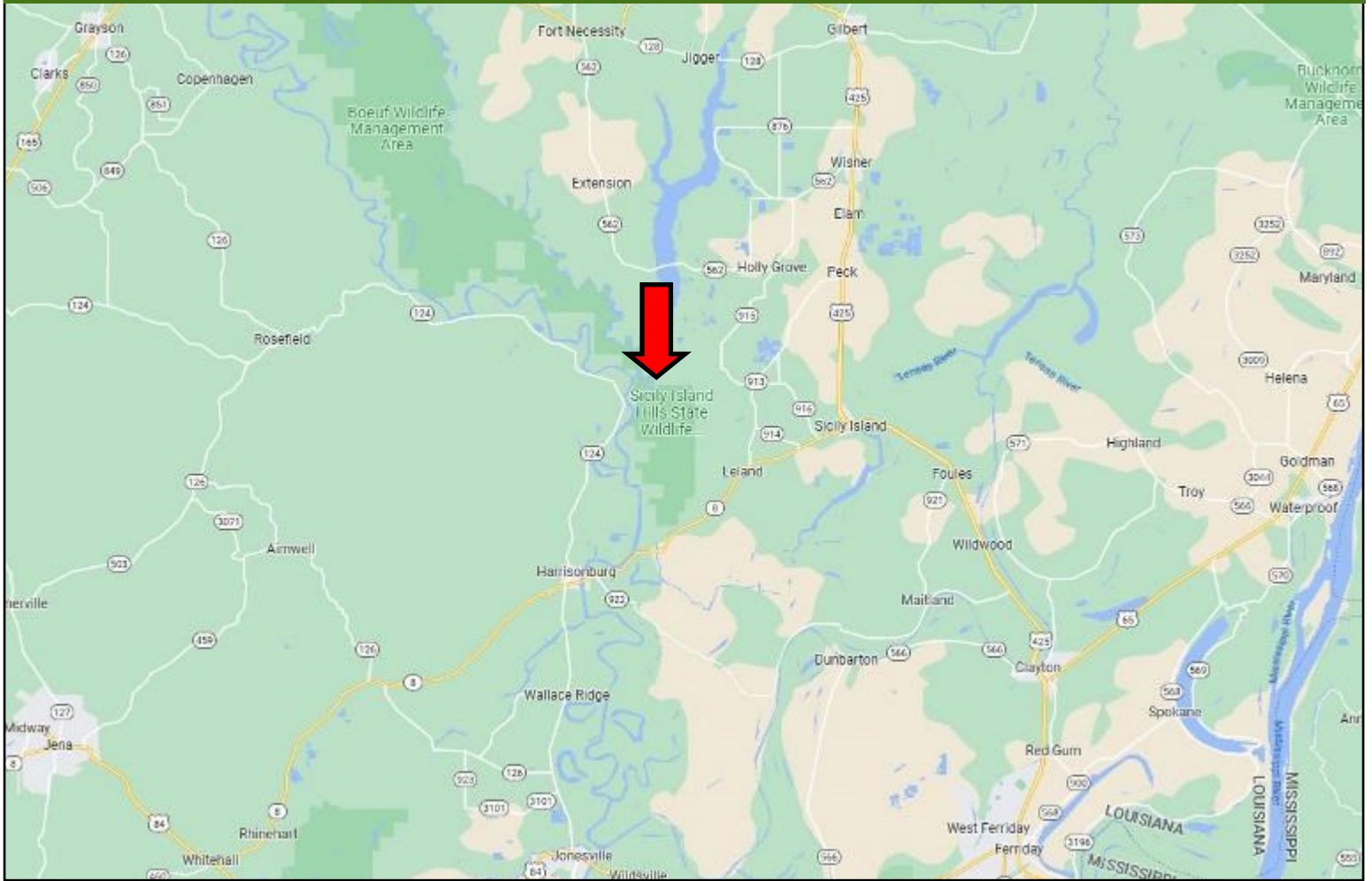


Expect More. Get More.

TomSmithLandandHomes.com

Information is believed to be accurate but not guaranteed.

DIRECTIONAL MAP



Directions from the intersection of LA-465 and LA-8 in Sicily Island, LA: Travel west on LA-8 for 1.2 miles. Turn right onto LA-916 and travel for 2.8 miles. Turn left onto LA-915 and travel for .8 miles. Turn left onto LA-913 and travel for 240 ft. Turn right onto LA-915 and travel for 3.2 miles. Turn right onto Bend Road and travel for .24 miles. The property will be on the left. [Click for Directions](#)

Call me today!

CLIF CANNON, REALTOR®
Clif@TomSmithLand.com
601.990.5070 **office** | 601.565.1070 **cell**



TomSmithLandandHomes.com

Information is believed to be accurate but not guaranteed.