

# RECREATIONAL TIMBER TRACT

56+/- Acres in Oktibbeha County, MS



**\$224,000**

Look at this 56+/- acre recreational timberland tract conveniently located in West Oktibbeha County and four miles North of Sturgis, MS. This tract consists of a predominate pine plantation approximately 30 +/- years old and has been thinned once. You will also find a few scattered hardwoods on the property's southern border and along the live creek. This property also features paved frontage on Sturgis Maben Road and a potential home or cabin site. Utilities are available on Sturgis Maben Road. Call Harper Day to schedule your private showing!

**Directions from Sturgis, MS:** Travel North on Sturgis Maben Road for 4.3 Miles. The property will be on your left. [Google Map Link](#)



*Call me today!*

**HARPER DAY, REALTOR®**  
Harper@TomSmithLand.com  
662.268.6333 office | 662.694.9751 cell



**TomSmithLandandHomes.com**

Information is believed to be accurate but not guaranteed.





*Call me  
today!*

**HARPER DAY**, REALTOR®

Harper@TomSmithLand.com

662.268.6333 **office** | 662.694.9751 **cell**



Expect More. Get More.

**TomSmithLandandHomes.com**

Information is believed to be accurate but not guaranteed.







*Call me  
today!*

**HARPER DAY**, REALTOR®

Harper@TomSmithLand.com

662.268.6333 **office** | 662.694.9751 **cell**



Expect More. Get More.

**TomSmithLandandHomes.com**

Information is believed to be accurate but not guaranteed.







*Call me today!*

**HARPER DAY, REALTOR®**

Harper@TomSmithLand.com

662.268.6333 **office** | 662.694.9751 **cell**



Expect More. Get More.

**TomSmithLandandHomes.com**

Information is believed to be accurate but not guaranteed.







*Call me today!*

**HARPER DAY, REALTOR®**

Harper@TomSmithLand.com

662.268.6333 **office** | 662.694.9751 **cell**



Expect More. Get More.

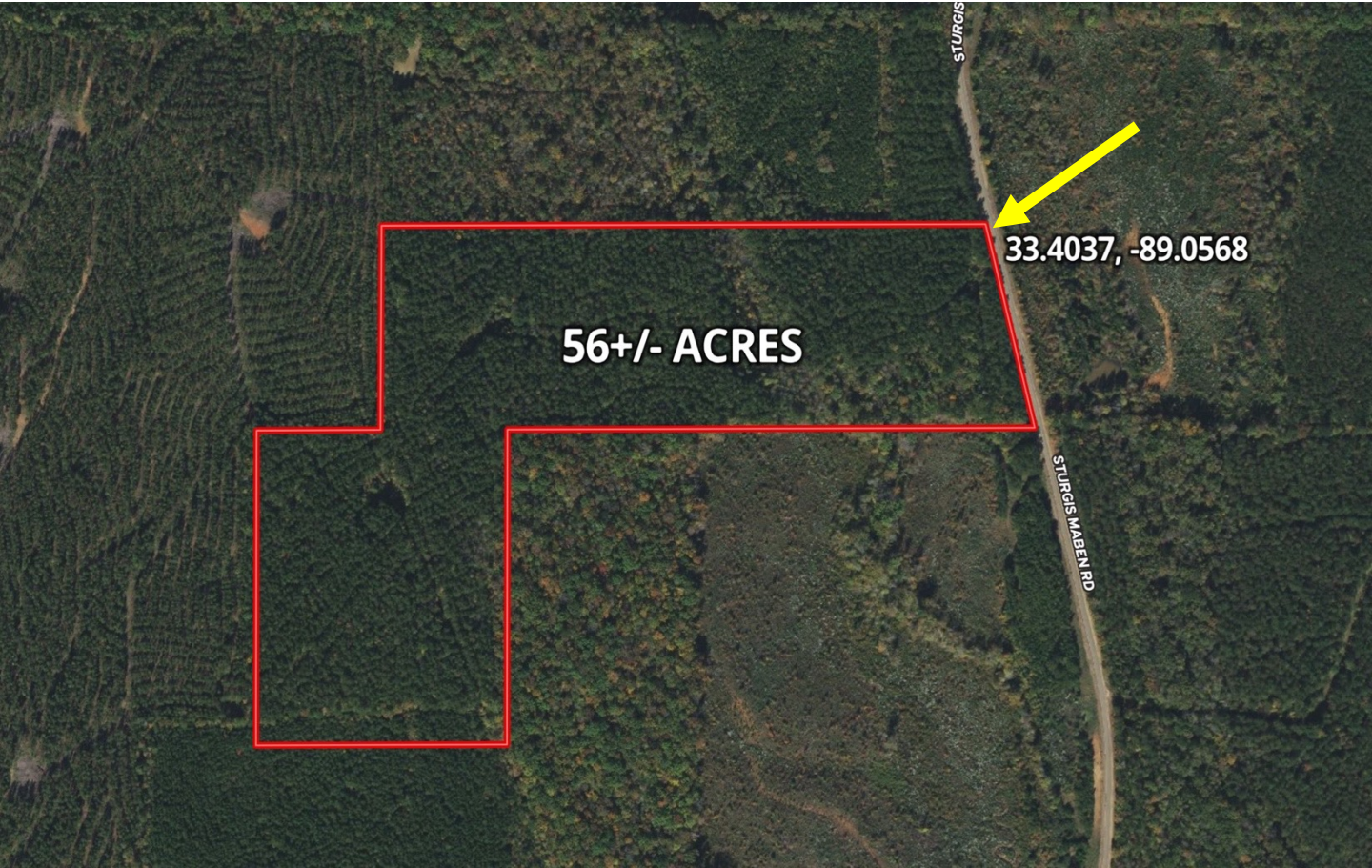
**TomSmithLandandHomes.com**

Information is believed to be accurate but not guaranteed.





# Aerial Map



[CLICK HERE FOR AN INTERACTIVE MAP](#)

*Call me today!*

**HARPER DAY**, REALTOR®

Harper@TomSmithLand.com

662.268.6333 **office** | 662.694.9751 **cell**



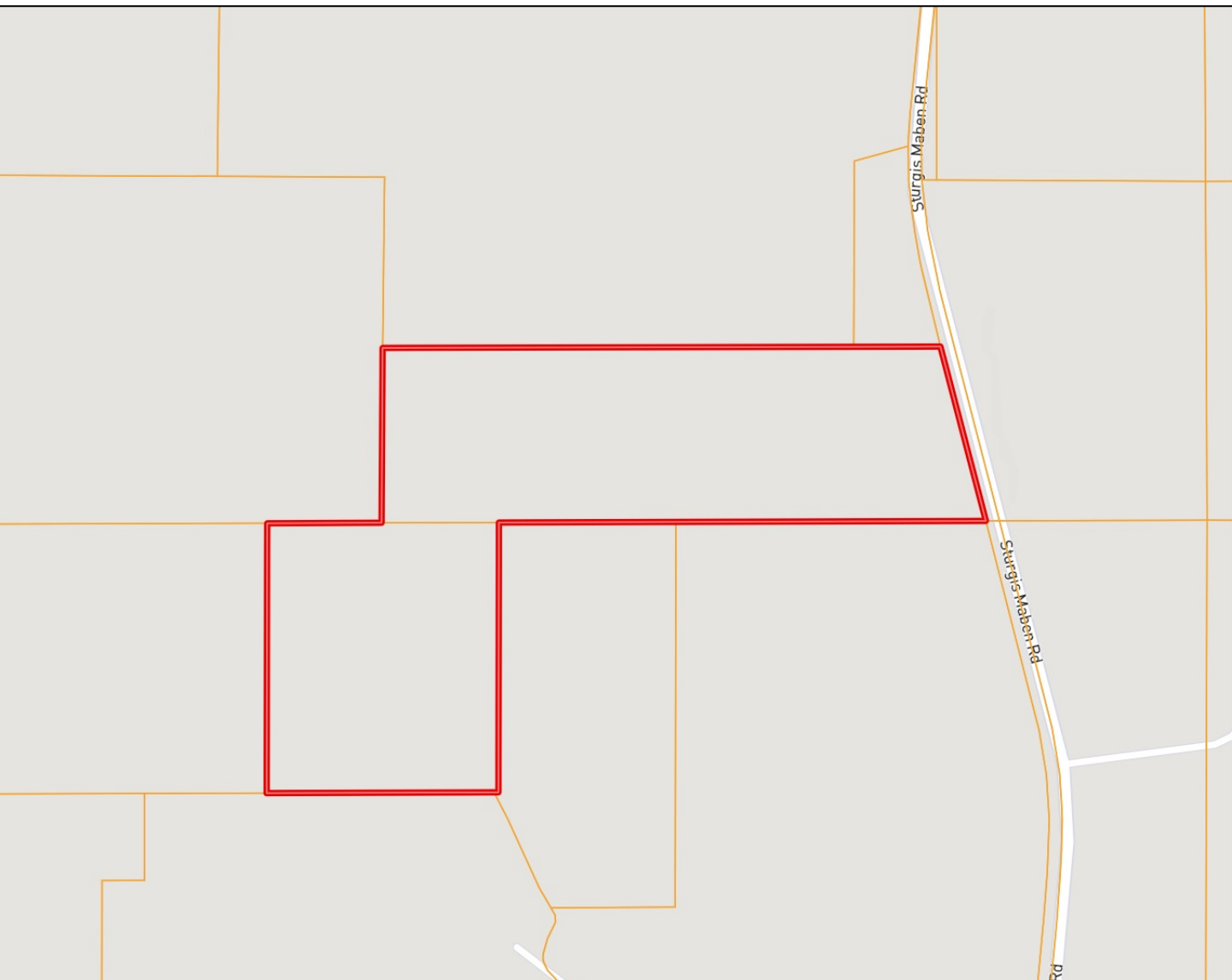
Expect More. Get More.

**TomSmithLandandHomes.com**

Information is believed to be accurate but not guaranteed.



# Ownership Map



*Call me  
today!*

**HARPER DAY**, REALTOR®

Harper@TomSmithLand.com

662.268.6333 **office** | 662.694.9751 **cell**



Expect More. Get More.

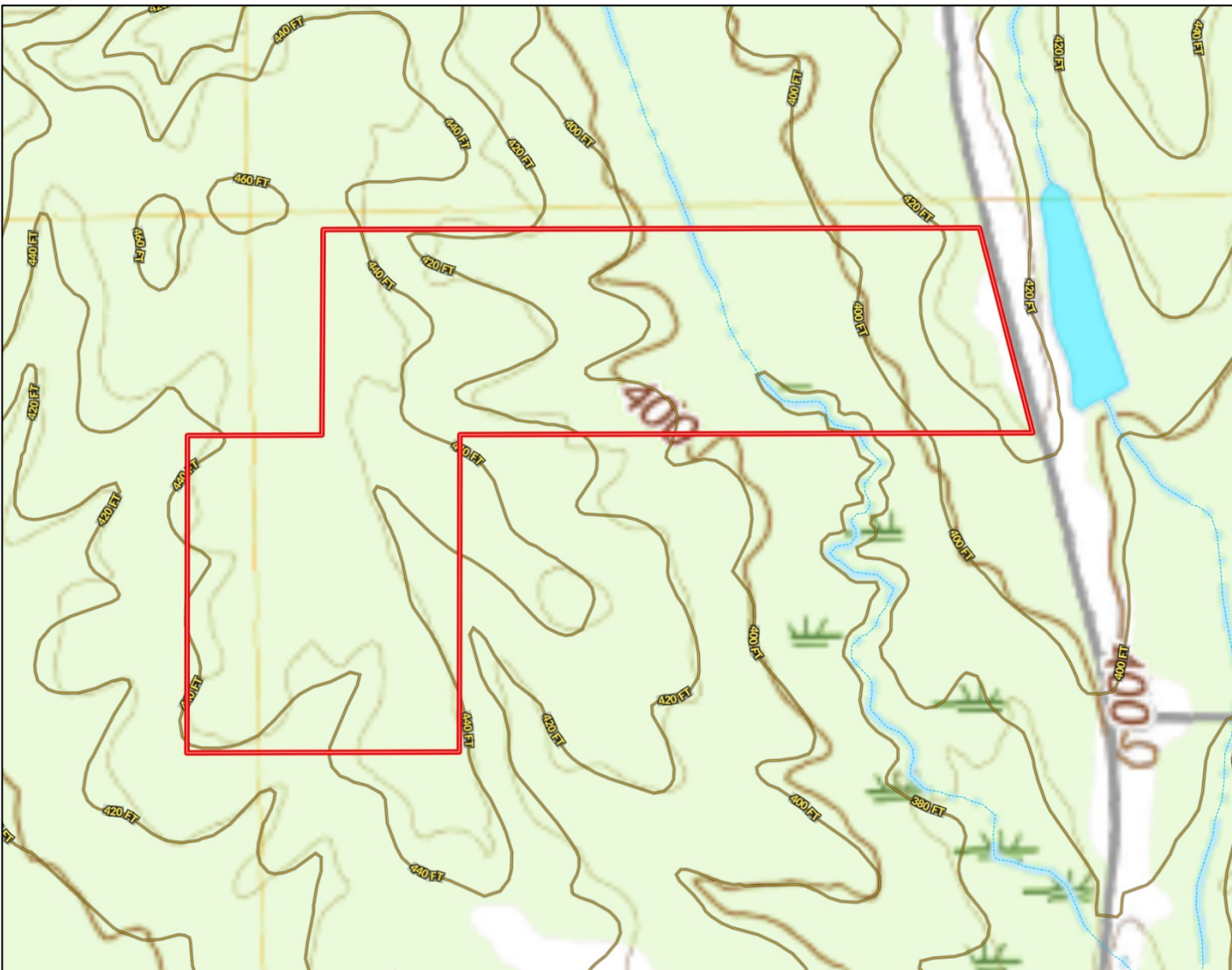
**TomSmithLandandHomes.com**

Information is believed to be accurate but not guaranteed.





# Topographic Map



*Call me today!*

**HARPER DAY**, REALTOR®

Harper@TomSmithLand.com

662.268.6333 **office** | 662.694.9751 **cell**



Expect More. Get More.

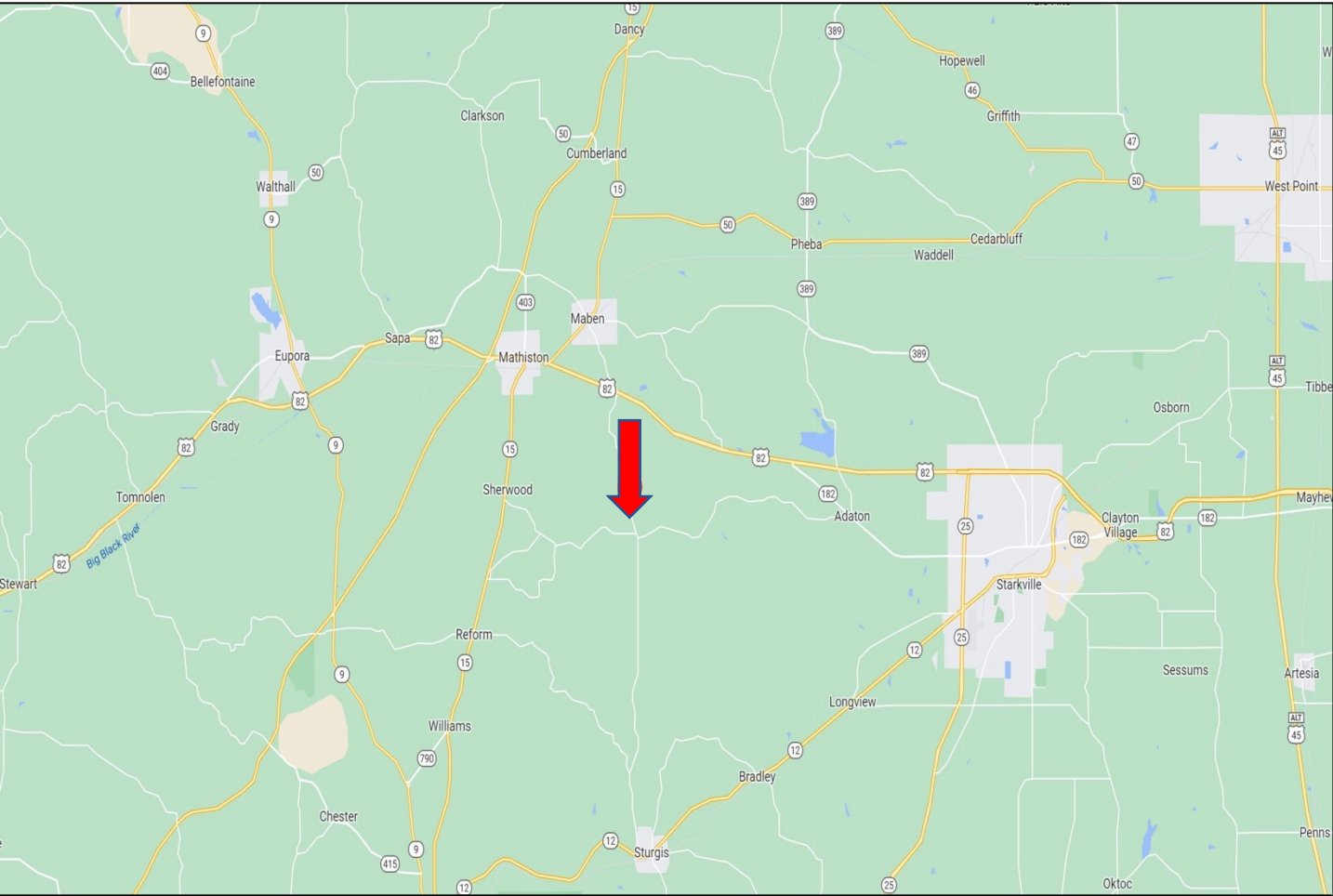


**TomSmithLandandHomes.com**

Information is believed to be accurate but not guaranteed.



# Directional Map



*Directions from Sturgis, MS: Travel North on Sturgis Maben Road for 4.3 Miles. The property will be on your left. [Google Map Link](#)*



*Call me today!*

**HARPER DAY, REALTOR®**  
Harper@TomSmithLand.com  
662.268.6333 office | 662.694.9751 cell



**TomSmithLandandHomes.com**

Information is believed to be accurate but not guaranteed.

