

Recreational / Hunting Tract 76+/- Acres in Monroe County, MS

\$107,999



Have you been searching for a place to hunt or somewhere to have fun on the weekends? This 76+/- acres in Monroe County, MS, is located right off Highway 8, just 15 minutes from Aberdeen. This property consists of a good stand of mixed timber and has Wilson Creek running right through the property. Deer and wildlife signs were present throughout the property upon initial inspection. This property also has partial ownership of a stocked 1.5+/- acre lake. The creek also has a beaver pond that is loaded with bass as well. To schedule, a private showing, call or text Walker!

Directions from Aberdeen MS: Head south on North Hickory Street towards West Commerce Street for 260 feet. Then turn left onto West Commerce Street for 381 feet. After that the road name changes to East Commerce Street for .9 miles. Then in .2 miles bear right onto Highway 45 South. Then in 2 miles turn left onto US-45 S / MS-25 / MS-8 / Highway 45 S. Then in 1.6 miles take the ramp on the right for MS-25 North / MS-8 East and head towards Amory / Gattman. Then turn right onto MS-8 / Highway 8 East. In 7.3 miles the property will be on your right.



Call me today!

WALKER TRANUM, REALTOR®
Walker@TomSmithHomes.com
662.268.6333 office | 662.769.1442 cell



TomSmithLandandHomes.com

Information is believed to be accurate but not guaranteed.



Call me today!

WALKER TRANUM, REALTOR®
Walker@TomSmithHomes.com
662.268.6333 office | 662.769.1442 cell



LandReport
2011-2022
AMERICA'S
BEST
BROKERAGES

TomSmithLandandHomes.com

Information is believed to be accurate but not guaranteed.



Call me today!

WALKER TRANUM, REALTOR®
Walker@TomSmithHomes.com
662.268.6333 office | 662.769.1442 cell



TomSmithLandandHomes.com

Information is believed to be accurate but not guaranteed.



Call me today!

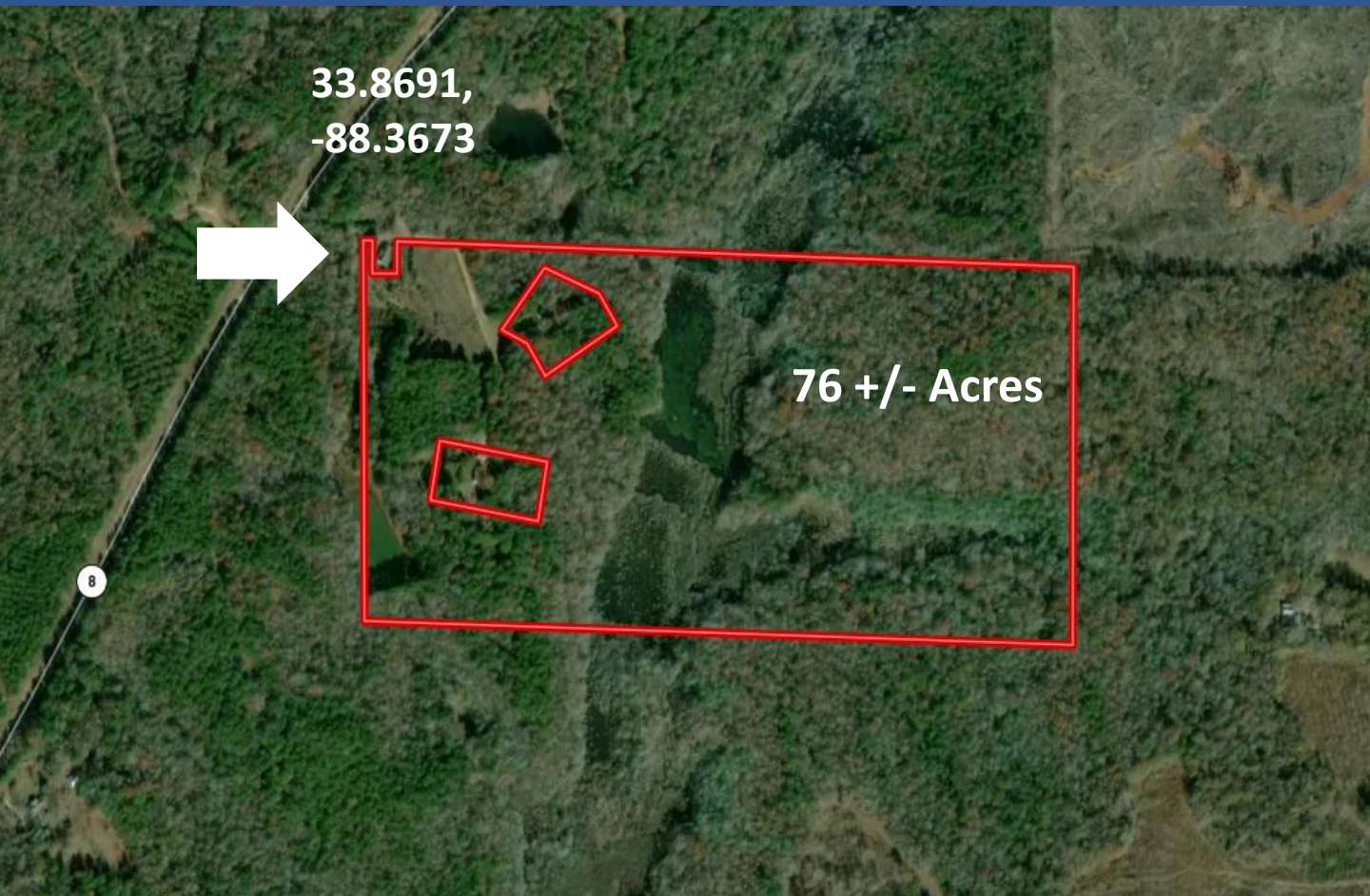
WALKER TRANUM, REALTOR®
Walker@TomSmithHomes.com
662.268.6333 office | 662.769.1442 cell



TomSmithLandandHomes.com

Information is believed to be accurate but not guaranteed.

Aerial Map



[Click Here for Interactive Link](#)



Call me today!

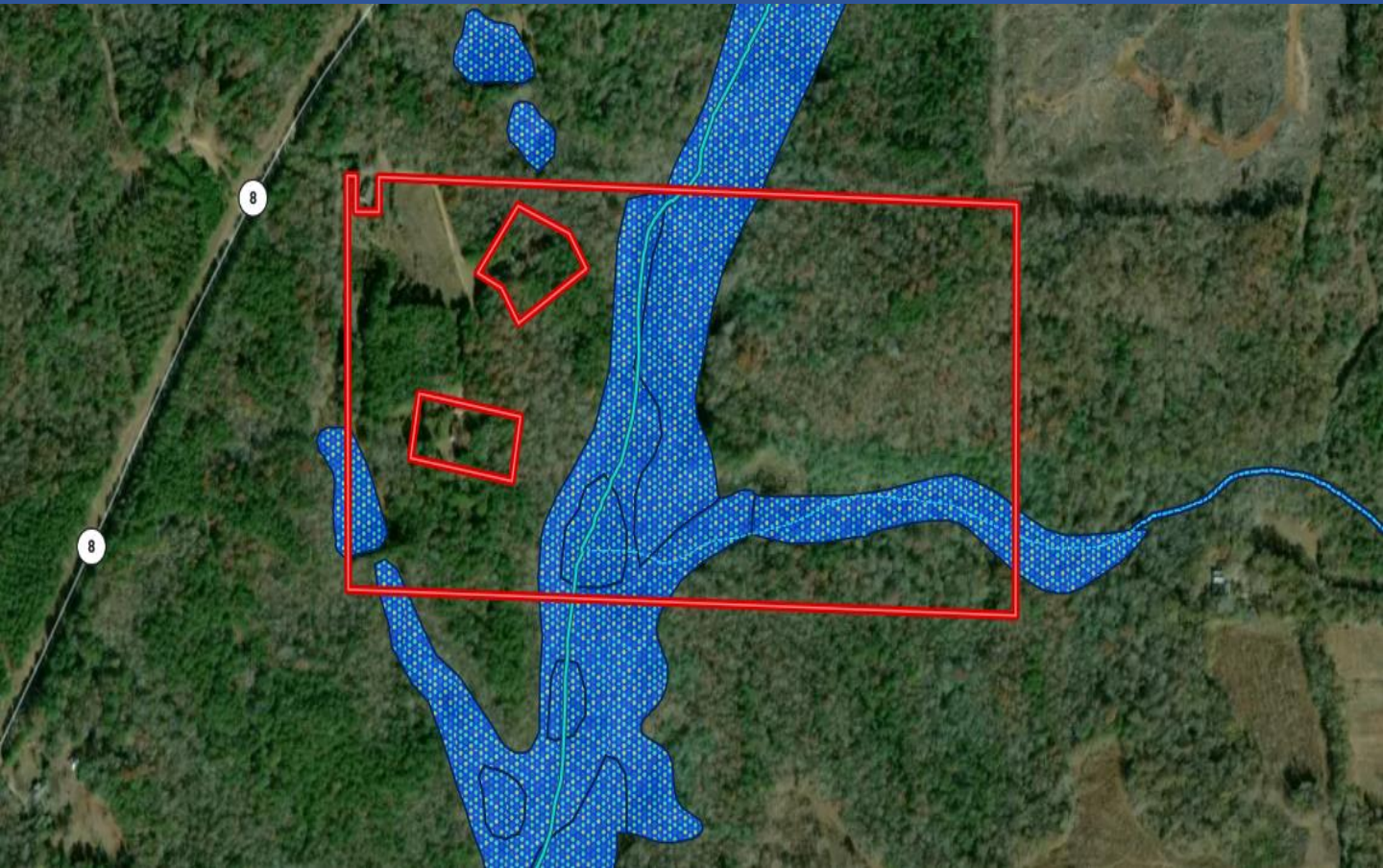
WALKER TRANUM, REALTOR®
Walker@TomSmithHomes.com
662.268.6333 office | 662.769.1442 cell



TomSmithLandandHomes.com

Information is believed to be accurate but not guaranteed.

Flood Map



Call me today!

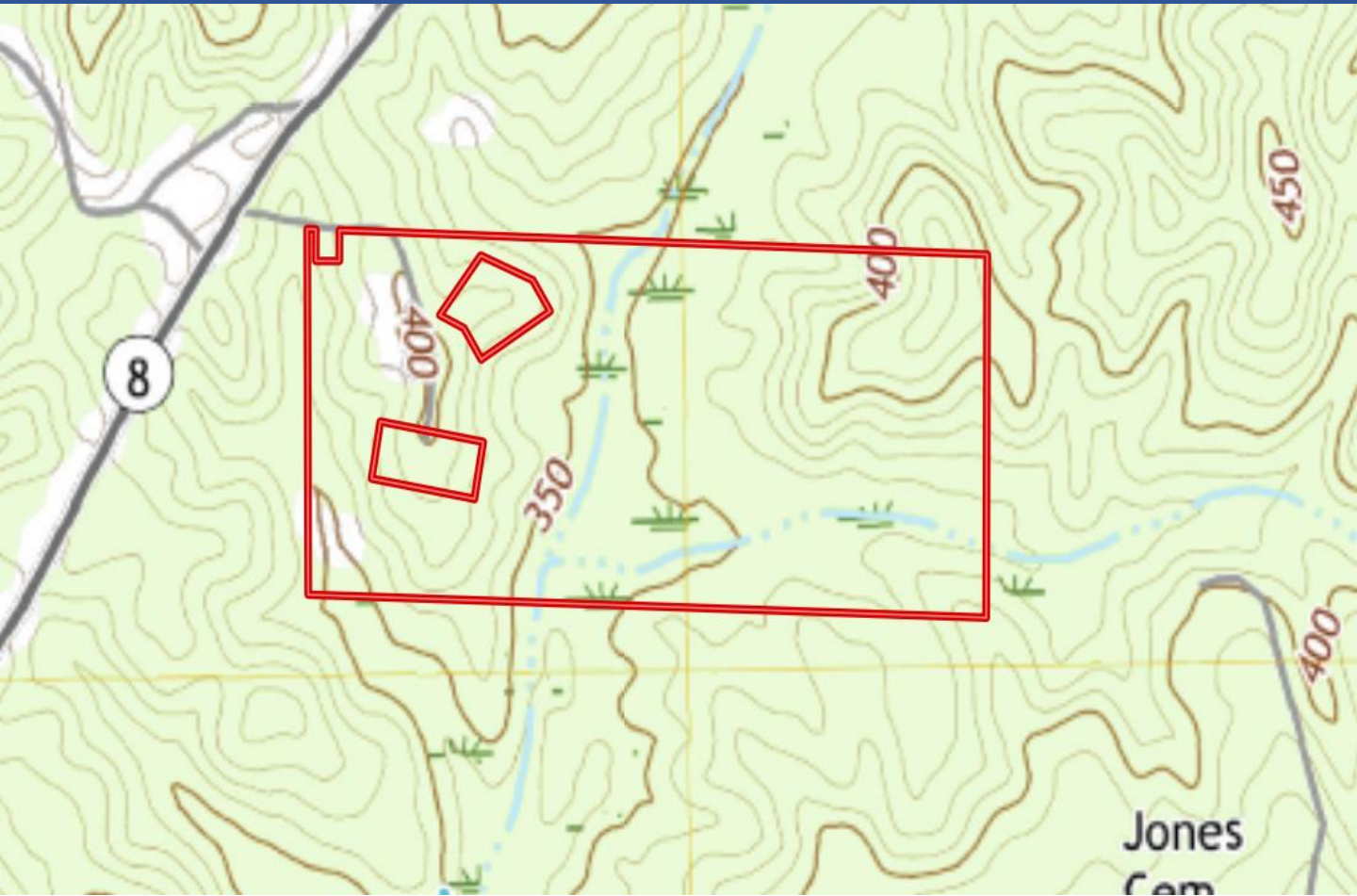
WALKER TRANUM, REALTOR®
Walker@TomSmithHomes.com
662.268.6333 office | 662.769.1442 cell



TomSmithLandandHomes.com

Information is believed to be accurate but not guaranteed.

Topography Map



Call me today!

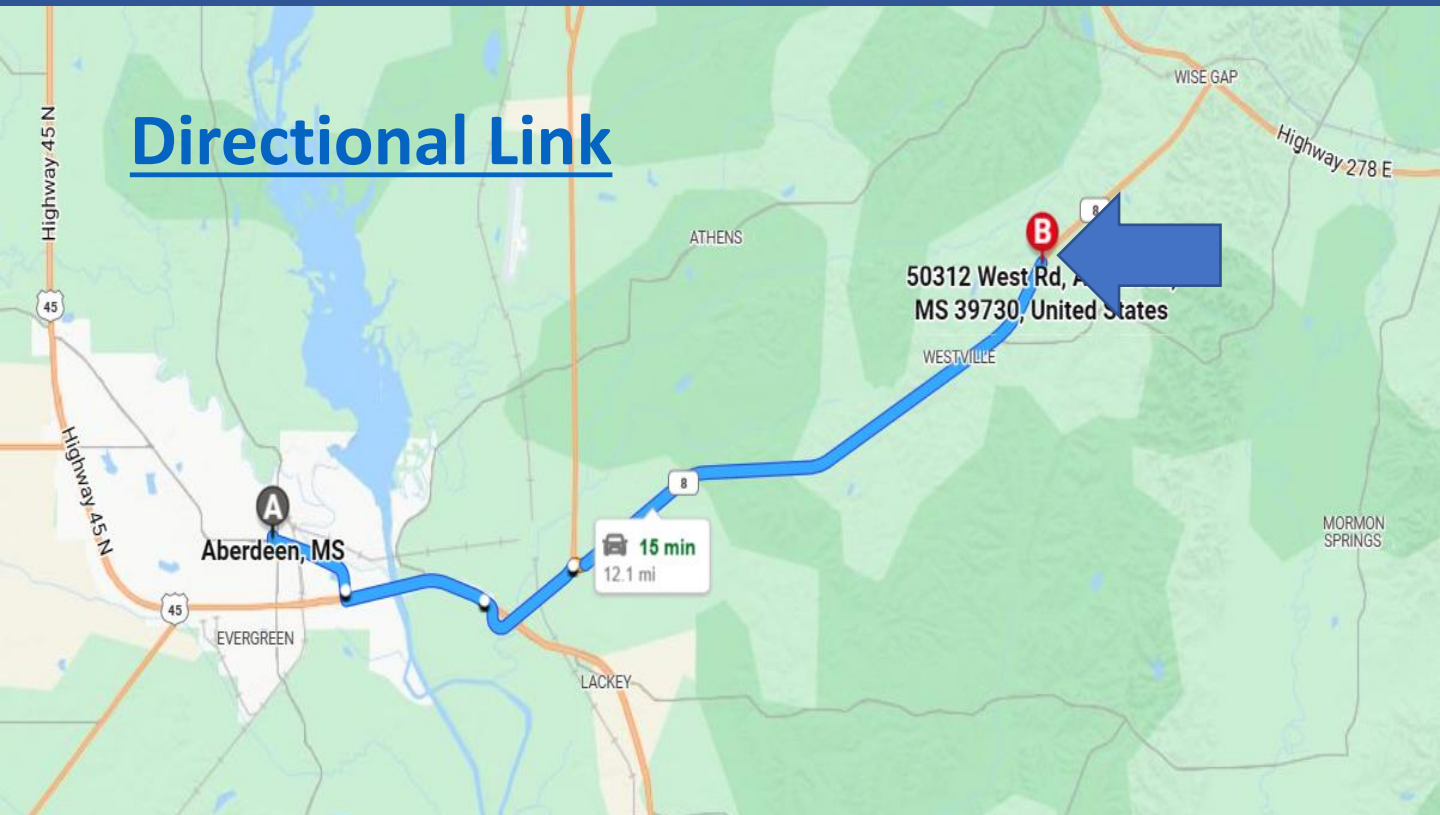
WALKER TRANUM, REALTOR®
Walker@TomSmithHomes.com
662.268.6333 office | 662.769.1442 cell



TomSmithLandandHomes.com

Information is believed to be accurate but not guaranteed.

Directional Map



Directional Link

50312 West Rd, MS 39730, United States

15 min
12.1 mi

Directions from Aberdeen MS: Head south on North Hickory Street towards West Commerce Street for 260 feet. Then turn left onto West Commerce Street for 381 feet. After that the road name changes to East Commerce Street for .9 miles. Then in .2 miles bear right onto Highway 45 South. Then in 2 miles turn left onto US-45 S / MS-25 / MS-8 / Highway 45 S. Then in 1.6 miles take the ramp on the right for MS-25 North / MS-8 East and head towards Amory / Gattman. Then turn right onto MS-8 / Highway 8 East. In 7.3 miles the property will be on your right.



Call me today!

WALKER TRANUM, REALTOR®
Walker@TomSmithHomes.com
662.268.6333 office | 662.769.1442 cell



TomSmithLandandHomes.com

Information is believed to be accurate but not guaranteed.