

# THREE BEDROOM, TWO BATHROOM HOME IN SUNFLOWER COUNTY, MS



**Address: 339 S. Chester Ave. Ruleville, MS 38771**

Take a look at this 1,660 sqft, three bedroom, two bath home located in Ruleville, Sunflower County, MS. This home features hardwood floors throughout most of the rooms, has an adorable kitchen with a must-have Viking gas range, and vent a hood. The home also has a shop in the fenced-in backyard with electricity and a screened-in porch. Call Tracey today for your private showing! (662)441-2500

**Directions from the intersection of Hwy 8 and Hwy 61 Cleveland, MS:** Travel East on Hwy 8 for 9.3 miles and take a slight right onto W. Floyce St. In 0.4 miles turn right onto S. Front Ave. In 0.3 miles turn left onto W. Sunflower St and continue 0.3 miles, then turn left onto Sylvia St. Travel 203 feet and turn left onto S. Chester Ave. After 338 ft the house will be on the left.



*Call me today!*

**TRACEY BELL**, MANAGING BROKER  
Tracey@TomSmithLand.com  
662.441.2500 office | 662.719.4720 cell



**TomSmithLandandHomes.com**

Information is believed to be accurate but not guaranteed.





*Call me today!*

**TRACEY BELL**, MANAGING BROKER  
 Tracey@TomSmithLand.com  
 662.441.2500 **office** | 662.719.4720 **cell**



**TomSmithLandandHomes.com**

Information is believed to be accurate but not guaranteed.





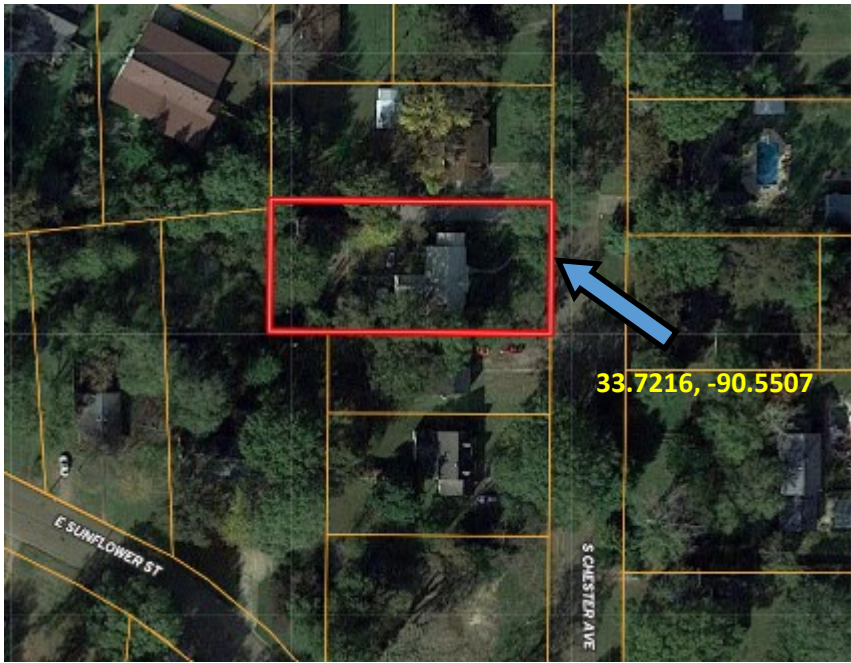
*Call me today!*

**TRACEY BELL**, MANAGING BROKER  
 Tracey@TomSmithLand.com  
 662.441.2500 **office** | 662.719.4720 **cell**



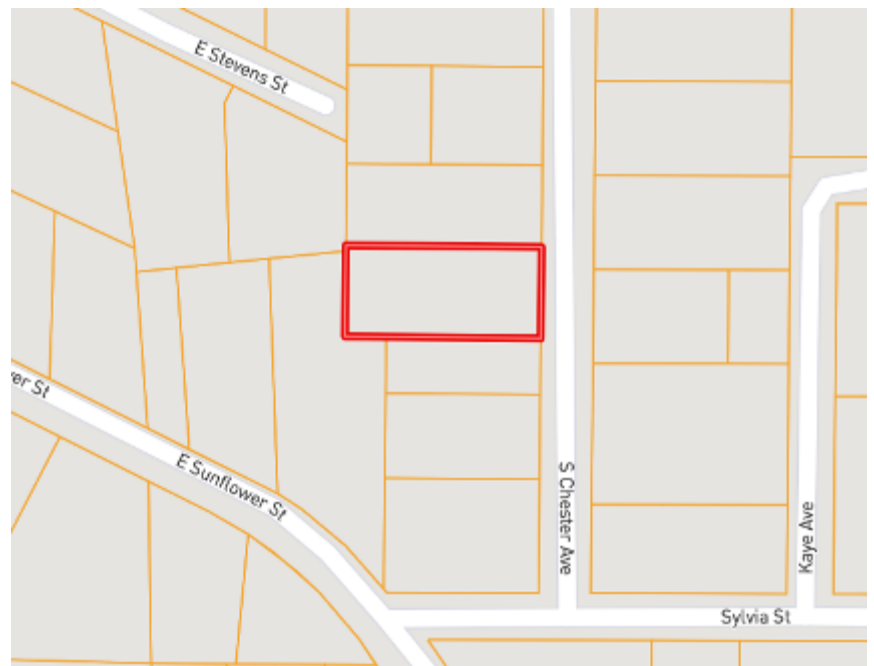
**TomSmithLandandHomes.com**

Information is believed to be accurate but not guaranteed.



AERIAL MAP

OWNERSHIP  
MAP



Click for Interactive Map

*Call me today!*

**TRACEY BELL**, MANAGING BROKER  
Tracey@TomSmithLand.com  
662.441.2500 **office** | 662.719.4720 **cell**



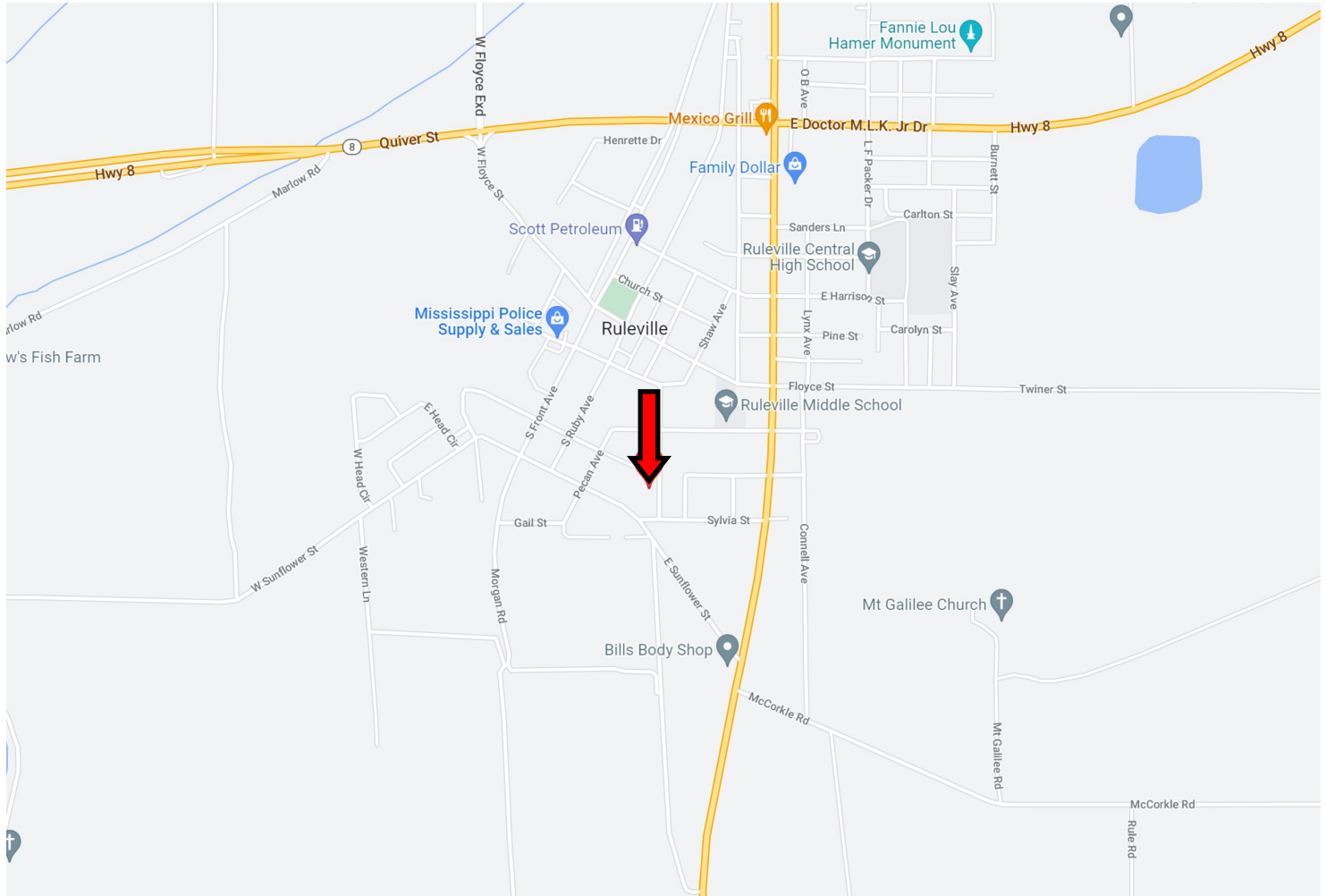
Expect More. Get More.

**TomSmithLandandHomes.com**

Information is believed to be accurate but not guaranteed.



# DIRECTIONAL MAP



**Address: 339 S. Chester Ave. Ruleville, MS 38771**

**Directions from the intersection of Hwy 8 and Hwy 61 Cleveland, MS:** Travel East on Hwy 8 for 9.3 miles and take a slight right onto W. Floyce St. In 0.4 miles turn right onto S. Front Ave. In 0.3 miles turn left on to W. Sunflower St and continue 0.3 miles, then turn left onto Sylvia St. Travel 203 feet and turn left onto S. Chester Ave. After 338 ft the house will be on the left. [Click for Google Maps.](#)



*Call me today!*

**TRACEY BELL**, MANAGING BROKER  
Tracey@TomSmithLand.com  
662.441.2500 **office** | 662.719.4720 **cell**



**TomSmithLandandHomes.com**

Information is believed to be accurate but not guaranteed.