

LOT 6 OF SUNSET ESTATES
1.73± ACRES IN BOLIVAR COUNTY, MS



\$50,000

If you have been looking for a place in Bolivar County, MS, to build your dream home, then here it is! This 1.73± acre lot is located in Sunset Estates at the corner of Cannon and Township Road just north of Cleveland. Water and power are already in place; all you need is your plans. Call Anthony to view this dream home spot today!

Directions from the Intersection of Hwy 8 and Hwy 61/Hwy 278 in Cleveland, MS: Travel Hwy 61/Hwy 278 for 3.2 miles. Turn left onto Township Road and travel 1.2 miles. Turn left onto Cannon Road, the property will be on your right. [GOOGLE MAP LINK](#)



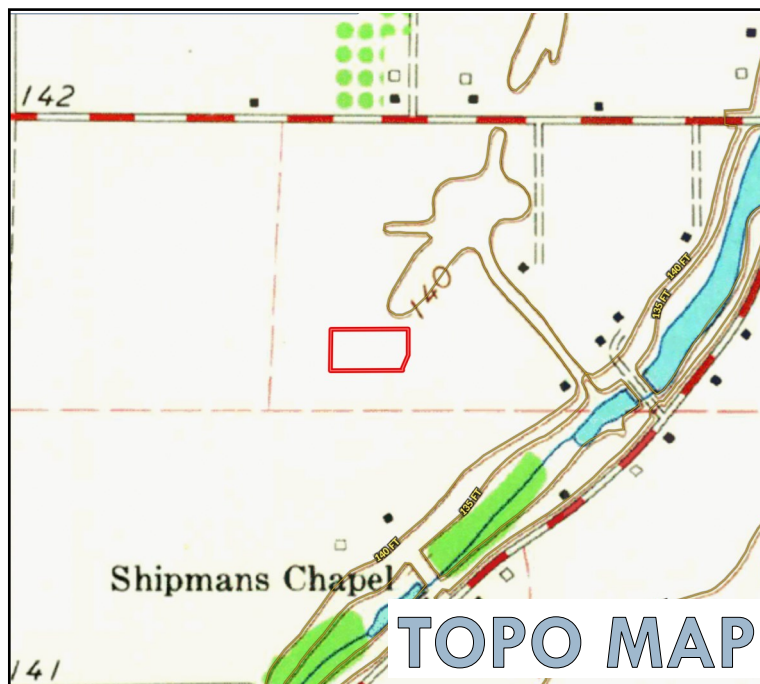
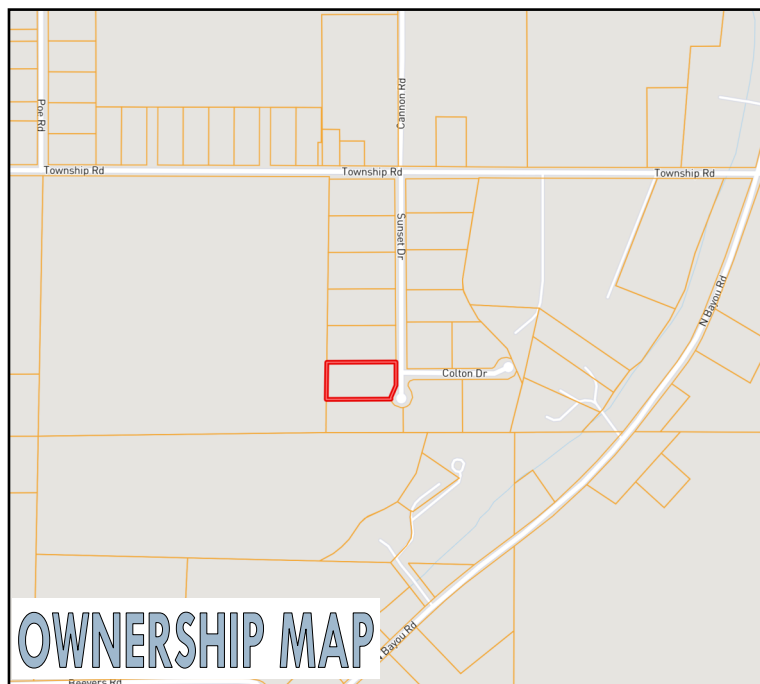
Call me today!

ANTHONY STEEN, REALTOR®
Anthony@TomSmithLand.com
662.441.2500 **office** | 662.645.5151 **cell**



TomSmithLandandHomes.com

Information is believed to be accurate but not guaranteed.



CLICK HERE FOR AN INTERACTIVE MAP

Call me today!

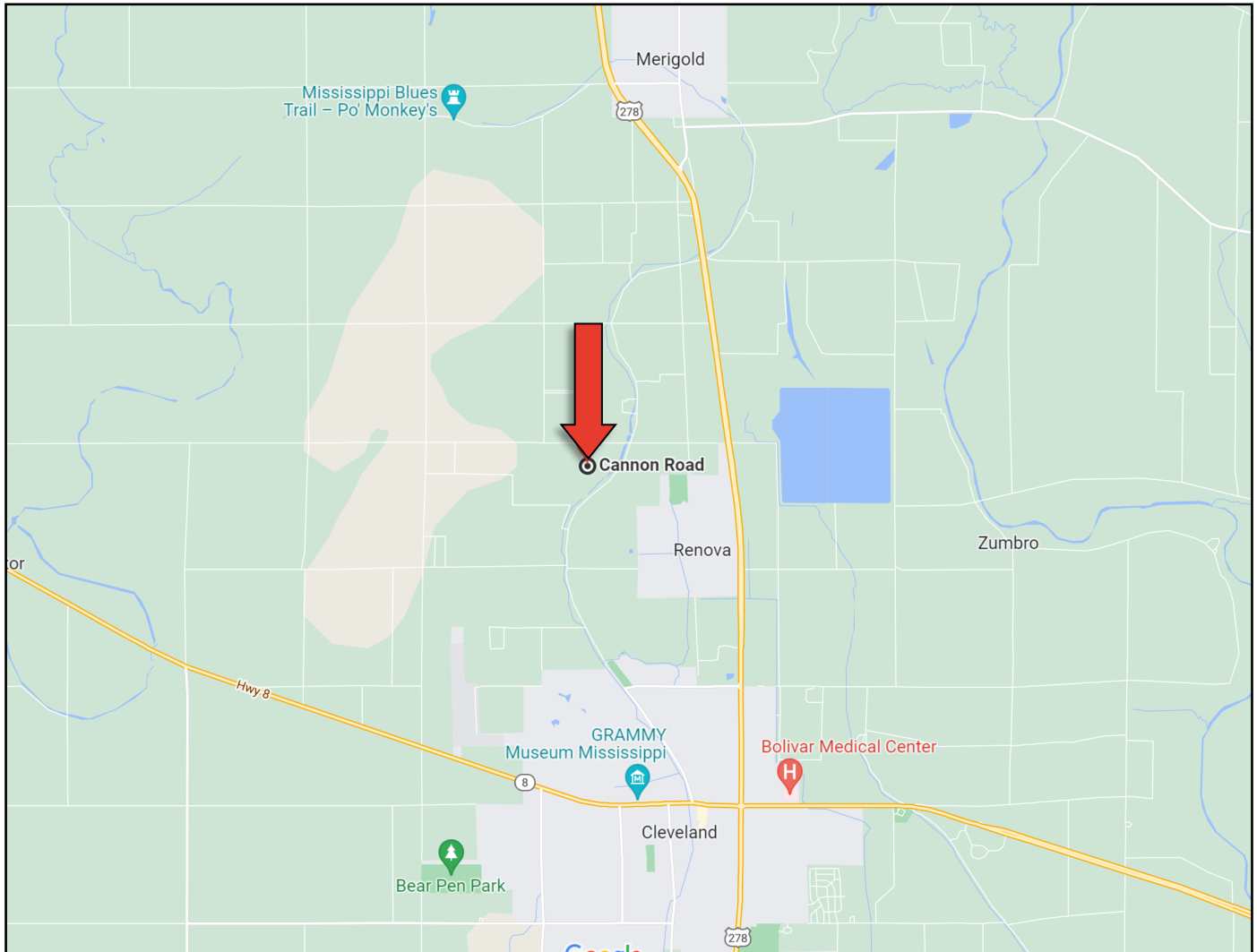
ANTHONY STEEN, REALTOR®
 Anthony@TomSmithLand.com
 662.441.2500 **office** | 662.645.5151 **cell**



TomSmithLandandHomes.com

Information is believed to be accurate but not guaranteed.

DIRECTIONAL MAP



Directions from the Intersection of Hwy 8 and Hwy 61 /Hwy 278 in Cleveland, MS: Travel Hwy 61 /Hwy 278 for 3.2 miles. Turn left onto Township Road and travel 1.2 miles. Turn left onto Cannon Road, the property will be on your right.
[GOOGLE MAP LINK](#)



Call me today!

ANTHONY STEEN, REALTOR®
Anthony@TomSmithLand.com
662.441.2500 **office** | 662.645.5151 **cell**



TomSmithLandandHomes.com

Information is believed to be accurate but not guaranteed.