

Mississippi Delta Farm Land

204.33± ACRES IN TALLAHATCHIE COUNTY, MS



\$919,500

This 204.33± acre property in Tallahatchie County, MS, is a true gem that offers a diverse and picturesque landscape. Divided into four separate tracts, this property boasts approximately 165 acres of fertile, tillable land that is currently under cultivation, providing a reliable source of rental income for years to come. The remaining portions of the property are covered in lush wooded areas, ditches, and turn rows. The cultivated acreage presents an excellent opportunity for farmers or investors to continue generating income through farming operations, while the wooded areas and ditches provide a haven for wildlife, making it a potential paradise for outdoor enthusiasts and recreational activities. Give Bruce a call to schedule your tour today!



Call me today!

BRUCE WEST, REALTOR®
Bruce@TomSmithLand.com
662.441.2500 **office** | 662.873.3007 **cell**



TomSmithLandandHomes.com

Information is believed to be accurate but not guaranteed.



Call me today!

BRUCE WEST, REALTOR®
Bruce@TomSmithLand.com
662.441.2500 **office** | 662.873.3007 **cell**



TomSmithLandandHomes.com

Information is believed to be accurate but not guaranteed.



Call me today!

BRUCE WEST, REALTOR®
Bruce@TomSmithLand.com
662.441.2500 **office** | 662.873.3007 **cell**



TomSmithLandandHomes.com

Information is believed to be accurate but not guaranteed.

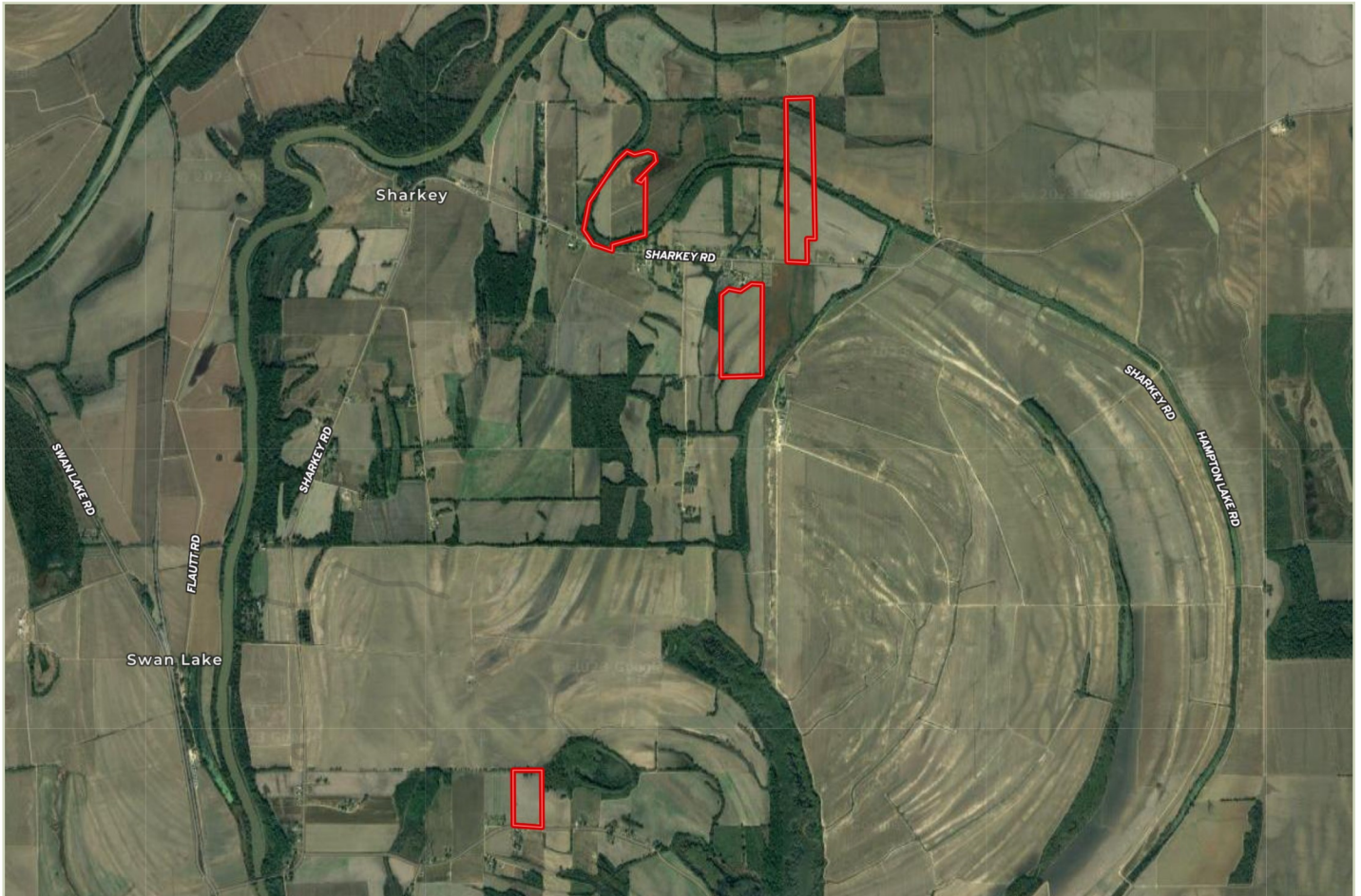
[illegible]

Tom Smith
LAND AND HOMES
Expect More. Get More.

2011-2022
AMERICA'S
BEST
BROKERAGES

Information is believed to be accurate but not guaranteed.

Aerial Map



[Click Here for an Interactive Map](#)

Call me today!

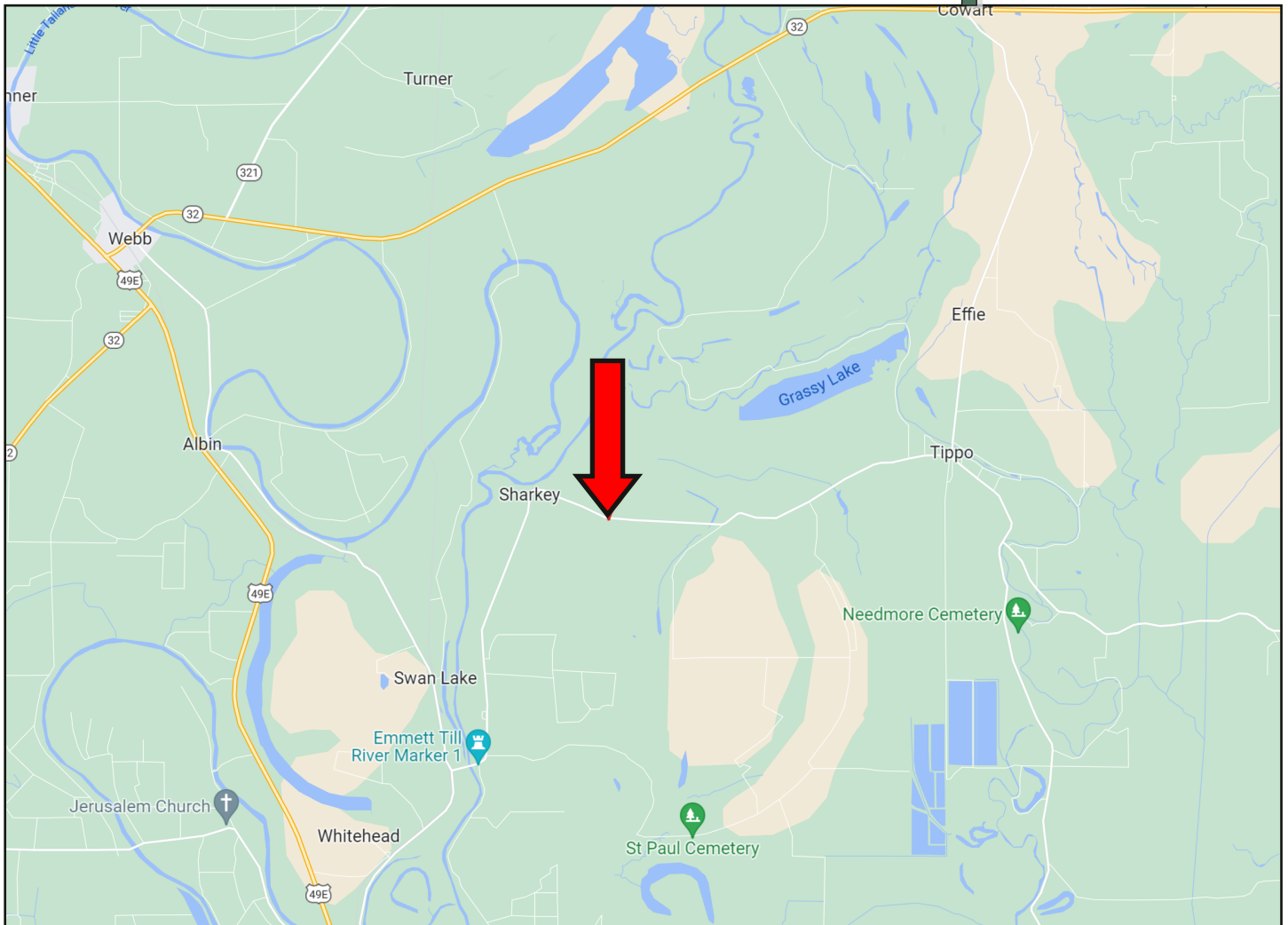
BRUCE WEST, REALTOR®
Bruce@TomSmithLand.com
662.441.2500 **office** | 662.873.3007 **cell**



TomSmithLandandHomes.com

Information is believed to be accurate but not guaranteed.

Directional Map



Directions from Hwy 49 and Swan Lake Rd. in Glendora, MS: Travel Swan Lake Road for 2.4 miles. Swan Lake Rd. becomes Sharkey Rd. The properties will be on both sides of the road. [GOOGLE MAP LINK](#)



Call me today!

BRUCE WEST, REALTOR®
Bruce@TomSmithLand.com
662.441.2500 **office** | 662.873.3007 **cell**



TomSmithLandandHomes.com

Information is believed to be accurate but not guaranteed.