

Beautiful Build In Progress

Sunflower County, MS



1400 Bayou Drive Indianola, MS 38751

Beautiful Home Build in Progress! This custom-built 6,000+/- square foot home is planned for six bedrooms and five and a half baths, situated just outside Indianola along Bayou Drive's banks on a beautiful 2.35+/- acre lot. Take advantage of this opportunity to finish out the home you always wanted in the heart of the MS Delta. Call Emerson today for your private tour.

Directions from the intersection of Hwy 49 and Hwy 82 in Indianola, MS: Travel South on Hwy 82 for approximately 0.4 miles. Turn left onto Bayou Dr/Main Street. After 0.5 miles, the house is on the right.



Call me today!

EMERSON LOVELACE, REALTOR®
Emerson@TomSmithLand.com
662.441.2500 office | 662.715.3302 cell



TomSmithLandandHomes.com

Information is believed to be accurate but not guaranteed.



Call me today!

EMERSON LOVELACE, REALTOR®
Emerson@TomSmithLand.com
662.441.2500 **office** | 662.715.3302 **cell**



TomSmithLandandHomes.com

Information is believed to be accurate but not guaranteed.



Call me today!

EMERSON LOVELACE, REALTOR®
Emerson@TomSmithLand.com
662.441.2500 **office** | 662.715.3302 **cell**

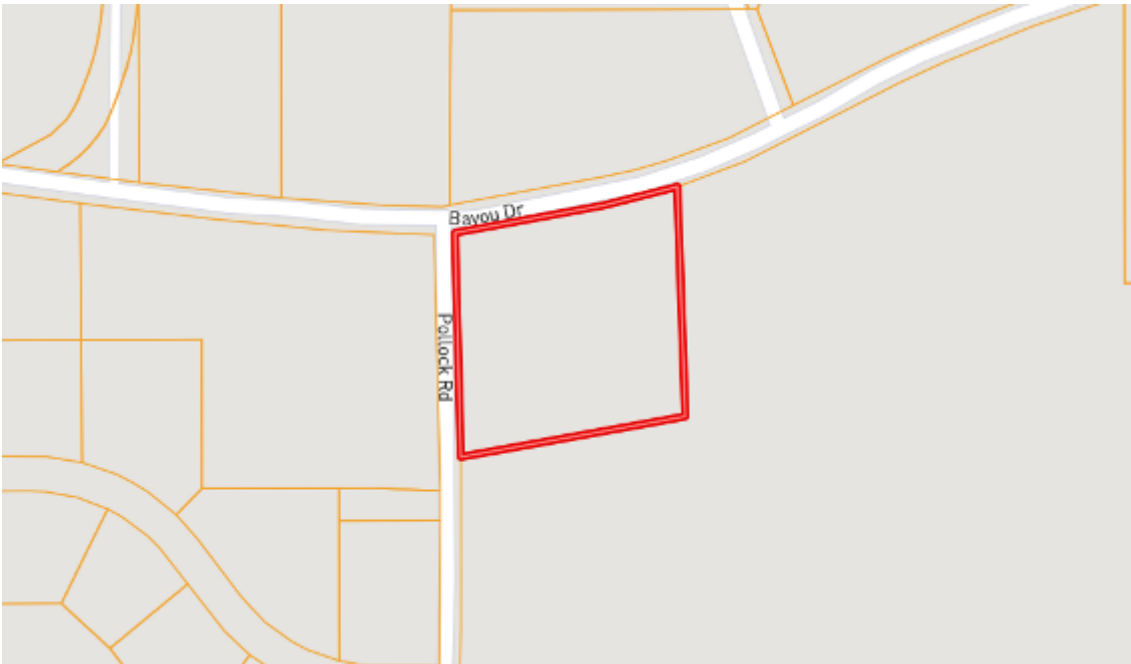
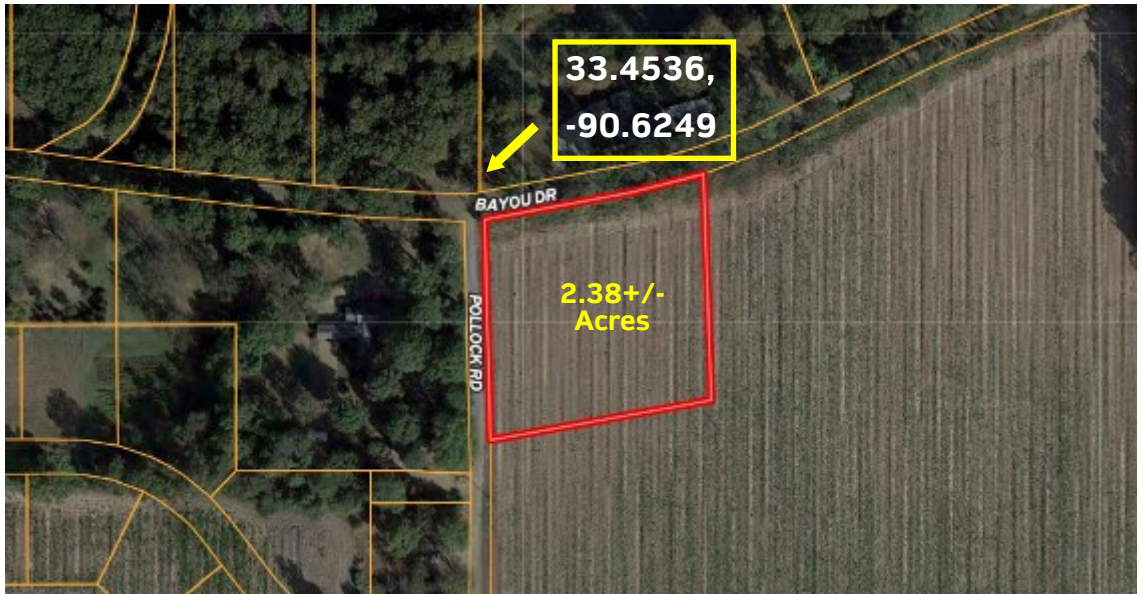


Expect More. Get More.

TomSmithLandandHomes.com

Information is believed to be accurate but not guaranteed.

Aerial Map



Ownership Map

[Click for Interactive Map](#)

Call me today!

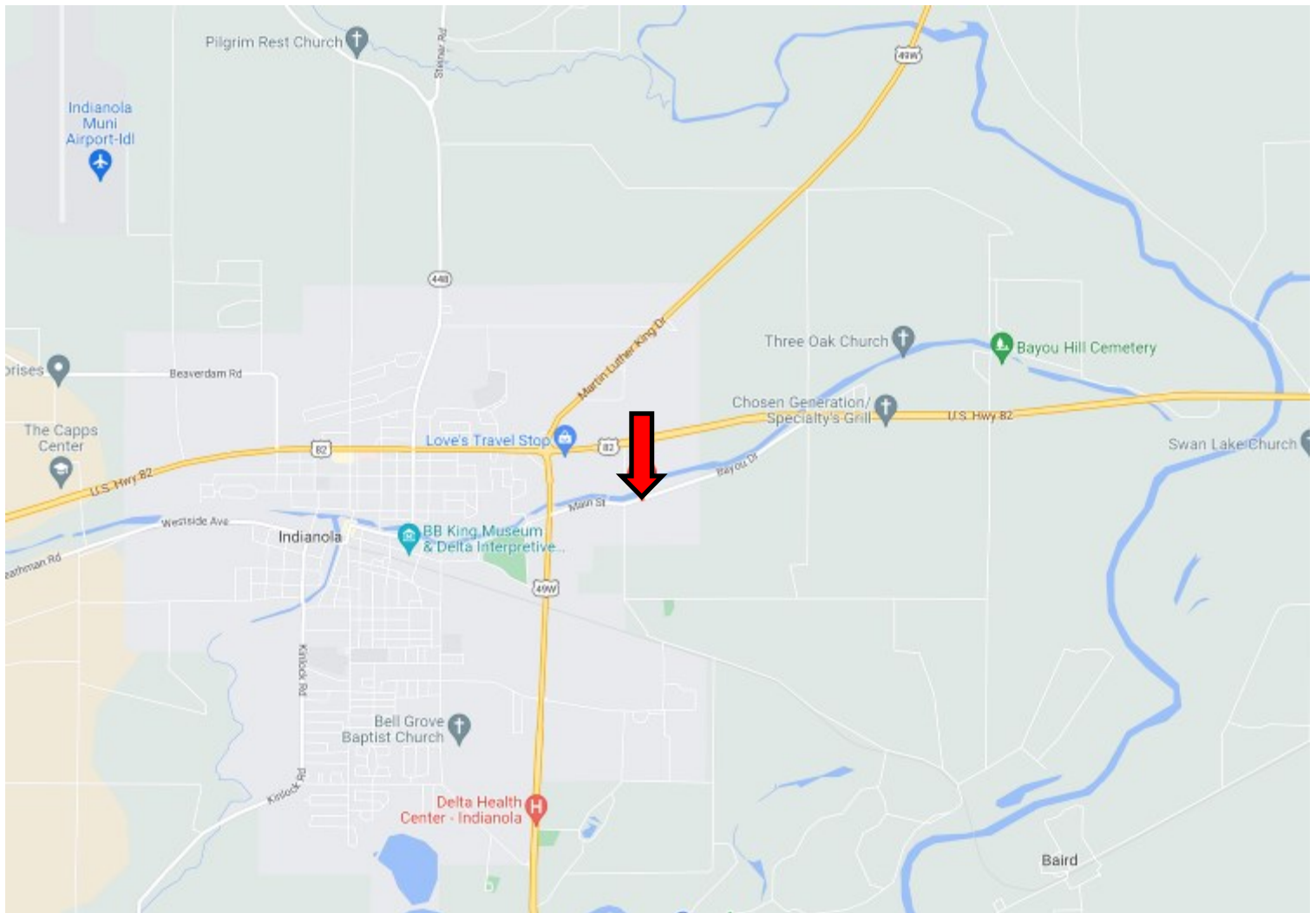
EMERSON LOVELACE, REALTOR®
Emerson@TomSmithLand.com
662.441.2500 **office** | 662.715.3302 **cell**



TomSmithLandandHomes.com

Information is believed to be accurate but not guaranteed.

Directional Map



Address: 1400 Bayou Drive Indianola, MS 38751

Directions from the intersection of Hwy 49 & Hwy 82 in Indianola, MS: Travel South on Hwy 82 for approximately 0.4 miles. Turn left onto Bayou Dr/Main Street and in 0.5 miles the house is on the right. [Click for Google Maps.](#)



Call me today!

EMERSON LOVELACE, REALTOR®
Emerson@TomSmithLand.com
662.441.2500 **office** | 662.715.3302 **cell**



TomSmithLandandHomes.com

Information is believed to be accurate but not guaranteed.