

# Beautiful Build In Progress

## Sunflower County, MS



**\$425,000**

### **1400 Bayou Drive Indianola, MS 38751**

Beautiful Home Build in Progress! This custom-built 6,000+/- square foot home is planned for six bedrooms and five and a half baths, situated just outside Indianola along Bayou Drive's banks on a beautiful 2.35+/- acre lot. Take advantage of this opportunity to finish out the home you always wanted in the heart of the MS Delta. Call Emerson today for your private tour.

**Directions from the intersection of Hwy 49 and Hwy 82 in Indianola, MS:** Travel South on Hwy 82 for approximately 0.4 miles. Turn left onto Bayou Dr/Main Street. After 0.5 miles, the house is on the right.



*Call me today!*

**EMERSON LOVELACE, REALTOR®**  
Emerson@TomSmithLand.com  
662.441.2500 office | 662.715.3302 cell



**TomSmithLandandHomes.com**

Information is believed to be accurate but not guaranteed.



*Call me today!*

**EMERSON LOVELACE**, REALTOR®  
Emerson@TomSmithLand.com  
662.441.2500 **office** | 662.715.3302 **cell**



**TomSmithLandandHomes.com**

Information is believed to be accurate but not guaranteed.



*Call me today!*

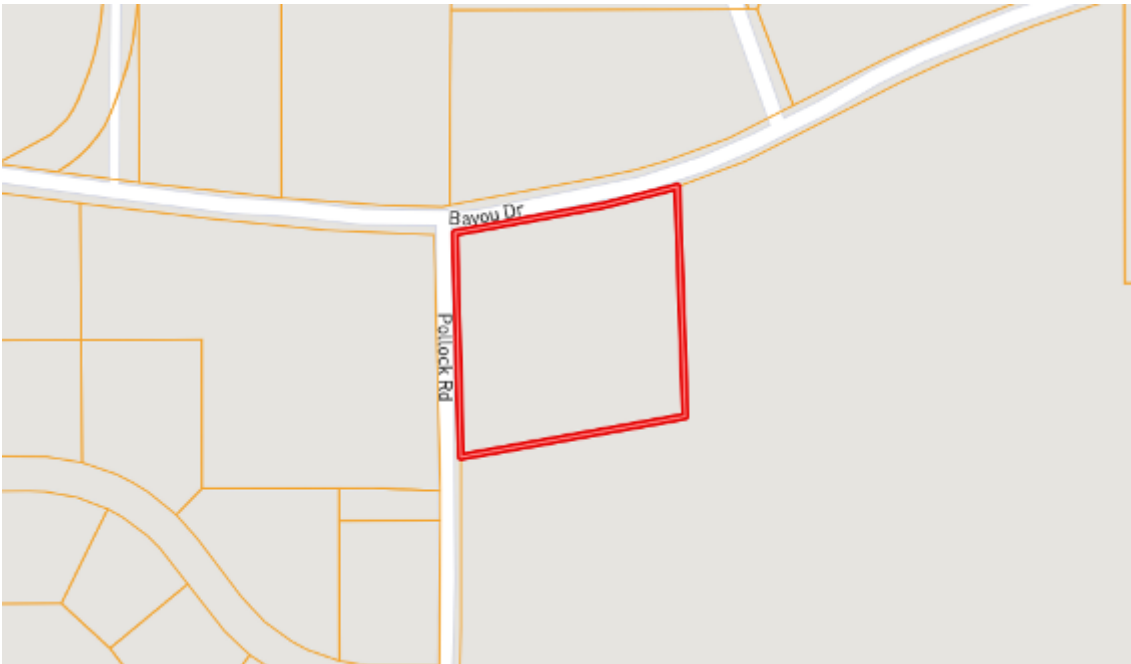
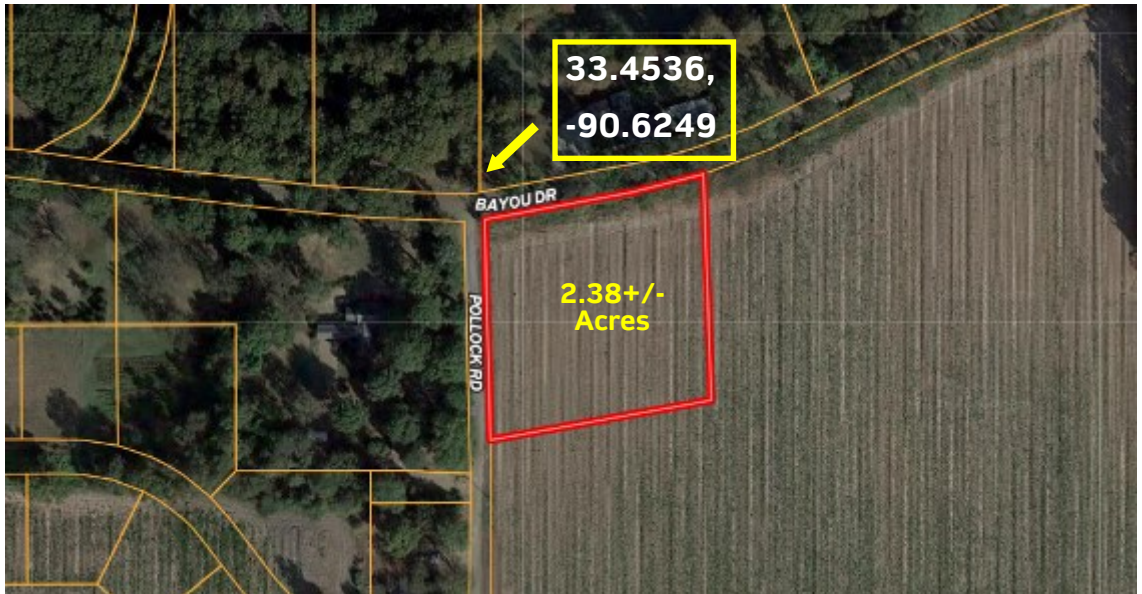
**EMERSON LOVELACE**, REALTOR®  
Emerson@TomSmithLand.com  
662.441.2500 **office** | 662.715.3302 **cell**



**TomSmithLandandHomes.com**

Information is believed to be accurate but not guaranteed.

Aerial Map



Ownership Map

[Click for Interactive Map](#)

*Call me today!*

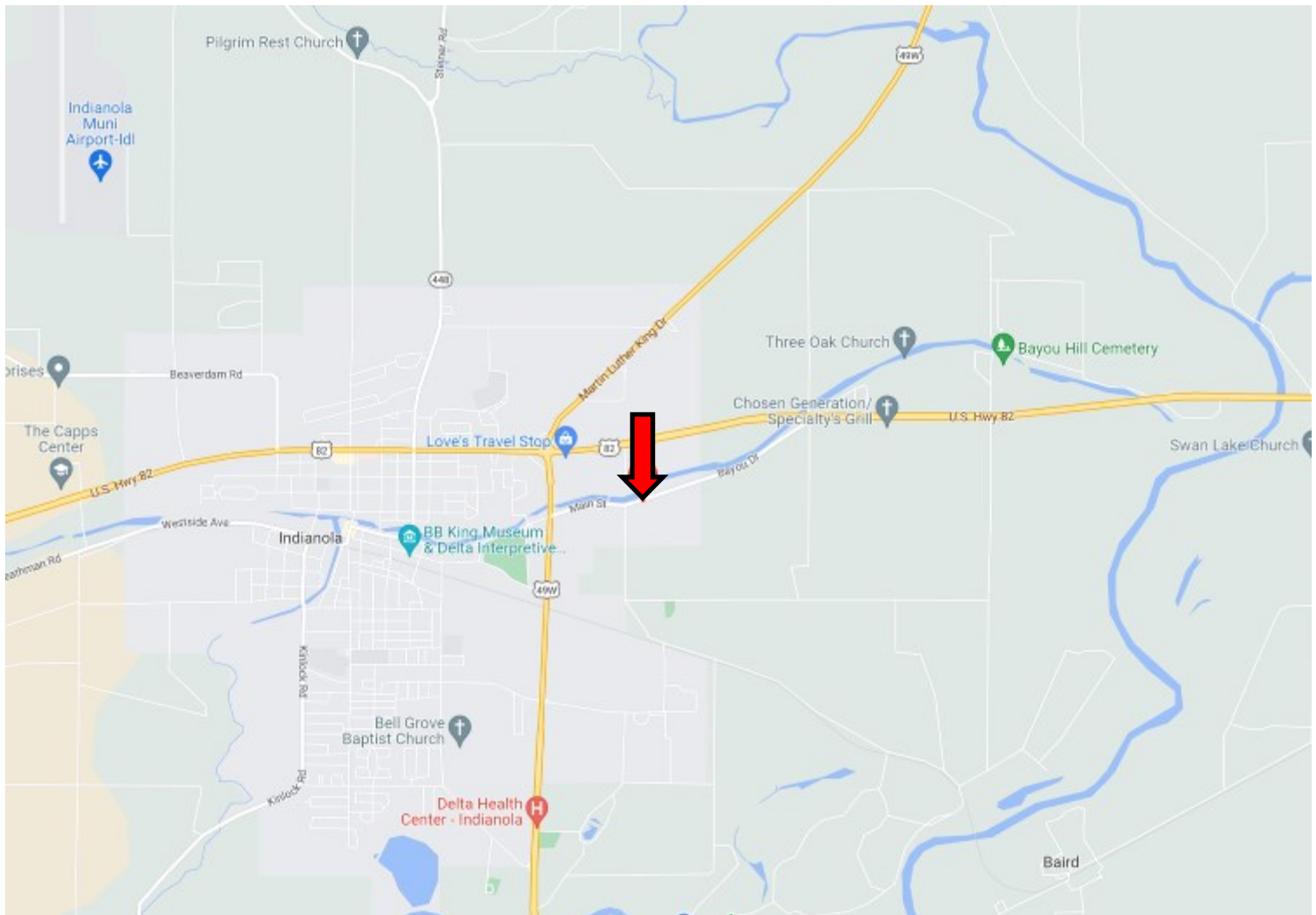
**EMERSON LOVELACE**, REALTOR®  
Emerson@TomSmithLand.com  
662.441.2500 **office** | 662.715.3302 **cell**



**TomSmithLandandHomes.com**

Information is believed to be accurate but not guaranteed.

# Directional Map



**Address: 1400 Bayou Drive Indianola, MS 38751**

**Directions from the intersection of Hwy 49 & Hwy 82 in Indianola, MS:** Travel South on Hwy 82 for approximately 0.4 miles. Turn left onto Bayou Dr/Main Street and in 0.5 miles the house is on the right. [Click for Google Maps.](#)



*Call me today!*

**EMERSON LOVELACE, REALTOR®**  
Emerson@TomSmithLand.com  
662.441.2500 **office** | 662.715.3302 **cell**



**TomSmithLandandHomes.com**

Information is believed to be accurate but not guaranteed.