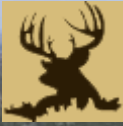


# 80± Acre Hunting Paradise Attala County, MS



## \$156,000

Welcome to your new 80± hunting paradise in Attala County, MS. Located just under 10 minutes south of Kosciusko, MS, on HWY 43, this 80± acre tract is in a convenient yet unspoiled location. Deer signs were noted, and some owl hoots had the turkey birds fired up during the initial inspection. A gas line runs along the eastern 1/4 of the property, making an excellent box blind location. The timber make-up is primarily mature pines with scattered hardwood pockets that will provide a great future timber investment. An internal trail system traverses most of the property, making for easy access. Electricity is provided through Entergy, and water through the town of Sallis. Call Kadero Edley today for your private showing!



*Call me today!*

**KADERO EDLEY, REALTOR®**  
Kadero@TomSmithLand.com  
601.898.2772 office | 601.488.7000 cell



**TomSmithLandandHomes.com**

Information is believed to be accurate but not guaranteed.



*Call me today!*

**KADERO EDLEY, REALTOR®**  
Kadero@TomSmithLand.com  
601.898.2772 **office** | 601.488.7000 **cell**



Expect More. Get More.



**TomSmithLandandHomes.com**

Information is believed to be accurate but not guaranteed.



*Call me today!*

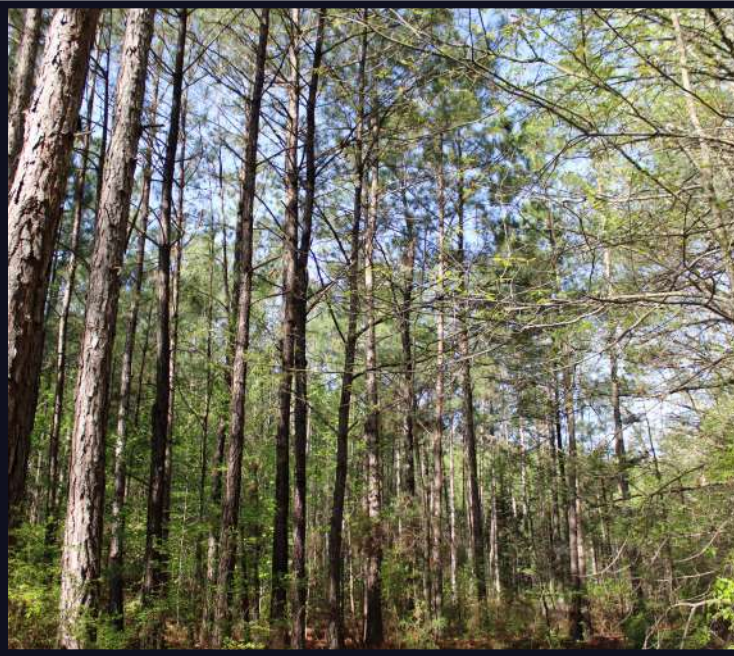
**KADERO EDLEY, REALTOR®**  
Kadero@TomSmithLand.com  
601.898.2772 office | 601.488.7000 cell



Expect More. Get More.

**TomSmithLandandHomes.com**

Information is believed to be accurate but not guaranteed.



*Call me today!*

**KADERO EDLEY, REALTOR®**  
Kadero@TomSmithLand.com  
601.898.2772 **office** | 601.488.7000 **cell**



Expect More. Get More.



**TomSmithLandandHomes.com**

Information is believed to be accurate but not guaranteed.



*Call me today!*

**KADERO EDLEY, REALTOR®**  
Kadero@TomSmithLand.com  
601.898.2772 **office** | 601.488.7000 **cell**



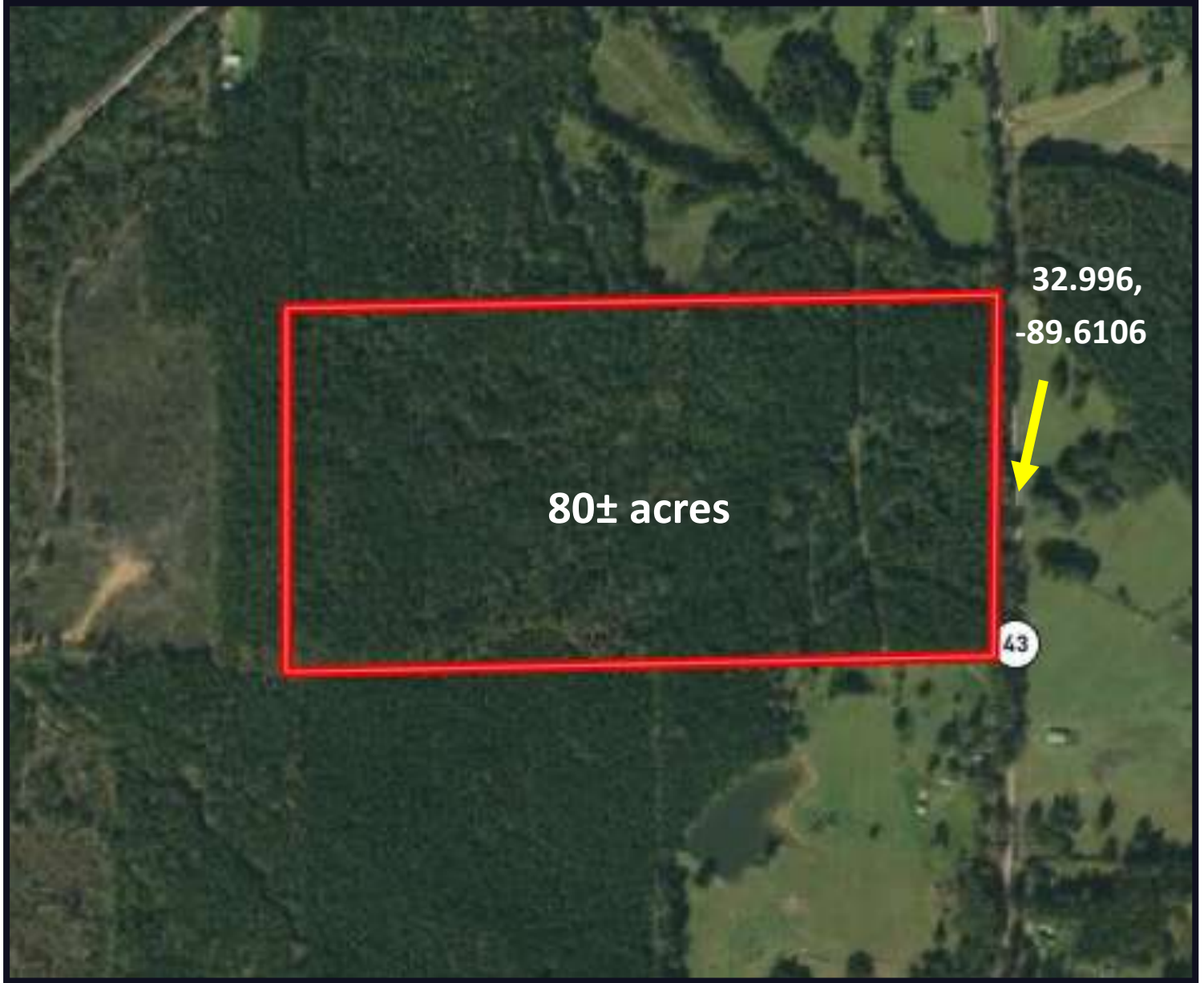
Expect More. Get More.



**TomSmithLandandHomes.com**

Information is believed to be accurate but not guaranteed.

# Aerial Map



[Click Here for Interactive Map](#)

*Call me today!*

**KADERO EDLEY**, REALTOR®  
Kadero@TomSmithLand.com  
601.898.2772 **office** | 601.488.7000 **cell**



Expect More. Get More.

**TomSmithLandandHomes.com**

Information is believed to be accurate but not guaranteed.

# Ownership Map



*Call me today!*

**KADERO EDLEY**, REALTOR®  
Kadero@TomSmithLand.com  
601.898.2772 office | 601.488.7000 cell

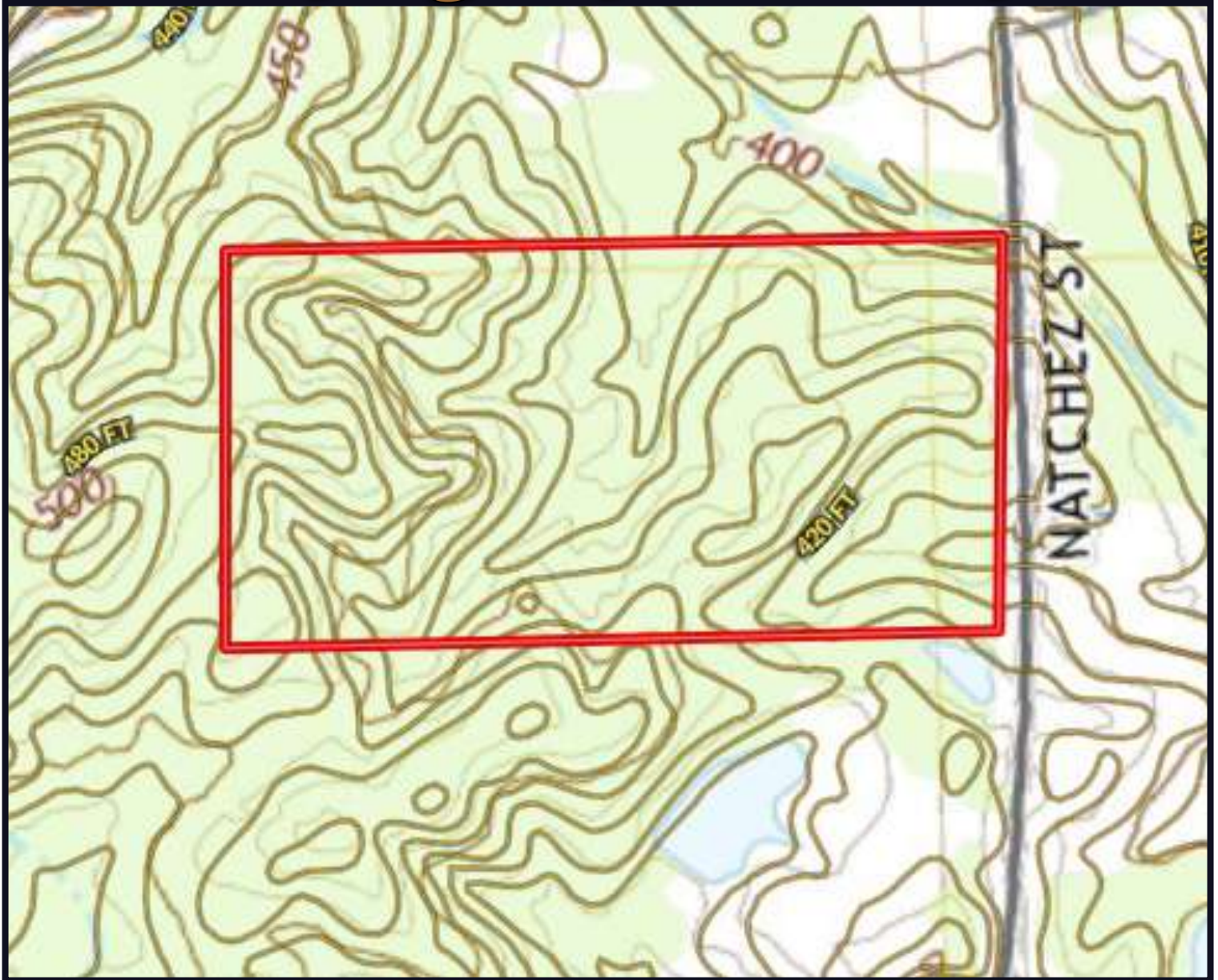


Expect More. Get More.

**TomSmithLandandHomes.com**

Information is believed to be accurate but not guaranteed.

# Topographic Map



*Call me  
today!*

**KADERO EDLEY**, REALTOR®  
Kadero@TomSmithLand.com  
601.898.2772 office | 601.488.7000 cell



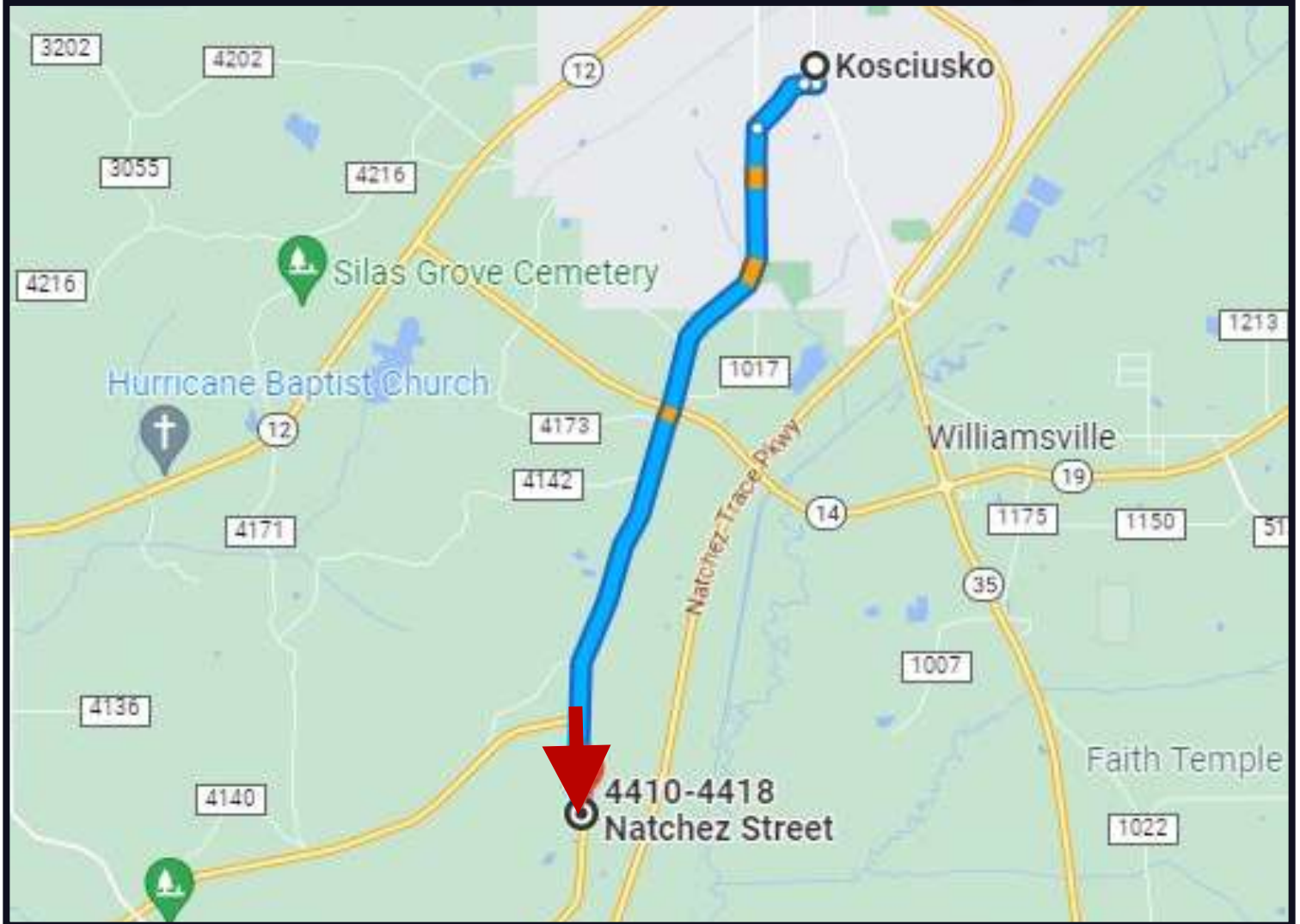
Expect More. Get More.

**TomSmithLandandHomes.com**

Information is believed to be accurate but not guaranteed.



# Directional Map



**Directions from S Huntington St in Kosciusko, MS:** Travel south of S Huntington St. towards E Monroe St. for 0.1 miles. Turn right onto Coleman St. for 404 ft. Turn onto S Natchez St. for 0.4 miles. Continue left to stay on S Natchez St. for 4.2 miles and the property will be on your right.

[Google Maps Link](#)



*Call me today!*

**KADERO EDLEY, REALTOR®**  
Kadero@TomSmithLand.com  
601.898.2772 office | 601.488.7000 cell



**TomSmithLandandHomes.com**

Information is believed to be accurate but not guaranteed.