

Long Creek Plantation

\$2,925,000



1,230± Acres in Tallahatchie & Grenada County, MS
5/7 Undivided Majority Ownership Interest with 4 Cabins

- Established Food Plots
- Outstanding Road System
- Shooting Houses
- Majority Hardwoods and Pine Saw Timber
- Several Stocked Ponds with Bass and Bream
- Professionally Managed Grounds
- Three Ponds for Wildlife
- Long Creek Runs Throughout Property
- Abundant with Deer, Turkey, Ducks, Hogs, and Small Game



Call me today!

EMERSON LOVELACE, REALTOR®
Emerson@TomSmithLand.com
662.441.2500 **office** | 662.715.3302 **cell**



TomSmithLandandHomes.com

Information is believed to be accurate but not guaranteed.

1,230± Acres in Tallahatchie and Grenada County, MS | Long Creek Plantation

For Sale: 5/7 Undivided Majority Ownership Interest with 4 Cabins

The beauty of the great state of Mississippi is indeed undeniable. Its diverse topography is rich in seasonal splendor that will never disappoint. Welcome to Long Creek Plantation, an authentic Mississippi down-home outdoor heaven in both Tallahatchie and Grenada Counties. Long Creek Plantation gets its name from the clear water, a sandy bottom creek flowing through the heart of the property, providing a lifeline to the abundant wildlife and a beacon of endless fun and adventure for those lucky enough to enjoy it. This 1,230+/- acres property is truly one-of-a-kind and secluded as the road terminates at the privacy gates. As you wind down the road to the main compound, you will be amazed by the beauty of the timber, food plots, creeks, and impeccable property maintenance. Once you arrive at the compound, you



will be blown away by the beauty surrounding the seven cabins, with some of them fronting Long Creek with porches overlooking the banks so you can enjoy your first cup of coffee!

This offering is a five-sevenths majority ownership interest in Long Creek Plantation. Included in this purchase are four beautiful Lodges/Cabins. Three of the cabins overlook Long Creek and have fire pits and park benches, so you can enjoy watching the kids play while you enjoy your favorite beverage while watching the sunset.

When you are ready to venture out, you will be amazed at the diversity of this property with its 22 beautiful food plots, 700+/- acres of hardwood timber, an amazing road system, two fishing lakes, 275+/- acres of mature pine saw log timber, and game like you have never seen! This property has been managed for trophy whitetail for over ten years, and the results are impressive. If you are hooked on chasing that long beard of your dreams, you will have trouble deciding where to hunt, as the turkey population is crazy! If you are the angler, you are in for a treat! The lakes are managed and pampered for the big bass. Stocked with bass and bream, you will hook into some crappie every now and then as well!

This property is perfect for the family wanting several cabins for their family and friends or would make an excellent corporate retreat. This is one of those properties you really have to see to appreciate. A Sportsman's Paradise, Nature Lover's Muse, or an all-out Wilderness Adventure, the choice is yours...

1,230+/- Acres of the most diverse wildlife habitat our great state has to offer steps from your cabin's front door. The lodging options at LCP are Five Star accommodations as you "rough it in style" with every modern convenience and need to be met, no matter your preferences. This is one of those properties you must see to appreciate. Call Emerson to schedule your private showing or discuss this outstanding property's possibilities!

Call me today!

EMERSON LOVELACE, REALTOR®
Emerson@TomSmithLand.com
662.441.2500 **office** | 662.715.3302 **cell**



TomSmithLandandHomes.com

Information is believed to be accurate but not guaranteed.



Call me today!

EMERSON LOVELACE, REALTOR®
 Emerson@TomSmithLand.com
 662.441.2500 **office** | 662.715.3302 **cell**



TomSmithLandandHomes.com

Information is believed to be accurate but not guaranteed.



Call me today!

EMERSON LOVELACE, REALTOR®
 Emerson@TomSmithLand.com
 662.441.2500 **office** | 662.715.3302 **cell**



TomSmithLandandHomes.com

Information is believed to be accurate but not guaranteed.



Call me today!

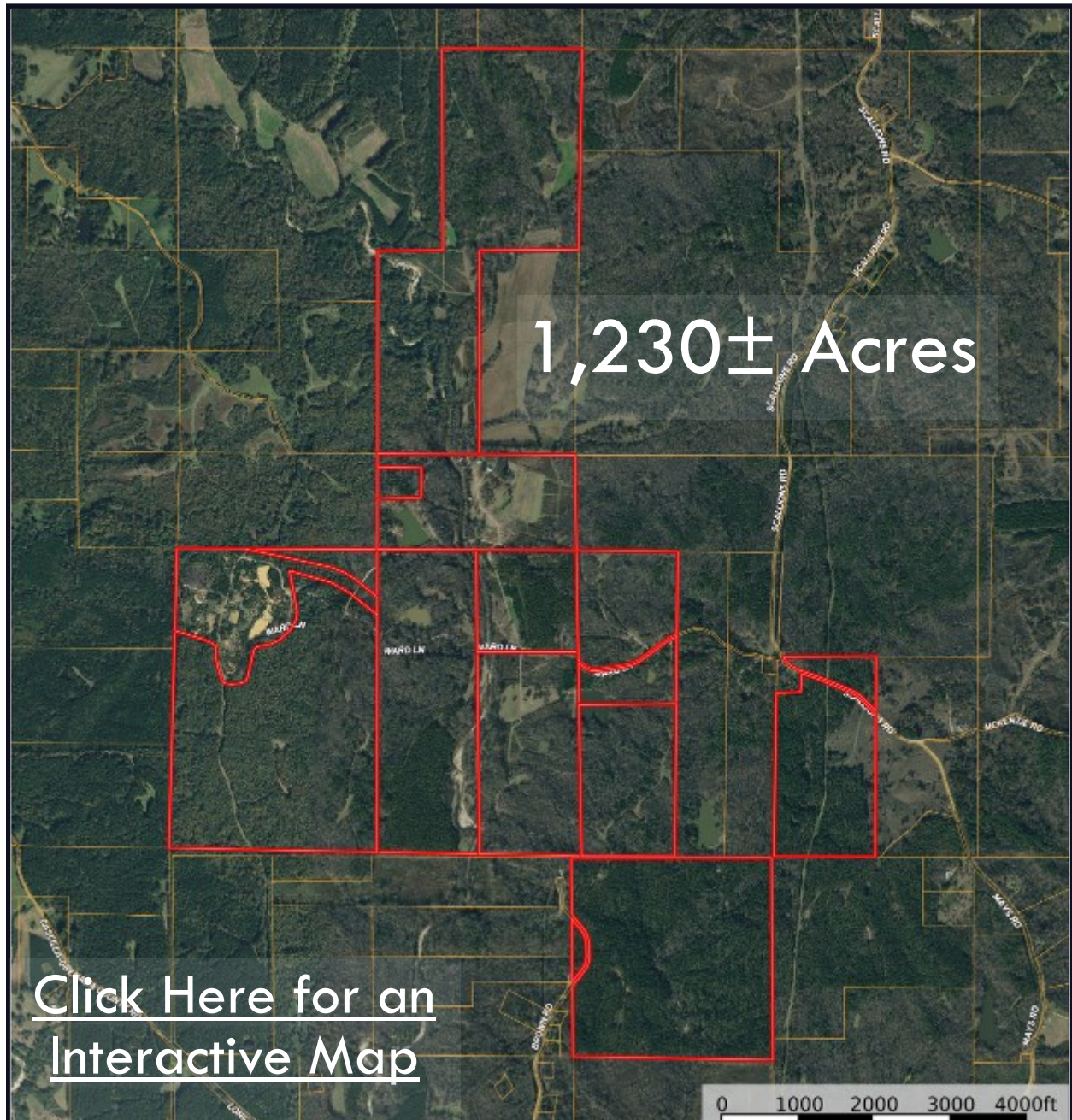
EMERSON LOVELACE, REALTOR®
 Emerson@TomSmithLand.com
 662.441.2500 **office** | 662.715.3302 **cell**



TomSmithLandandHomes.com

Information is believed to be accurate but not guaranteed.

Aerial Map



Call me today!

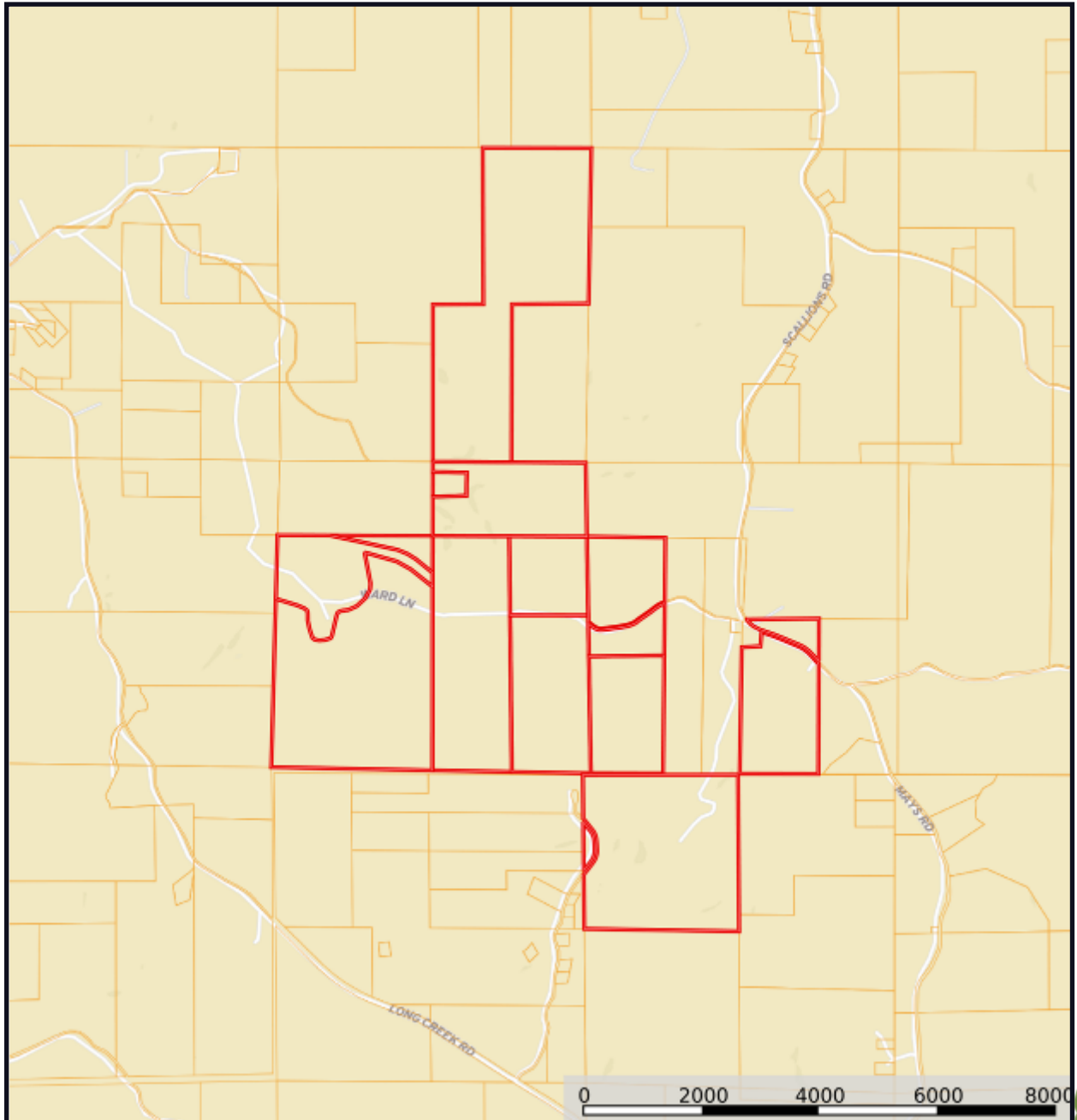
EMERSON LOVELACE, REALTOR®
Emerson@TomSmithLand.com
662.441.2500 **office** | 662.715.3302 **cell**



TomSmithLandandHomes.com

Information is believed to be accurate but not guaranteed.

Ownership Map



Call me today!

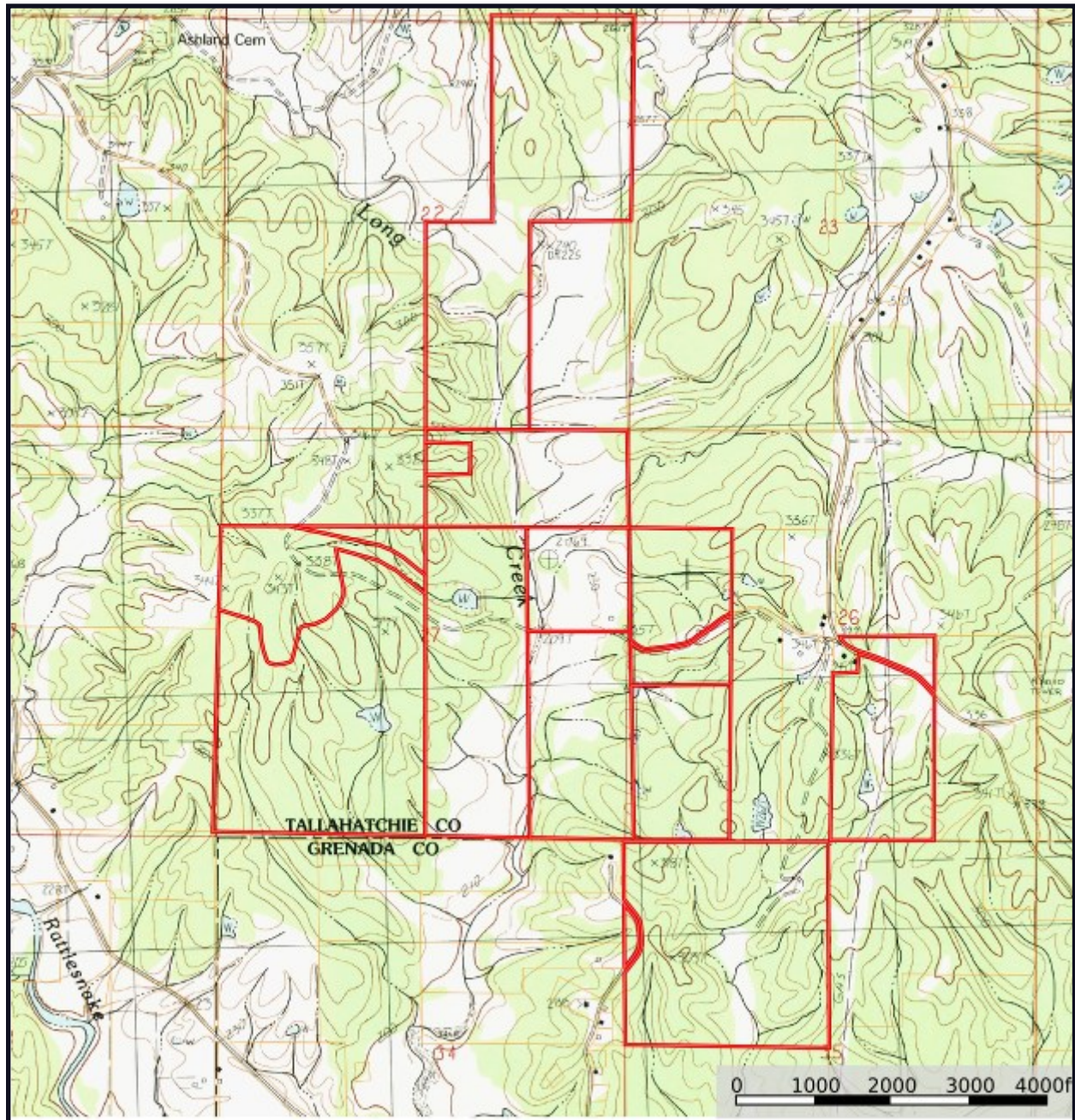
EMERSON LOVELACE, REALTOR®
Emerson@TomSmithLand.com
662.441.2500 **office** | 662.715.3302 **cell**



TomSmithLandandHomes.com

Information is believed to be accurate but not guaranteed.

Topography Map



Call me today!

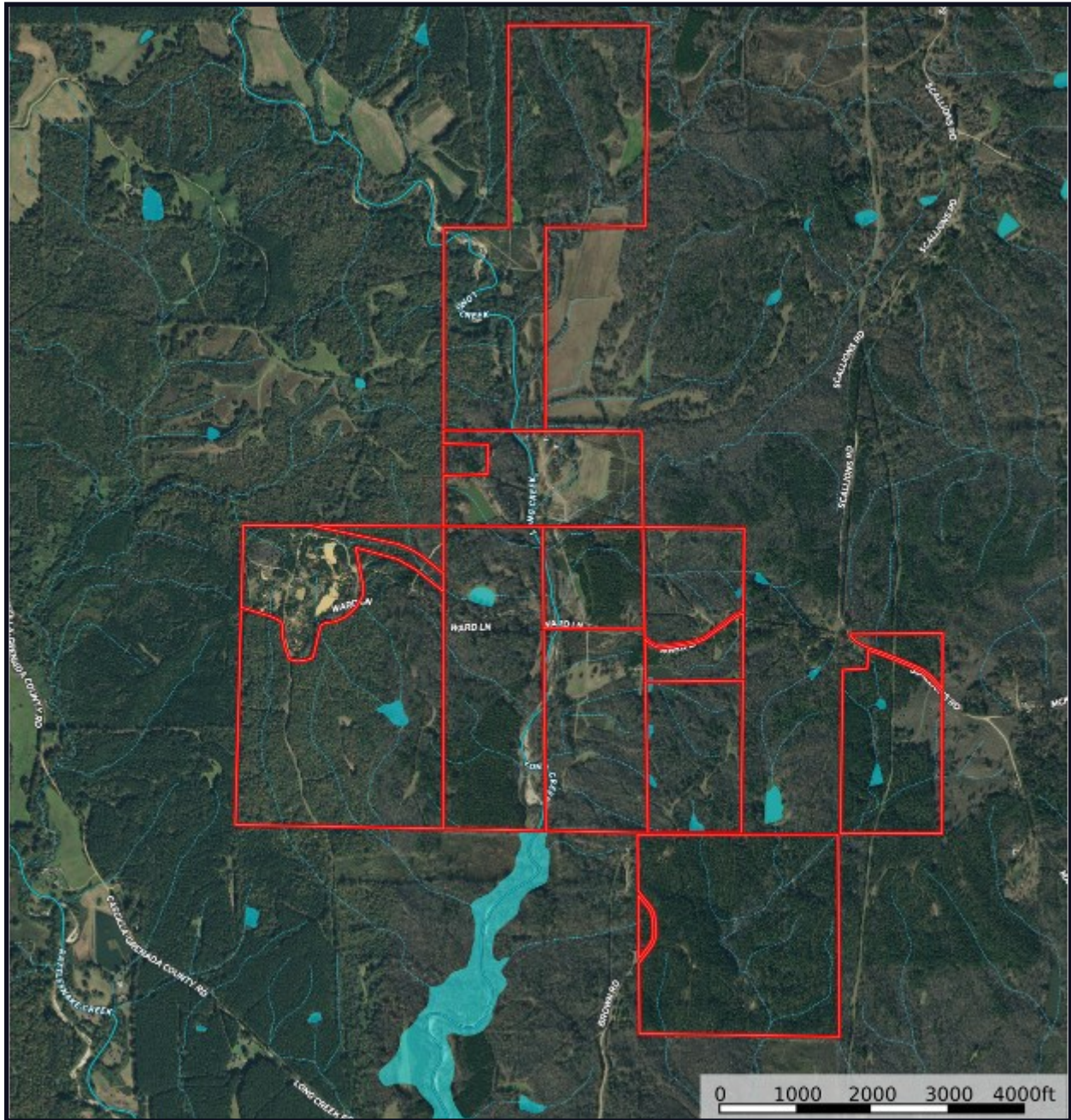
EMERSON LOVELACE, REALTOR®
Emerson@TomSmithLand.com
662.441.2500 **office** | 662.715.3302 **cell**



TomSmithLandandHomes.com

Information is believed to be accurate but not guaranteed.

Flood Map



Call me today!

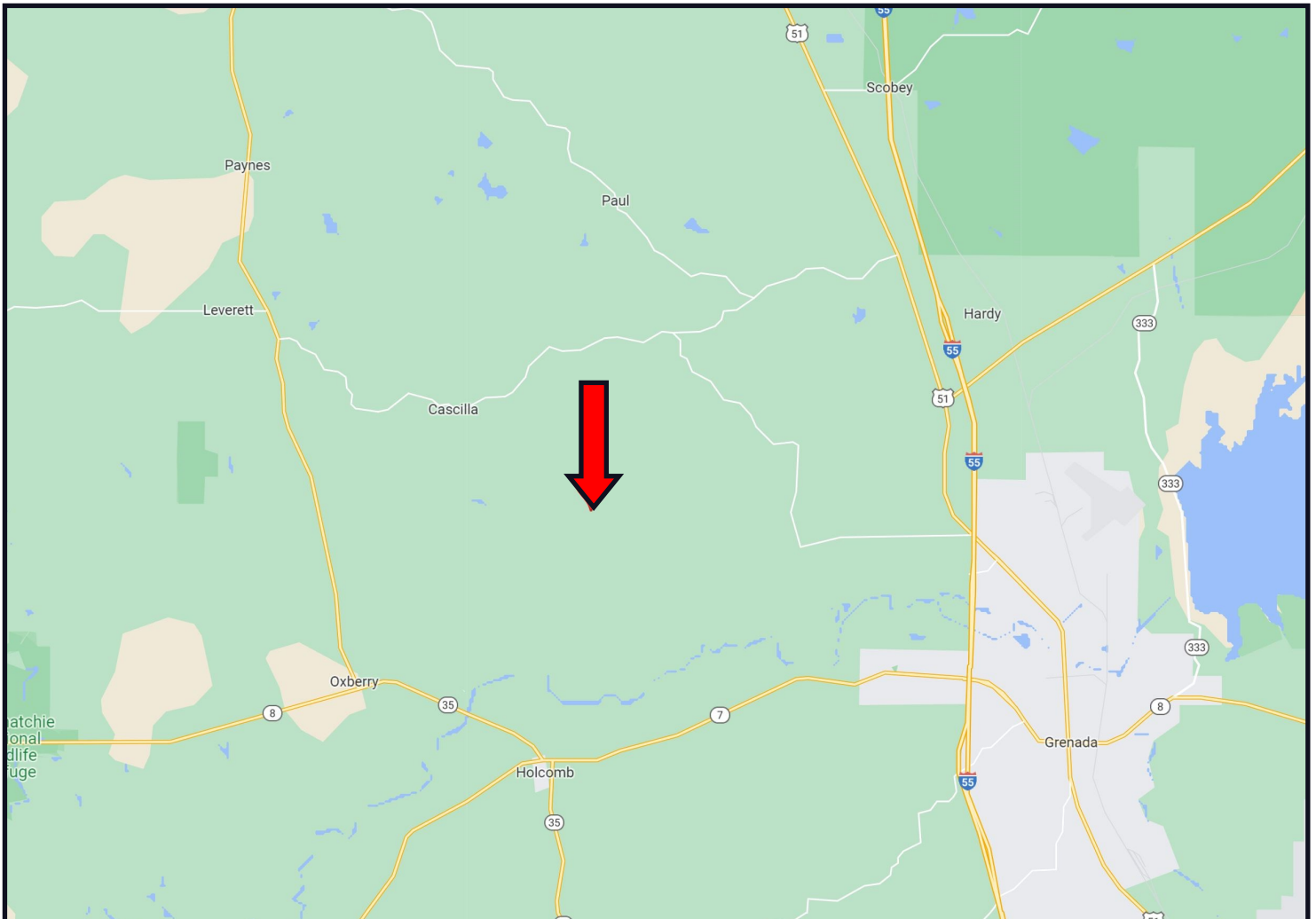
EMERSON LOVELACE, REALTOR®
Emerson@TomSmithLand.com
662.441.2500 **office** | 662.715.3302 **cell**



TomSmithLandandHomes.com

Information is believed to be accurate but not guaranteed.

Directional Map



DIRECTIONS FROM I-55 IN GRENADA, MS: Take exit 208 towards Papermill Road and then turn left on to Highway 51. Turn left on Pear Ridge road and travel 3 miles. Turn left on McSwine Road and travel 1 mile. Make a slight left on Proctor Road then continue on McKenzie Road 1.5 miles. Turn left on Ward Lane the property will be at the end of the road. [GOOGLE MAPS LINK](#)



Call me today!

EMERSON LOVELACE, REALTOR®
Emerson@TomSmithLand.com
662.441.2500 **office** | 662.715.3302 **cell**



TomSmithLandandHomes.com

Information is believed to be accurate but not guaranteed.