

Investment Property

Sunflower County, MS



\$225,000

110 Weathersby Road Indianola, MS 38751

Are you looking for an investment property? Look at this 2500 sq/ft shop sitting on two acres of land right off Highway 82 frontage in Indianola, MS! Perfect location for maximum exposure, and MSDOT verified a 9100 daily traffic count. Call Emerson today at 662-441-2500!

Directions from the intersection of Hwy 49 and Hwy 82 in Indianola, MS: Travel South on Hwy 82 for approximately 0.4 miles. Turn right onto Weathersby Road and in 430 feet the shop will be on the right.



Call me today!

EMERSON LOVELACE, REALTOR®
Emerson@TomSmithLand.com
662.441.2500 **office** | 662.715.3302 **cell**



TomSmithLandandHomes.com

Information is believed to be accurate but not guaranteed.



Call me today!

EMERSON LOVELACE, REALTOR®
Emerson@TomSmithLand.com
662.441.2500 office | 662.715.3302 cell



TomSmithLandandHomes.com

Information is believed to be accurate but not guaranteed.



Call me today!

EMERSON LOVELACE, REALTOR®
Emerson@TomSmithLand.com
662.441.2500 **office** | 662.715.3302 **cell**



TomSmithLandandHomes.com

Information is believed to be accurate but not guaranteed.

Aerial Map



[Click for Interactive Map](#)

Call me today!

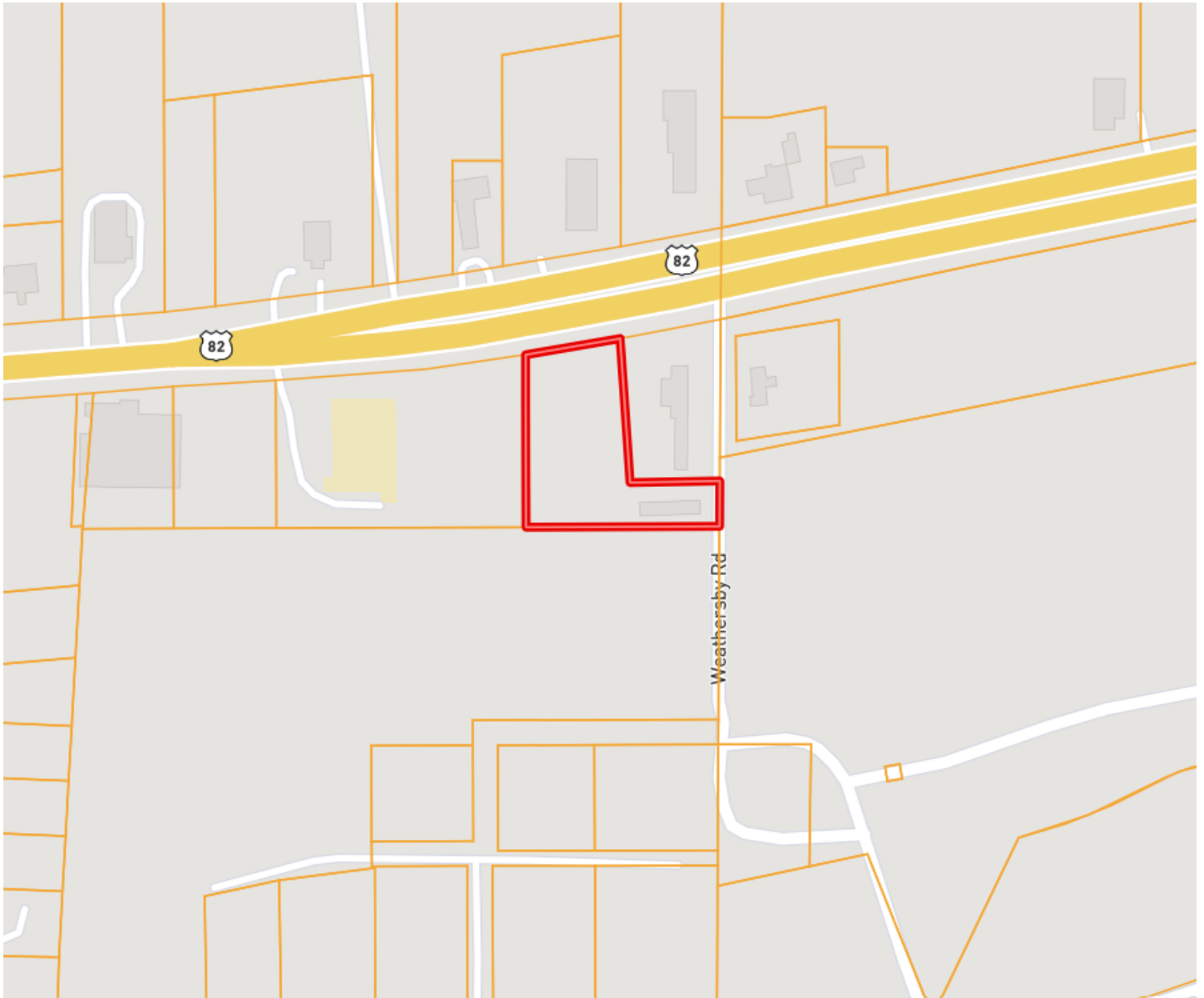
EMERSON LOVELACE, REALTOR®
Emerson@TomSmithLand.com
662.441.2500 **office** | 662.715.3302 **cell**



TomSmithLandandHomes.com

Information is believed to be accurate but not guaranteed.

Ownership Map



Call me today!

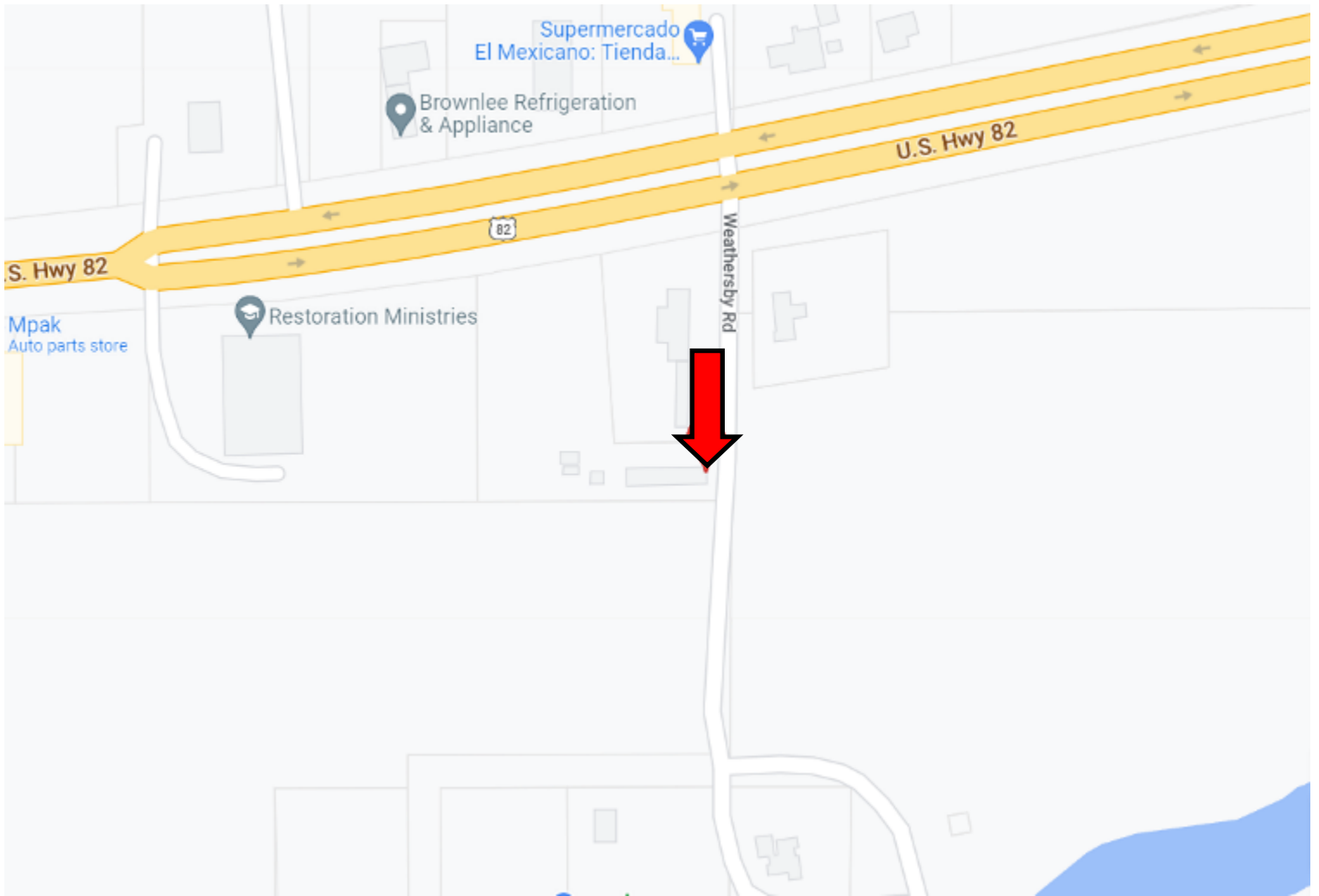
EMERSON LOVELACE, REALTOR®
Emerson@TomSmithLand.com
662.441.2500 **office** | 662.715.3302 **cell**



TomSmithLandandHomes.com

Information is believed to be accurate but not guaranteed.

Directional Map



Address: 110 Weathersby Road Indianola, MS 38751

Directions from the intersection of Hwy 49 & Hwy 82 in Indianola, MS: Travel South on Hwy 82 for approximately 0.4 miles. Turn right onto Weathersby Road and in 430 feet the shop will be on the right. [Click for Google Maps.](#)

Call me today!

EMERSON LOVELACE, REALTOR®
Emerson@TomSmithLand.com
662.441.2500 **office** | 662.715.3302 **cell**



TomSmithLandandHomes.com

Information is believed to be accurate but not guaranteed.