



80+/- Acre Timber Tract with Road Frontage Jasper County, MS



\$232,000

County Road 5033, Heidelberg, MS 39439

Looking for an exceptional investment opportunity in Jasper County, MS? Look no further than this stunning 80+/- acre lot, loaded with 12-year-old plantation pines and recently thinned last year. With 1,330+/- feet of road frontage on CR 5033, this property is perfect for those seeking a timber investment, hunting or recreational property, or a beautiful homesite development. This property boasts an unbeatable location, with electricity available at the street, a small creek running through the property, making it an ideal spot to build your dream home or to invest in your future. The recently thinned pines ensures that your investment is protected, while providing opportunities for growth and revenue. With easy access to the highway, there's no better place to invest in your future!

Directions from Exxon on Exit 113 in Heidelberg, MS: Head northeast on Frontage Rd toward Pine Ave; Turn left onto MS-528 W/Pine Ave and travel 1 mile; Turn right onto MS-503 N. and travel 1.2 miles. Turn right onto Co Rd 5033, after .5 miles, the property will be on your left.



Call me today!

CLAY SIMMONS, REALTOR®
Clay@TomSmithHomes.com
601.898.2772 office | 601.672.6864 cell



TomSmithLandandHomes.com

Information is believed to be accurate but not guaranteed.



Call me today!

CLAY SIMMONS, REALTOR®
 Clay@TomSmithHomes.com
 601.898.2772 office | 601.672.6864 cell



TomSmithLandandHomes.com

Information is believed to be accurate but not guaranteed.



Call me today!

CLAY SIMMONS, REALTOR®
 Clay@TomSmithHomes.com
 601.898.2772 office | 601.672.6864 cell



TomSmithLandandHomes.com

Information is believed to be accurate but not guaranteed.



Aerial Map



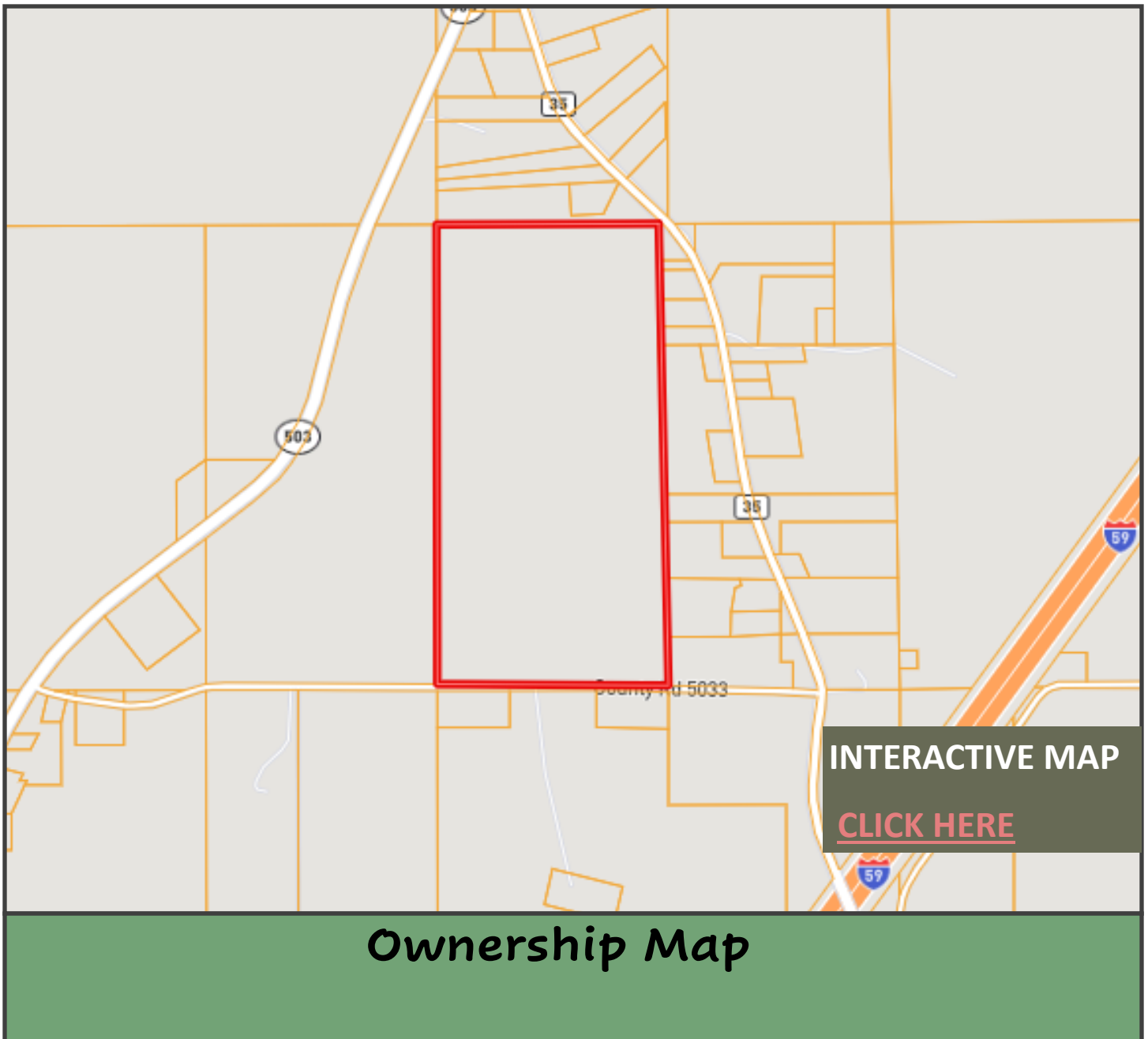
Call me today!

CLAY SIMMONS, REALTOR®
Clay@TomSmithHomes.com
601.898.2772 office | 601.672.6864 cell



TomSmithLandandHomes.com

Information is believed to be accurate but not guaranteed.



INTERACTIVE MAP

[CLICK HERE](#)

Ownership Map



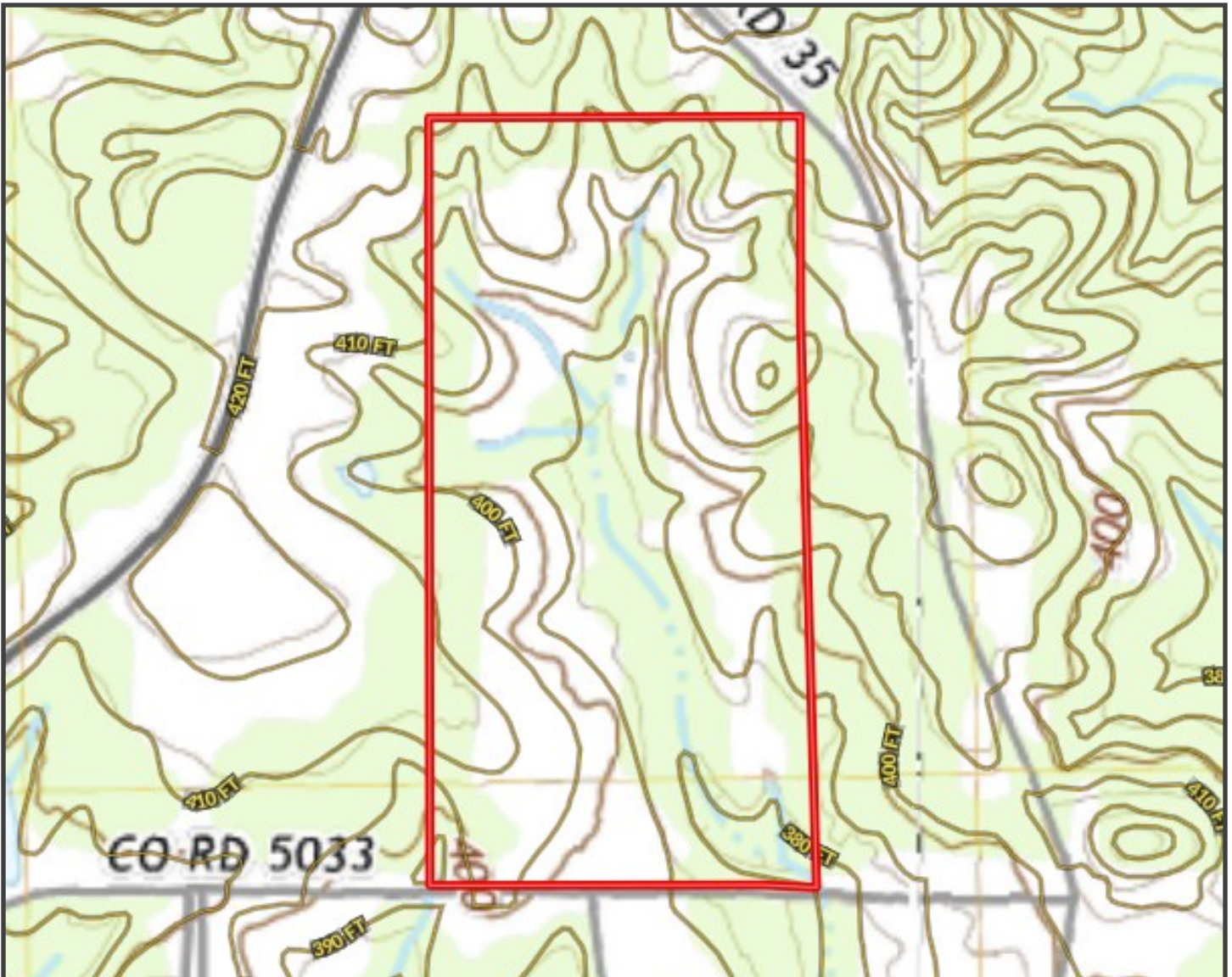
Call me today!

CLAY SIMMONS, REALTOR®
Clay@TomSmithHomes.com
601.898.2772 office | 601.672.6864 cell



TomSmithLandandHomes.com

Information is believed to be accurate but not guaranteed.



Topography Map



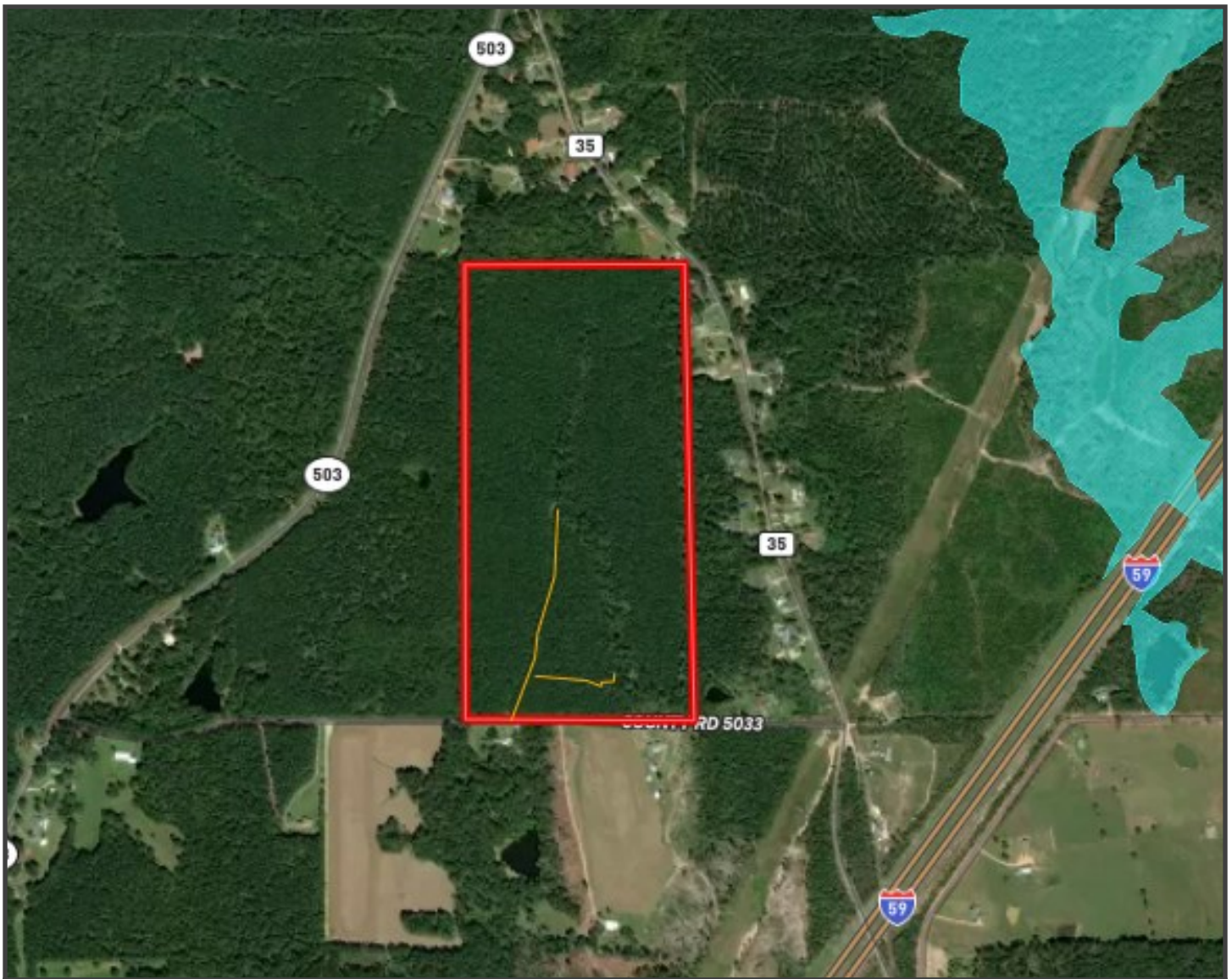
Call me today!

CLAY SIMMONS, REALTOR®
Clay@TomSmithHomes.com
601.898.2772 office | 601.672.6864 cell



TomSmithLandandHomes.com

Information is believed to be accurate but not guaranteed.



Flood Map



Call me today!

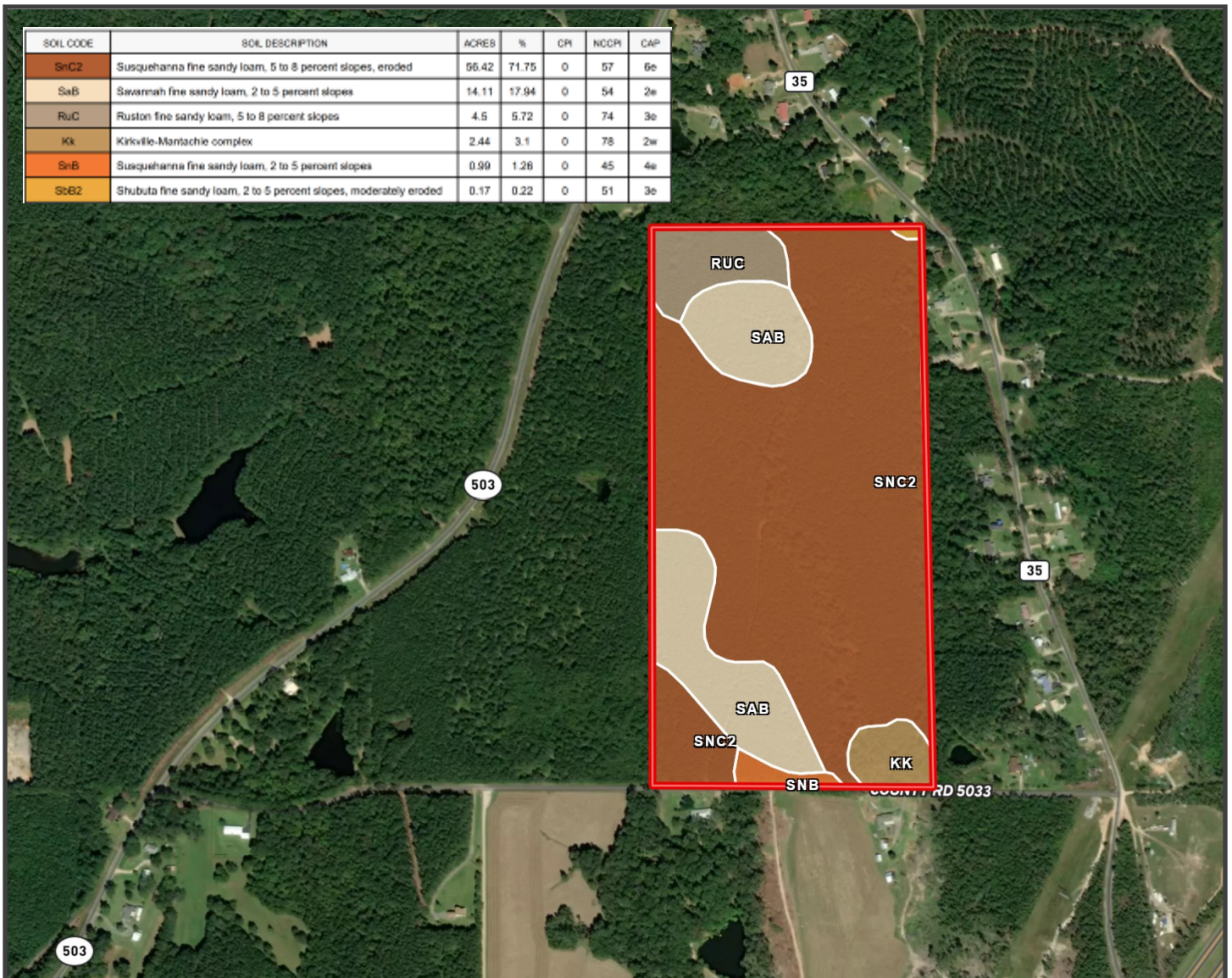
CLAY SIMMONS, REALTOR®
Clay@TomSmithHomes.com
601.898.2772 office | 601.672.6864 cell



TomSmithLandandHomes.com

Information is believed to be accurate but not guaranteed.

SOIL CODE	SOIL DESCRIPTION	ACRES	%	CPI	NCCPI	CAP
SnC2	Susquehanna fine sandy loam, 5 to 8 percent slopes, eroded	55.42	71.75	0	57	6e
SaB	Savannah fine sandy loam, 2 to 5 percent slopes	14.11	17.94	0	54	2e
RuC	Ruston fine sandy loam, 5 to 8 percent slopes	4.5	5.72	0	74	3e
Kk	Kirkville-Mantachie complex	2.44	3.1	0	78	2w
SnB	Susquehanna fine sandy loam, 2 to 5 percent slopes	0.99	1.26	0	45	4e
SnB2	Shubuta fine sandy loam, 2 to 5 percent slopes, moderately eroded	0.17	0.22	0	51	3e



Soil Map



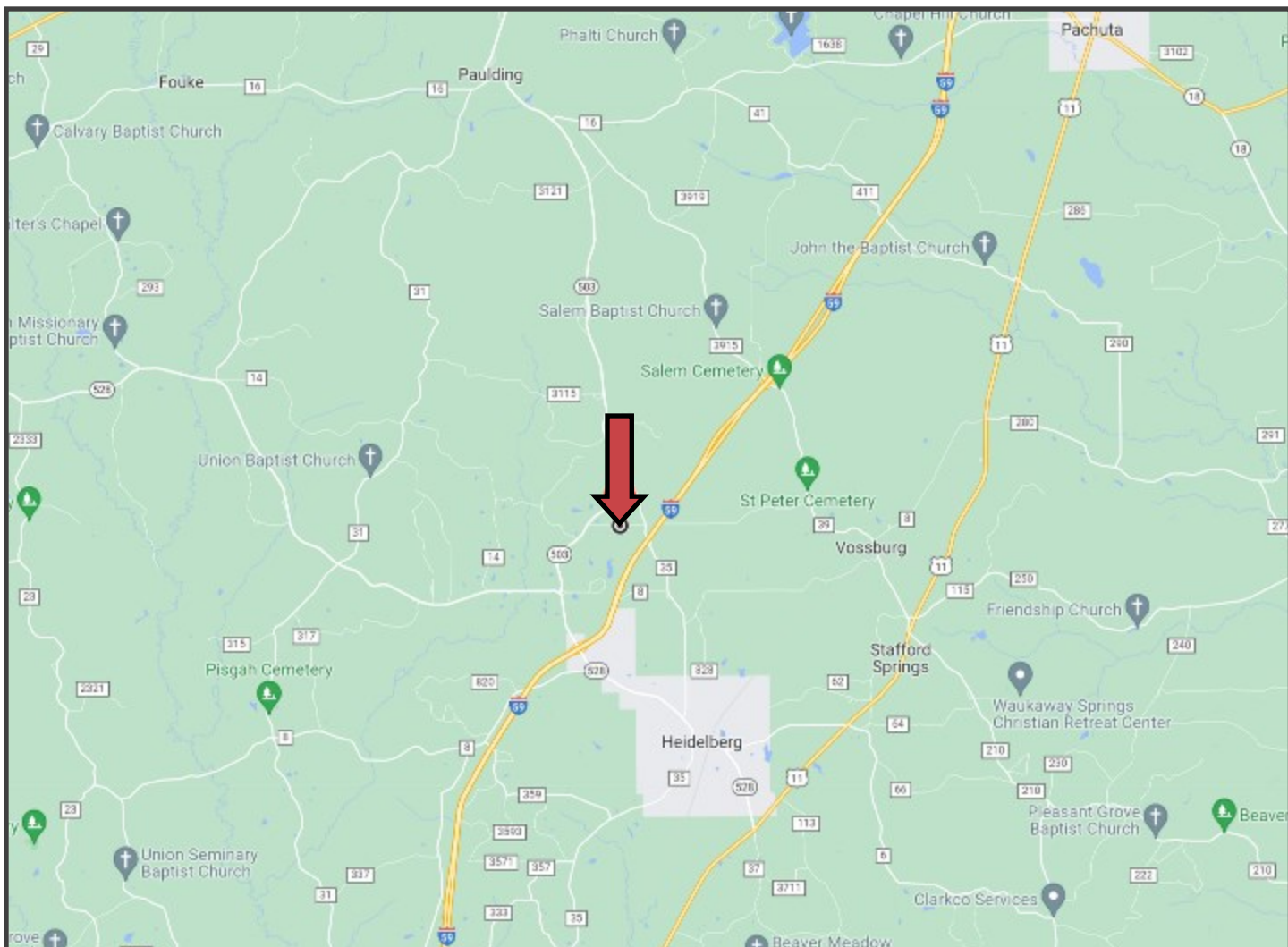
Call me today!

CLAY SIMMONS, REALTOR®
 Clay@TomSmithHomes.com
 601.898.2772 office | 601.672.6864 cell



TomSmithLandandHomes.com

Information is believed to be accurate but not guaranteed.



Directional Map

County Road 5033, Heidelberg, MS 39439



Directions from Exxon on Exit 113 in Heidelberg, MS: Head northeast on Frontage Rd toward Pine Ave; Turn left onto MS-528 W/Pine Ave and travel 1 mile; Turn right onto MS-503 N. and travel 1.2 miles. Turn right onto Co Rd 5033, after .5 miles, the property will be on your left.

GOOGLE MAP LINK



Call me today!

CLAY SIMMONS, REALTOR®
 Clay@TomSmithHomes.com
 601.898.2772 office | 601.672.6864 cell



TomSmithLandandHomes.com

Information is believed to be accurate but not guaranteed.