

80+/- Acre Timber Tract with Road Frontage Jasper County, MS



\$215,000

County Road 5033, Heidelberg, MS 39439

Looking for an exceptional investment opportunity in Jasper County, MS? Look no further than this stunning 80+/- acre lot, loaded with 12-year-old plantation pines and recently thinned last year. With 1,330+/- feet of road frontage on CR 5033, this property is perfect for those seeking a timber investment, hunting or recreational property, or a beautiful homesite development. This property boasts an unbeatable location, with electricity available at the street, a small creek running through the property, making it an ideal spot to build your dream home or to invest in your future.

Call Dale Wilds or David Belden to Schedule your private showing!

Directions from Exxon on Exit 113 in Heidelberg, MS: Head northeast on Frontage Rd toward Pine Ave; Turn left onto MS-528 W/Pine Ave and travel 1 mile; Turn right onto MS-503 N. and travel 1.2 miles. Turn right onto Co Rd 5033, after .5 miles, the property will be on your left.



DALE WILDS
REALTOR®

O: 601.898.2772 | C: 662.715.7109
Dale@TomSmithLand.com



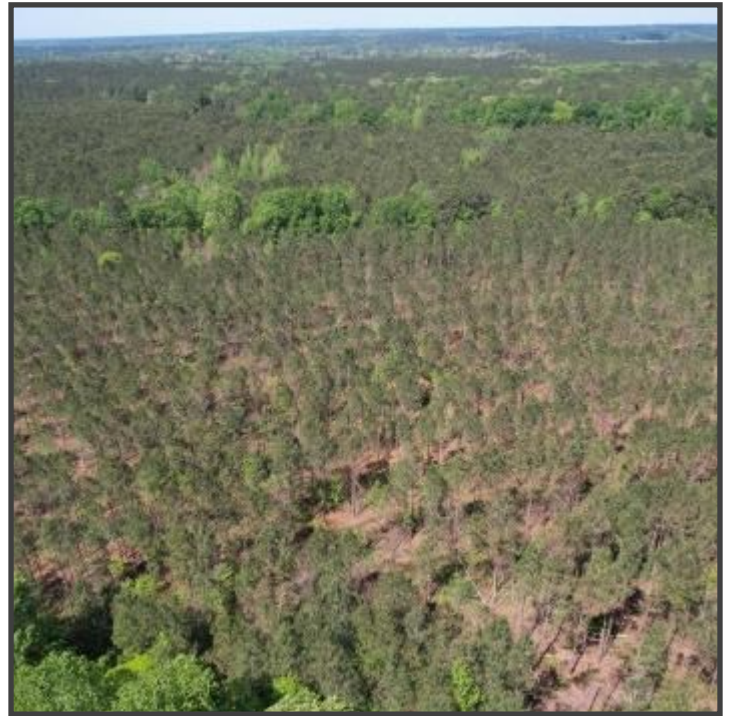
DAVID BELDEN
ALC®, REALTOR®

O: 601.898.2772 | C: 601.415.3884
DBelden@TomSmithLand.com

TomSmithLandandHomes.com

Information is believed to be accurate but not guaranteed





DALE WILDS
REALTOR®

O: 601.898.2772 | C: 662.715.7109
Dale@TomSmithLand.com



DAVID BELDEN
ALC®, REALTOR®

O: 601.898.2772 | C: 601.415.3884
DBelden@TomSmithLand.com

TomSmithLandandHomes.com

Information is believed to be accurate but not guaranteed





DALE WILDS
REALTOR®

O: 601.898.2772 | C: 662.715.7109
Dale@TomSmithLand.com



DAVID BELDEN
ALC®, REALTOR®

O: 601.898.2772 | C: 601.415.3884
DBelden@TomSmithLand.com



Aerial Map



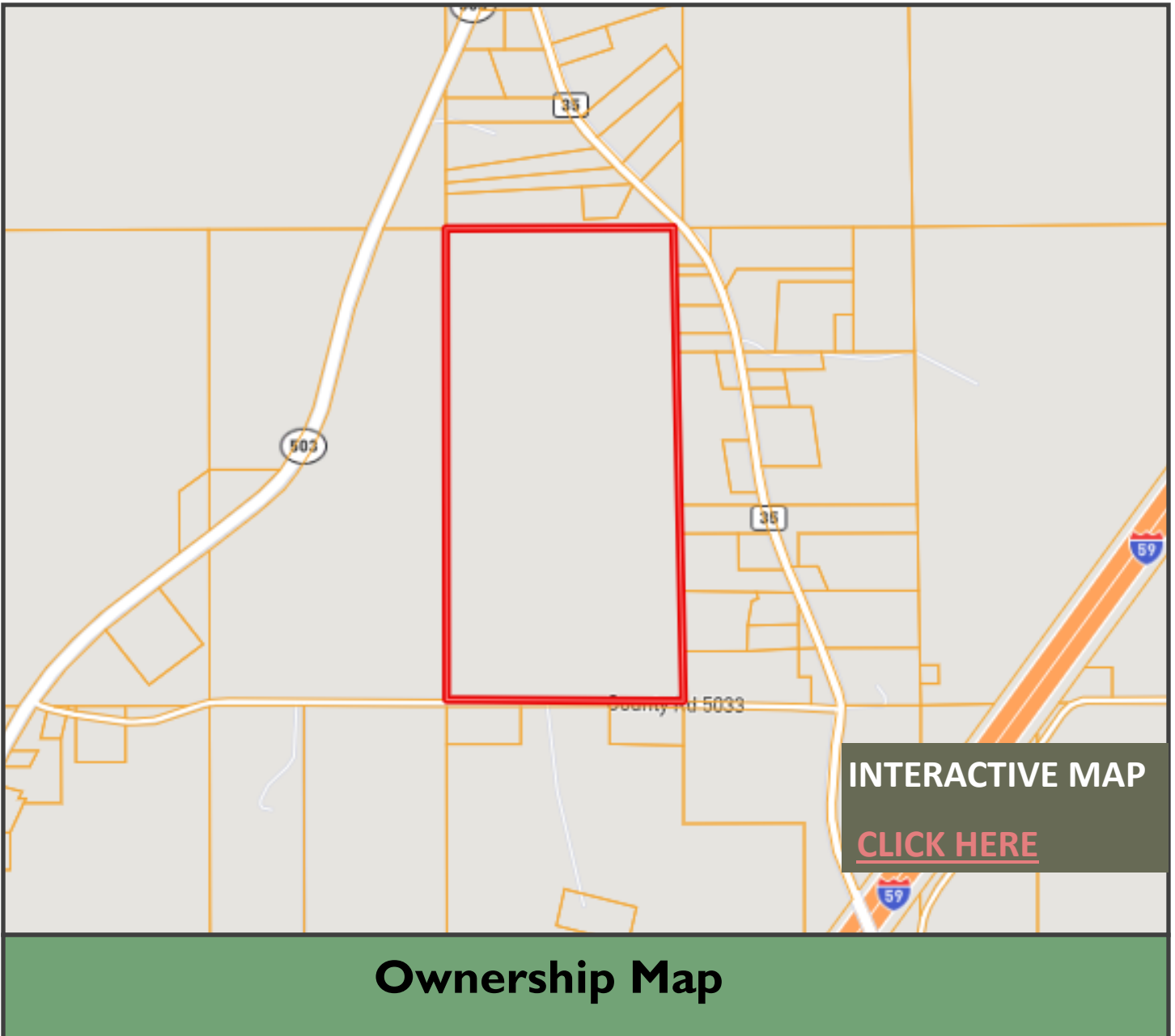
DALE WILDS
REALTOR®

O: 601.898.2772 | C: 662.715.7109
Dale@TomSmithLand.com



DAVID BELDEN
ALC®, REALTOR®

O: 601.898.2772 | C: 601.415.3884
DBelden@TomSmithLand.com



INTERACTIVE MAP

[CLICK HERE](#)

Ownership Map



DALE WILDS
REALTOR®

O: 601.898.2772 | C: 662.715.7109
Dale@TomSmithLand.com

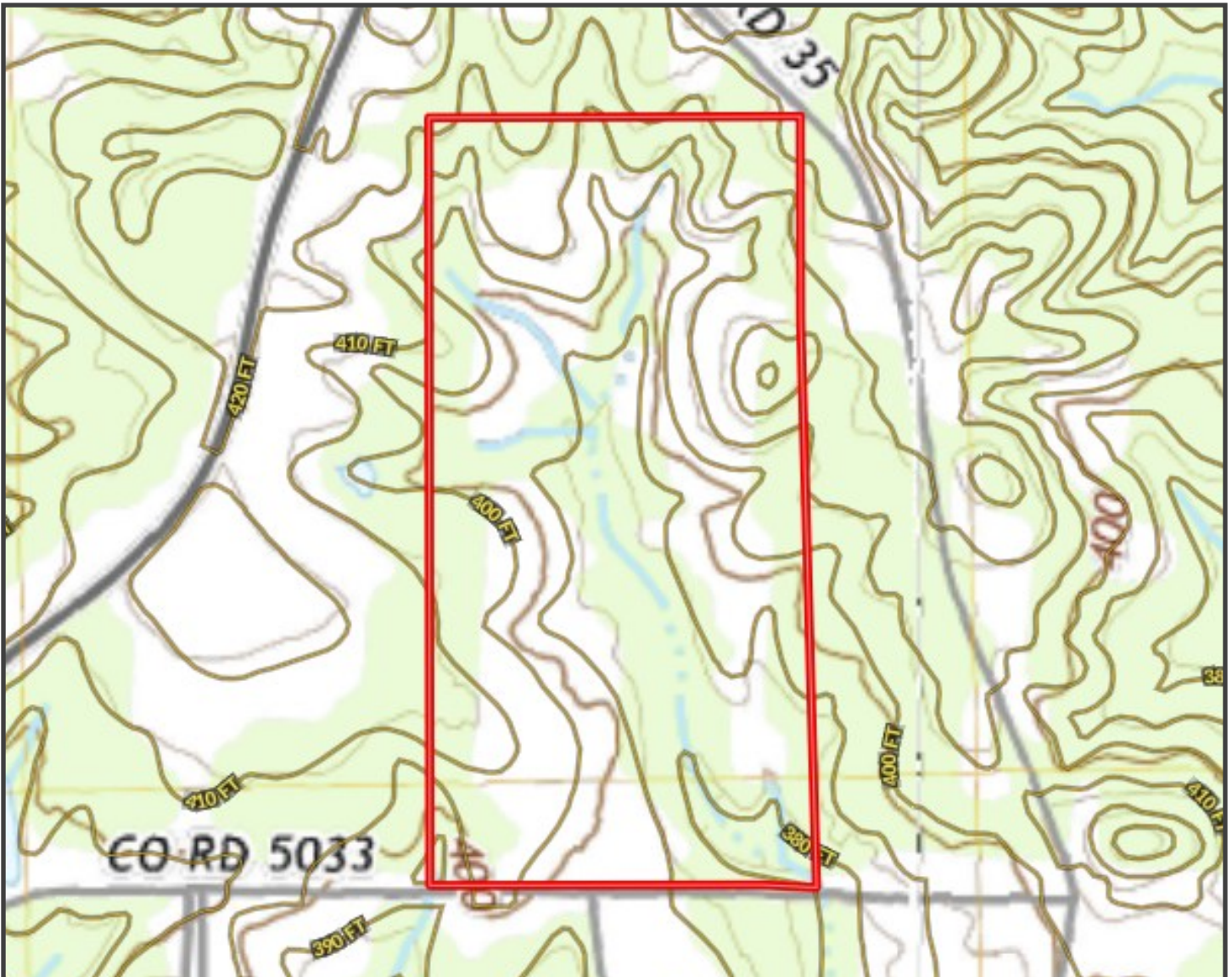


Expect More. Get More.



DAVID BELDEN
ALC®, REALTOR®

O: 601.898.2772 | C: 601.415.3884
DBelden@TomSmithLand.com



Topography Map



DALE WILDS
REALTOR®

O: 601.898.2772 | C: 662.715.7109
Dale@TomSmithLand.com



Expect More. Get More.



DAVID BELDEN
ALC®, REALTOR®

O: 601.898.2772 | C: 601.415.3884
DBelden@TomSmithLand.com

TomSmithLandandHomes.com

Information is believed to be accurate but not guaranteed





Flood Map



DALE WILDS
REALTOR®

O: 601.898.2772 | C: 662.715.7109
Dale@TomSmithLand.com



DAVID BELDEN
ALC®, REALTOR®

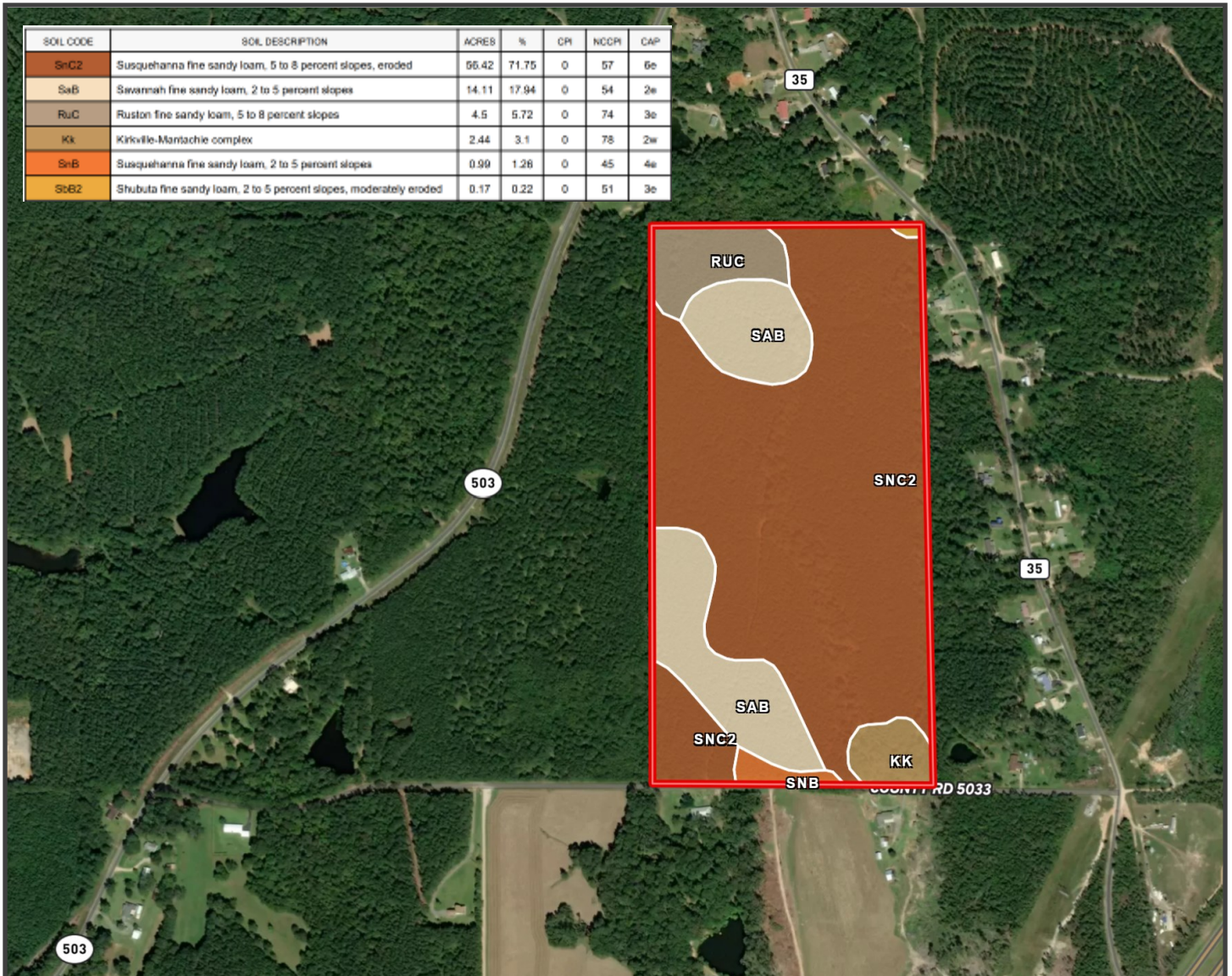
O: 601.898.2772 | C: 601.415.3884
DBelden@TomSmithLand.com

TomSmithLandandHomes.com

Information is believed to be accurate but not guaranteed



SOIL CODE	SOIL DESCRIPTION	ACRES	%	CPI	NCCPI	CAP
SnC2	Susquehanna fine sandy loam, 5 to 8 percent slopes, eroded	66.42	71.75	0	57	6e
SaB	Savannah fine sandy loam, 2 to 5 percent slopes	14.11	17.94	0	54	2e
RuC	Ruston fine sandy loam, 5 to 8 percent slopes	4.5	5.72	0	74	3e
Kk	Kirkville-Mantachie complex	2.44	3.1	0	78	2w
SnB	Susquehanna fine sandy loam, 2 to 5 percent slopes	0.99	1.26	0	45	4e
StB2	Shubuta fine sandy loam, 2 to 5 percent slopes, moderately eroded	0.17	0.22	0	51	3e



Soil Map



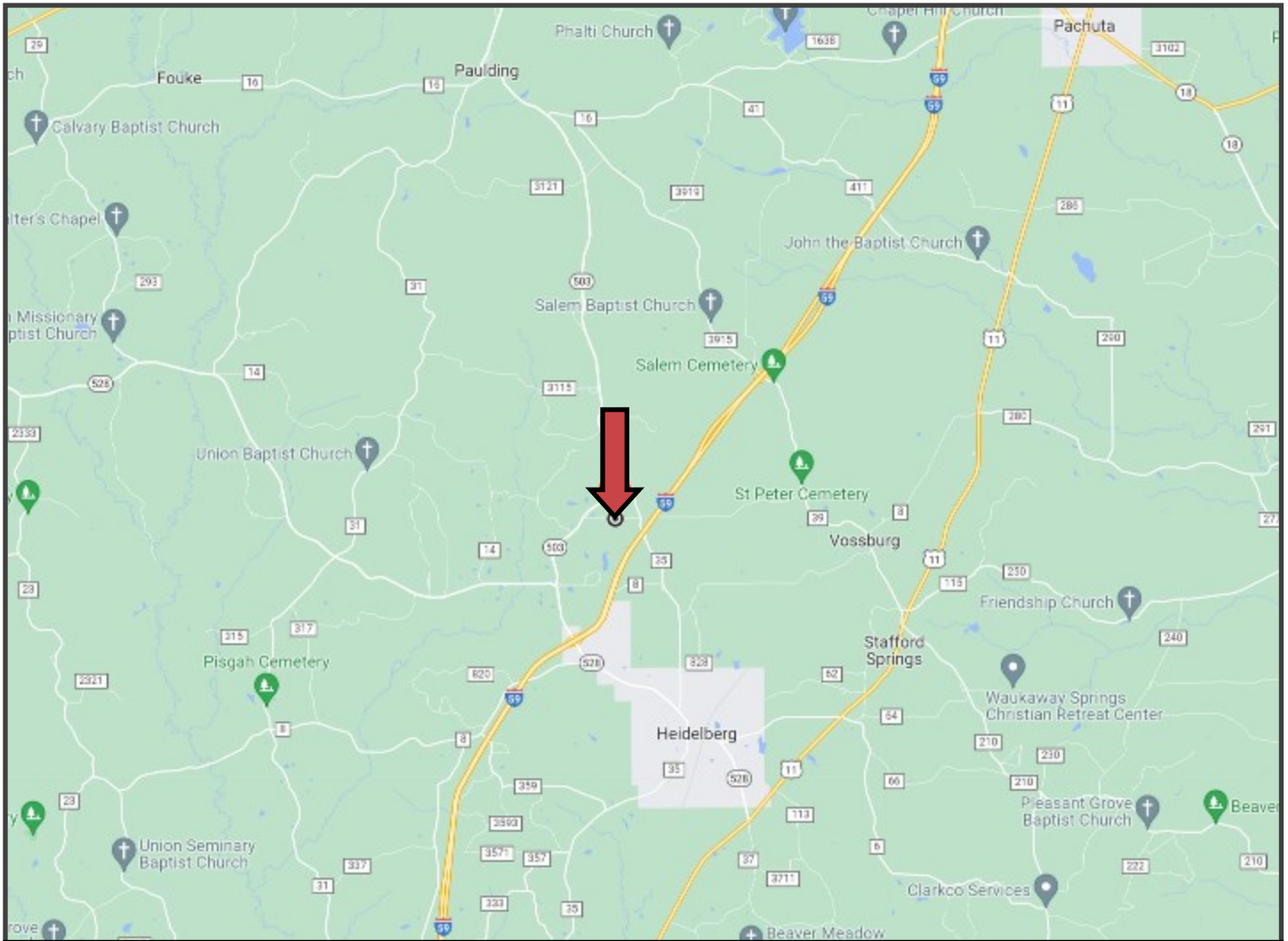
DALE WILDS
REALTOR®

O: 601.898.2772 | C: 662.715.7109
Dale@TomSmithLand.com



DAVID BELDEN
ALC®, REALTOR®

O: 601.898.2772 | C: 601.415.3884
DBelden@TomSmithLand.com



Directional Map

County Road 5033, Heidelberg, MS 39439



Directions from Exxon on Exit 113 in Heidelberg, MS: Head northeast on Frontage Rd toward Pine Ave; Turn left onto MS-528 W/Pine Ave and travel 1 mile; Turn right onto MS-503 N. and travel 1.2 miles. Turn right onto Co Rd 5033, after .5 miles, the property is on your left.

GOOGLE MAP LINK



DALE WILDS
REALTOR®

O: 601.898.2772 | C: 662.715.7109
Dale@TomSmithLand.com



Expect More. Get More.



DAVID BELDEN
ALC®, REALTOR®

O: 601.898.2772 | C: 601.415.3884
DBelden@TomSmithLand.com