

80+/- Acre Timber Tract with Road Frontage Jasper County, MS



\$215,000

County Road 5033, Heidelberg, MS 39439

Looking for an exceptional investment opportunity in Jasper County, MS? Look no further than this stunning 80+/- acre lot, loaded with 12-year-old plantation pines and recently thinned last year. With 1,330+/- feet of road frontage on CR 5033, this property is perfect for those seeking a timber investment, hunting or recreational property, or a beautiful homesite development. This property boasts an unbeatable location, with electricity available at the street, a small creek running through the property, making it an ideal spot to build your dream home or to invest in your future. The recently thinned pines ensures that your investment is protected, while providing opportunities for growth and revenue. With easy access to the highway, there's no better place to invest in your future!

Directions from Exxon on Exit 113 in Heidelberg, MS: Head northeast on Frontage Rd toward Pine Ave; Turn left onto MS-528 W/Pine Ave and travel 1 mile; Turn right onto MS-503 N. and travel 1.2 miles. Turn right onto Co Rd 5033, after .5 miles, the property will be on your left.



CLAY SIMMONS
REALTOR®

O: 601.898.2772 | C: 601.672.6864
Clay@TomSmithHomes.com



DAVID BELDEN
REALTOR®

O: 601.898.2772 | C: 601.415.3884
DBelden@TomSmithLand.com

TomSmithLandandHomes.com

Information is believed to be accurate but not guaranteed.





CLAY SIMMONS
REALTOR®

O: 601.898.2772 | C: 601.672.6864
Clay@TomSmithHomes.com



DAVID BELDEN
REALTOR®

O: 601.898.2772 | C: 601.415.3884
DBelden@TomSmithLand.com

TomSmithLandandHomes.com

Information is believed to be accurate but not guaranteed.





CLAY SIMMONS
REALTOR®

O: 601.898.2772 | C: 601.672.6864
Clay@TomSmithHomes.com



DAVID BELDEN
REALTOR®

O: 601.898.2772 | C: 601.415.3884
DBelden@TomSmithLand.com

TomSmithLandandHomes.com

Information is believed to be accurate but not guaranteed.





Aerial Map



CLAY SIMMONS
REALTOR®

O: 601.898.2772 | C: 601.672.6864
Clay@TomSmithHomes.com



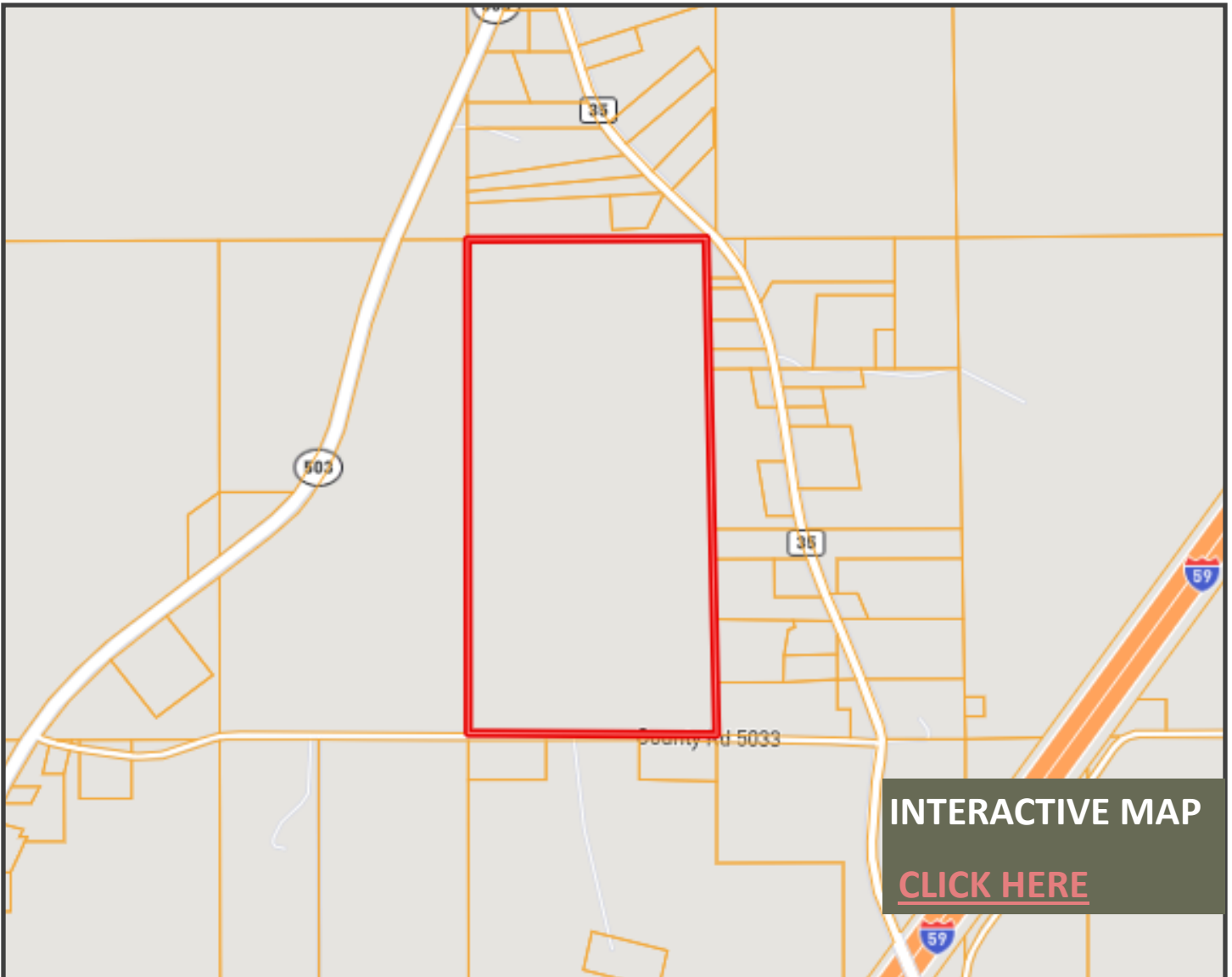
DAVID BELDEN
REALTOR®

O: 601.898.2772 | C: 601.415.3884
DBelden@TomSmithLand.com

TomSmithLandandHomes.com

Information is believed to be accurate but not guaranteed.





Ownership Map



CLAY SIMMONS
REALTOR®

O: 601.898.2772 | C: 601.672.6864
Clay@TomSmithHomes.com



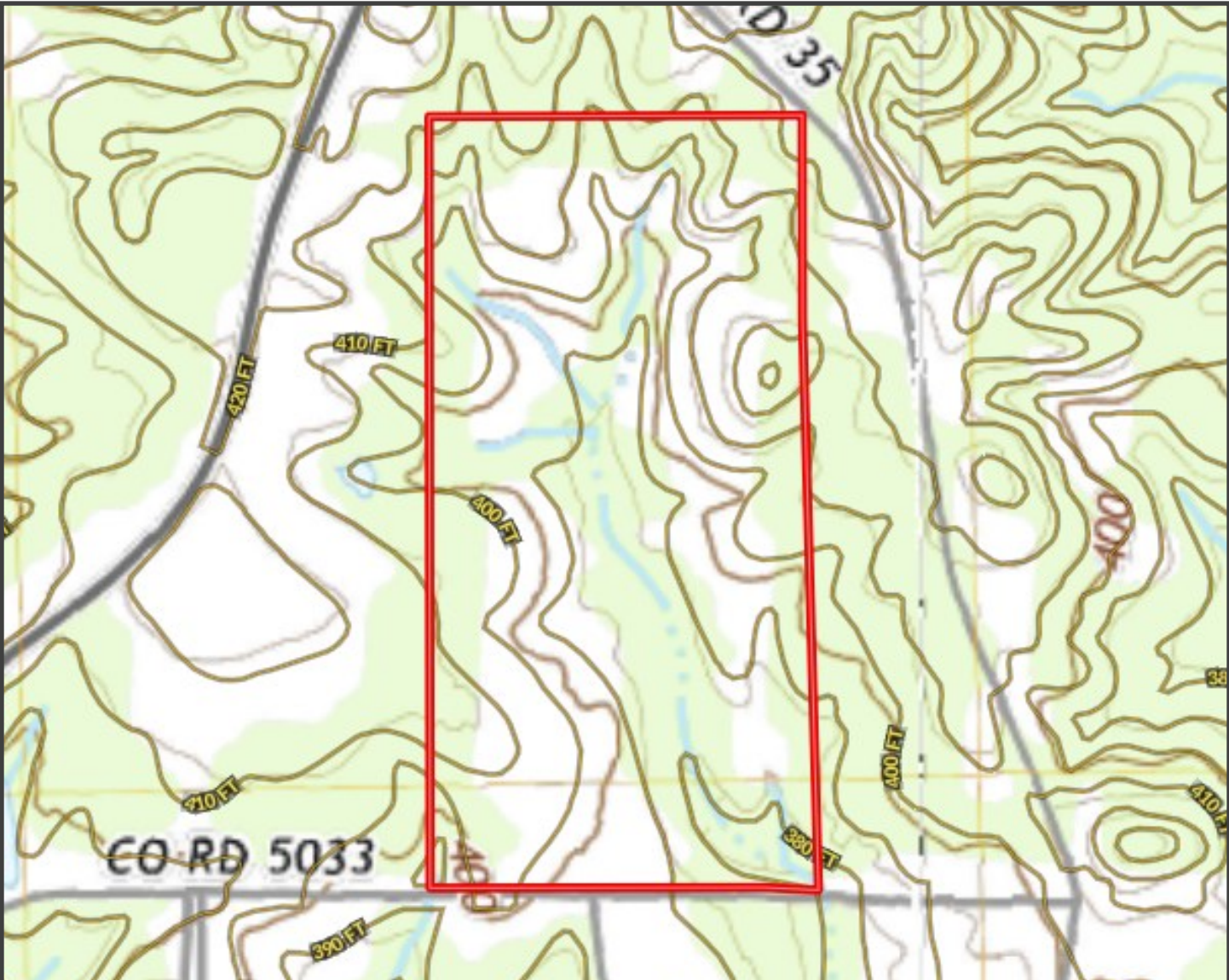
DAVID BELDEN
REALTOR®

O: 601.898.2772 | C: 601.415.3884
DBelden@TomSmithLand.com

TomSmithLandandHomes.com

Information is believed to be accurate but not guaranteed.





Topography Map



CLAY SIMMONS
REALTOR®

O: 601.898.2772 | C: 601.672.6864
Clay@TomSmithHomes.com



Expect More. Get More.



DAVID BELDEN
REALTOR®

O: 601.898.2772 | C: 601.415.3884
DBelden@TomSmithLand.com



Flood Map



CLAY SIMMONS
REALTOR®

O: 601.898.2772 | C: 601.672.6864
Clay@TomSmithHomes.com



DAVID BELDEN
REALTOR®

O: 601.898.2772 | C: 601.415.3884
DBelden@TomSmithLand.com

TomSmithLandandHomes.com

Information is believed to be accurate but not guaranteed.



SOIL CODE	SOIL DESCRIPTION	ACRES	%	CPI	NCCPI	CAP
SnC2	Susquehanna fine sandy loam, 5 to 8 percent slopes, eroded	66.42	71.75	0	57	6e
SaB	Savannah fine sandy loam, 2 to 5 percent slopes	14.11	17.94	0	54	2e
RuC	Ruston fine sandy loam, 5 to 8 percent slopes	4.5	5.72	0	74	3e
Kk	Kirkville-Mantachie complex	2.44	3.1	0	78	2w
SnB	Susquehanna fine sandy loam, 2 to 5 percent slopes	0.99	1.26	0	45	4e
StB2	Shubuta fine sandy loam, 2 to 5 percent slopes, moderately eroded	0.17	0.22	0	51	3e



Soil Map



CLAY SIMMONS
REALTOR®

O: 601.898.2772 | C: 601.672.6864
Clay@TomSmithHomes.com



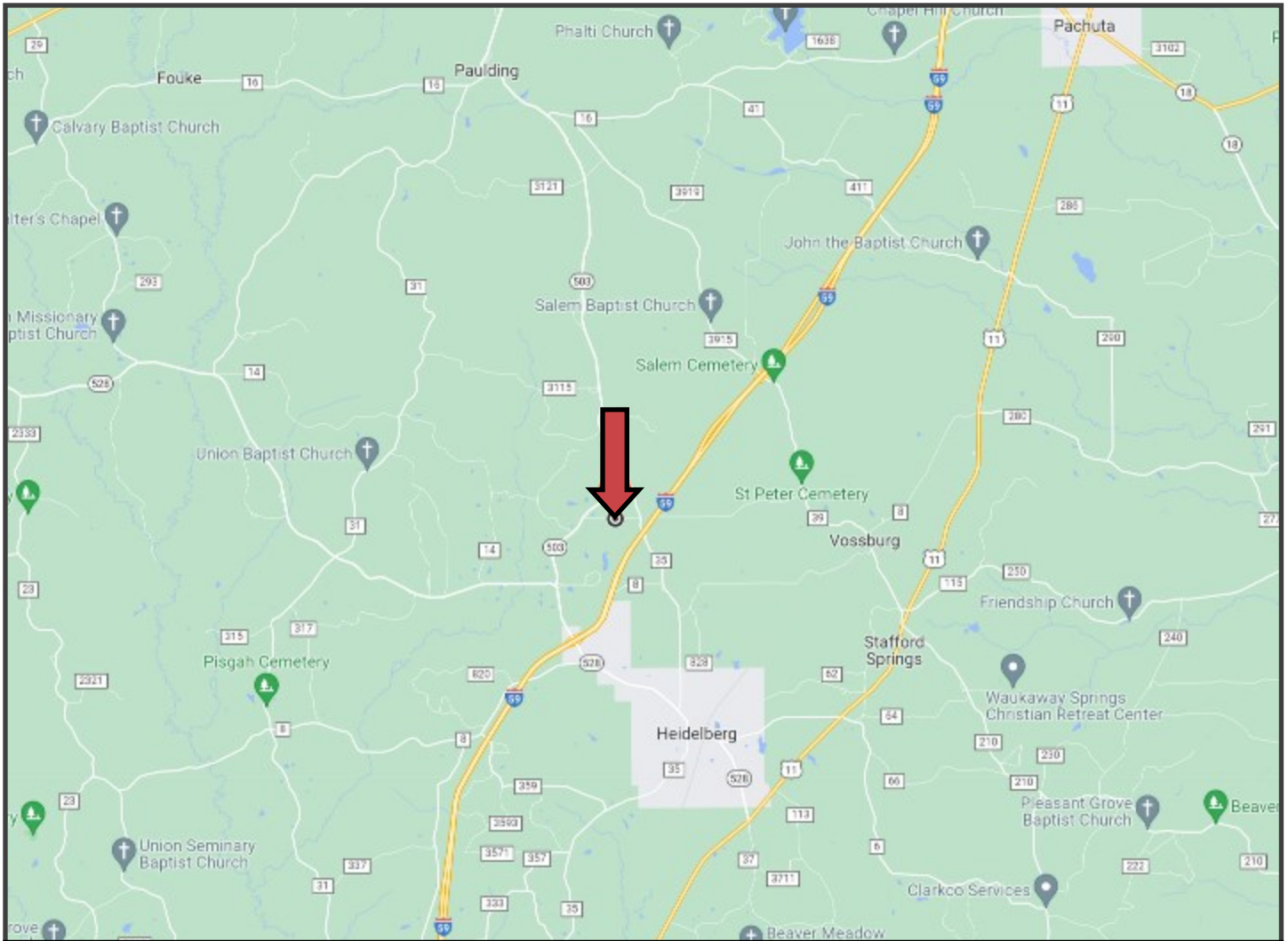
DAVID BELDEN
REALTOR®

O: 601.898.2772 | C: 601.415.3884
DBelden@TomSmithLand.com

TomSmithLandandHomes.com

Information is believed to be accurate but not guaranteed.





Directional Map

County Road 5033, Heidelberg, MS 39439



Directions from Exxon on Exit 113 in Heidelberg, MS: Head northeast on Frontage Rd toward Pine Ave; Turn left onto MS-528 W/Pine Ave and travel 1 mile; Turn right onto MS-503 N. and travel 1.2 miles. Turn right onto Co Rd 5033, after .5 miles, the property will be on your left.

GOOGLE MAP LINK



CLAY SIMMONS
REALTOR®

O: 601.898.2772 | C: 601.672.6864
Clay@TomSmithHomes.com



DAVID BELDEN
REALTOR®

O: 601.898.2772 | C: 601.415.3884
DBelden@TomSmithLand.com