

32± ACRE HUNTING TRACT WITH CAMPHOUSE

JASPER COUNTY, MS



\$225,000

Take a look at this excellent 32± acre tract in Jasper County, MS. This property features a four-bedroom, two-bath cabin that would make for a great hunting camp! The property boasts plenty of deer and turkey signs, making this a great hunting spot for the new owners! Located on a remote road in Heidelberg, MS, this property provides plenty of seclusions while maintaining a manageable distance to amenities. The property also features a skinning shed, mature timber, and frontage on a maintained road. Call Preston Smith for your private showing today!

Directions from the intersection of I-59 and MS-528 in Heidelberg, MS: Travel north on MS-528, in 1.0 mile, turn right onto MS-503, in 2.8 miles, turn left onto unmarked road. In .4 miles the property will be on the right.



CLAY
SIMMONS
REALTOR®

Office: 601.898.2772

Cell: 601.672.6864

Clay@TomSmithHomes.com



A Real Estate Expert You Can Trust

TomSmithLandandHomes.com

Information is believed to be accurate but not guaranteed.





CLAY SIMMONS

REALTOR®

Office: 601.898.2772

Cell: 601.672.6864

Clay@TomSmithHomes.com



A Real Estate Expert You Can Trust

TomSmithLandandHomes.com

Information is believed to be accurate but not guaranteed.





CLAY SIMMONS

REALTOR®

Office: 601.898.2772

Cell: 601.672.6864

Clay@TomSmithHomes.com



Expect More. Get More.

A Real Estate Expert You Can Trust

TomSmithLandandHomes.com

Information is believed to be accurate but not guaranteed.





CLAY SIMMONS

REALTOR®

Office: 601.898.2772

Cell: 601.672.6864

Clay@TomSmithHomes.com



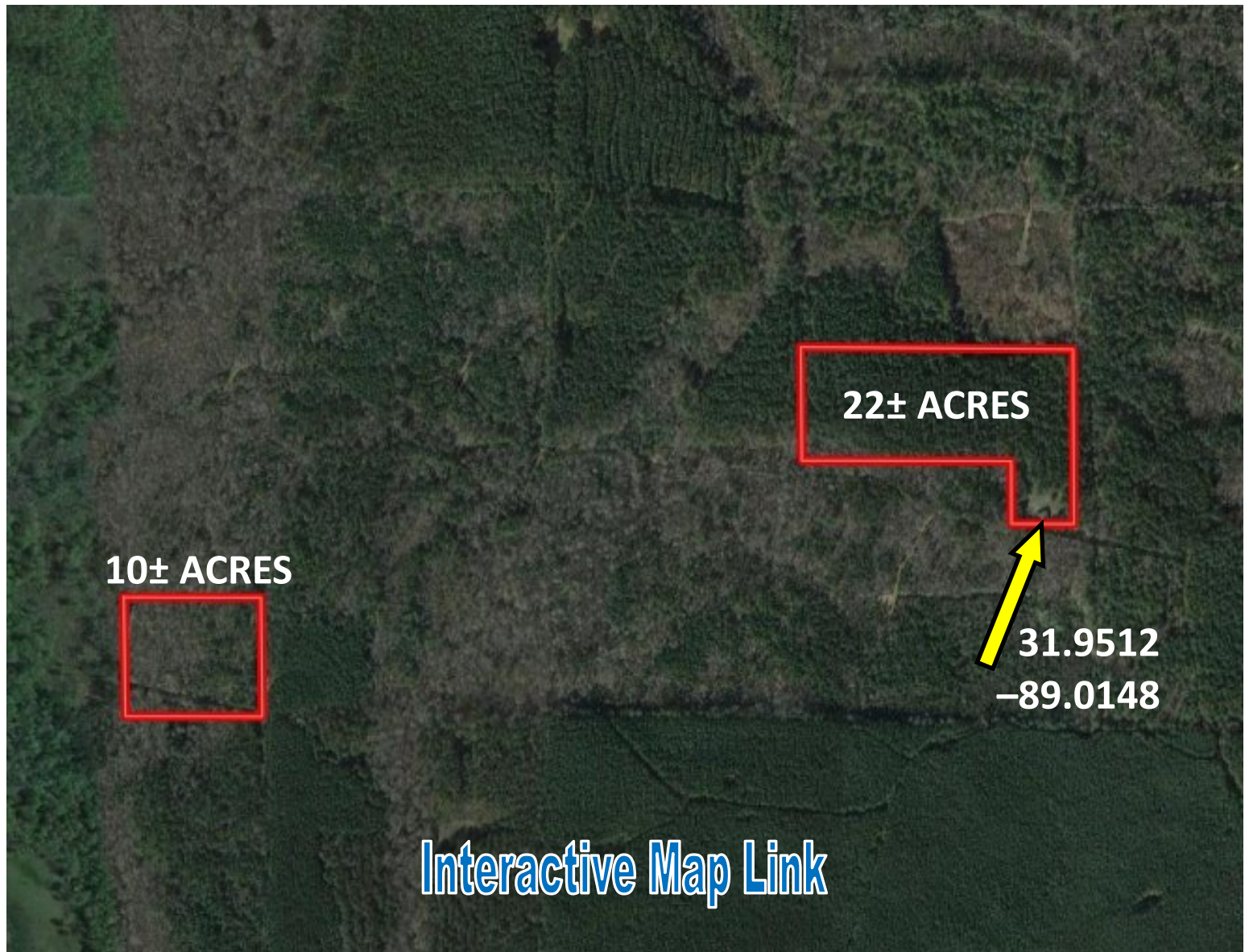
A Real Estate Expert You Can Trust

TomSmithLandandHomes.com

Information is believed to be accurate but not guaranteed.



AERIAL MAP



CLAY SIMMONS
REALTOR®

Office: 601.898.2772

Cell: 601.672.6864

Clay@TomSmithHomes.com



A Real Estate Expert You Can Trust
TomSmithLandandHomes.com

Information is believed to be accurate but not guaranteed.



OWNERSHIP MAP



CLAY SIMMONS
REALTOR®

Office: 601.898.2772

Cell: 601.672.6864

Clay@TomSmithHomes.com

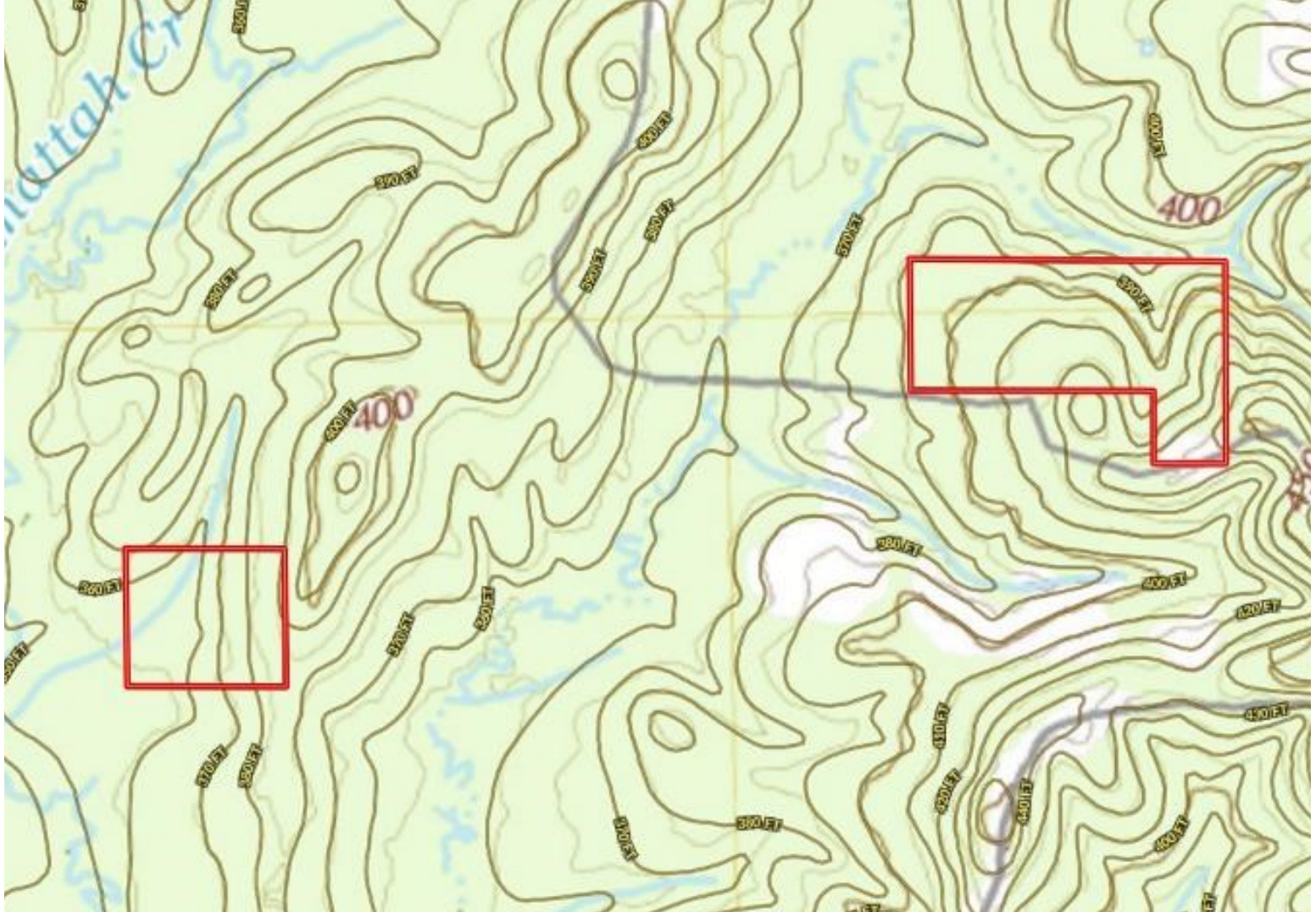


Real Estate Expert You Can Trust

TomSmithLandandHomes.com

Information is believed to be accurate but not guaranteed.

TOPO MAP



CLAY SIMMONS
REALTOR®

Office: 601.898.2772

Cell: 601.672.6864

Clay@TomSmithHomes.com



Expect More. Get More.

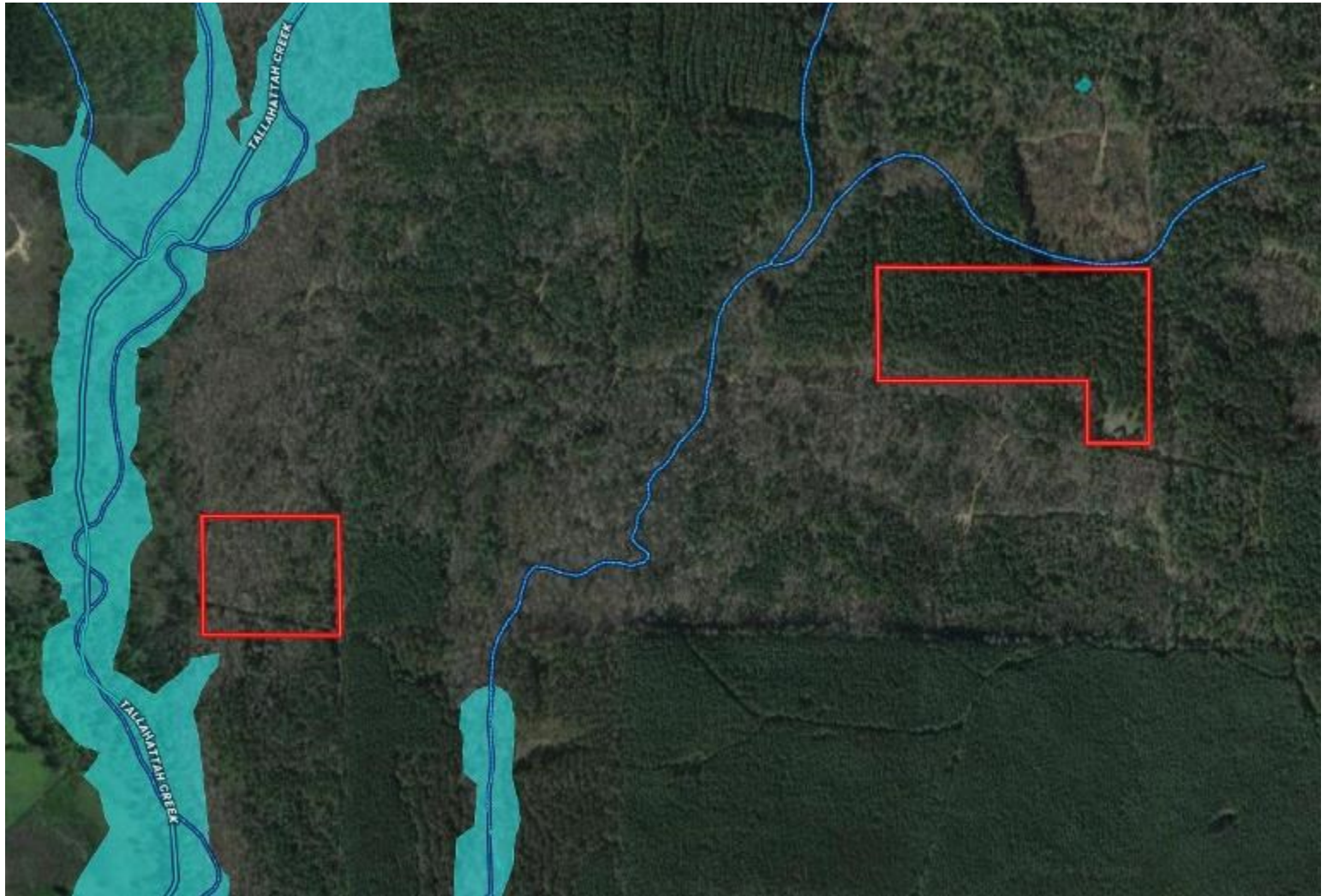
A Real Estate Expert You Can Trust

TomSmithLandandHomes.com

Information is believed to be accurate but not guaranteed.



FLOODPLAIN MAP



CLAY SIMMONS
REALTOR®

Office: 601.898.2772

Cell: 601.672.6864

Clay@TomSmithHomes.com



A Real Estate Expert You Can Trust

TomSmithLandandHomes.com

Information is believed to be accurate but not guaranteed.



SOIL MAP



CLAY SIMMONS
REALTOR®

Office: 601.898.2772

Cell: 601.672.6864

Clay@TomSmithHomes.com



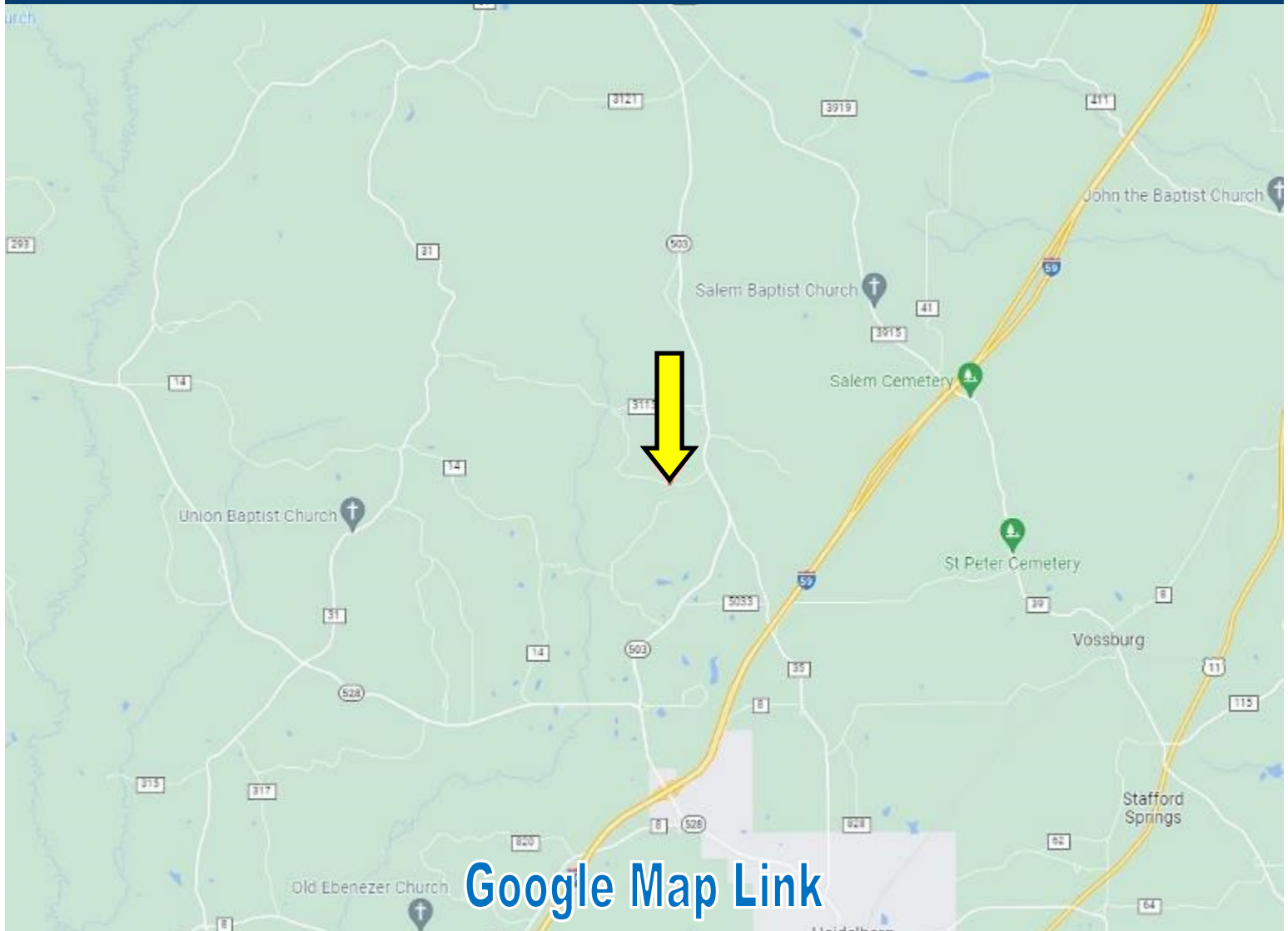
A Real Estate Expert You Can Trust

TomSmithLandandHomes.com

Information is believed to be accurate but not guaranteed.



DIRECTIONAL MAP



[Google Map Link](#)

Directions from the intersection of I-59 and MS-528 in Heidelberg, MS: Travel north on MS-528, in 1.0 mile, turn right onto MS-503, in 2.8 miles, turn left onto unmarked road. In .4 miles the property will be on the right.



CLAY
SIMMONS
REALTOR®

Office: 601.898.2772

Cell: 601.672.6864

Clay@TomSmithHomes.com



A Real Estate Expert You Can Trust

TomSmithLandandHomes.com

Information is believed to be accurate but not guaranteed.

