

60+/- ACRE DEER HUNTING PARADISE COPIAH COUNTY, MS



1195 GOZA-STEGALL ROAD
HAZLEHURST, MS 39083

\$247,500

Are you looking for a great recreational tract? Here it is! This exceptional 60+/- acre recreational property in Copiah County, MS, is what you have been looking for. This property is all about deer hunting and was developed for just that. The property boasts a combination of thick pines, mature hardwoods, internal trails, large food plots, feeders, and a pond. This property has been allowed to grow thick, providing a wealth of natural high protein forage and hardwood mast, checking all the boxes for whitetail management. The 4+/- acre food plot, the largest of three, offers multiple locations for bow stands and box blinds for longer-range shots. The adjoining hunting club has been on a management program for years, and numerous mature deer utilize the property. The furnished two-bedroom camp is cozy and warm, with a large front porch and utility room. An attached shed provides a spot to take care of your harvest out of the wind and weather.

Directions from the intersection of I-55 and MS-28 in Hazlehurst, MS: Travel west on MS-28 for 2.6 miles. Turn right onto Old Port Gibson Road and travel for 5.8 miles. Turn right onto Goza-Stegall Road and travel for .9 miles. The property will be on the left.

[GOOGLE MAP LINK](#)

Call me today!

CLIF CANNON, REALTOR®

Clif@TomSmithLand.com

601.990.5070 office | 601.565.1070 cell



TomSmithLandandHomes.com

Information is believed to be accurate but not guaranteed.



Call me today!

CLIF CANNON, REALTOR®

Clif@TomSmithLand.com

601.990.5070 **office** | 601.565.1070 **cell**



Expect More. Get More.

TomSmithLandandHomes.com

Information is believed to be accurate but not guaranteed.



Call me today!

CLIF CANNON, REALTOR®

Clif@TomSmithLand.com

601.990.5070 **office** | 601.565.1070 **cell**



Expect More. Get More.

TomSmithLandandHomes.com

Information is believed to be accurate but not guaranteed.



CLIF CANNON, REALTOR®
Clif@TomSmithLand.com
601.990.5070 **office** | 601.565.1070 **cell**

**Tom
Smith
LAND AND
HOMES**

Expect More. Get More.

TomSmithLandandHomes.com

Information is believed to be accurate but not guaranteed.



Call me today!

CLIF CANNON, REALTOR®

Clif@TomSmithLand.com

601.990.5070 **office** | 601.565.1070 **cell**

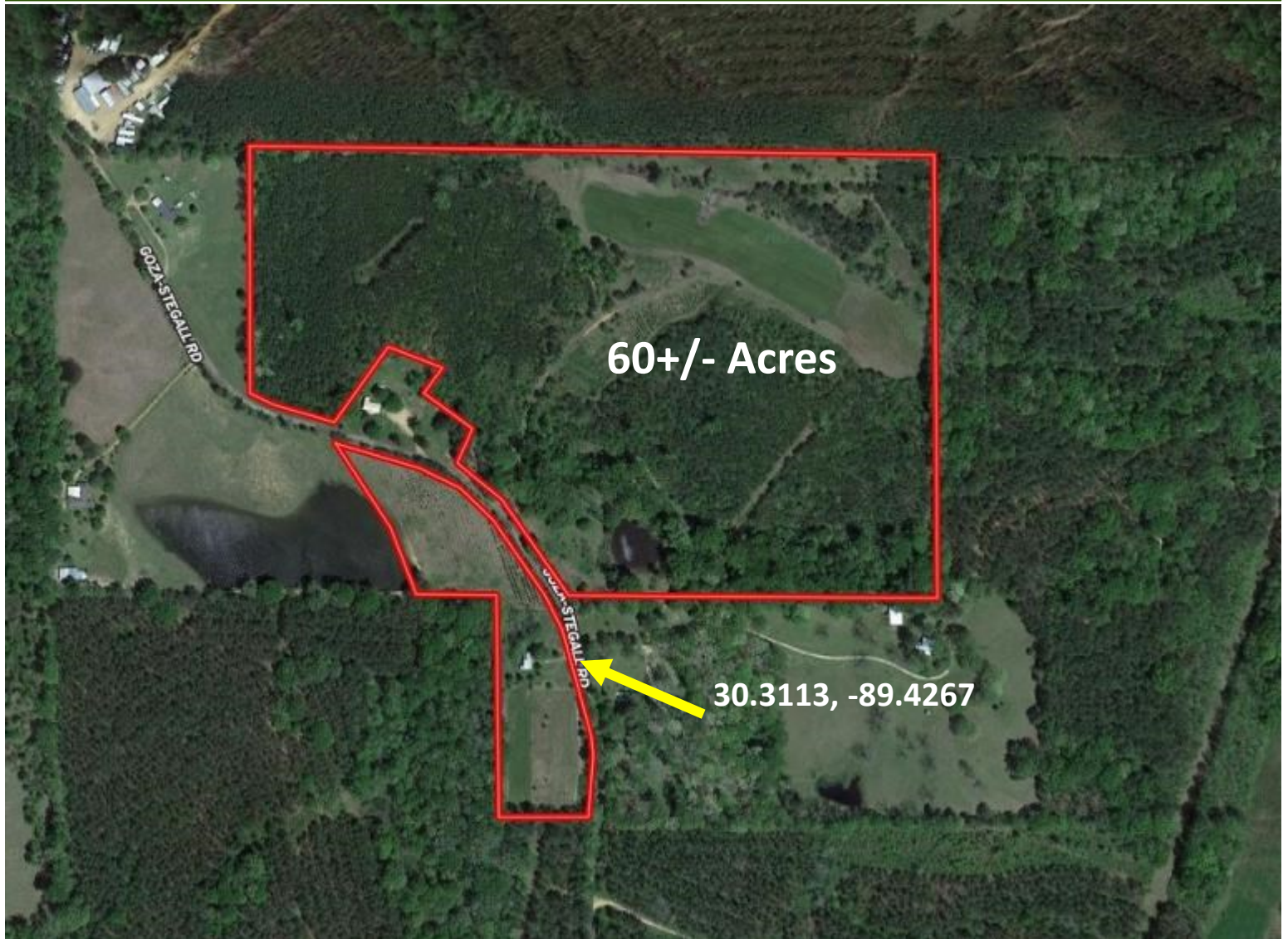


Expect More. Get More.

TomSmithLandandHomes.com

Information is believed to be accurate but not guaranteed.

AERIAL MAP



[Interactive Map](#)

Call me today!

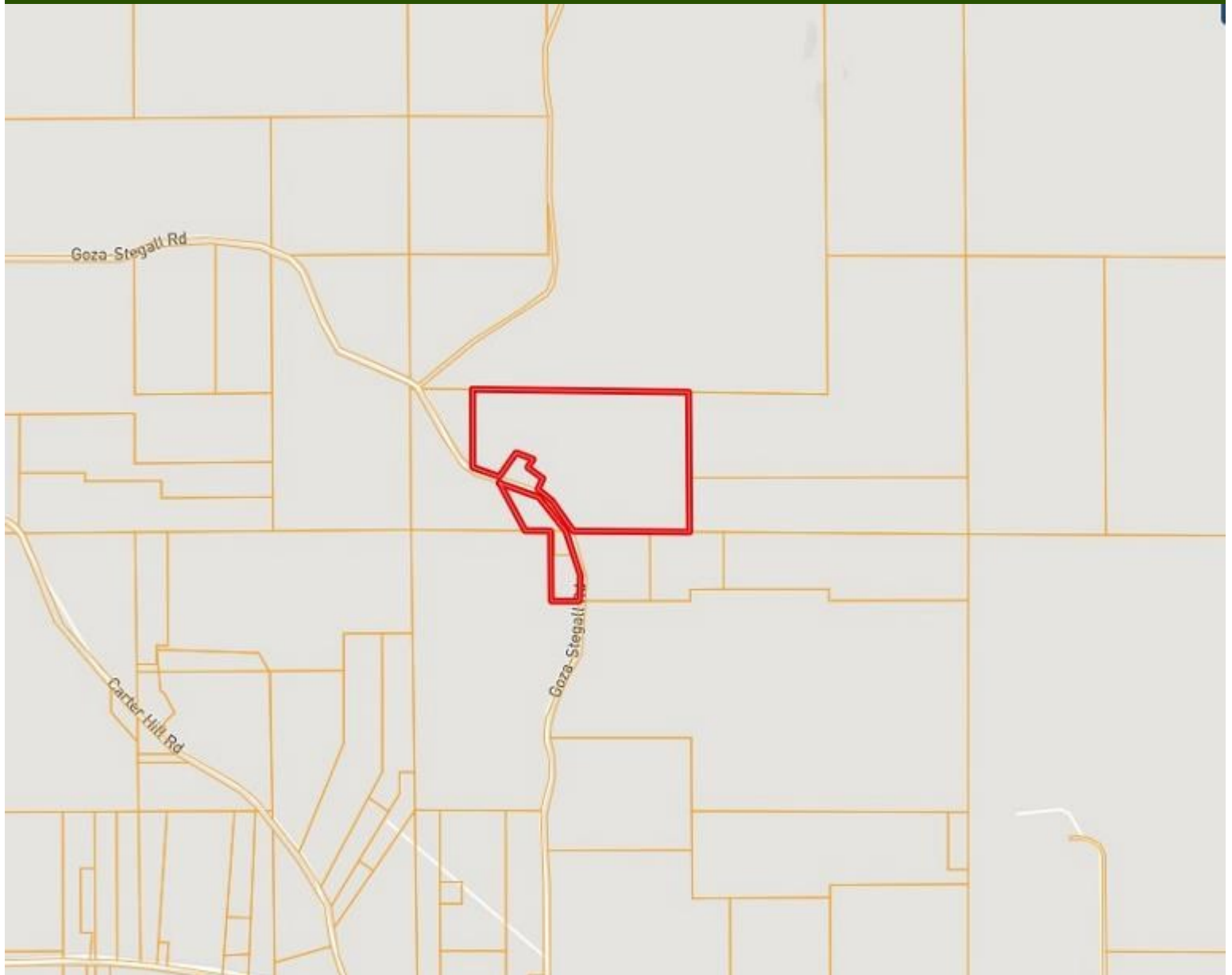
CLIF CANNON, REALTOR®
Clif@TomSmithLand.com
601.990.5070 **office** | 601.565.1070 **cell**



TomSmithLandandHomes.com

Information is believed to be accurate but not guaranteed.

Ownership Map



Call me today!

CLIF CANNON, REALTOR®

Clif@TomSmithLand.com

601.990.5070 **office** | 601.565.1070 **cell**

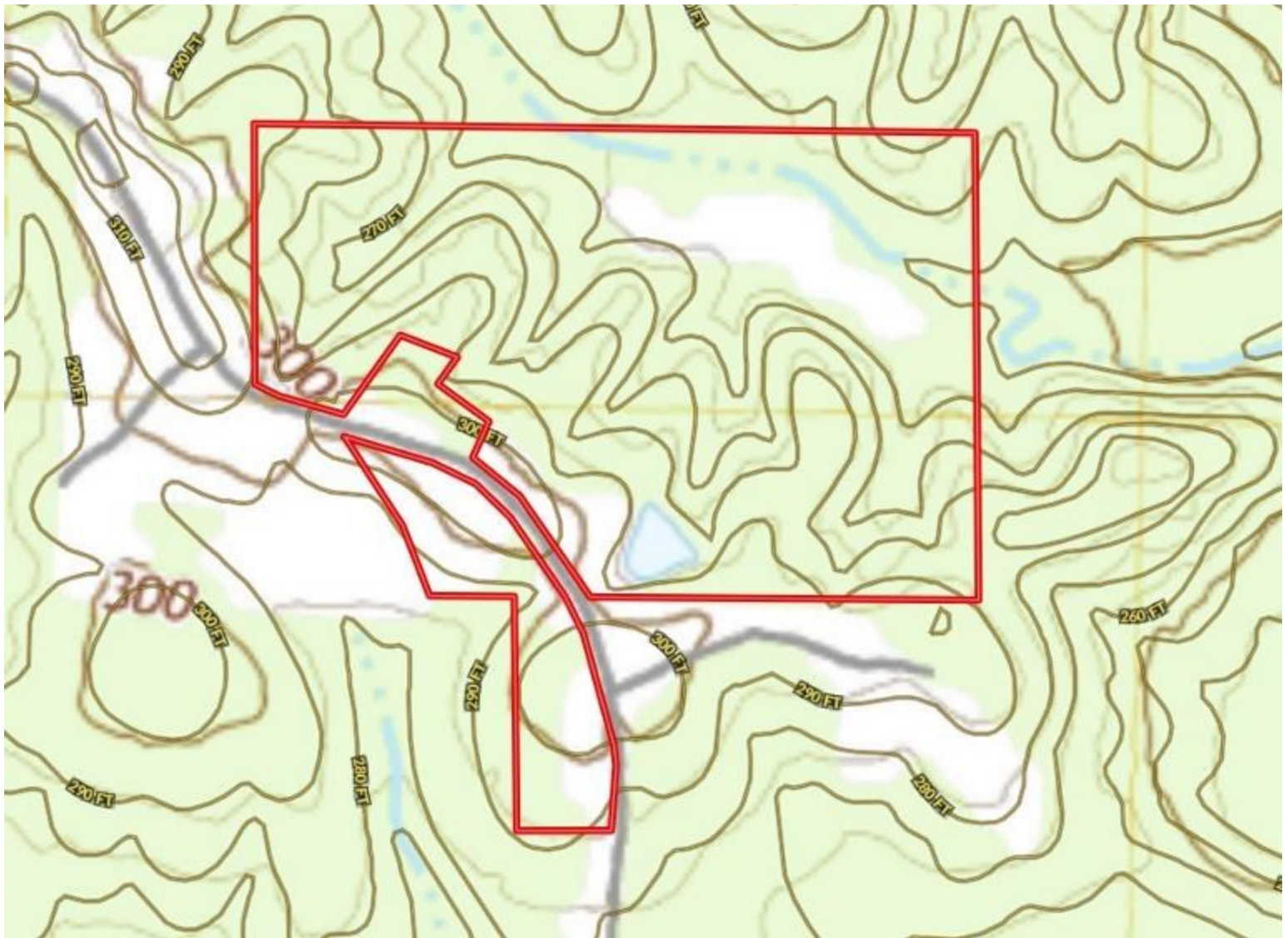


Expect More. Get More.

TomSmithLandandHomes.com

Information is believed to be accurate but not guaranteed.

TOPOGRAPHIC MAP



Call me today!

CLIF CANNON, REALTOR®

Clif@TomSmithLand.com

601.990.5070 **office** | 601.565.1070 **cell**

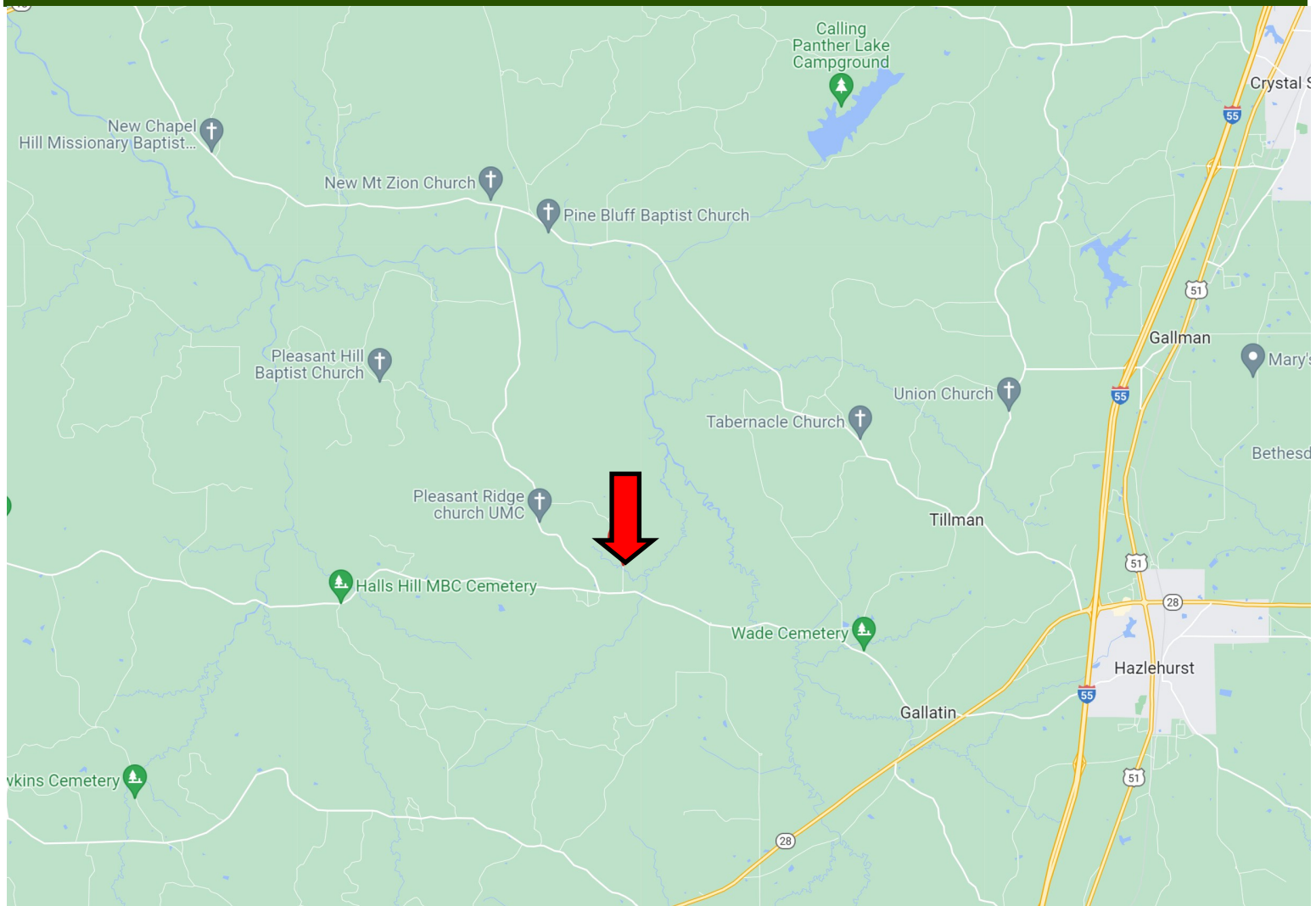


Expect More. Get More.

TomSmithLandandHomes.com

Information is believed to be accurate but not guaranteed.

Directional Map



Directions from the intersection of I-55 and MS-28 in Hazlehurst, MS: Travel west on MS-28 for 2.6 miles. Turn right onto Old Port Gibson Road and travel for 5.8 miles. Turn right onto Goza-Stegall Road and travel for .9 miles. The property will be on the left. [GOOGLE MAP LINK](#)

1195 GOZA-STEGALL ROAD
HAZLEHURST, MS 39083



Call me today!

CLIF CANNON, REALTOR®
Clif@TomSmithLand.com
601.990.5070 office | 601.565.1070 cell



TomSmithLandandHomes.com

Information is believed to be accurate but not guaranteed.