

Lebanon Pine Grove Road / 149.61 Acres

Mississippi, 149.61 AC +/-

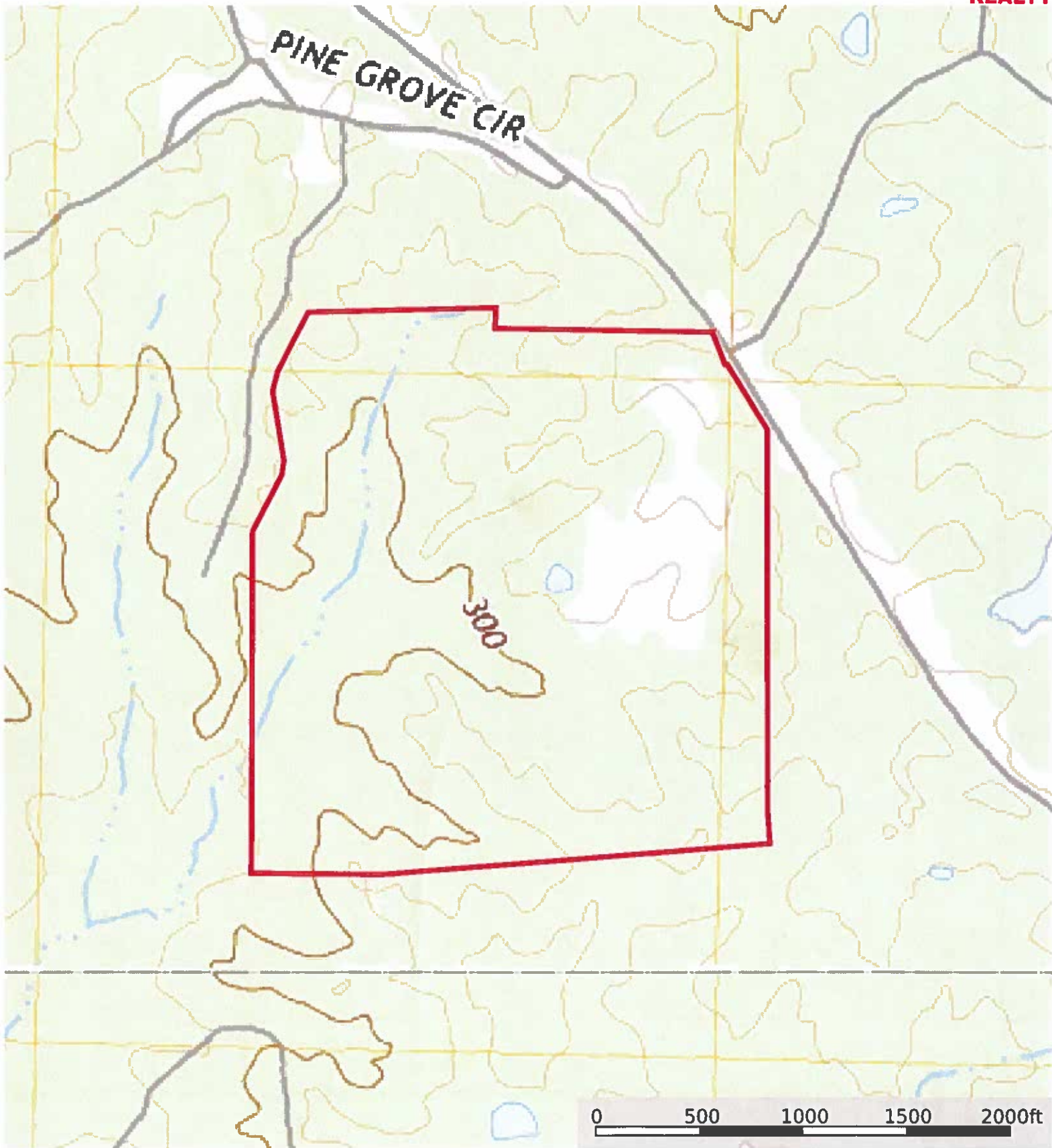


Boundary



Lebanon Pine Grove Road / 149.61 Acres

Mississippi, 149.61 AC +/-



 Boundary

Doug Rushing Realty, Inc

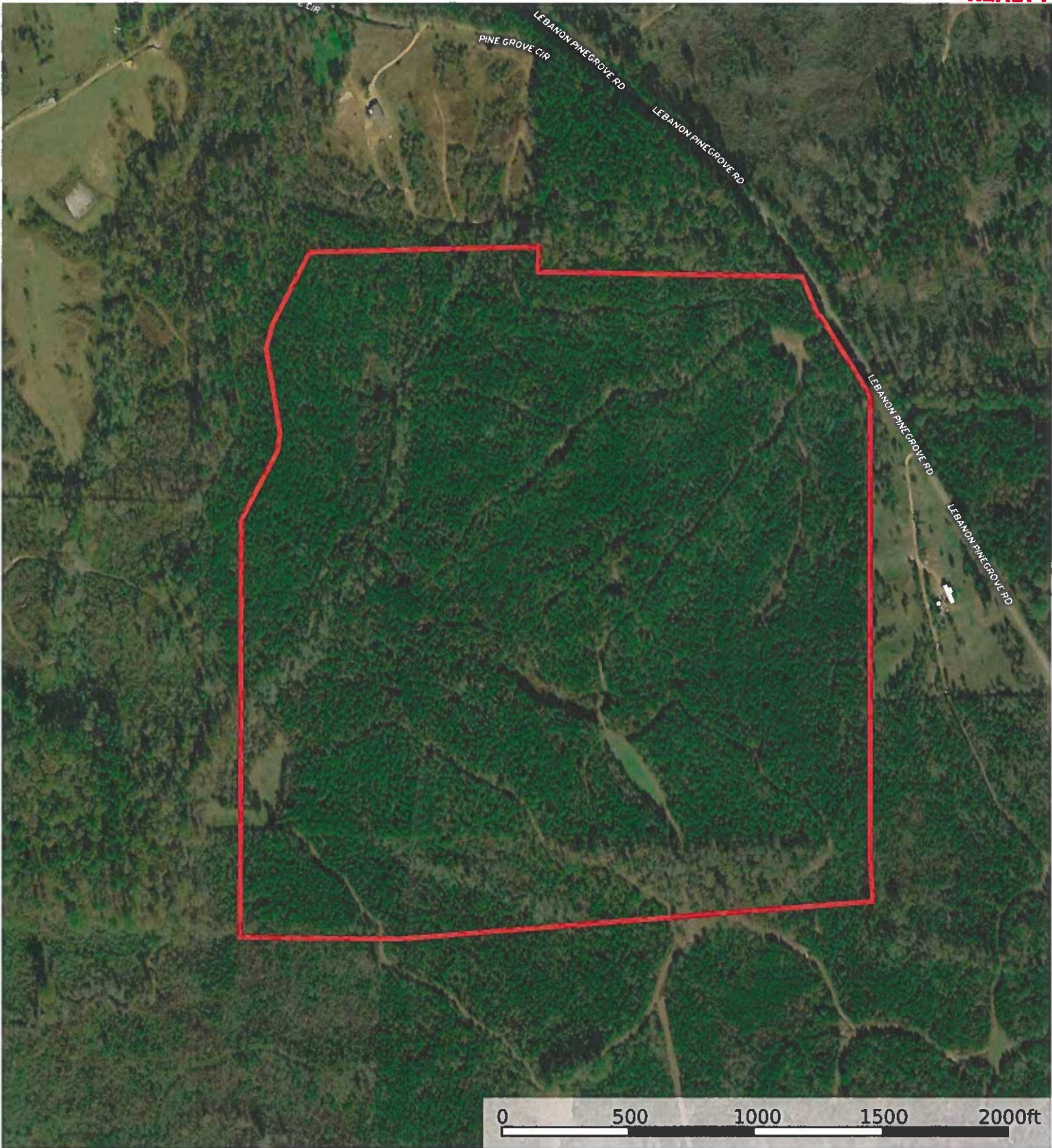
P: 601-876-3409

www.dougrushingrealty.com

301 Franklinton Street, Tylertown MS

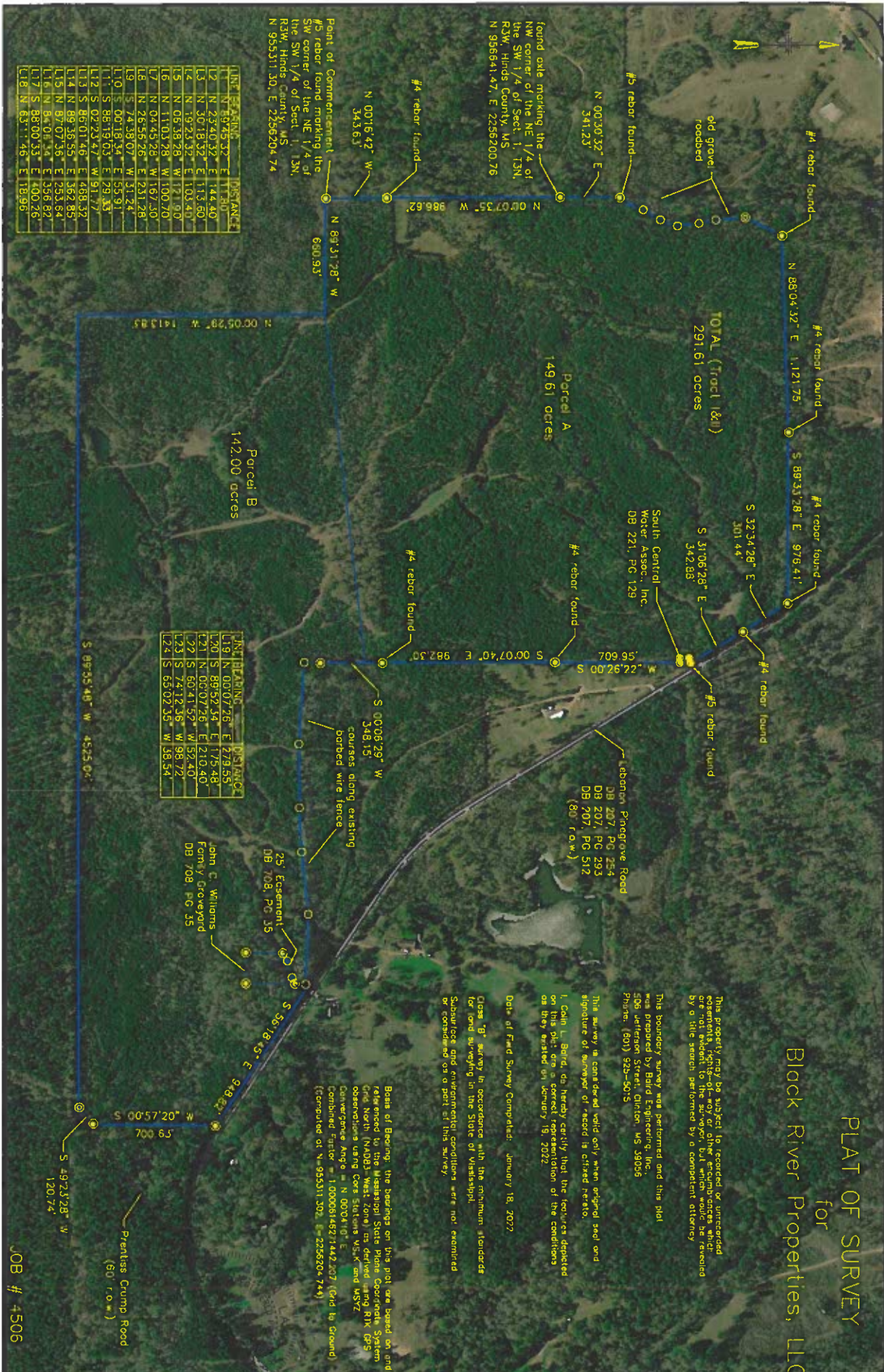


The information contained herein was obtained from sources deemed to be reliable. Land id™ Services makes no warranties or guarantees as to the completeness or accuracy thereof.



Boundary

PLAT OF SURVEY for Black River Properties, LLC



This plat may be subject to trespass by unpermitted occupants, fixtures or other encumbrances which are not evident to the surveyor, but which would be revealed by a title search performed by a competent attorney.

This boundary survey was performed and this plat was prepared by Blair Engineering, Inc., 508 Jefferson Street, Clinton, MS 38705, Phone: (501) 923-5055.

This survey is considered void only when original steel and signature of surveyor or record is clipped here to.

I, Colin L. Baird, do hereby certify that the figures depicted on this plat are a correct representation of the conditions as they existed on January 18, 2012.

Date of Field Survey Completed: January 18, 2012

Class "B" survey in accordance with the minimum standards for land surveying in the State of Mississippi.

Situations and environmental conditions were not examined or considered as a part of this survey.

Beats of Bearing: the bearings on this plat are based on grid referred to the Mississippi State Plane Coordinate System Grid North (NAD83 West Zone) as derived using RTK GPS observations using CORS Stations MS-K and MS-VZ. Convergence Angle = N 00°04'10" E. Combined Factor = 1.000081482171442207 (Grid to Ground) [Computed at N 95°31'30", E 22°56'20" 74]

LINE	BEARING	DISTANCE
L1	N 07°25'32" E	11.50
L2	N 23°40'32" E	144.40
L3	N 36°18'32" E	113.60
L4	N 16°21'32" E	103.40
L5	N 06°38'26" W	117.90
L6	N 11°03'26" W	100.70
L7	N 01°44'26" W	167.50
L8	N 26°52'26" E	231.28
L9	N 26°38'26" E	231.28
L10	S 06°38'07" N	31.64
L11	S 06°19'03" E	53.91
L12	S 06°23'47" W	91.17
L13	S 06°01'46" E	486.32
L14	N 89°26'55" E	362.85
L15	N 87°07'36" E	253.84
L16	N 84°04'4" E	356.82
L17	S 88°00'53" E	400.25
L18	N 85°11'46" E	118.95

LINE	BEARING	DISTANCE
L19	N 00°07'26" E	279.55
L20	S 89°52'14" E	175.48
L21	N 00°07'28" E	210.40
L22	S 60°41'52" W	52.40
L23	S 74°12'16" W	98.72
L24	S 65°02'35" W	58.54

JOB # 4506