

Residential Homesite

7.4 +/- Acres in Montgomery County, MS



\$44,900

Are you looking for home site with great highway access? Look no further than this 7.4 +/- acres in Montgomery County, MS. All utilities are ready to be hooked up and this tract offers over a 100 feet of road frontage on Greensboro Street in Winona. There are some mature hardwoods on top of a ridge, making a beautiful place to build a home. This tract is also only 300 feet from Highway 82, giving you quick access to Winona, Europa, Mathiston, and Starkville. To schedule a private showing, call or text Walker!

Directions from Winona, MS: Leaving Winona, head north on US-51 North / North Applegate Street toward Jefferson Street. Then in .5 miles take the ramp on the right for US-82 East / Highway 82 and head toward Starkville. Then in 1.4 miles turn right onto Greensboro Street. The property will be on your right in .1 miles.



Call me today!

WALKER TRANUM, REALTOR®
Walker@TomSmithHomes.com
662.268.6333 **office** | 662.769.1442 **cell**



TomSmithLandandHomes.com

Information is believed to be accurate but not guaranteed.



Call me today!

WALKER TRANUM, REALTOR®
Walker@TomSmithHomes.com
662.268.6333 **office** | 662.769.1442 **cell**



TomSmithLandandHomes.com

Information is believed to be accurate but not guaranteed.





Call me today!

WALKER TRANUM, REALTOR®
 Walker@TomSmithHomes.com
 662.268.6333 office | 662.769.1442 cell



TomSmithLandandHomes.com

Information is believed to be accurate but not guaranteed.

Aerial Map



[Click Here for Interactive Link](#)



Call me today!

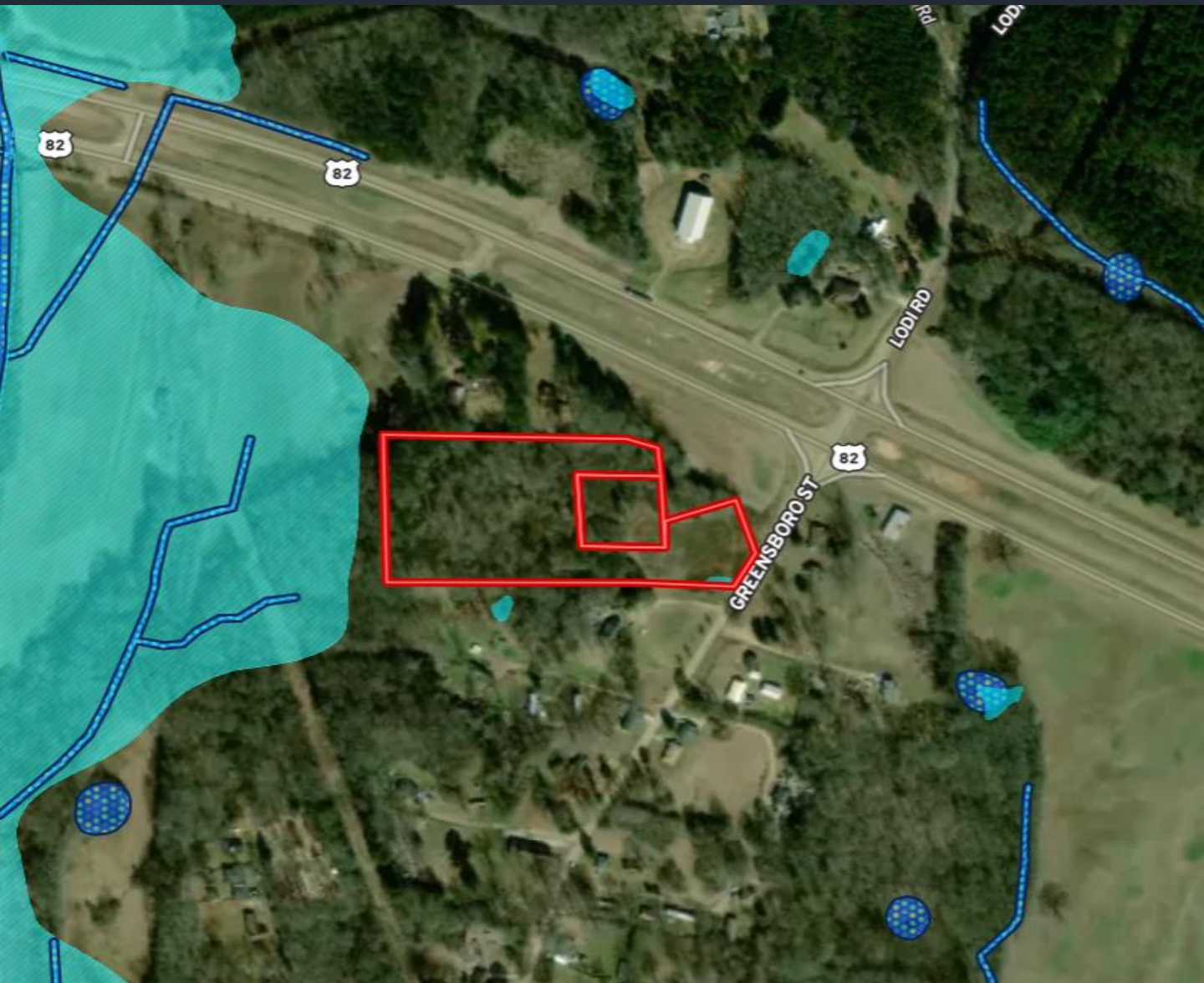
WALKER TRANUM, REALTOR®
Walker@TomSmithHomes.com
662.268.6333 **office** | 662.769.1442 **cell**



TomSmithLandandHomes.com

Information is believed to be accurate but not guaranteed.

Flood Map



Call me today!

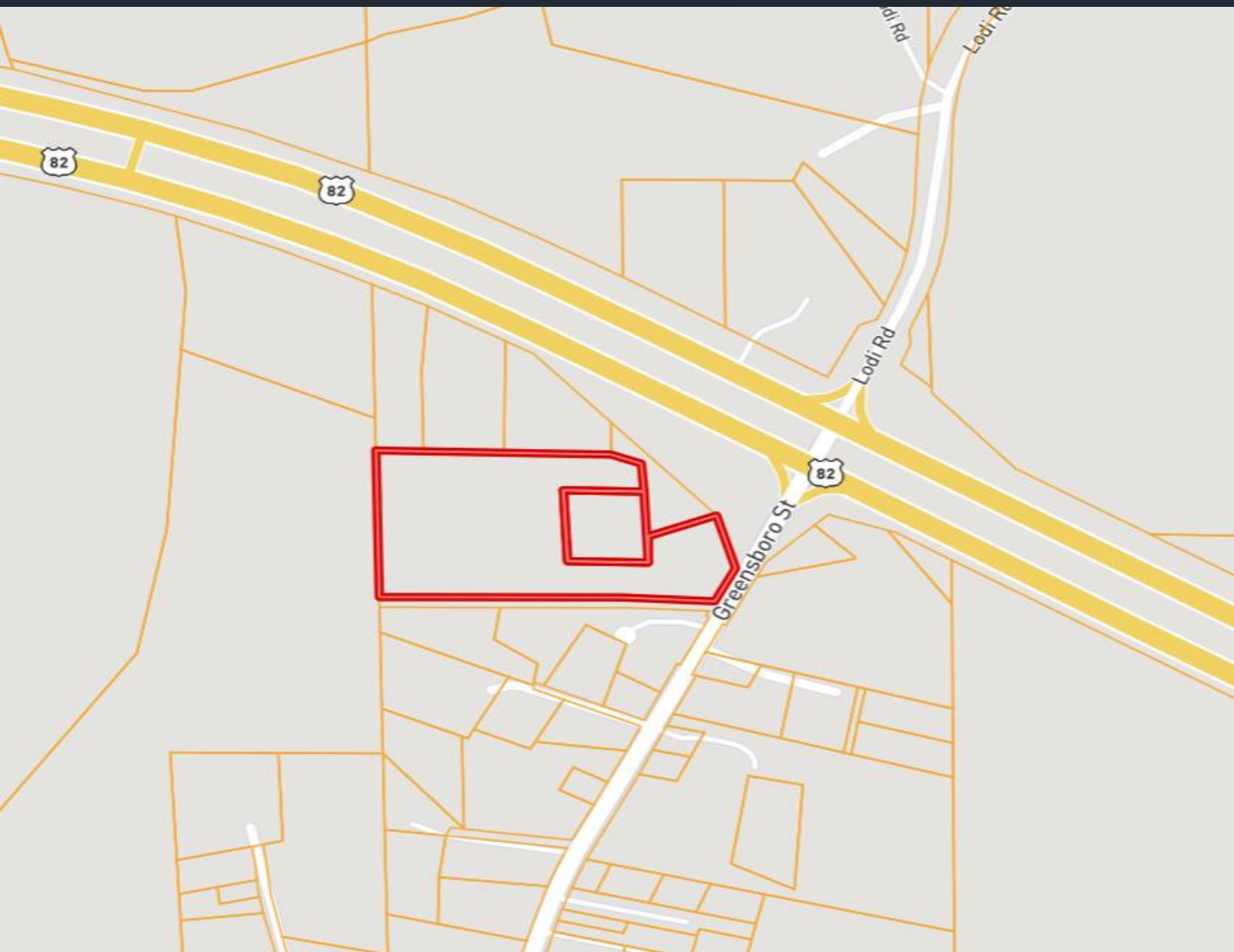
WALKER TRANUM, REALTOR*
Walker@TomSmithHomes.com
662.268.6333 office | 662.769.1442 cell



TomSmithLandandHomes.com

Information is believed to be accurate but not guaranteed.

Ownership Map



Call me today!

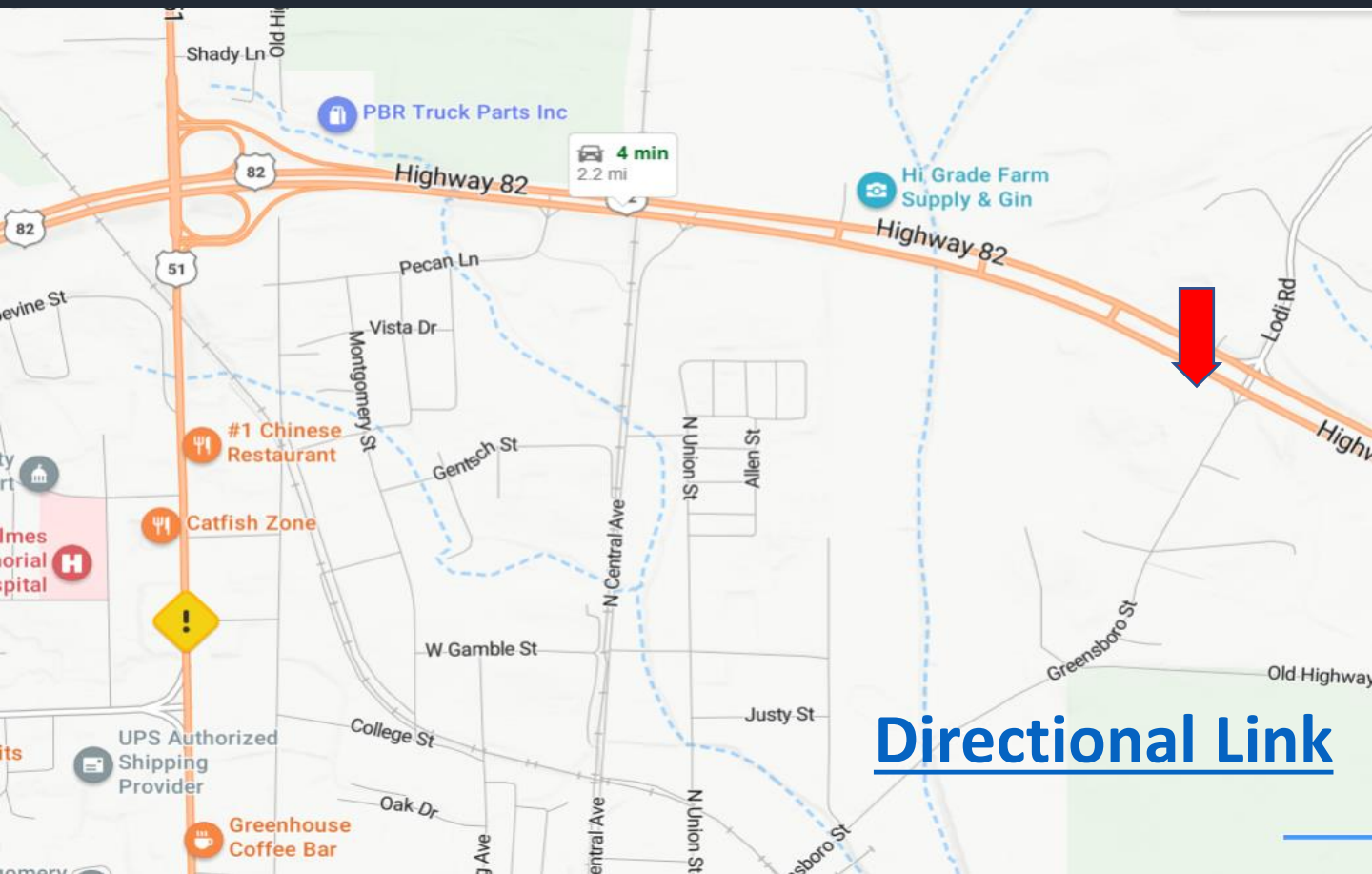
WALKER TRANUM, REALTOR®
Walker@TomSmithHomes.com
662.268.6333 **office** | 662.769.1442 **cell**



TomSmithLandandHomes.com

Information is believed to be accurate but not guaranteed.

Directional Map



[Directional Link](#)

Directions from Winona, MS: Leaving Winona, head north on US-51 North / North Applegate Street toward Jefferson Street. Then in .5 miles take the ramp on the right for US-82 East / Highway 82 and head toward Starkville. Then in 1.4 miles turn right onto Greensboro Street. The property will be on your right in .1 miles.



Call me today!

WALKER TRANUM, REALTOR®
Walker@TomSmithHomes.com
662.268.6333 **office** | 662.769.1442 **cell**



TomSmithLandandHomes.com

Information is believed to be accurate but not guaranteed.