



# WARREN COUNTY COMMERCIAL PROPERTY



**\$220,000**

**1713 Clay Street Vicksburg, MS 39183**

Introducing a rare opportunity to own a commercial building in the bustling city of Vicksburg, MS! This Warren County income-producing property is conveniently located on the highly trafficked Clay St, making it an ideal location for businesses of all types. With 5,513 square feet of space, this building offers ample room for your business to grow and thrive. Three of the five units are currently occupied by tenants, providing a steady source of income for the new owner from day one. The building also has plenty of parking, ensuring customers and employees can access the property easily. Whether you're looking to start a new business or expand an existing one, this commercial building is the perfect opportunity to invest in your future. Don't miss your chance to own this prime piece of real estate in Vicksburg, MS. Call Clay today to schedule a viewing and take the first step towards securing your future success.

**Directions from Vicksburg National Military Park:** Turn right onto Clay Street heading west towards downtown Vicksburg. After 1.2 miles, the building will be on the right.



*Call me today!*

**CLAY SIMMONS, REALTOR®**  
Clay@TomSmithHomes.com  
601.898.2772 **office** | 601.672.6864 **cell**



**TomSmithLandandHomes.com**

Information is believed to be accurate but not guaranteed.





*Call me today!*

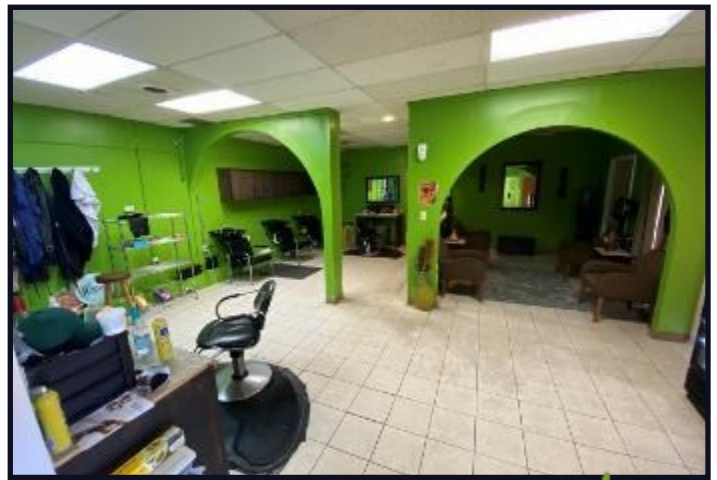
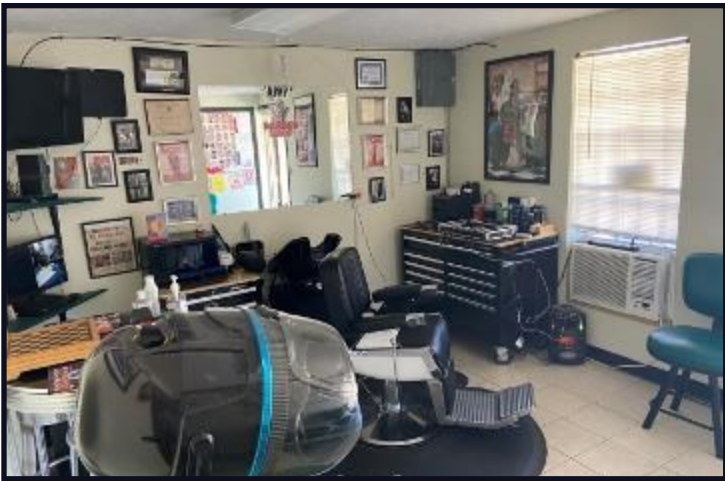
**CLAY SIMMONS, REALTOR®**  
 Clay@TomSmithHomes.com  
 601.898.2772 office | 601.672.6864 cell



**TomSmithLandandHomes.com**

Information is believed to be accurate but not guaranteed.





*Call me today!*

**CLAY SIMMONS, REALTOR®**  
 Clay@TomSmithHomes.com  
 601.898.2772 office | 601.672.6864 cell



**TomSmithLandandHomes.com**

Information is believed to be accurate but not guaranteed.



## Aerial Map



## ownership Map

INTERACTIVE MAP

[CLICK HERE](#)



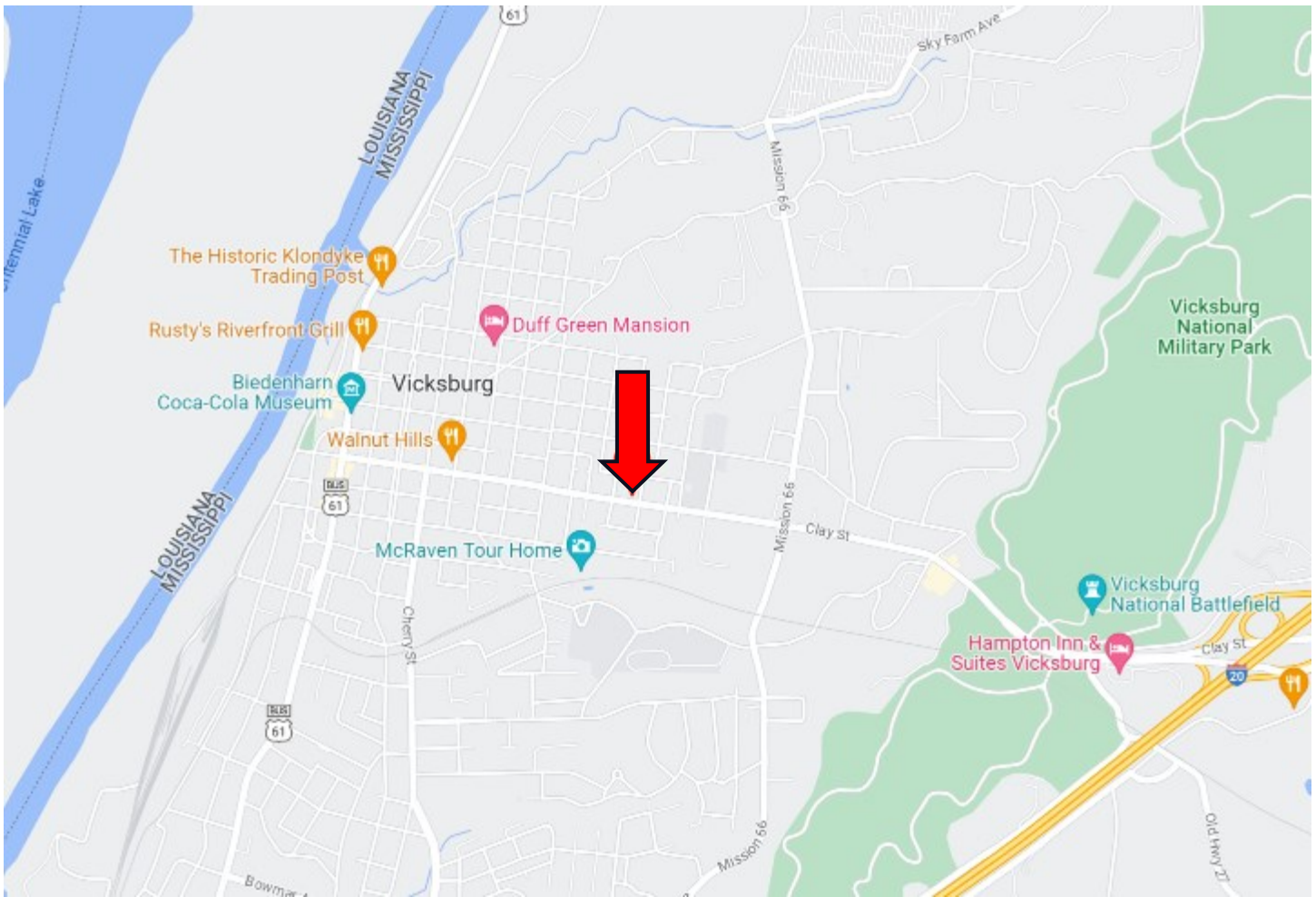
*Call me today!*

**CLAY SIMMONS**, REALTOR®  
Clay@TomSmithHomes.com  
601.898.2772 **office** | 601.672.6864 **cell**



**TomSmithLandandHomes.com**

Information is believed to be accurate but not guaranteed.



## Directional Map

**1713 Clay Street, Vicksburg, MS 39183**

**Directions from Vicksburg National Military Park:** Turn Right onto Clay Street heading West towards downtown Vicksburg. After 1.2 miles, the building will be on the right.



*Call me today!*

**CLAY SIMMONS, REALTOR®**  
 Clay@TomSmithHomes.com  
 601.898.2772 **office** | 601.672.6864 **cell**



**TomSmithLandandHomes.com**

Information is believed to be accurate but not guaranteed.