

# 12+/- Acre Jasper County Camp Surrounded by Tallahala WMA



Welcome to your new hunting camp in Jasper County, MS! With this 12+/- acre property located within Tallahala WMA, you can access thousands of acres of public hunting land, making this ideal for hunters. There is an abundance of wildlife throughout the property, including deer, turkey, wild hogs, and even a small pond to do some fishing containing bass, bream, and catfish. The owners have enjoyed this camp for over 22 years and have successfully hunted every year they've owned it. Three food plots are already set up, and ready to go on the 12+/- acres. The camp house is approximately 700 square feet and features two bedrooms, one-and-a-half baths, and a full kitchen. This camp is completely off-grid with generator power (generator not included, but could be negotiated). They currently catch rainwater for septic and washing and bring water for cooking and drinking. There are also two barns. One barn is approximately 20ftx20ft, and the other is approximately 30ftx34ft. This hunting camp is one you want to take advantage of! Call Clay Simmons today to schedule your private viewing!

[Google Map Link](#)



**CLAY  
SIMMONS**  
REALTOR®

Office: 601.898.2772  
Cell: 601.672.6864

[Clay@TomSmithHomes.com](mailto:Clay@TomSmithHomes.com)



## A Real Estate Expert You Can Trust

[TomSmithLandandHomes.com](http://TomSmithLandandHomes.com)

Information is believed to be accurate but not guaranteed.







**CLAY SIMMONS**  
REALTOR®  
Office: 601.898.2772  
Cell: 601.672.6864  
[Clay@TomSmithHomes.com](mailto:Clay@TomSmithHomes.com)



**A Real Estate Expert You Can Trust**  
[TomSmithLandandHomes.com](http://TomSmithLandandHomes.com)

Information is believed to be accurate but not guaranteed.







**CLAY SIMMONS**

REALTOR®

Office: 601.898.2772

Cell: 601.672.6864

Clay@TomSmithHomes.com



Expect More. Get More.

**A Real Estate Expert You Can Trust**

TomSmithLandandHomes.com

Information is believed to be accurate but not guaranteed.







**CLAY SIMMONS**

REALTOR®

Office: 601.898.2772

Cell: 601.672.6864

Clay@TomSmithHomes.com



Expect More. Get More.

**A Real Estate Expert You Can Trust**

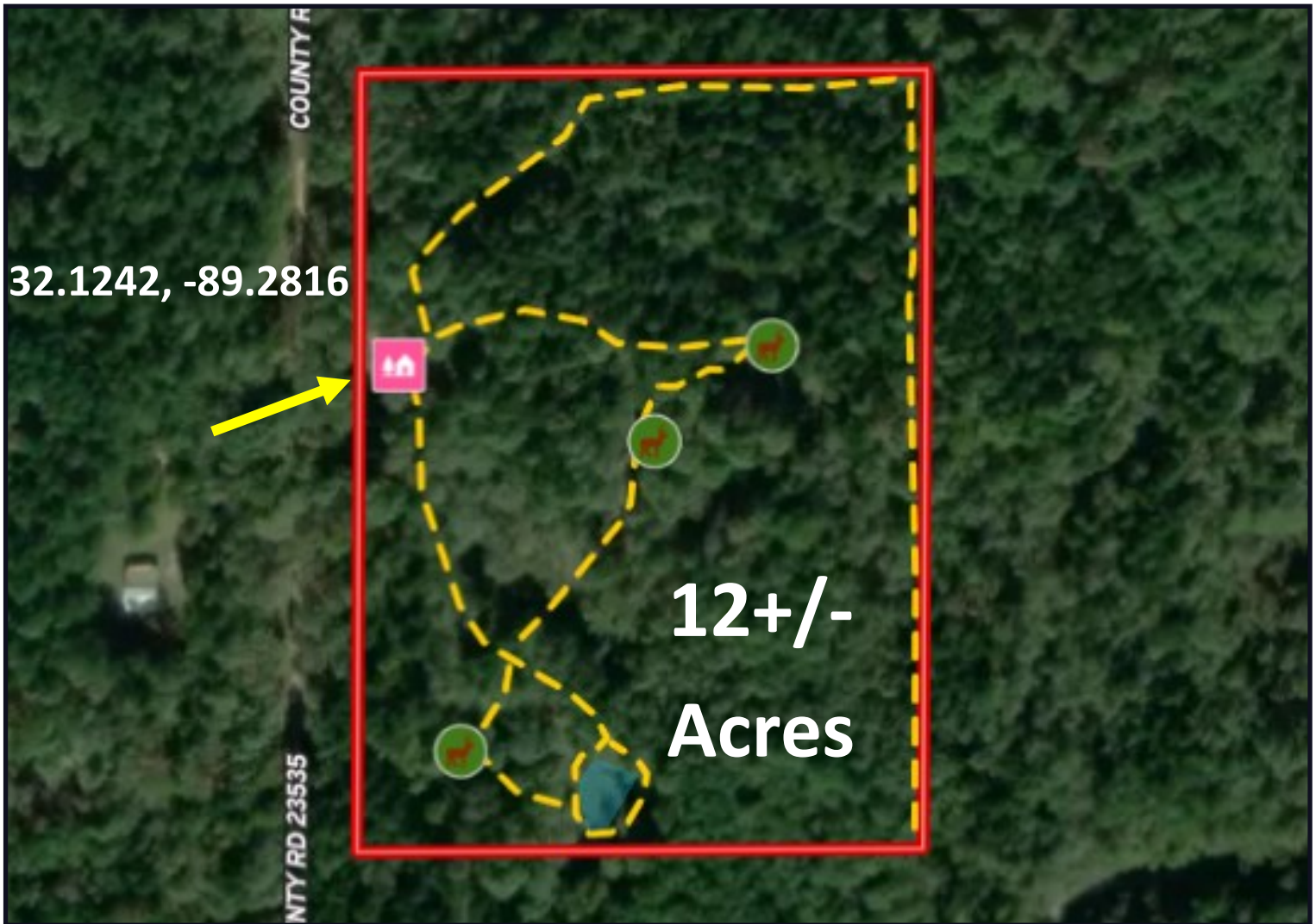
TomSmithLandandHomes.com

Information is believed to be accurate but not guaranteed.





# AERIAL MAP



[CLICK HERE FOR AN INTERACTIVE MAP](#)



CLAY  
**SIMMONS**  
REALTOR®

Office: 601.898.2772  
Cell: 601.672.6864  
Clay@TomSmithHomes.com



**A Real Estate Expert You Can Trust**

TomSmithLandandHomes.com

Information is believed to be accurate but not guaranteed.



# OWNERSHIP MAP



**CLAY SIMMONS**  
REALTOR®

Office: 601.898.2772

Cell: 601.672.6864

[Clay@TomSmithHomes.com](mailto:Clay@TomSmithHomes.com)



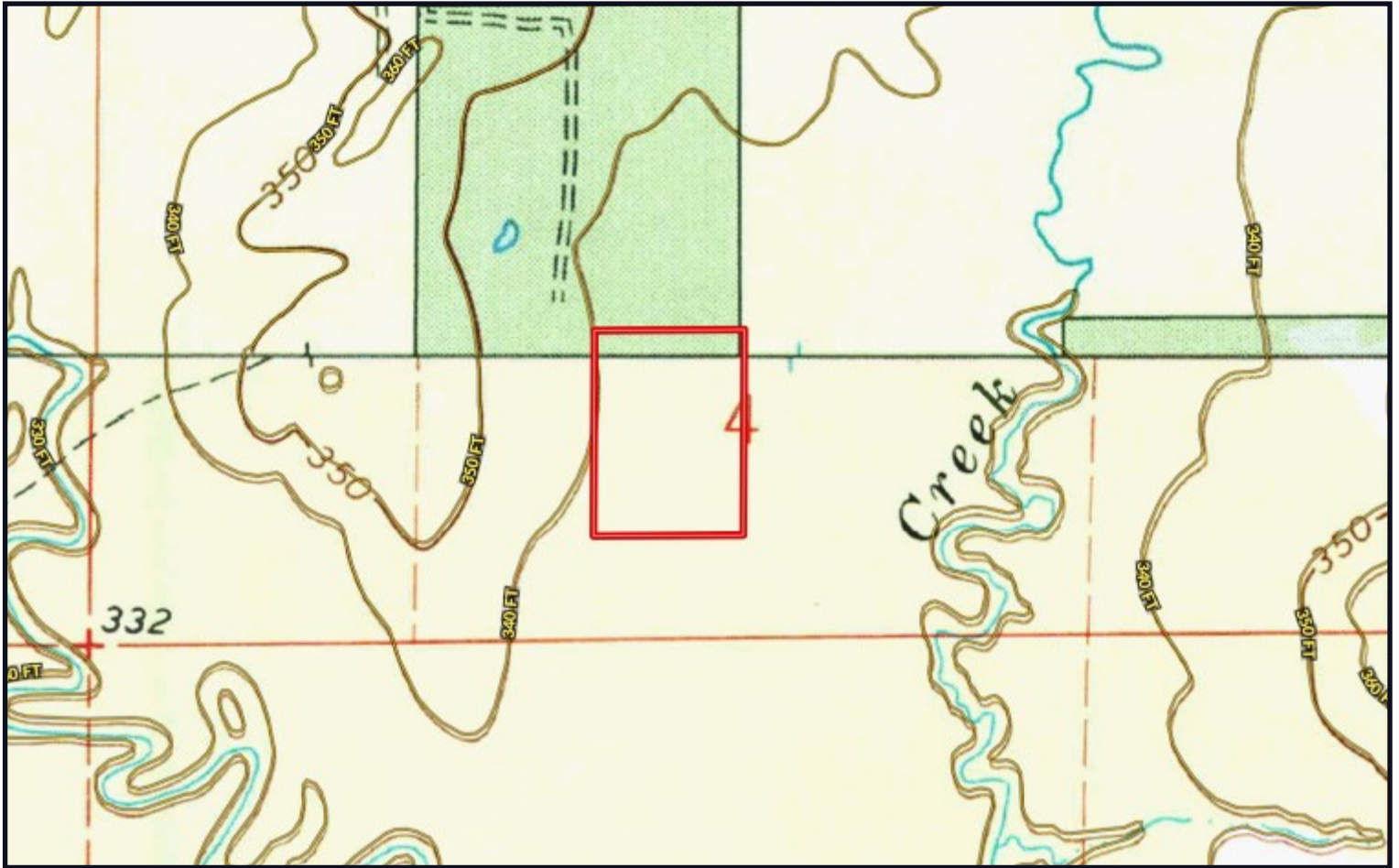
**A Real Estate Expert You Can Trust**

[TomSmithLandandHomes.com](http://TomSmithLandandHomes.com)

Information is believed to be accurate but not guaranteed.



# TOPO MAP



**CLAY SIMMONS**

REALTOR®

Office: 601.898.2772

Cell: 601.672.6864

[Clay@TomSmithHomes.com](mailto:Clay@TomSmithHomes.com)



Expect More. Get More.

**A Real Estate Expert You Can Trust**

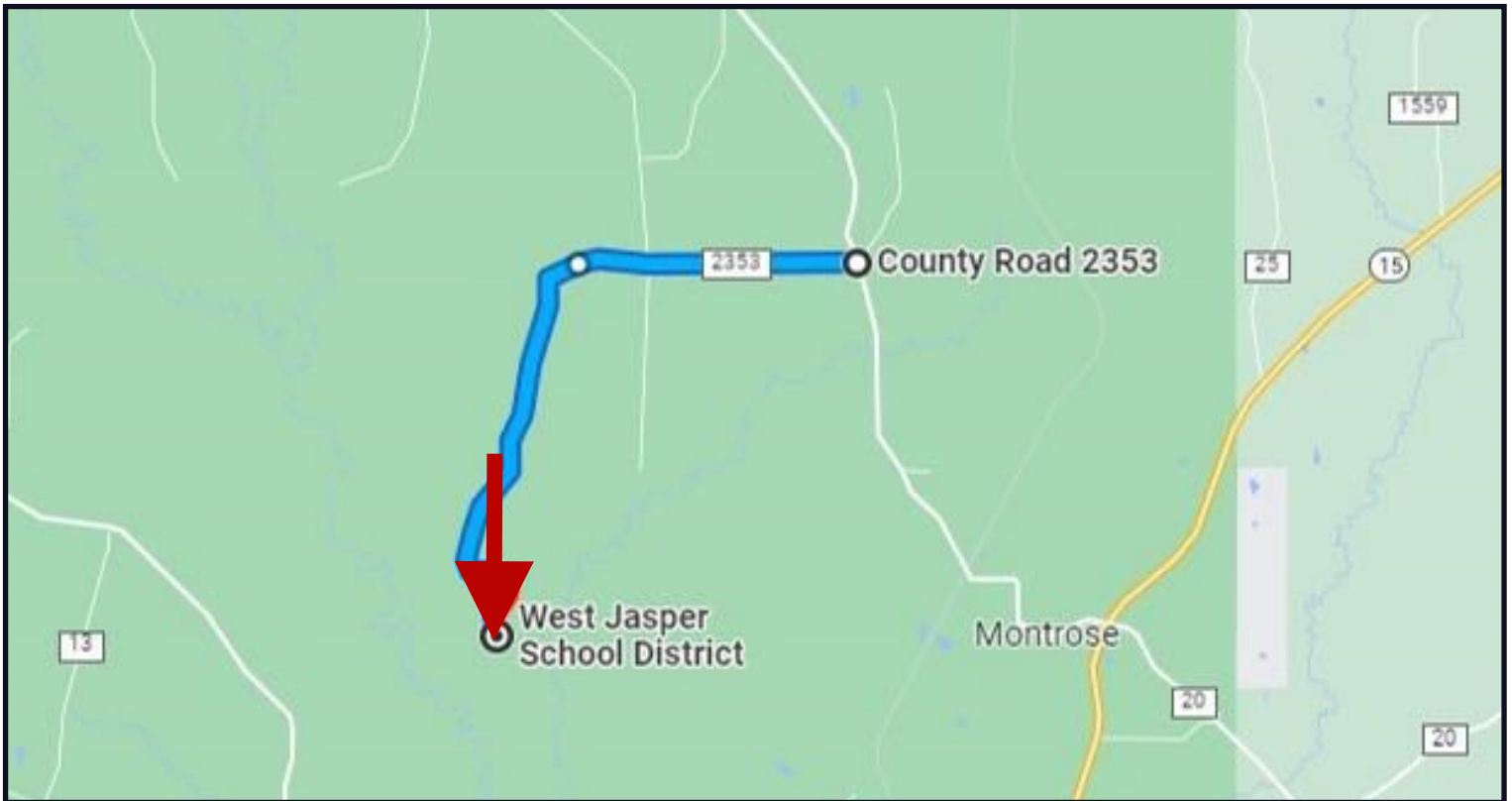
[TomSmithLandandHomes.com](http://TomSmithLandandHomes.com)

Information is believed to be accurate but not guaranteed.





# DIRECTIONAL MAP



Directions from Intersection of County Rd 23 and County Rd 2353 in Montrose, MS: Head west on Co Rd 2353 toward County Rd 23531 for 1.4 miles then continue onto County Rd 23535. After 2.1 miles the property will be on your left.

[Google Map Link](#)



**CLAY  
SIMMONS**  
REALTOR®

Office: 601.898.2772  
Cell: 601.672.6864  
[Clay@TomSmithHomes.com](mailto:Clay@TomSmithHomes.com)



**A Real Estate Expert You Can Trust**

[TomSmithLandandHomes.com](http://TomSmithLandandHomes.com)

Information is believed to be accurate but not guaranteed.

