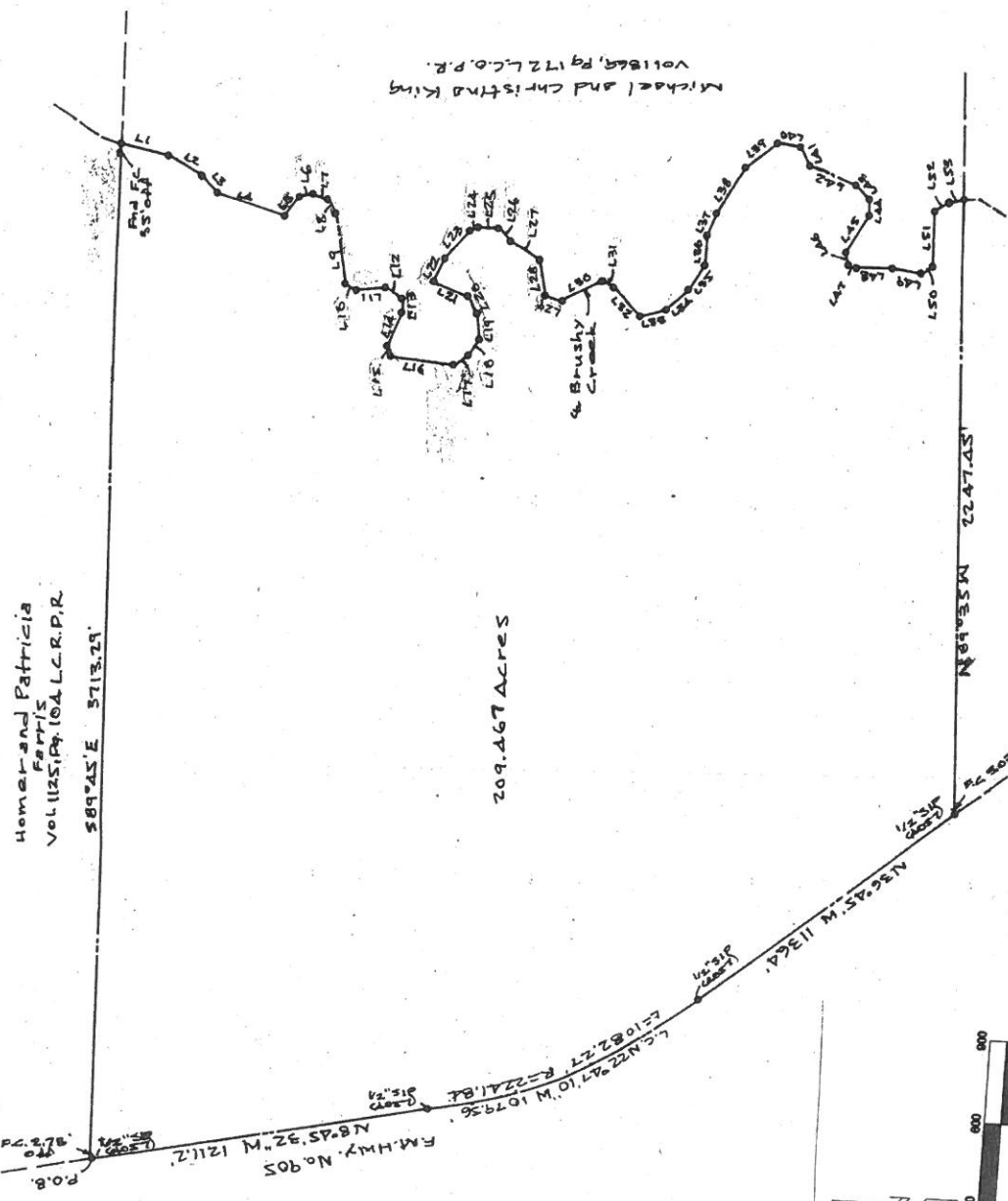


Homer and Patricia
 Farris
 Vol. 11251 Pg. 104 L.C.R.P.R.
 589°45' E 3713.29'



209.467 ACRES

Benoit and Ansembourg
 Coffinet
 Vol. 631, Pg. 196 L.C.D.R.



Scale: 1" = 300'
 Job No. 1246022
 P.O.B. - Point of Beginning
 S.I.P. - Found Iron Pin
 stamped R.B. Chaney
 Chaney Engineering, Inc.
 603-764-6383
 Firm No. 10163700



B-4-22

L1	S145°21'41"W	177.34'
L2	S30°21'06"W	132.30'
L3	S46°42'22"W	85.31'
L4	S18°33'55"W	235.74'
L5	S53°14'14"E	87.07'
L6	S8°51'E	34.59'
L7	S18°41'09"W	55.10'
L8	S58°41'08"W	260.45'
L9	S79°45'15"W	56.79'
L10	S24°42'33"W	41.85'
L11	S5°40'23"E	108.48'
L12	S35°06'45"W	63.95'
L13	S89°17'13"W	38.81'
L14	N69°52'11"W	135.74'
L15	S69°54'11"W	27.68'
L16	S8°03'04"W	236.61'
L17	S8°38'54"E	62.90'
L18	S59°46'40"E	67.37'
L19	N66°03'53"E	92.97'
L20	N61°56'E	76.54'
L21	N24°08'E	130.07'
L22	S68°53'06"E	88.78'
L23	S44°37'52"E	118.39'
L24	S37°09'50"E	39.16'
L25	S2°34'44"E	74.27'
L26	S41°25'54"W	75.38'
L27	S11°47'06"W	115.88'
L28	S84°56'50"W	123.12'
L29	S16°01'40"W	82.95'
L30	S27°56'30"E	147.29'
L31	S21°56'11"W	55.05'
L32	S46°13'43"W	140.85'
L33	S13°43'56"E	105.94'
L34	S42°44'15"E	95.84'
L35	S57°57'E	101.96'
L36	S84°02'30"E	116.55'
L37	S69°29'53"E	83.53'
L38	S58°53'53"E	192.75'
L39	S37°18'30"E	149.22'
L40	S10°50'45"W	70.79'
L41	S45°57'12"W	79.01'
L42	S22°53'37"W	183.16'
L43	S46°04"W	71.87'
L44	S81°10'50"W	57.09'
L45	N59°21'09"W	164.72'
L46	S73°46'20"W	43.60'
L47	S41°52'20"W	23.82'
L48	S22°23'07"E	147.99'
L49	S10°09'24"W	95.88'
L50	S20°57'30"E	47.58'
L51	S89°16'11"E	208.75'
L52	S33°27'16"E	57.17'
L53	S10°45'15"E	54.97'