

# Recreational Hunting Tract

## 47+/- Acres Choctaw County, MS



**This 47+/- acre tract is located approximately 5 miles north of Ackerman, MS, on Macedonia Road. The timber is a mixture of pine and hardwood. The topography is rolling, with several springs flowing through the property. From the initial inspection, there appears to be abundant game, large and small. This property would make an excellent recreational timber tract. Give Michael a call to schedule your private showing!**

**Directions from the intersection of Macedonia Road and Hwy 15 north of Ackerman, MS: Travel east .3 miles on Macedonia Road. The entrance to the property will be on the north side of the road.**



**GOOGLE MAPS LINK**

*Call me today!*

**MICHAEL COOPER, REALTOR®**  
Mcooper@TomSmithLand.com  
662.268.6333 office | 662.285.8686 cell



**TomSmithLandandHomes.com**

Information is believed to be accurate but not guaranteed.





*Call me today!*

**MICHAEL COOPER, REALTOR®**  
Mcooper@TomSmithLand.com  
662.268.6333 office | 662.285.8686 cell



**TomSmithLandandHomes.com**

Information is believed to be accurate but not guaranteed.





*Call me today!*

**MICHAEL COOPER, REALTOR®**  
Mcooper@TomSmithLand.com  
662.268.6333 office | 662.285.8686 cell



**TomSmithLandandHomes.com**

Information is believed to be accurate but not guaranteed.





*Call me today!*

**MICHAEL COOPER, REALTOR®**  
Mcooper@TomSmithLand.com  
662.268.6333 office | 662.285.8686 cell

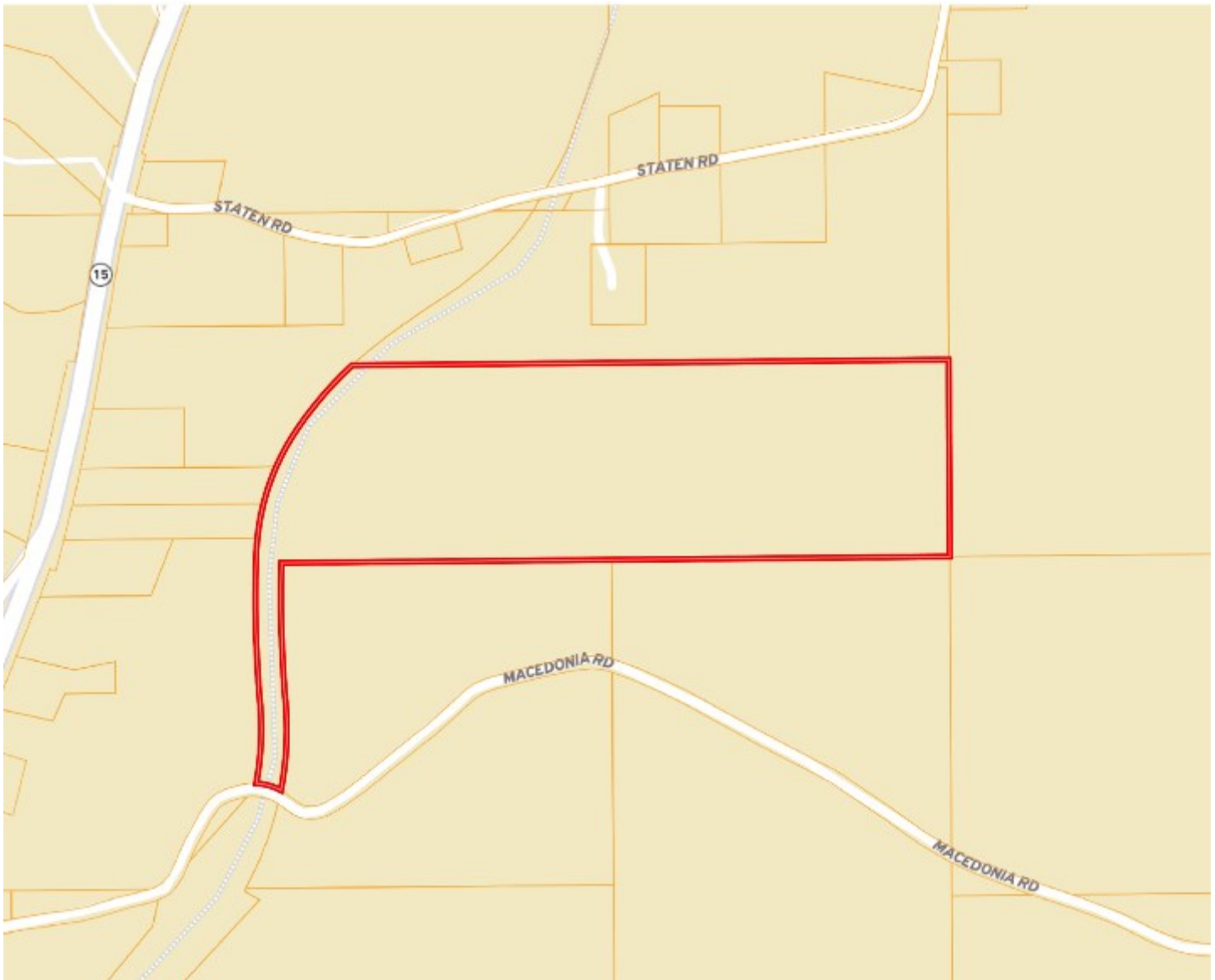


**TomSmithLandandHomes.com**

Information is believed to be accurate but not guaranteed.



# OWNERSHIP MAP



2011-2022  
BEST  
BROKERAGES

*Call me today!*

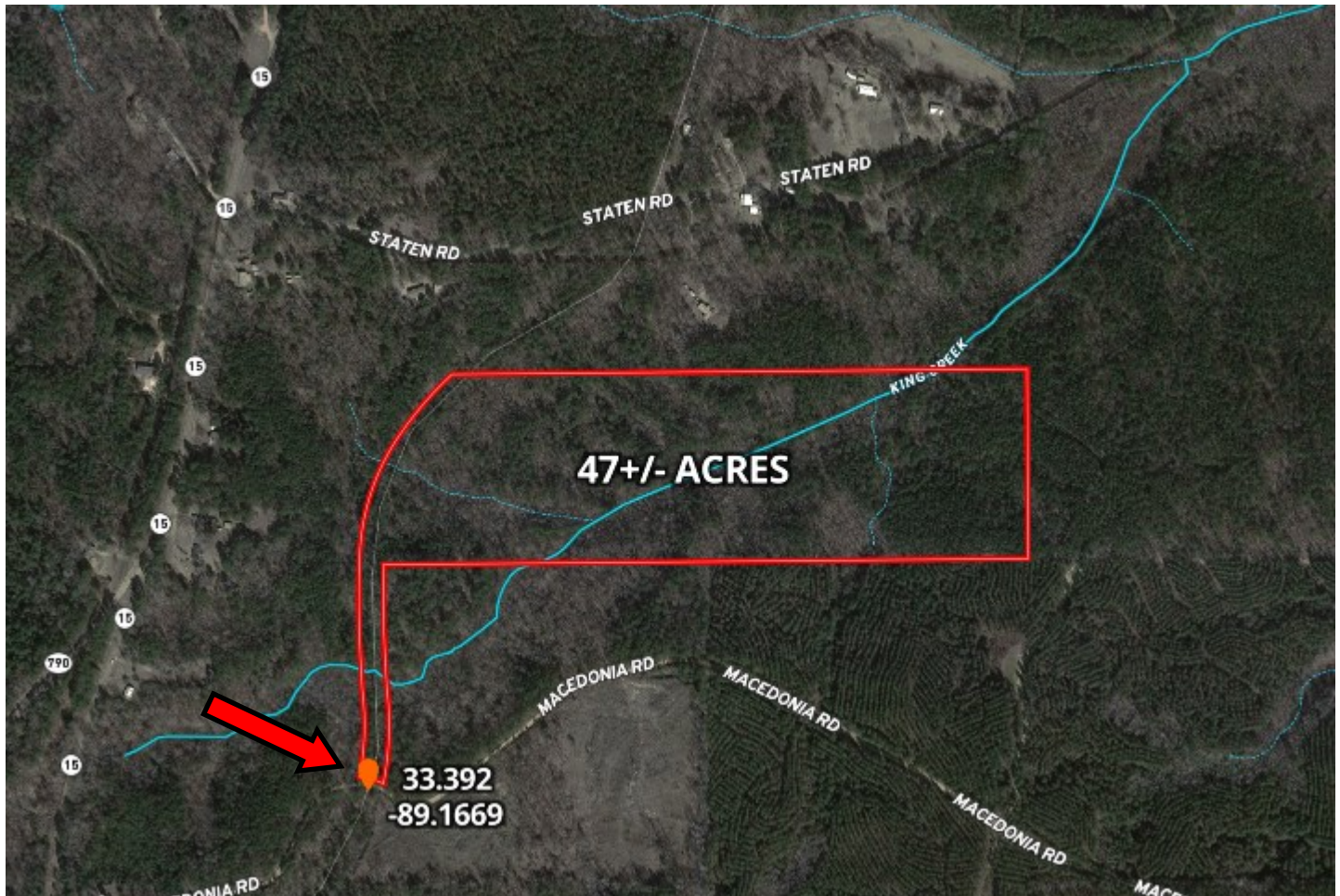
**MICHAEL COOPER, REALTOR®**  
Mcooper@TomSmithLand.com  
662.268.6333 office | 662.285.8686 cell



**TomSmithLandandHomes.com**

Information is believed to be accurate but not guaranteed.

# AERIAL MAP



# INTERACTIVE MAP



*Call me today!*

**MICHAEL COOPER, REALTOR®**  
Mcooper@TomSmithLand.com  
662.268.6333 office | 662.285.8686 cell

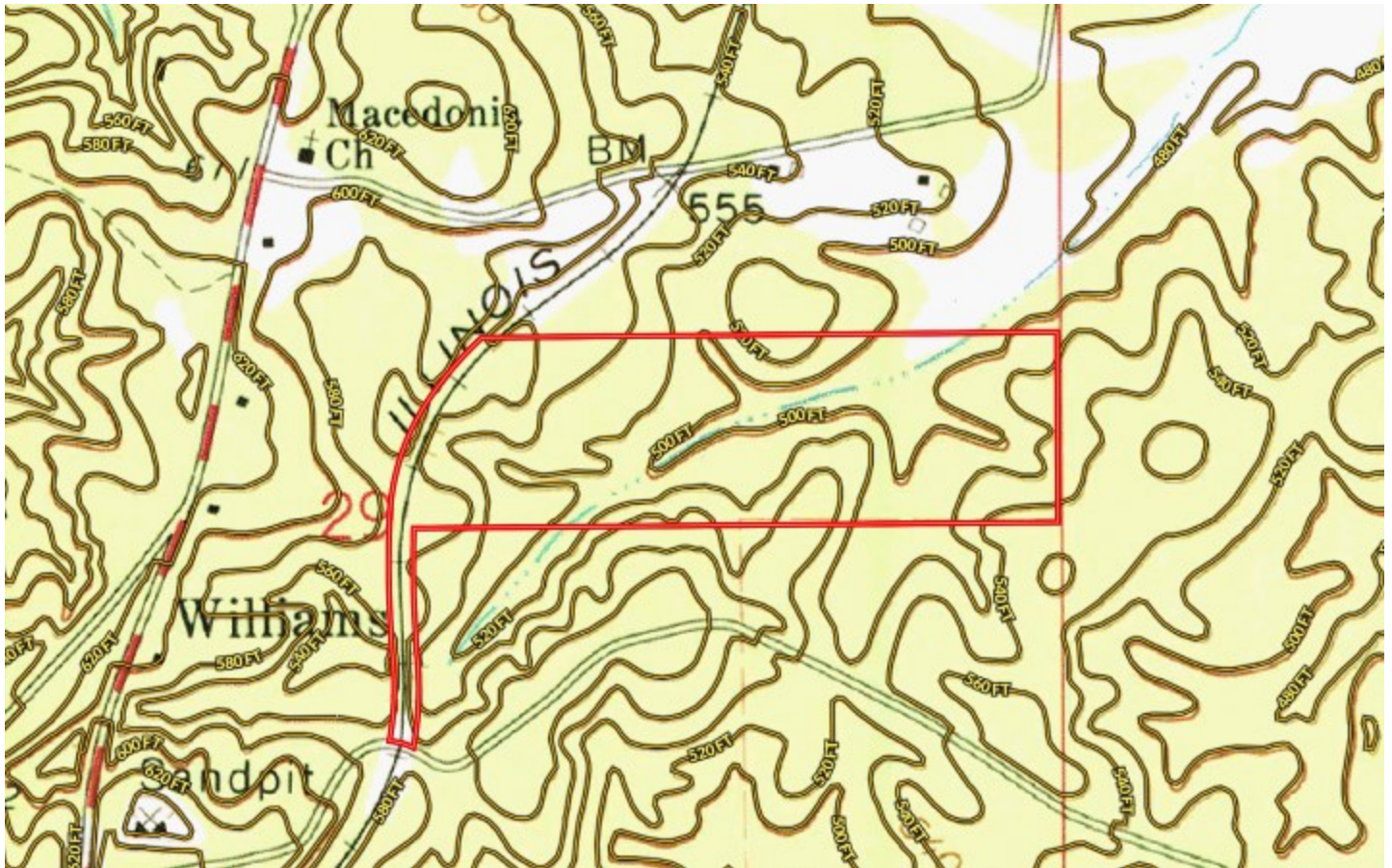


**TomSmithLandandHomes.com**

Information is believed to be accurate but not guaranteed.



# TOPO MAP



*Call me today!*

**MICHAEL COOPER, REALTOR®**  
Mcooper@TomSmithLand.com  
662.268.6333 office | 662.285.8686 cell

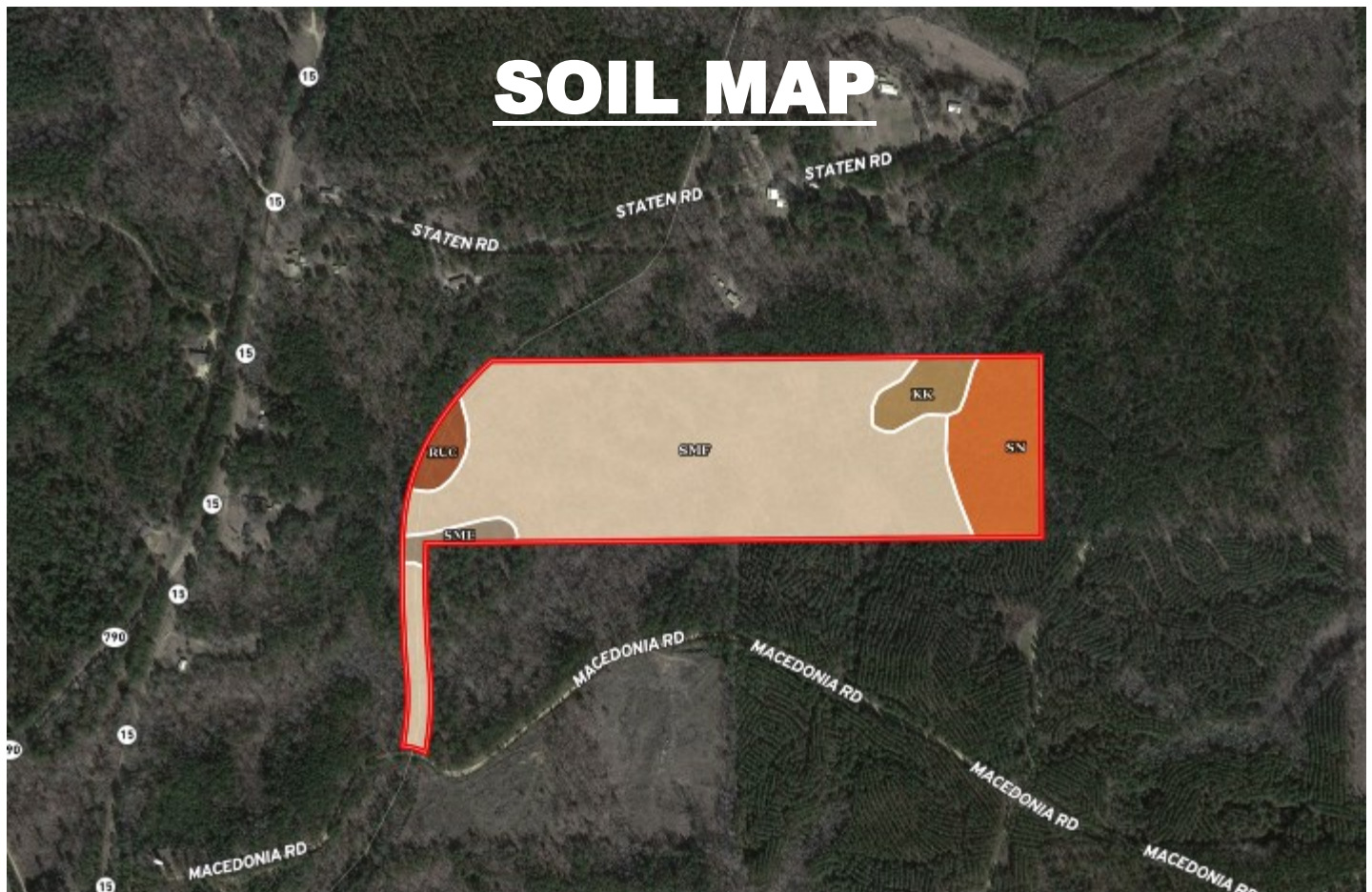


**TomSmithLandandHomes.com**

Information is believed to be accurate but not guaranteed.



# SOIL MAP



SOIL CODE	SOIL DESCRIPTION	ACRES	%	CPI	NCCPI	CAP
SmF	Smithdale fine sandy loam, 15 to 35 percent slopes	37.25	78.06	0	11	7e
SN	Smithdale-Maben association, hilly	6.19	12.97	0	36	7e
Kk	Kirkville fine sandy loam, 0 to 2 percent slopes, occasionally flooded	2.07	4.34	0	76	2w
RuC	Ruston fine sandy loam, 5 to 8 percent slopes	1.26	2.64	0	74	3e
SmE	Smithdale fine sandy loam, 8 to 15 percent slopes	0.95	1.99	0	54	6e
TOTALS		47.72( )	100%	-	19.58	6.66



*Call me today!*

**MICHAEL COOPER, REALTOR®**  
Mcooper@TomSmithLand.com  
662.268.6333 office | 662.285.8686 cell

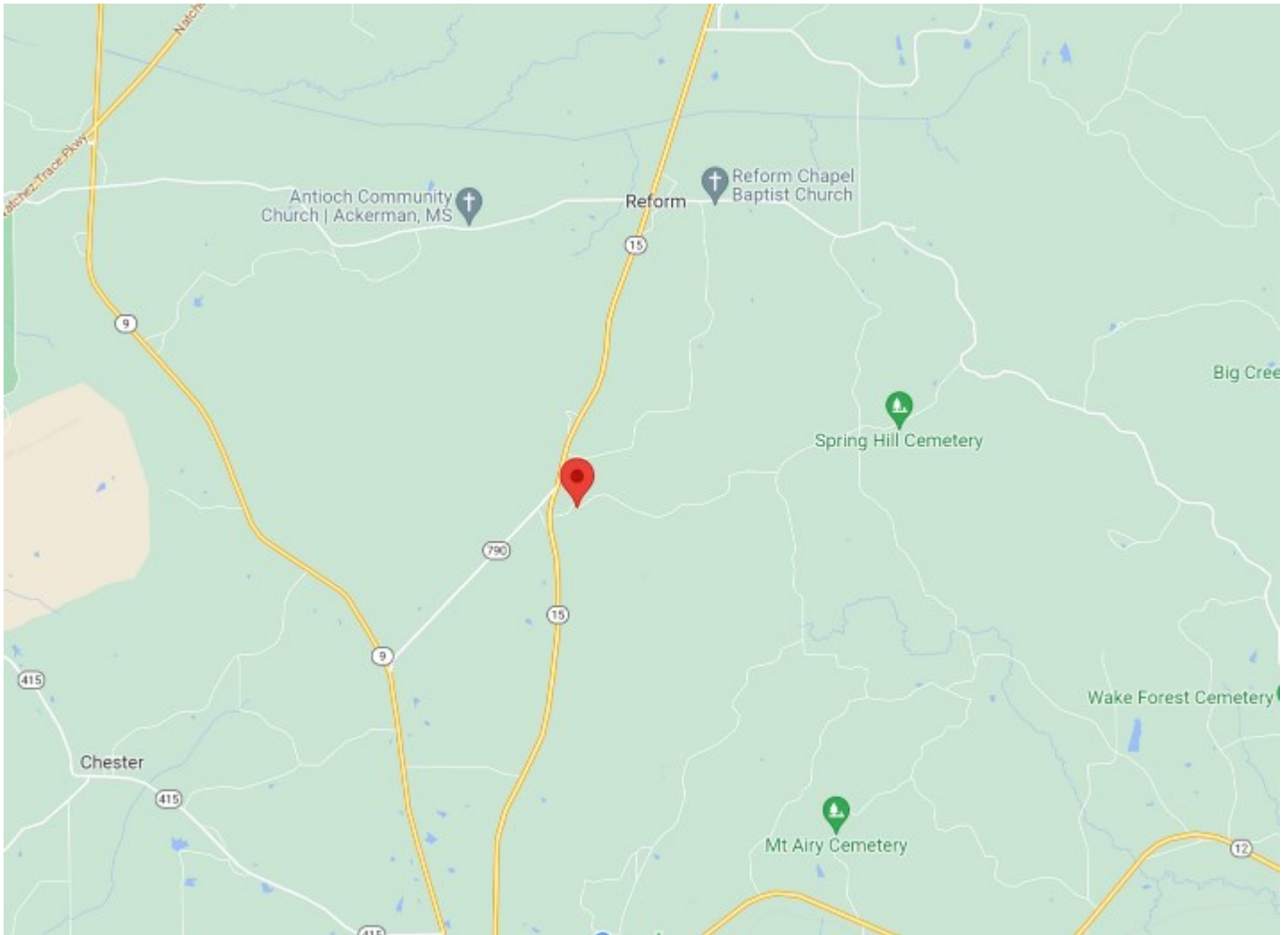


**TomSmithLandandHomes.com**

Information is believed to be accurate but not guaranteed.



# **DIRECTIONAL MAP**



**Directions from the intersection of Macedonia Road and Hwy 15 north of Ackerman, MS: Travel east .3 miles on Macedonia Road. The entrance to the property will be on the north side of the road.**

## **GOOGLE MAPS LINK**



*Call me today!*

**MICHAEL COOPER, REALTOR®**  
Mcooper@TomSmithLand.com  
662.268.6333 office | 662.285.8686 cell



**TomSmithLandandHomes.com**

Information is believed to be accurate but not guaranteed.