

## Spacious Home on 30± Acres Lawrence County, MS



**\$445,000**

This well-built home situated on 30+/- acres in Lawrence County, MS, is spacious and has so much to offer! The two-story home features four bedrooms and 3.5 bathrooms with a large eat-in kitchen, which is great for hosting guests or entertaining a large family during the holidays. The den is perfect for family time, game, or movie nights. There are two bedrooms downstairs and at least two upstairs. The large closets are great for storage. Outside, the large oaks throughout the front yard help create that peaceful country setting that is so desirable. Out back, multiple shops can be helpful for the handyman in many ways. If you are the outdoors type, the 30+/- acres allow you to create a hunter's paradise or use it for recreational purposes. As you enter the property, you will notice the nice concrete driveway, including a bridge that gives the property that initial wow factor. This home is one of those you have to see for yourself. Call Mike or Allyson to schedule your showing today!

**85 Jessie Wallace Road Jayess, MS 39641**



**MIKE ODOM**  
REALTOR®

O: 601.898.2772 | C: 601.927.5018  
MikeOdom@TomSmithLand.com



**ALLYSON MIZE**  
REALTOR®

O: 601.898.2772 | C: 662.607.1703  
Allyson@TomSmithLand.com

**TomSmithLandandHomes.com**

Information is believed to be accurate but not guaranteed.





**MIKE ODOM**  
REALTOR®

O: 601.898.2772 | C: 601.927.5018  
MikeOdom@TomSmithLand.com



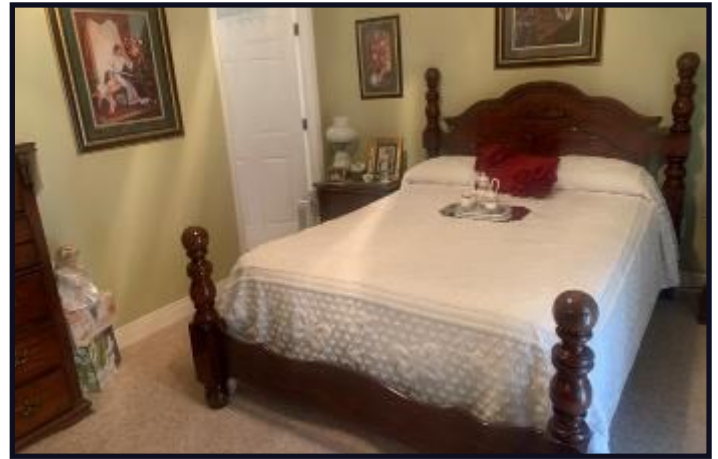
**ALLYSON MIZE**  
REALTOR®

O: 601.898.2772 | C: 662.607.1703  
Allyson@TomSmithLand.com

**TomSmithLandandHomes.com**

Information is believed to be accurate but not guaranteed.





**MIKE ODOM**  
REALTOR®

O: 601.898.2772 | C: 601.927.5018  
MikeOdom@TomSmithLand.com



**ALLYSON MIZE**  
REALTOR®

O: 601.898.2772 | C: 662.607.1703  
Allyson@TomSmithLand.com

**TomSmithLandandHomes.com**

Information is believed to be accurate but not guaranteed.





**MIKE ODOM**  
REALTOR®

O: 601.898.2772 | C: 601.927.5018  
MikeOdom@TomSmithLand.com



**ALLYSON MIZE**  
REALTOR®

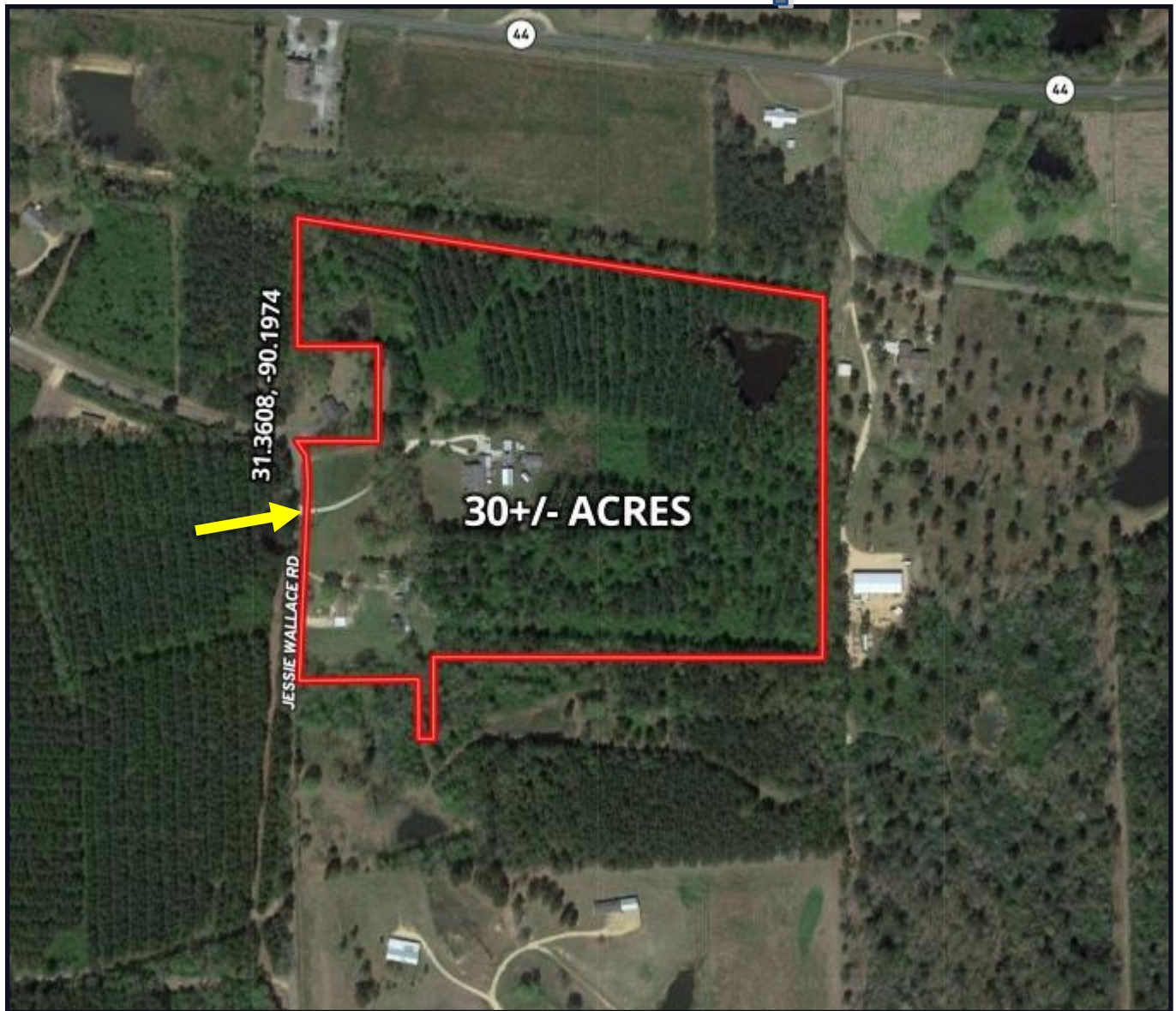
O: 601.898.2772 | C: 662.607.1703  
Allyson@TomSmithLand.com

**TomSmithLandandHomes.com**

Information is believed to be accurate but not guaranteed.



# Aerial Map



[Click for Interactive Map](#)

**MIKE ODOM**  
REALTOR®

O: 601.898.2772 | C: 601.927.5018  
MikeOdom@TomSmithLand.com



**ALLYSON MIZE**  
REALTOR®

O: 601.898.2772 | C: 662.607.1703  
Allyson@TomSmithLand.com

**TomSmithLandandHomes.com**

Information is believed to be accurate but not guaranteed.





**Ownership  
Map**



**Topo  
Map**

**MIKE ODOM**  
REALTOR®

O: 601.898.2772 | C: 601.927.5018  
MikeOdom@TomSmithLand.com



**ALLYSON MIZE**  
REALTOR®

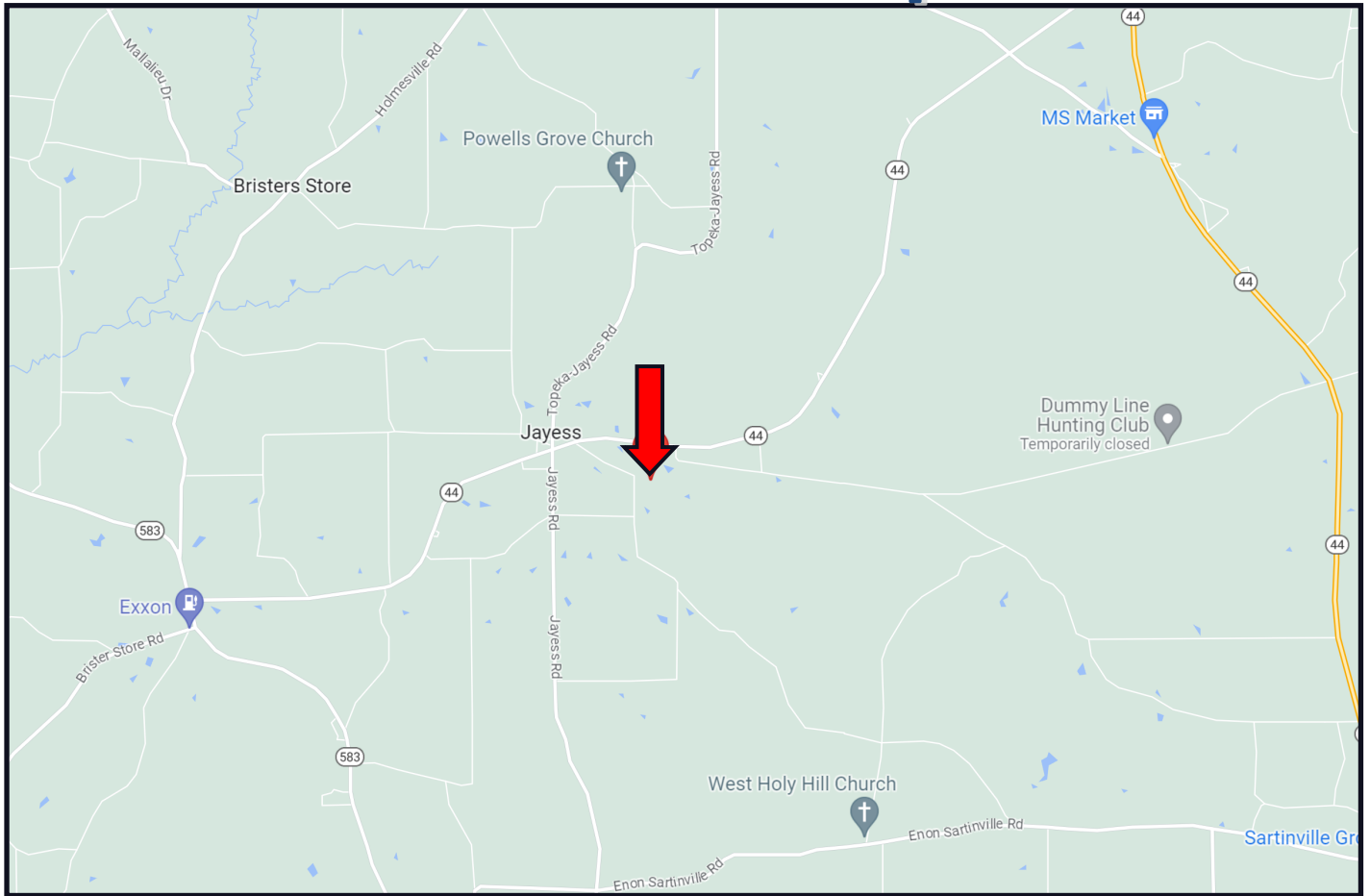
O: 601.898.2772 | C: 662.607.1703  
Allyson@TomSmithLand.com

**TomSmithLandandHomes.com**

Information is believed to be accurate but not guaranteed.



# Directional Map



Directions from Hwy 44 and Topeka-Jayess Rd. in Jayess, MS: From Hwy 44, travel south on Jessie Wallace Road for .4 miles. The home will be on your left.

Address: 85 Jessie Wallace Road Jayess, MS 39641

[GOOGLE MAP LINK](#)



**MIKE ODOM**  
REALTOR®

O: 601.898.2772 | C: 601.927.5018  
MikeOdom@TomSmithLand.com



**ALLYSON MIZE**  
REALTOR®

O: 601.898.2772 | C: 662.607.1703  
Allyson@TomSmithLand.com

**TomSmithLandandHomes.com**

Information is believed to be accurate but not guaranteed.

