

EXTRAORDINARY EVENT VENUE

70± Acres in Marion County, MS



\$1,200,000

- 70± Acre Commercial Property in Marion County, MS
- Ideal for church retreats, weddings, company functions, family reunions, etc.
- Conveniently Located Near Red Bluff and the Bogue Chitto River
- One large pavilion (60x84) with spray foam insulation
 - Game room/Recreation room
 - Storage Room with tables and chairs
 - 2 restrooms
 - Downstairs bedroom with 7 beds
 - Upstairs loft area with 10 beds
 - Large Kitchen in Pavilion
 - 3 door cooler
 - 2 door freezer
 - Icemaker
 - Storage racks
- Convection oven
- Flat top
- 2 basket fryer
- Range with oven and vent a hood
- 3 compartment sink
- Stainless tables
- Four additional pavilions with picnic tables
- Stocked pond with bass and bream
- 9-hole disc golf
- Additional storage shed
- Gun range
- Seven cabins
 - Each features a porch, bunk beds, 2 restrooms, and 2 showers
- New Scag Mower and Kubota Tractor Included

1608 MS-586 Foxworth, MS 39643



HALEY BELDEN, REALTOR®
Haley@TomSmithHomes.com
601.898.2772 office | 601.209.2310 cell



Expect More. Get More.

Call us today!



DAVID BELDEN, REALTOR®
DBelden@TomSmithLand.com
601.898.2772 office | 601.415.3884 cell

TomSmithLandandHomes.com

Information is believed to be accurate but not guaranteed.





Welcome to Camp Silver Creek! This amazing camp experience also doubles as a top-tier event venue. This property in Marion County offers a sprawling 70+/- acres of natural beauty and versatile amenities that will exceed your expectations. Whether planning a wedding, retreat, church event, family reunion, or any other gathering, this exceptional venue has everything you need to create unforgettable memories.

The highlight of this property is the expansive pavilion, boasting a generous size of 60x84, designed to accommodate large groups comfortably. Step inside and be greeted by the inviting atmosphere with a living area and game room. The pavilion features a recreational room and a storage room fully equipped with tables and chairs, ensuring ample space for all your event needs. Within the pavilion, you'll find two well-appointed restrooms for the convenience of your guests. Need additional sleeping arrangements? No problem! A cozy downstairs bedroom is furnished with seven beds, while the spacious upstairs loft offers ten beds, allowing for a restful night's sleep.

Regarding culinary needs, the pavilion's kitchen is a chef's dream. It boasts top-of-the-line appliances, including a three-door cooler, two-door freezer, ice maker, storage racks, convection oven, flat top, two-basket fryer, range with vent a hood, and a three-compartment sink. The stainless steel tables provide ample workspace for preparing delectable meals for your guests.

In addition to the pavilion, the property features seven charming cabins, each equipped with a porch, eight comfortable bunk beds, and two bathrooms with showers. Your guests will appreciate the cozy accommodations and the opportunity to relax and unwind amidst nature's beauty.

Throughout the property, you'll discover four pavilions strategically placed to offer picturesque picnic areas with tables, perfect for outdoor gatherings and enjoying the serene surroundings.

For water enthusiasts, the rock bottom spring feed stream will be a summer favorite for all your guests. A great pond awaits, providing a refreshing swimming spot and canoeing for guests to cool off during the warm summer. If fishing is your passion, you'll be delighted that the pond is stocked with bream and bass, offering an excellent opportunity to reel in memorable catches.

Disc golf enthusiasts can engage in friendly competition on the nine-hole disc golf course, providing hours of outdoor entertainment and fun for guests of all ages.

For those looking to improve their marksmanship, a dedicated gun range is available on the property, allowing enthusiasts to test their skills and enjoy a thrilling shooting experience.

Additional amenities include a spacious storage shed, ideal for storing equipment and supplies, and to make maintenance a breeze, a brand-new Scag Mower and Kubota Tractor are included with the property. Call Haley or David to schedule a viewing today and let your imagination run wild at this extraordinary destination!

HALEY BELDEN, REALTOR®
Haley@TomSmithHomes.com
601.898.2772 **office** | 601.209.2310 **cell**



DAVID BELDEN, REALTOR®
DBelden@TomSmithLand.com
601.898.2772 **office** | 601.415.3884 **cell**

TomSmithLandandHomes.com

Information is believed to be accurate but not guaranteed.





HALEY BELDEN, REALTOR®
Haley@TomSmithHomes.com
601.898.2772 **office** | 601.209.2310 **cell**



DAVID BELDEN, REALTOR®
DBelden@TomSmithLand.com
601.898.2772 **office** | 601.415.3884 **cell**

TomSmithLandandHomes.com

Information is believed to be accurate but not guaranteed.





HALEY BELDEN, REALTOR®
 Haley@TomSmithHomes.com
 601.898.2772 office | 601.209.2310 cell



DAVID BELDEN, REALTOR®
 DBelden@TomSmithLand.com
 601.898.2772 office | 601.415.3884 cell

TomSmithLandandHomes.com

Information is believed to be accurate but not guaranteed.





HALEY BELDEN, REALTOR®
 Haley@TomSmithHomes.com
 601.898.2772 office | 601.209.2310 cell



DAVID BELDEN, REALTOR®
 DBelden@TomSmithLand.com
 601.898.2772 office | 601.415.3884 cell

TomSmithLandandHomes.com

Information is believed to be accurate but not guaranteed.





HALEY BELDEN, REALTOR®
 Haley@TomSmithHomes.com
 601.898.2772 office | 601.209.2310 cell



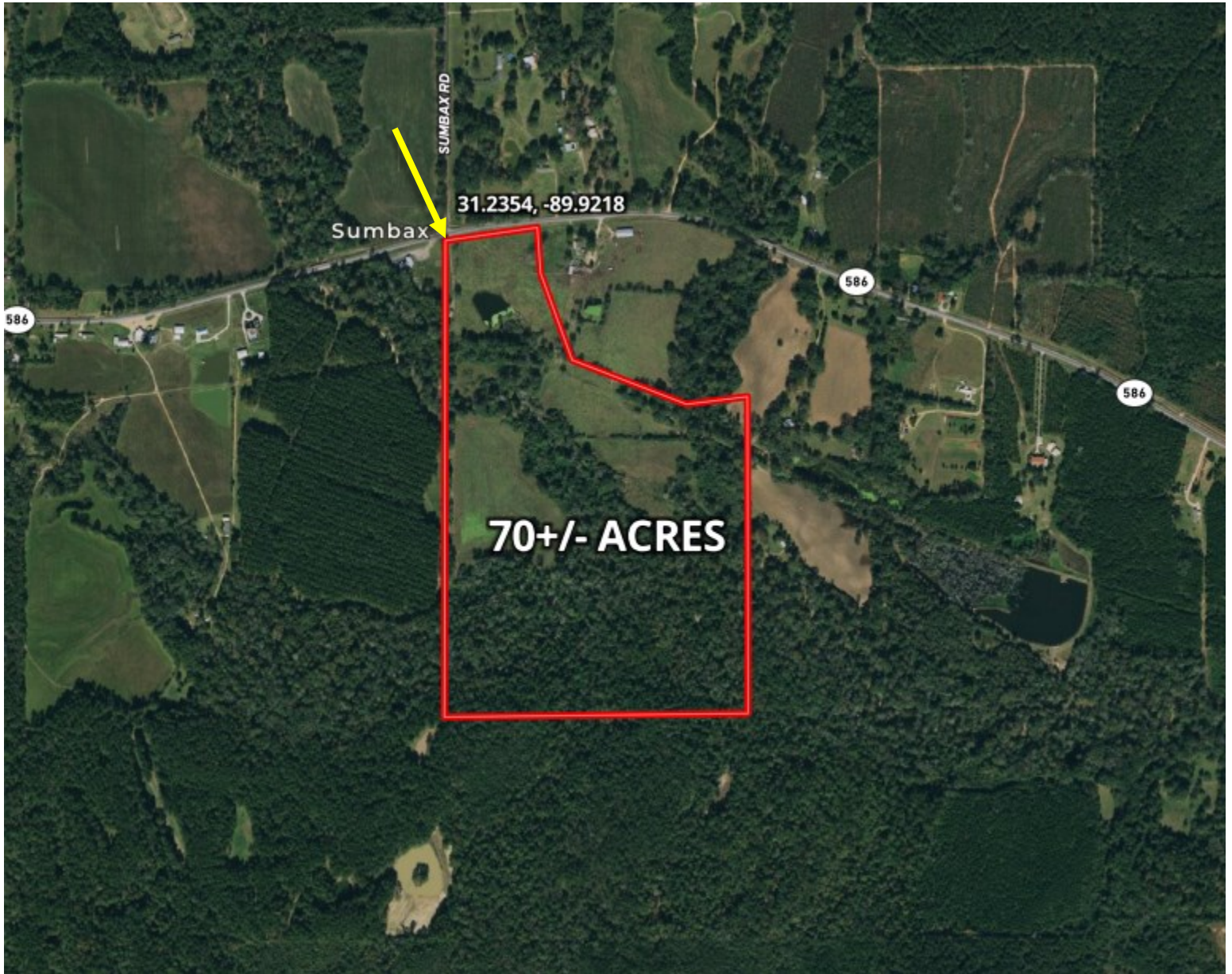
DAVID BELDEN, REALTOR®
 DBelden@TomSmithLand.com
 601.898.2772 office | 601.415.3884 cell

TomSmithLandandHomes.com

Information is believed to be accurate but not guaranteed.



AERIAL MAP



[CLICK HERE FOR AN INTERACTIVE MAP](#)

HALEY BELDEN, REALTOR®
Haley@TomSmithHomes.com
601.898.2772 **office** | 601.209.2310 **cell**



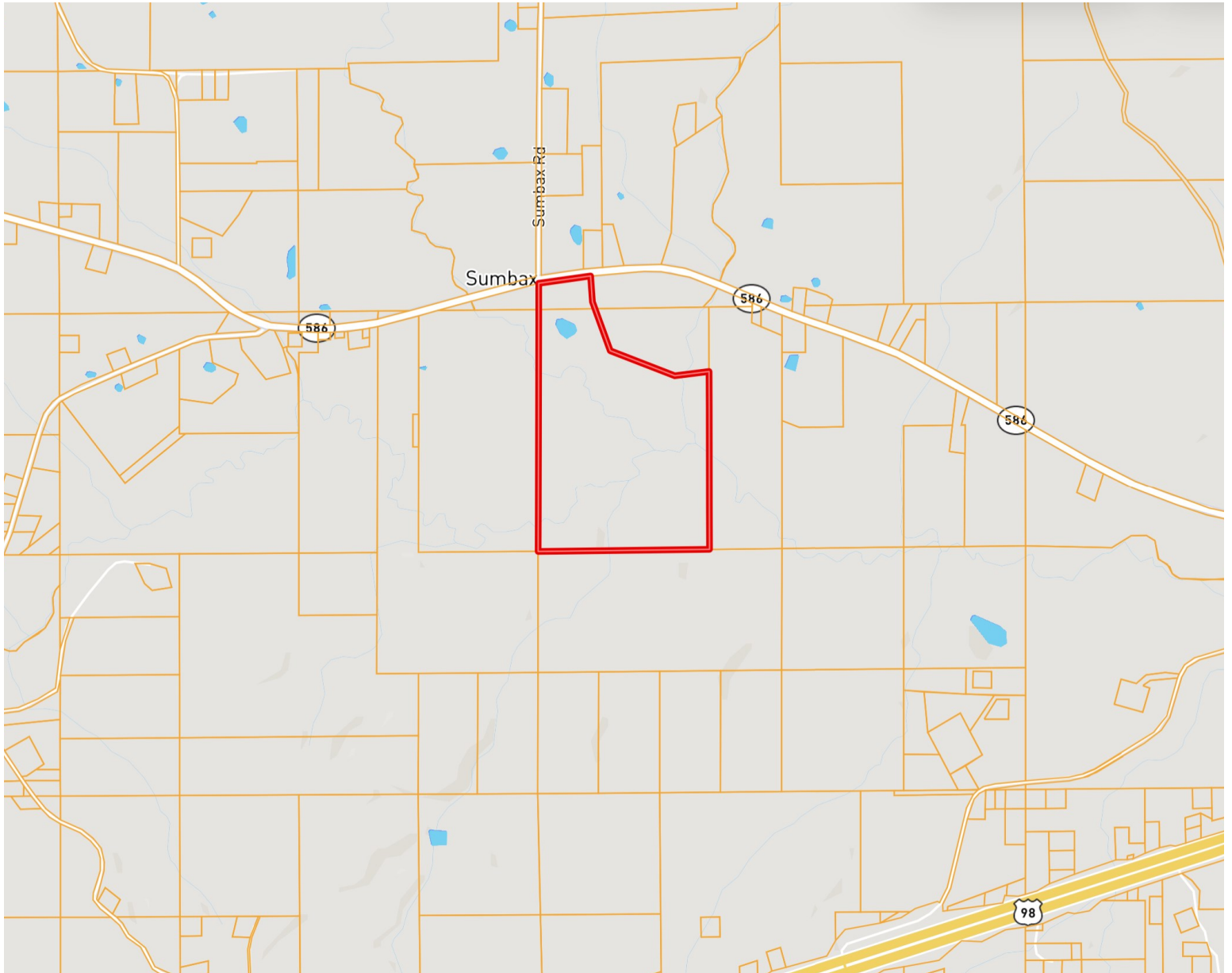
DAVID BELDEN, REALTOR®
DBelden@TomSmithLand.com
601.898.2772 **office** | 601.415.3884 **cell**

TomSmithLandandHomes.com

Information is believed to be accurate but not guaranteed.



OWNERSHIP MAP



HALEY BELDEN, REALTOR®
Haley@TomSmithHomes.com
601.898.2772 office | 601.209.2310 cell



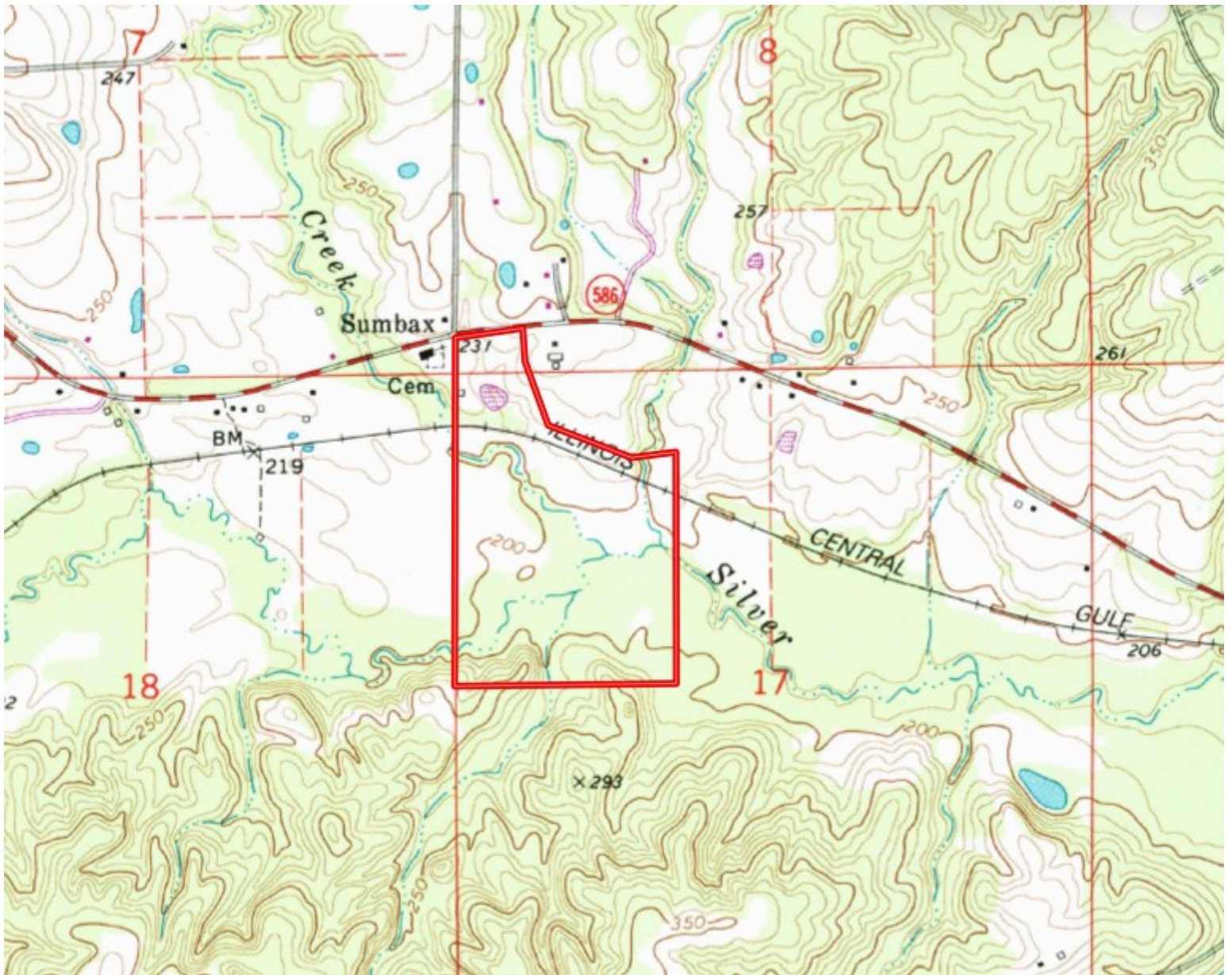
DAVID BELDEN, REALTOR®
DBelden@TomSmithLand.com
601.898.2772 office | 601.415.3884 cell

TomSmithLandandHomes.com

Information is believed to be accurate but not guaranteed.



TOPO MAP



HALEY BELDEN, REALTOR®
Haley@TomSmithHomes.com
601.898.2772 office | 601.209.2310 cell



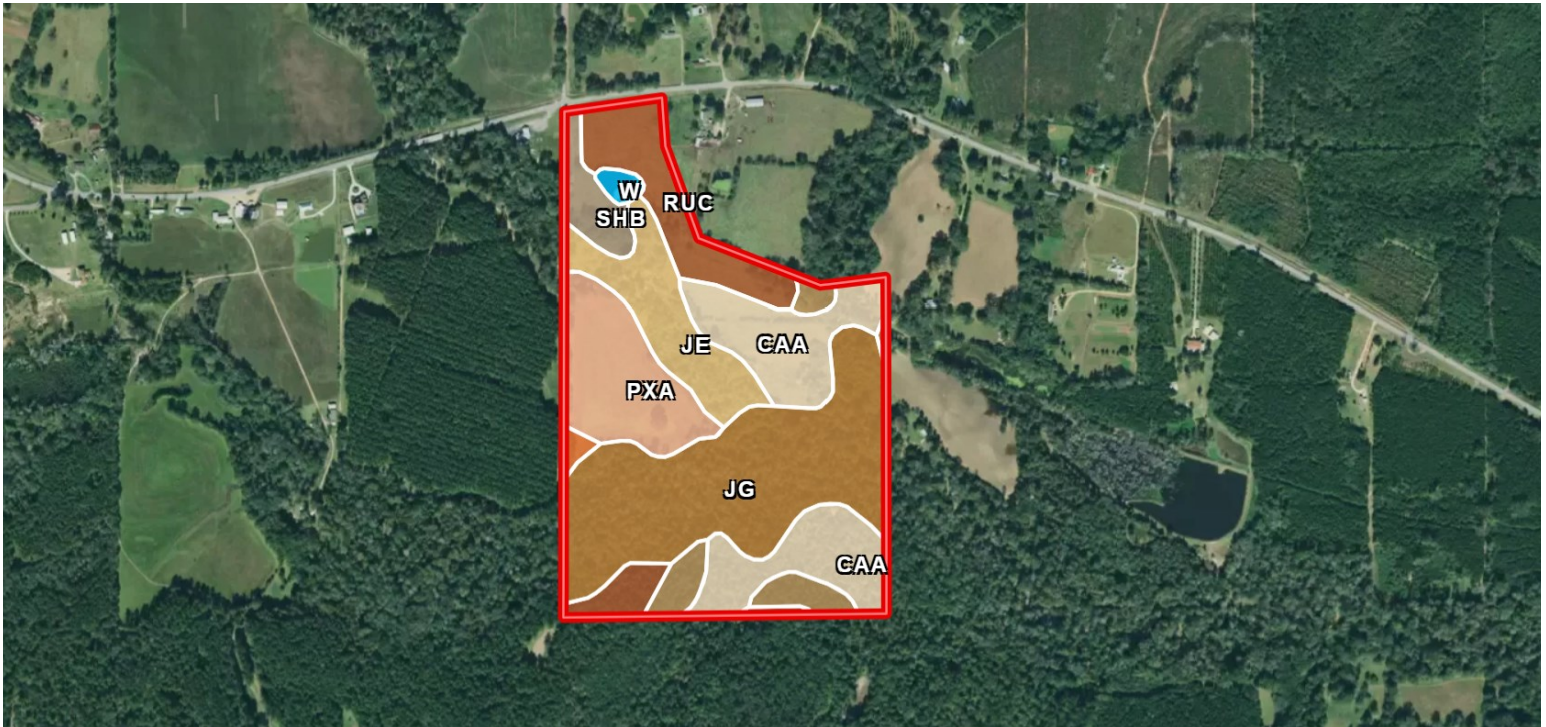
DAVID BELDEN, REALTOR®
DBelden@TomSmithLand.com
601.898.2772 office | 601.415.3884 cell

TomSmithLandandHomes.com

Information is believed to be accurate but not guaranteed.



SOIL MAP



SOIL CODE	SOIL DESCRIPTION	ACRES	%	CPI	NCCPI	CAP
Jg	Jena-Bigbee complex, frequently flooded	33.31	32.67	0	43	5w
CaA	Cahaba fine sandy loam, 0 to 2 percent slopes	20.08	19.69	0	54	1e
RuC	Ruston sandy loam, 5 to 8 percent slopes	13.35	13.09	0	52	3e
PxA	Prentiss fine sandy loam, 0 to 2 percent slopes	13.04	12.79	0	44	2w
Je	Jena fine sandy loam, frequently flooded	11.0	10.79	0	52	5w
SkF	Smithdale fine sandy loam, 12 to 40 percent slopes	5.44	5.34	0	31	7e
ShB	Savannah fine sandy loam, 2 to 5 percent slopes	3.95	3.87	0	54	2e
W	Water	0.94	0.92	0	-	-
LaA	Latonia sandy loam, 0 to 2 percent slopes	0.77	0.76	0	41	2s
RuB	Ruston sandy loam, 2 to 5 percent slopes	0.08	0.08	0	53	2e

HALEY BELDEN, REALTOR®
 Haley@TomSmithHomes.com
 601.898.2772 office | 601.209.2310 cell



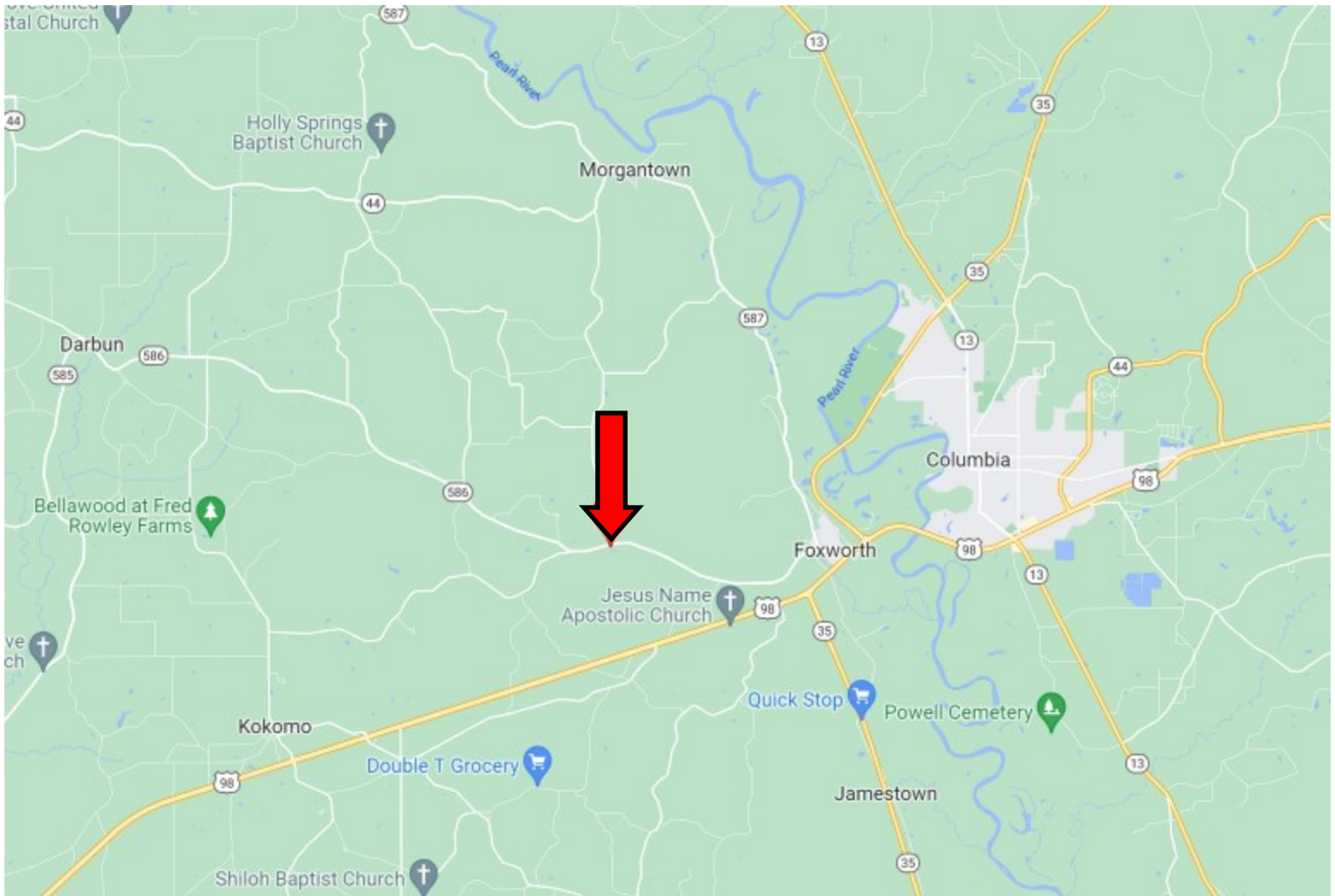
DAVID BELDEN, REALTOR®
 DBelden@TomSmithLand.com
 601.898.2772 office | 601.415.3884 cell

TomSmithLandandHomes.com

Information is believed to be accurate but not guaranteed.



DIRECTIONAL MAP



DIRECTIONS FROM THE INTERSECTION OF HWY 98 AND HWY 35 IN FOXWORTH, MS:

Head southwest on US-98 W for 1.3 miles. Turn right onto Old Morgantown Rd and keep left onto MS-44 W/MS-586. Travel 3.8 miles then the property will be on your left.

[Click for Directions: 1608 MS-586 Foxworth, MS 39643](#)



HALEY BELDEN, REALTOR®
Haley@TomSmithHomes.com
601.898.2772 office | 601.209.2310 cell



Expect More. Get More.

Call us today!



DAVID BELDEN, REALTOR®
DBelden@TomSmithLand.com
601.898.2772 office | 601.415.3884 cell

TomSmithLandandHomes.com

Information is believed to be accurate but not guaranteed.

