

701 S. Court Street, Cleveland, MS | \$176,500



Check out this three-bedroom, two-bathroom home built in 1940 in Cleveland, Bolivar County. The house is loaded with character! It has three adorable bedrooms and two full bathrooms. The den has a gas fireplace with built-in bookshelves on both sides and French doors that look out over the front yard. The kitchen has a gas range with fabulous French doors that look out into the backyard. Delta State University is right down the road, making it convenient for students or teachers to play ball games, play tennis, go to Chic-fil-A, and go to Starbucks! Call Tracey Bell to schedule your private showing!



**TRACEY  
BELL**

MANAGING BROKER

Office: 662.441.2500

Cell: 662.719.4720

Tracey@TomSmithLand.com



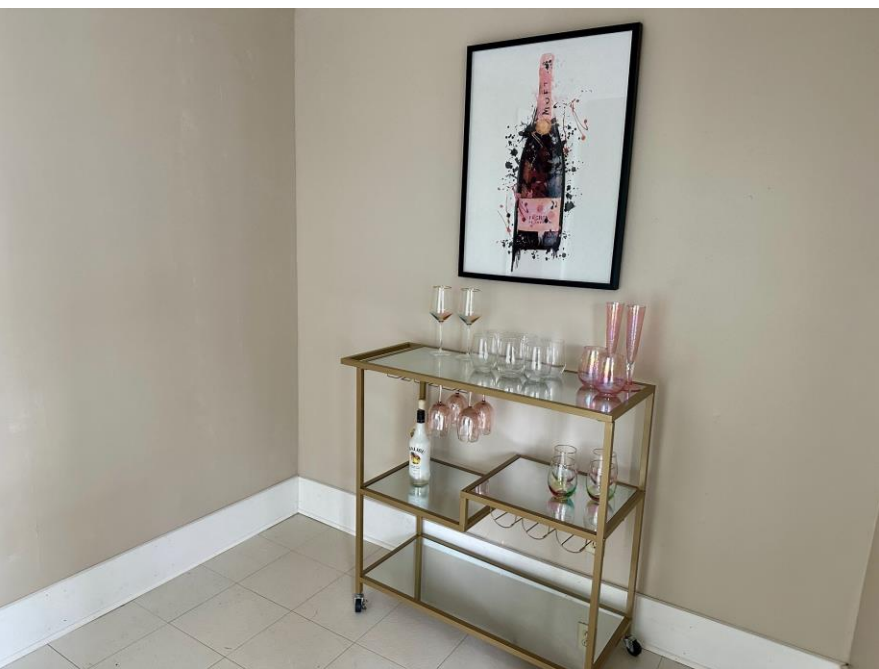
Expect More. Get More.

**A Real Estate Expert You Can Trust**

TomSmithLandandHomes.com

Information is believed to be accurate but not guaranteed.





TRACEY  
**BELL**

MANAGING BROKER

Office: 662.441.2500

Cell: 662.719.4720

Tracey@TomSmithLand.com



A Real Estate Expert You Can Trust

TomSmithLandandHomes.com

Information is believed to be accurate but not guaranteed.





- Hardwood Floors
- Fireplace
- French Doors
- Gas Range
- 3 Bedrooms
- 2 Bathrooms
- 1,769± SF
- 0.18± Acre Lot
- Privacy Fence
- Built in 1940

**TRACEY  
BELL**

MANAGING BROKER

Office: 662.441.2500

Cell: 662.719.4720

Tracey@TomSmithLand.com



**A Real Estate Expert You Can Trust**  
TomSmithLandandHomes.com

Information is believed to be accurate but not guaranteed.





**TRACEY**  
**BELL**  
 MANAGING BROKER  
 Office: 662.441.2500  
 Cell: 662.719.4720  
 Tracey@TomSmithLand.com

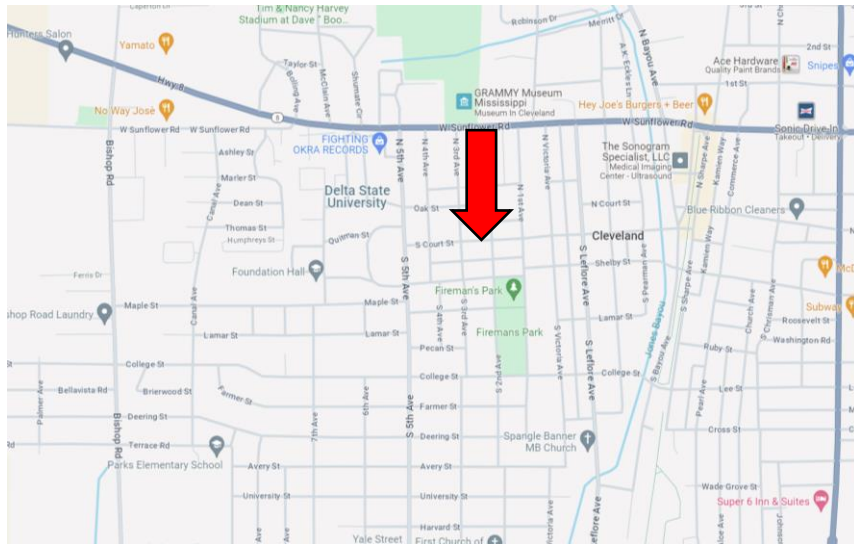
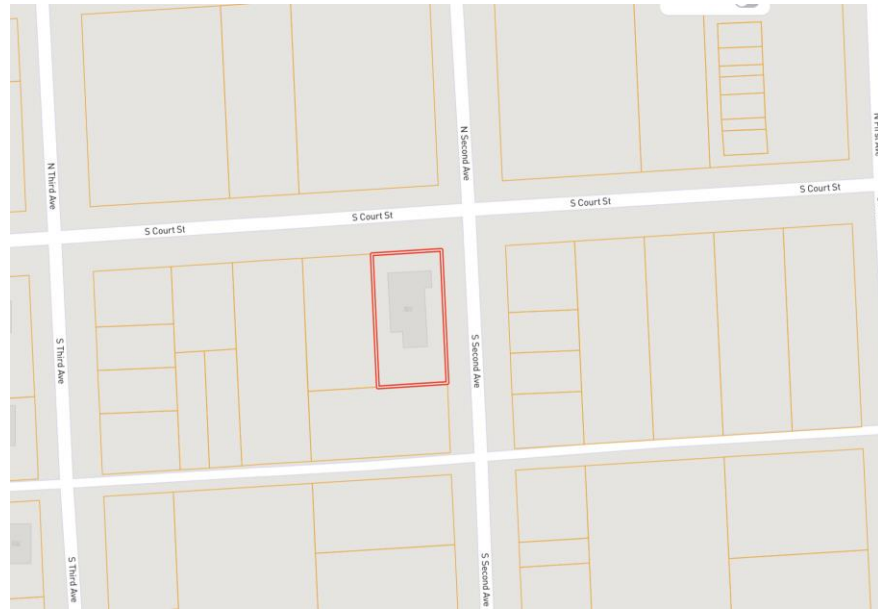


**A Real Estate Expert You Can Trust**  
 TomSmithLandandHomes.com

Information is believed to be accurate but not guaranteed.



# MAPS | [Click for Interactive Map](#)



**Address: 701 South Court Street, Cleveland, MS 38732**

**Directions from Hwy 8 & Hwy 61 in Cleveland, MS:**  
Travel west on E. Sunflower Road for 0.7 miles, then turn left onto N. Victoria Avenue. After 0.3 miles, turn right onto S. Court Street. After 0.2 miles, the home will be on the right. [Click for Google Maps.](#)



**TRACEY  
BELL**

MANAGING BROKER

Office: 662.441.2500

Cell: 662.719.4720

[Tracey@TomSmithLand.com](mailto:Tracey@TomSmithLand.com)



Expect More. Get More.

**A Real Estate Expert You Can Trust**

[TomSmithLandandHomes.com](http://TomSmithLandandHomes.com)

Information is believed to be accurate but not guaranteed.

