

# 42.23 +/- Acre Hunting Tract Jefferson County, MS



Introducing an exceptional opportunity in Jefferson County, MS! This sprawling 42.23+/- acre parcel is the epitome of versatility, making it ideal for hunting, timber investment, a potential homesite, and more. If you're seeking a compact hunting haven, look no further. Abundant with wildlife, this property promises an exciting and rewarding experience. Moreover, you'll find the convenience of water and electricity readily available at the front of the property. Situated just a short distance from the renowned Homochitto National Forest, which boasts thousands of acres of pristine public land for hunting, this property serves as an excellent base camp option.

Additionally, the property features recently thinned timber, offering both aesthetic appeal and potential income. Multiple cabin sites are available, allowing you to design your dream getaway, and a tranquil pond adds to the allure. With over a quarter-mile of road frontage, accessibility is a breeze. As a bonus, the property adjoins 640+/- acres of Jefferson County school board property currently leased out for hunting but could be added to your hunting in the future. Take advantage of this remarkable opportunity to own a piece of Jefferson County's natural beauty. Whether you're a hunting enthusiast, timber investor, or aspiring homeowner, this property offers something unique. Act now and secure your slice of paradise today! Give Blake a call to schedule your private tour!

Directions from the intersection of Hwy 28 & 550 in Union Church, MS:  
Turn onto Union Church Road and travel for 1.6 miles. The destination will be on your left.

*Call me today!*

**BLAKE SASSER**, REALTOR®  
Blake@TomSmithLand.com  
601.990.5070 **office** | 601.757.5027 **cell**



**TomSmithLandandHomes.com**

Information is believed to be accurate but not guaranteed.





*Call me today!*



**BLAKE SASSER, REALTOR®**  
Blake@TomSmithLand.com  
601.990.5070 **office** | 601.757.5027 **cell**

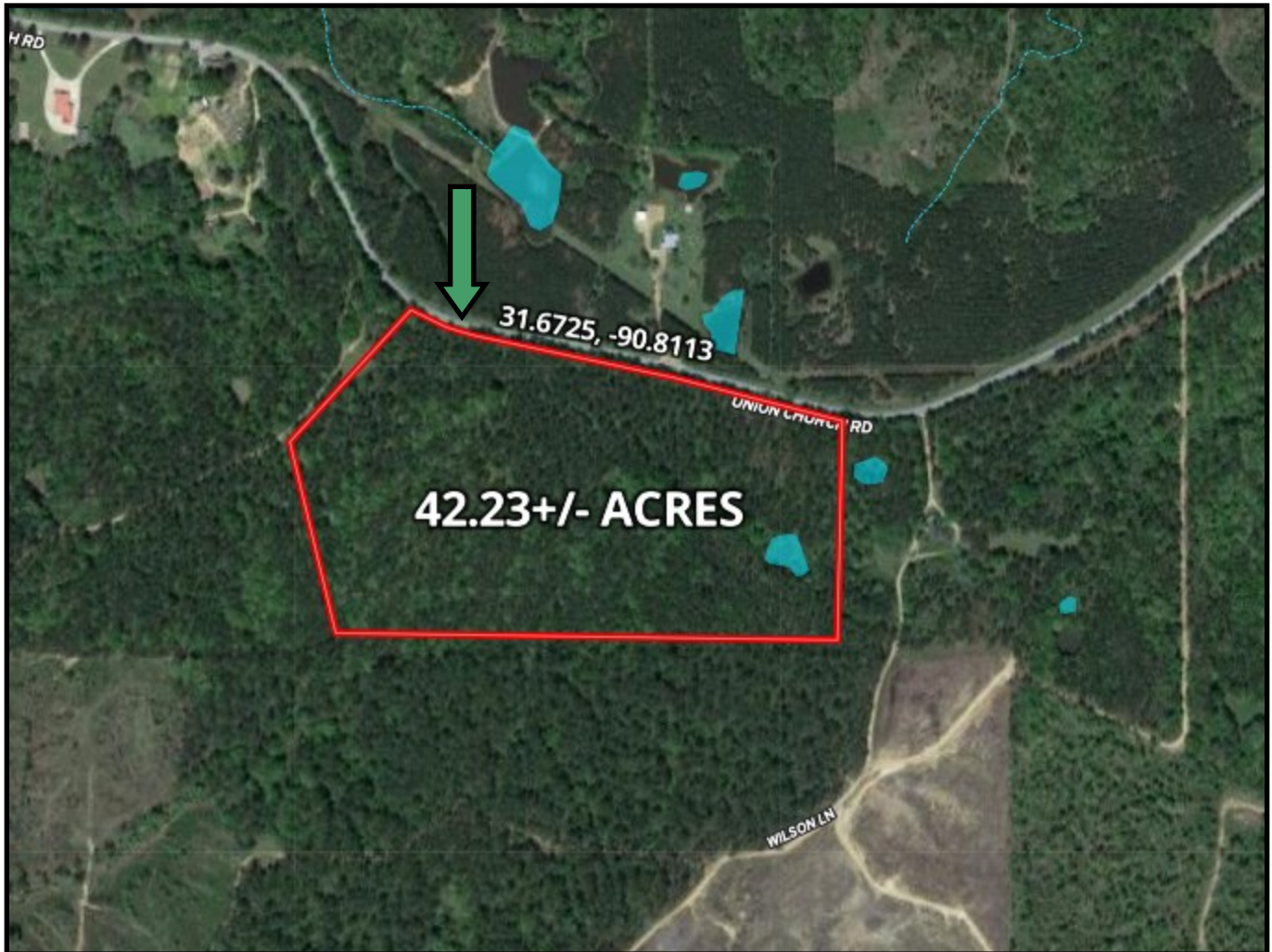


**TomSmithLandandHomes.com**

Information is believed to be accurate but not guaranteed.



# Aerial Map



[CLICK HERE FOR AN INTERACTIVE MAP](#)

*Call me today!*

**BLAKE SASSER**, REALTOR®  
Blake@TomSmithLand.com  
601.990.5070 **office** | 601.757.5027 **cell**



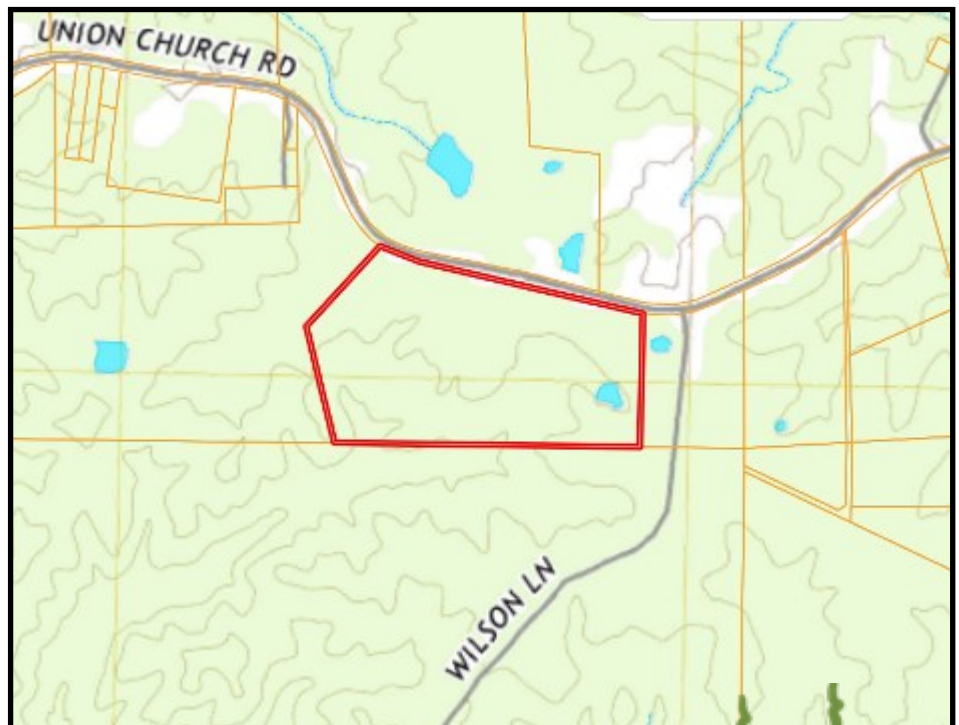
**TomSmithLandandHomes.com**

Information is believed to be accurate but not guaranteed.



Ownership  
Map

Topo  
Map



*Call me today!*

**BLAKE SASSER**, REALTOR®  
 Blake@TomSmithLand.com  
 601.990.5070 **office** | 601.757.5027 **cell**



**TomSmithLandandHomes.com**

Information is believed to be accurate but not guaranteed.

# Directional Map



Directions from the intersection of Hwy 28 & 550 in Union Church, MS:

Turn onto Union Church Road and travel for 1.6 miles. The destination will be on your left.

[Google Map Link](#)



*Call me today!*

**BLAKE SASSER**, REALTOR®  
Blake@TomSmithLand.com  
601.990.5070 **office** | 601.757.5027 **cell**



**TomSmithLandandHomes.com**

Information is believed to be accurate but not guaranteed.