

45± Acre Hunting Camp Carroll County, MS



\$175,000

Are you looking for a weekend getaway to enjoy excellent hunting and fishing with the family? Look no further than this 45± acre hunting camp in Carroll County, MS! Located just under 16 miles southwest of crappie fishing central - Grenada, MS. This tract features an older two-bedroom, one-bath home that could be converted into the perfect camp house, two food plot locations, an internal trail system, and a 1.5± acre lake stocked with crappie, bream, and bass. The camp house is being sold "as-is" and requires some TLC. Numerous deer and turkey signs were noted during the initial inspection. There's a small storage barn with electricity that can provide additional storage to keep your equipment out of the elements. The timber makeup is a mixture of scattered hardwoods and pines. There's gravel road frontage with utilities provided through poor house water association and Delta EPA. Enjoy the luxury of being able to hunt and fish in your backyard! Tracts like this can be hard to find. Call Kadero Edley for your private viewing today!



**KADERO
EDLEY**
REALTOR®

Office: 601.898.2772
Cell: 601.488.7000

Kadero@TomSmithLand.com

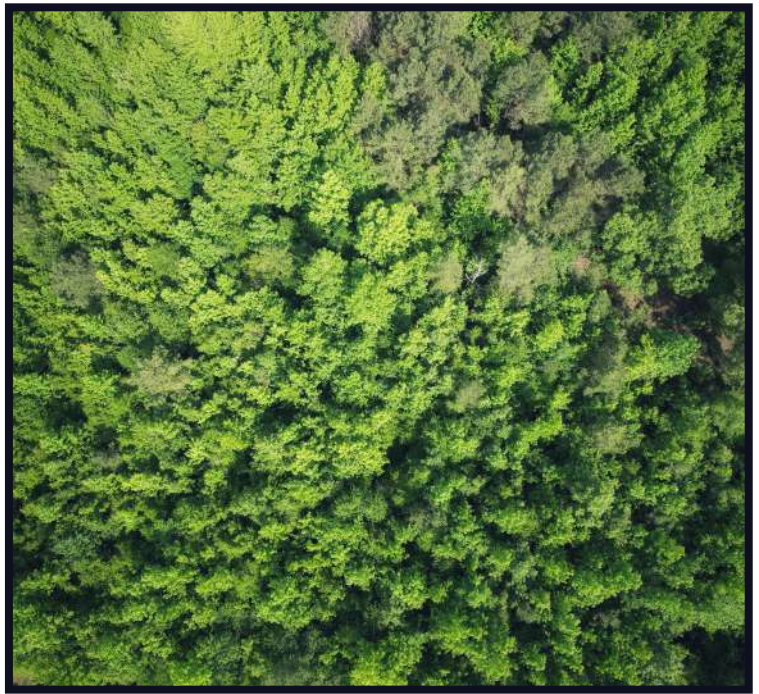


A Real Estate Expert You Can Trust

TomSmithLandandHomes.com

Information is believed to be accurate but not guaranteed.

2011-2023
BEST
BROKERAGES



KADERO EDLEY
REALTOR®

Office: 601.898.2772

Cell: 601.488.7000

Kadero@TomSmithLand.com



A Real Estate Expert You Can Trust
TomSmithLandandHomes.com

Information is believed to be accurate but not guaranteed.

LandReport
2011-2023
BEST
BROKERAGES



KADERO EDLEY
REALTOR®

Office: 601.898.2772

Cell: 601.488.7000

Kadero@TomSmithLand.com

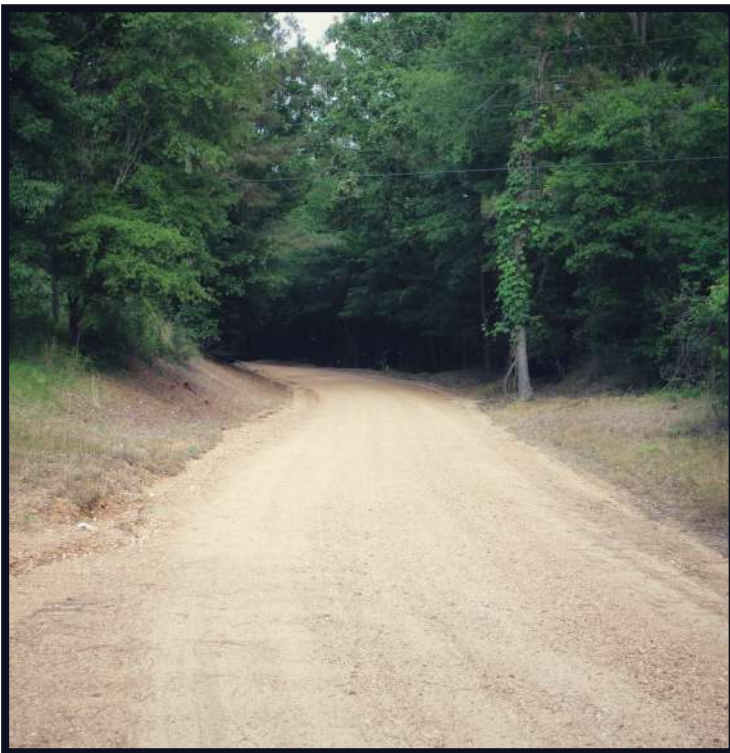


A Real Estate Expert You Can Trust

TomSmithLandandHomes.com

Information is believed to be accurate but not guaranteed.





KADERO EDLEY

REALTOR®

Office: 601.898.2772

Cell: 601.488.7000

Kadero@TomSmithLand.com



Expect More. Get More.

A Real Estate Expert You Can Trust

TomSmithLandandHomes.com

Information is believed to be accurate but not guaranteed.



Aerial Map



[Click Here for Interactive Map](#)

KADERO EDLEY

REALTOR®

Office: 601.898.2772

Cell: 601.488.7000

Kadero@TomSmithLand.com



Expect More. Get More.

A Real Estate Expert You Can Trust

TomSmithLandandHomes.com

Information is believed to be accurate but not guaranteed.



Ownership Map



KADERO EDLEY

REALTOR®

Office: 601.898.2772

Cell: 601.488.7000

Kadero@TomSmithLand.com



Expect More. Get More.

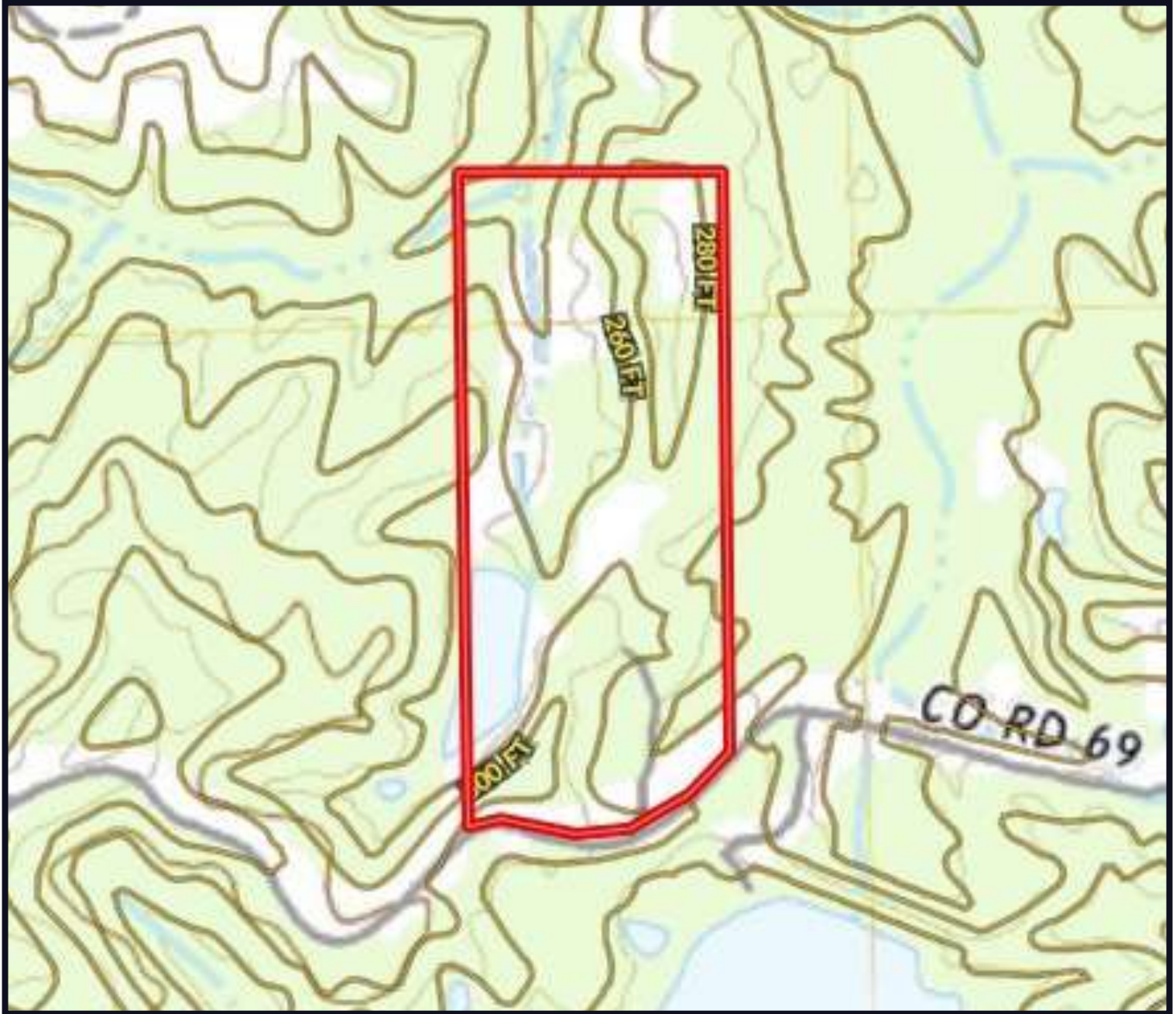
A Real Estate Expert You Can Trust

TomSmithLandandHomes.com

Information is believed to be accurate but not guaranteed.

LineReport
2011-2023
BEST
BROKERAGES

Topographic Map



KADERO EDLEY
REALTOR®

Office: 601.898.2772

Cell: 601.488.7000

Kadero@TomSmithLand.com



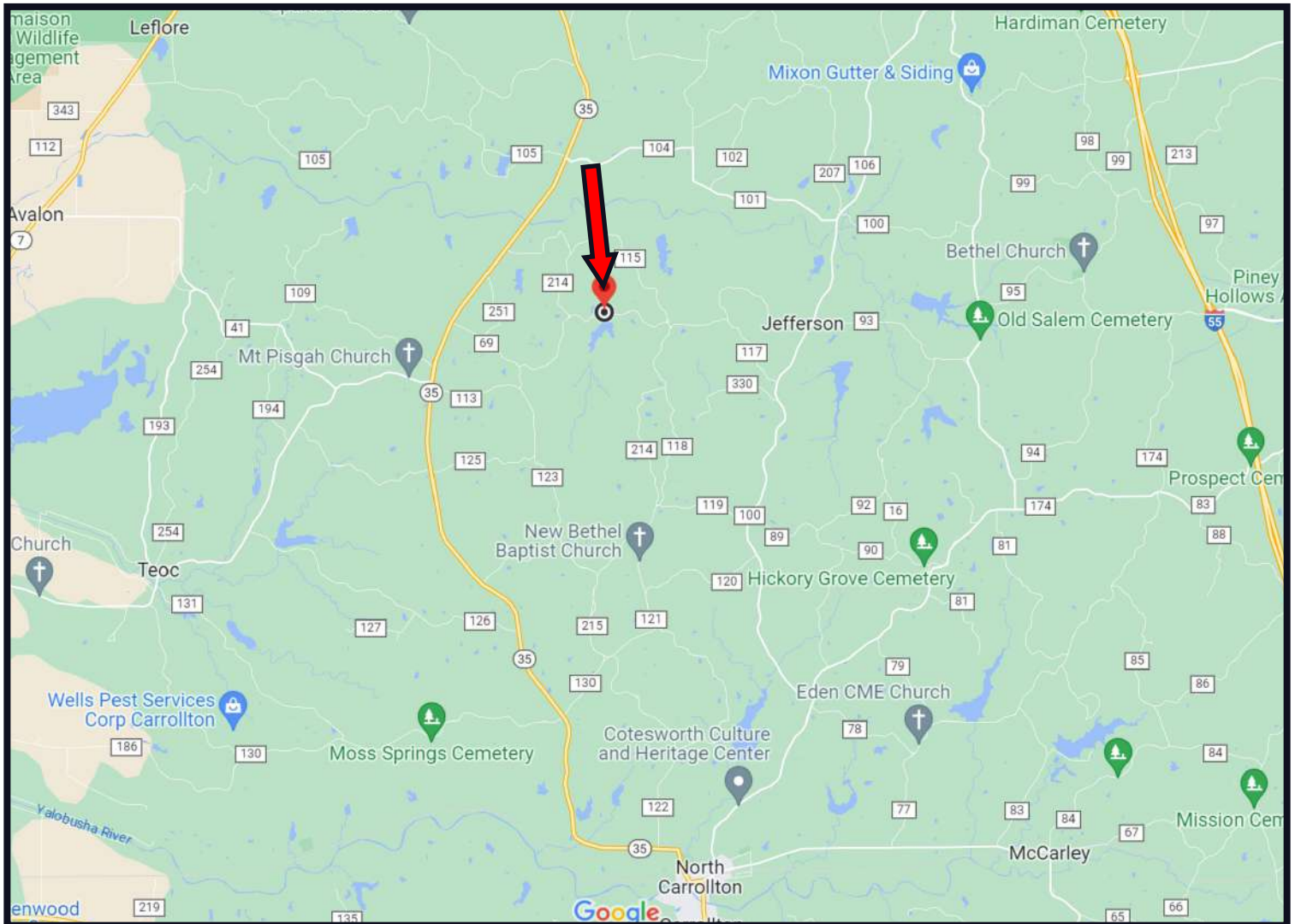
A Real Estate Expert You Can Trust

TomSmithLandandHomes.com

Information is believed to be accurate but not guaranteed.

Livestat
2011-2023
BEST
BROKERAGES

Directional Map



Directions from I-55 and Hwy 8 in Grenada, MS: Travel Hwy 8 for 7.8 miles. Turn left onto Hwy 35 and travel 8.8 miles. Turn left onto CR 214 and travel 2.4 miles. Turn left onto CR 69. After .6 miles the property will be on your right

[Google Maps Link](#)



**KADERO
EDLEY**
REALTOR®

Office: 601.898.2772

Cell: 601.488.7000

Kadero@TomSmithLand.com



Expect More. Get More.

A Real Estate Expert You Can Trust

TomSmithLandandHomes.com

Information is believed to be accurate but not guaranteed.

