



OUTDOORSMAN'S PARADISE 60± ACRES IN KEMPER COUNTY, MS



\$126,000

Discover your own outdoorsman's paradise in the beautiful flat woods of Kemper County, MS! This 60± acre property is abundant with wildlife, presenting a golden opportunity for avid hunters seeking to harvest trophy deer and turkeys. The property features two strategically positioned shooting houses and spacious food plots that can be further expanded to accommodate your vision. A meandering creek gracefully traverses the land from north to south, enhancing the distinctive character of this exceptional tract. Approximately 45± acres of the property encompass a thriving 15-year-old planted pine plantation, serving as a lucrative timber investment. Don't hesitate to contact me today to arrange a private showing and experience the beauty of this property firsthand. Give Brett a call to schedule your private showing today!



**BRETT
CARNEY**
REALTOR®

Office: 601.898.2772

Cell: 601.710.9633

Brett@TomSmithLand.com



A Real Estate Expert You Can Trust

TomSmithLandandHomes.com

Information is believed to be accurate but not guaranteed.





BRETT CARNEY

REALTOR®

Office: 601.898.2772

Cell: 601.710.9633

Brett@TomSmithLand.com



A Real Estate Expert You Can Trust

TomSmithLandandHomes.com

Information is believed to be accurate but not guaranteed.





BRETT CARNEY

REALTOR®

Office: 601.898.2772

Cell: 601.710.9633

Brett@TomSmithLand.com



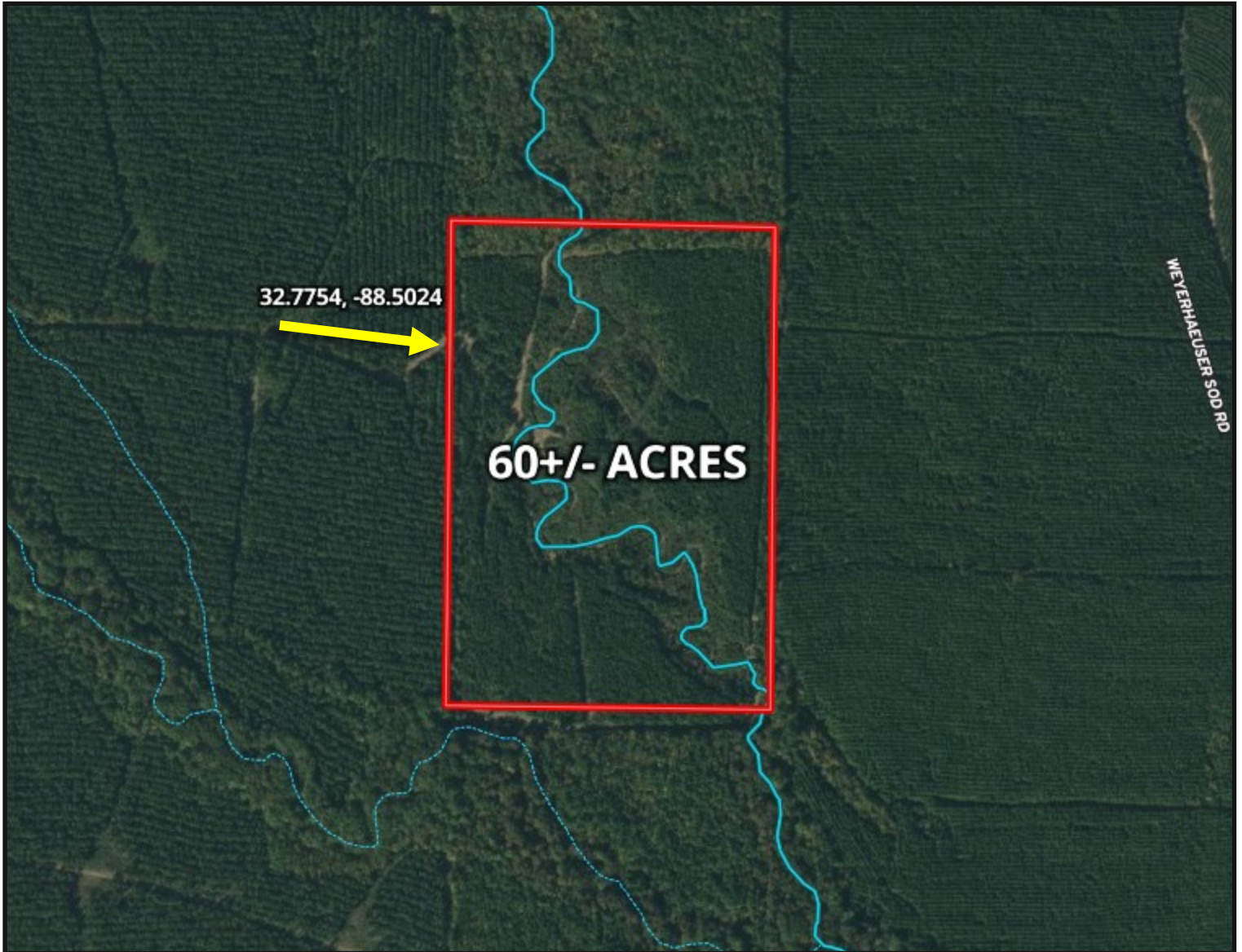
A Real Estate Expert You Can Trust

TomSmithLandandHomes.com

Information is believed to be accurate but not guaranteed.



AERIAL MAP



[CLICK HERE FOR AN INTERACTIVE MAP](#)

BRETT CARNEY

REALTOR®

Office: 601.898.2772

Cell: 601.710.9633

Brett@TomSmithLand.com



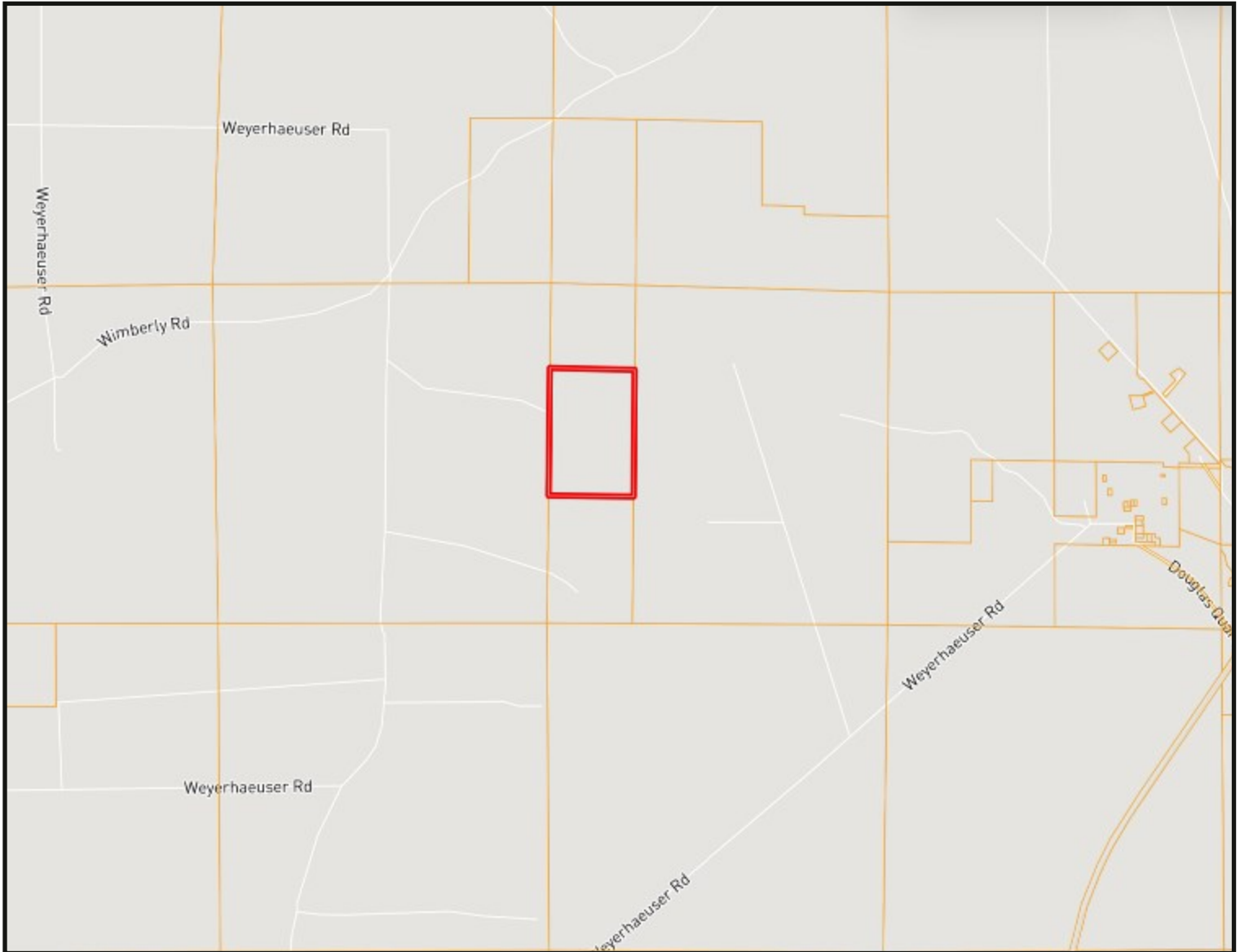
A Real Estate Expert You Can Trust

TomSmithLandandHomes.com

Information is believed to be accurate but not guaranteed.



OWNERSHIP MAP



BRETT CARNEY

REALTOR®

Office: 601.898.2772

Cell: 601.710.9633

Brett@TomSmithLand.com



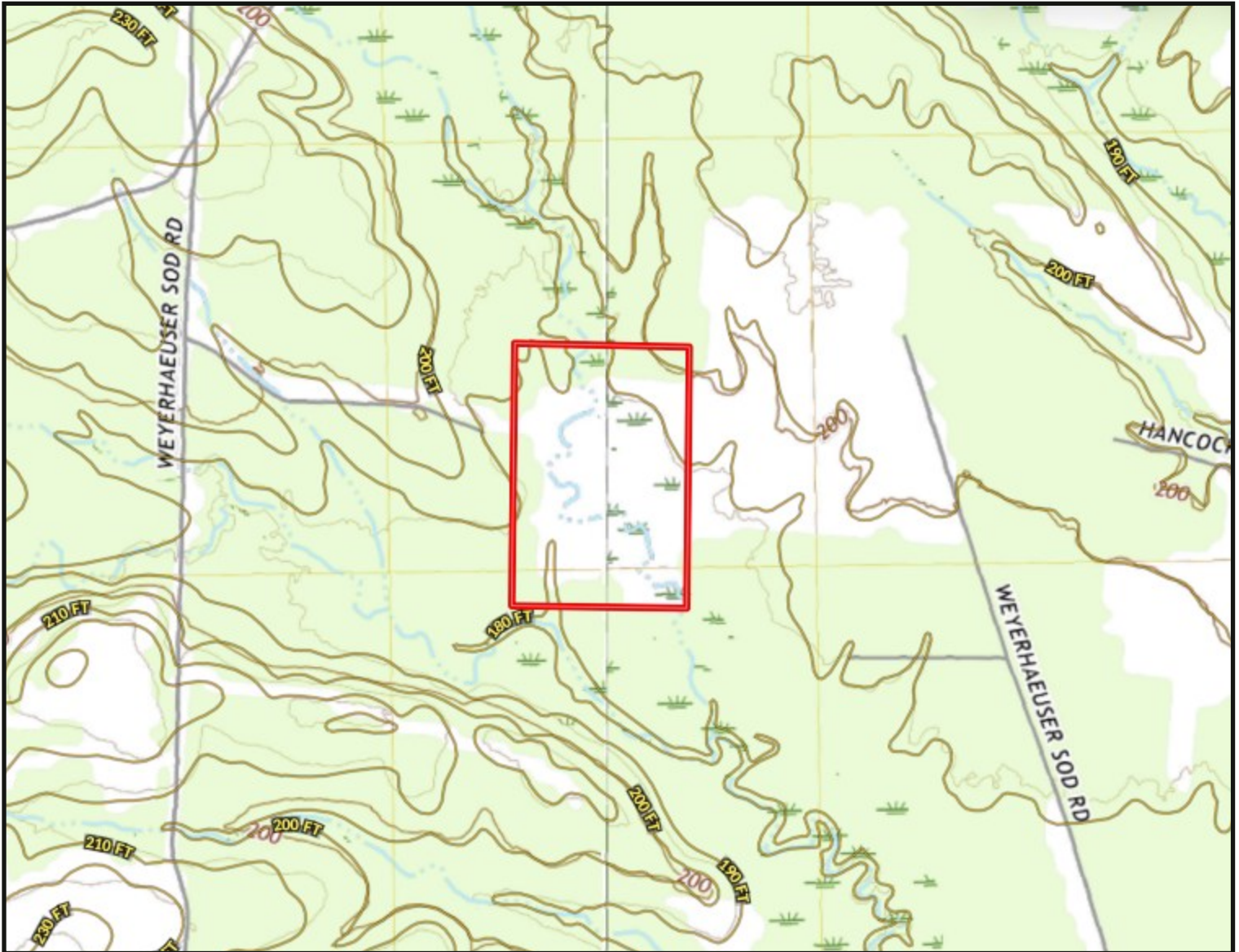
A Real Estate Expert You Can Trust

TomSmithLandandHomes.com

Information is believed to be accurate but not guaranteed.



TOPOGRAPHY MAP



BRETT CARNEY

REALTOR®

Office: 601.898.2772

Cell: 601.710.9633

Brett@TomSmithLand.com



A Real Estate Expert You Can Trust

TomSmithLandandHomes.com

Information is believed to be accurate but not guaranteed.



FOOD PLOT/STAND MAP



BRETT CARNEY

REALTOR®

Office: 601.898.2772

Cell: 601.710.9633

Brett@TomSmithLand.com



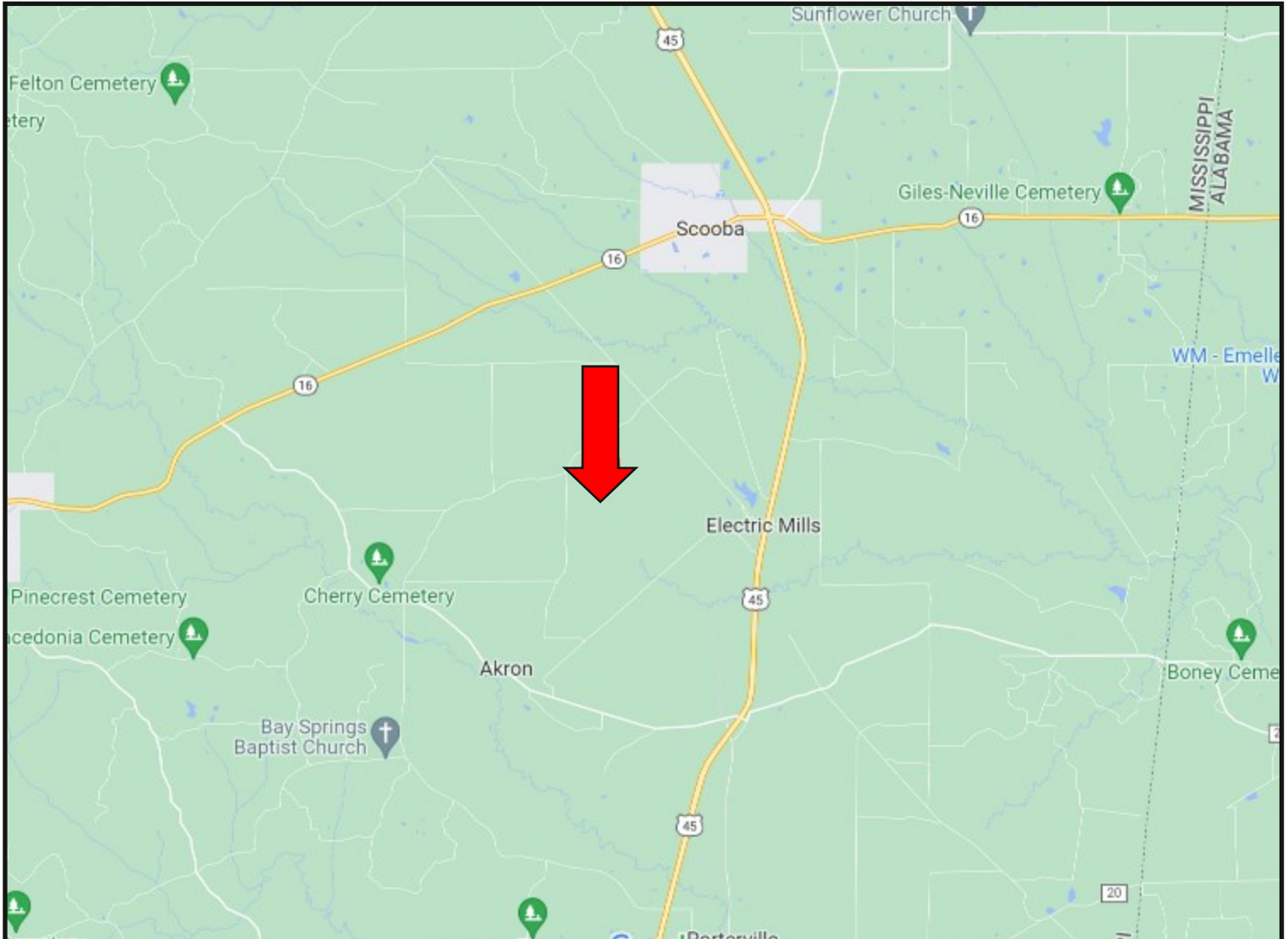
A Real Estate Expert You Can Trust

TomSmithLandandHomes.com

Information is believed to be accurate but not guaranteed.



DIRECTIONAL MAP



DIRECTIONS FROM HWY 45 AND HWY 16 IN SCOوبا, MS: Travel Hwy 16 for 3.2 miles. Turn left onto Dummy Line Road and travel 2.1 miles. Turn right onto Wimberly Road and travel 1.5 miles. Turn left onto Weyerhaeuser Sod Road. After .3 miles the entrance to the property will be on the left. [GOOGLE MAP LINK](#)

BRETT CARNEY

REALTOR®

Office: 601.898.2772

Cell: 601.710.9633

Brett@TomSmithLand.com



A Real Estate Expert You Can Trust

TomSmithLandandHomes.com

Information is believed to be accurate but not guaranteed.

