



68.5 ± ACRE TIMBERLAND TRACT IN ATTALA COUNTY, MS



\$185,650

Are you looking for a good investment that also offers excellent hunting? Well, here it is! This 68.5+/- acre property in Attala County provides you both. This tract consists of 59.8+/- acres of pines replanted in 2016 and 8.7 +/- acres of mixed timber planted in 1984. There is an internal road system throughout, giving you easy access to all areas of the property. Many of the trails and loading docks could be used for food plots to hunt those bucks hiding deep in the timber. Using the natural terrain of the property and setting your stand into the tree lines of mature timber, you can cut off those bucks using the natural travel corridors. There is also over 570 feet of road frontage on County Road 3102, and water and power are available nearby. This tract is 22 minutes from Kosciusko, 50 minutes from Canton, and 12 minutes from Highway 55. Call Walker Tranum for your private showing!

Directions from Hwy 51 and Hwy 9 in West, MS: Travel northeast on Hwy 51 for 115 feet. Turn right onto MS-19 South and travel 1.4 miles. Turn left onto MS-440 East and then immediately turn left onto County Road 3102. After 4.4 miles, the property will be on your right. [GOOGLE MAP LINK](#)



**WALKER
TRANUM**
REALTOR®

Office: 662.268.6333

Cell: 662.769.1442

Walker@TomSmithHomes.com



A Real Estate Expert You Can Trust

TomSmithLandandHomes.com



WALKER
TRANUM
REALTOR®

Office: 662.268.6333

Cell: 662.769.1442

Walker@TomSmithHomes.com



A Real Estate Expert You Can Trust

TomSmithLandandHomes.com

Information is believed to be accurate but not guaranteed.





WALKER
TRANUM
REALTOR®

Office: 662.268.6333

Cell: 662.769.1442

Walker@TomSmithHomes.com



A Real Estate Expert You Can Trust

TomSmithLandandHomes.com

Information is believed to be accurate but not guaranteed.





AERIAL MAP

[Click Here for Interactive Map](#)



**WALKER
TRANUM**
REALTOR®

Office: 662.268.6333
Cell: 662.769.1442
Walker@TomSmithHomes.com



A Real Estate Expert You Can Trust

TomSmithLandandHomes.com

Information is believed to be accurate but not guaranteed.





FLOOD MAP



**WALKER
TRANUM**
REALTOR®
Office: 662.268.6333
Cell: 662.769.1442
Walker@TomSmithHomes.com

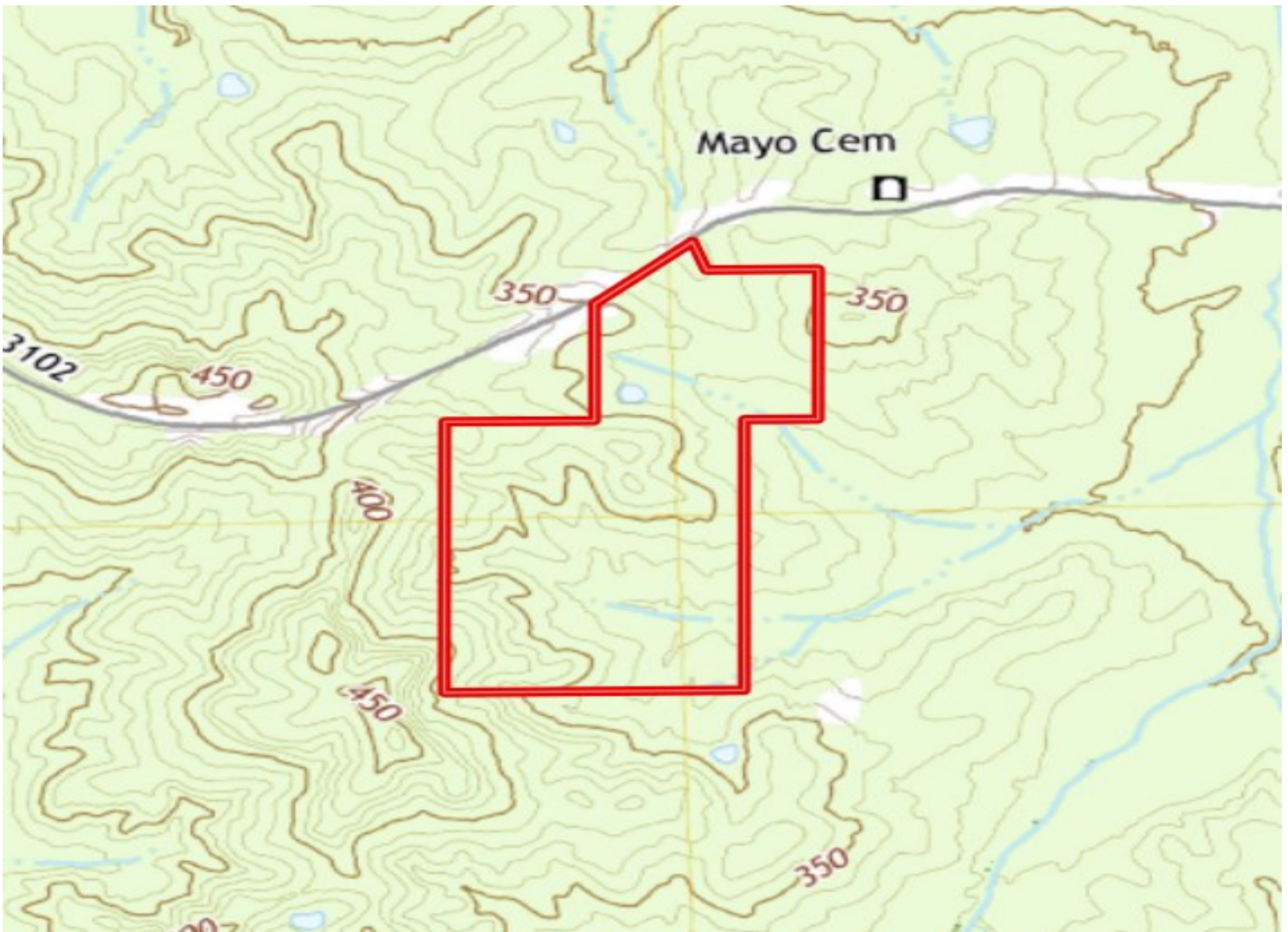


A Real Estate Expert You Can Trust
TomSmithLandandHomes.com





TOPOGRAPHY MAP



**WALKER
TRANUM**
REALTOR®

Office: 662.268.6333
Cell: 662.769.1442
Walker@TomSmithHomes.com



A Real Estate Expert You Can Trust

TomSmithLandandHomes.com

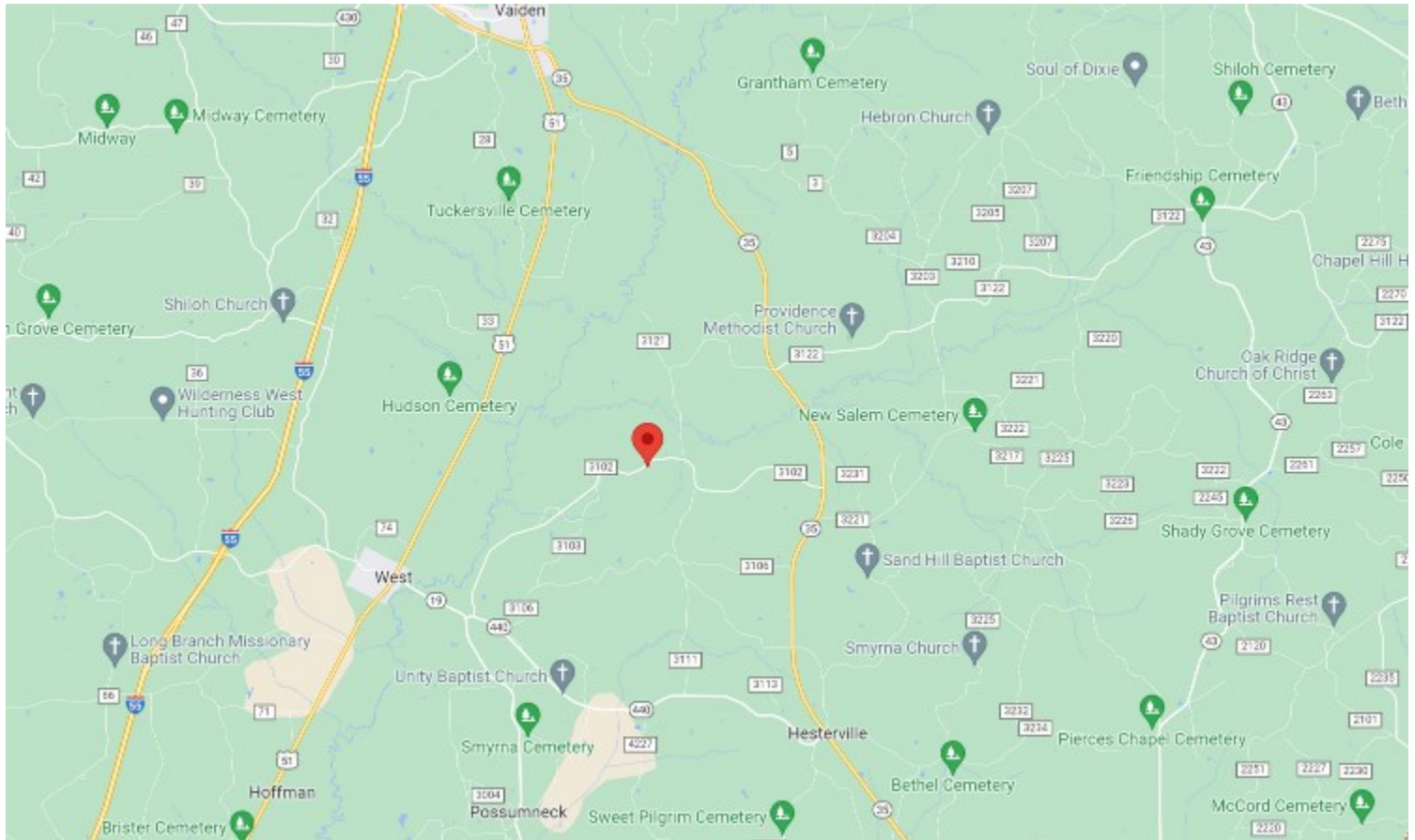
Information is believed to be accurate but not guaranteed.





DIRECTIONAL MAP

Directions from Hwy 51 and Hwy 9 in West, MS: Travel northeast on Hwy 51 for 1.15 miles. Turn right onto MS-19 South and travel 1.4 miles. Turn left onto MS-440 East and then immediately turn left onto County Road 3102. After 4.4 miles, the property will be on your right. [GOOGLE MAP LINK](#)



**WALKER
TRANUM**
REALTOR®

Office: 662.268.6333
Cell: 662.769.1442
Walker@TomSmithHomes.com



A Real Estate Expert You Can Trust

TomSmithLandandHomes.com

Information is believed to be accurate but not guaranteed.

